

Portuguese fiber optic fast connectors are heat resistant

Length:19.3mm
Small-end inner diameter:3.0mm
Large-end inner diameter:3.5mm
Outer diameter:5.5mm





Overview

These interconnects utilize specialized materials, advanced assembly techniques, and temperature-resistant fiber coatings to ensure stable performance in environments reaching up to 150°C and beyond. Optical fiber's ability to withstand extreme heat and cold directly impacts signal integrity, network reliability, and maintenance costs, especially in harsh environments like industrial facilities, outdoor installations, and data centers. In this work, we analyze the thermal effects occurring in optical fibres, such as the coating heating due to high power propagation in bent fibres and the fibre fuse effect. We describe the actual state of the art of these phenomena and our contribution to the subject, which consists on both. FASTConnect® field-installable connectors are factory pre-polished connectors that completely eliminate the need for hand polishing in the field. The melting point of silica is around 1,700 °C, so a bare optical fiber could.



Portuguese fiber optic fast connectors are heat resistant



Fiber Connectors

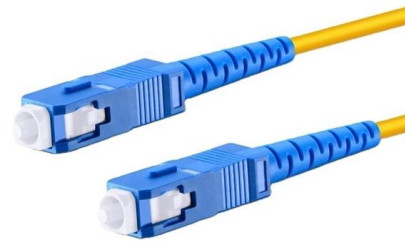
Although fiber connectors give some protection to the inserted fibers, that protection is quite incomplete, e.g. concerning moisture. Therefore, connectors may be put

[Contact Us](#)

PLC FIBER OPTIC SPLITTER MINI MODULE

The fast connectors or field assembly optical connector are pre-polished from factory with V groove mechanical splicing principal to be terminated without epoxy.

[Contact Us](#)



Harsh Environment Fiber Optic Connector Selection

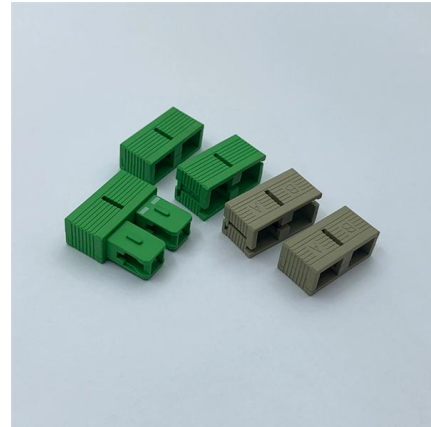
Physical contact and expanded beam are the dominant technologies used in harsh environment fiber optic connectivity. This paper briefly describes each of these two technologies but does not discuss

[Contact Us](#)

FASTConnect® Mechanical Connectors

FASTConnect® field-installable connectors are factory pre-polished connectors that completely eliminate the need for hand polishing in the field.

[Contact Us](#)



How does cold weather affect fiber optic cables and

Optical fiber is everywhere: carrying huge quantities of data at the speed of light. Glass or plastic, fiber is super-fast, flexible and thin, around the

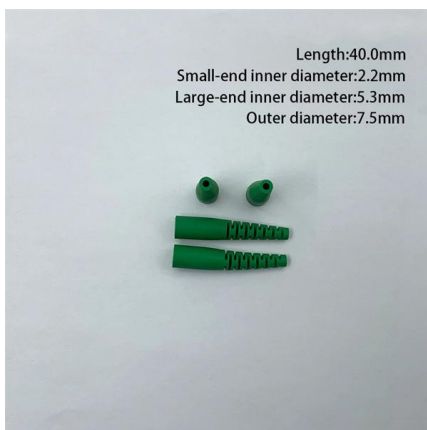
[Contact Us](#)



Fiber Connector Types Guide: Comparison & Selection

Guide comparing fiber connector types, their features, applications and selection tips for reliable, high-performance fiber optic networks.

[Contact Us](#)



Fiber Optic Fast Connector: Mechanical Splicing VS

Both mechanical splicing and fusion splicing fiber optic fast connector offer distinct advantages and disadvantages in fiber optic installations. While mechanical

[Contact Us](#)



China's Top 10 Fiber Optic Fast Connector Suppliers: Your Complete

China dominates global fiber optic manufacturing, producing over 60% of the world's passive optical components. This comprehensive guide examines the country's leading fast

[Contact Us](#)



Fiber Connector Types: A Comprehensive Guide 2025

Discover the common fiber connector types. Learn the differences, uses, and best practices for SC, LC, ST, FC, MPO/MTP connectors.

[Contact Us](#)



High Temperature Fiber Optic Assembly Epoxy Adhesive Technical Product

PRODUCT DESCRIPTION: AA-BOND F123 is a low viscosity, two-component epoxy formulation that signals both proper mixing and curing when bonding fiber optic bundles, potting glass fibers, and/or

[Contact Us](#)



cold weather affect fiber optic cables and connectors

cold weather affect fiber optic cables and connectors cold weather affect fiber optic cables and connectors Optical fiber is everywhere: carrying huge quantities of data at the speed of light. Glass or

[Contact Us](#)





FASTConnect Mechanical Connectors

FASTConnect® field-installable connectors are factory pre-polished connectors that completely eliminate the need for hand polishing in the field. Proven mechanical splice technology ensuring

[Contact Us](#)



Google Tradutor

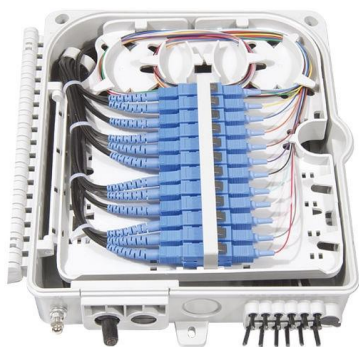
O serviço do Google, oferecido sem custo financeiro, traduz instantaneamente palavras, frases e páginas da Web do português para mais de cem outros idiomas.

[Contact Us](#)

cold weather affect fiber optic cables and connectors

A suitable connector, which is specifically designed for harsh environments, can ensure the fiber conduit is sealed, and the fiber itself is safe from the risk of ice formation.

[Contact Us](#)



Thermal Effects in Optical Fibres

Like a burning fuse, after the optical fibre fuse ignition, the fuse zone propagates towards the light source while a visible white light is emitted. After the fuse zone propagation, the fibre core shows a string of

[Contact Us](#)



Optical fiber assemblies for high temperature environments

Our SEDI-ATI fiber optic assemblies can withstand extreme temperatures of up to +800 °C, and even 1,000 °C thanks to the sapphire fiber. The technological

[Contact Us](#)



Best Cable Fiber Optic Connectors of 2026

What are the best cable fiber optic connectors products in 2026? We analyzed 1,894 cable fiber optic connectors reviews to do the research for you.

[Contact Us](#)

How Much Temperature Can Optical Fiber Withstand? A Complete

Learn the temperature limits of optical fiber (standard, high-temperature, low-temperature), how heat/cold affects performance, and how to choose resilient fibers for your application--Weunion's

[Contact Us](#)



High Temperature Fiber Optic Interconnects , DIAMOND

These interconnects utilize specialized materials, advanced assembly techniques, and temperature-resistant fiber coatings to ensure stable performance in

[Contact Us](#)

These fiber optic connectors offer terminations without any hassles and require no epoxy, no polishing, no splicing, no heating and can achieve similar excellent transmission parameters as standard

[Contact Us](#)



Fiber Optic Fast Connector , Field-installable Connector

LongXing Fast connectors make fiber terminations fast, easy and reliable. These fiber optic connectors offer terminations without any hassles and require no

[Contact Us](#)

Fiber Connector Types: A Complete Guide (2024)

A fiber connector is a precise coupling device to join fiber cables quickly. This guide introduces LC, SC, FC, ST, MPO, CS and many others.

[Contact Us](#)



Heat-resistant connector

Find your heat-resistant connector easily amongst the 17 products from the leading brands (Hirose, LEMO, Fischer,) on DirectIndustry, the industry specialist for

[Contact Us](#)

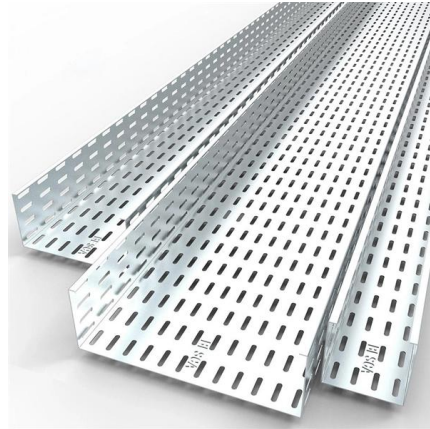




Setting Up Internet in Portugal: A Comprehensive Guide

Internet in Portugal has evolved impressively, with broadband, fiber optics, and mobile internet now widely available. The country's modern digital

[Contact Us](#)



The Ultimate Overview of Fiber Optic Fast Connector

Discover fiber optic fast connector and their key role in modern networks. This guide covers types, installation, and benefits for FTTH, data

[Contact Us](#)



Contact Us

For datasheets, pricing, or custom fiber access solutions, please visit:
<https://frindel.es>