

Polarization-maintaining fiber single-mode





Polarization-maintaining fiber single-mode



A Wide-Bandwidth Single-Mode Low-Loss Hybrid Hollow-Core

A wide-bandwidth single-mode low-loss hybrid hollow-core polarization-maintaining fiber (HC-PMF) with high bend performance and excellent temperature stability

[Contact Us](#)

Single Mode (SM) Fibers , Coherent

Maintain beam quality, and minimize attenuation and dispersion, using single mode fibers available from the visible through the infrared. Coherent manufactures high

[Contact Us](#)



Polarization-Maintaining Fibers Explained

PM fibers address some of the same issues as single-mode communications fibers - minimizing the effect of external stresses and bends on

[Contact Us](#)

Fiber Coupling to Polarization-Maintaining Fibers and Collimation

Polarization-maintaining single-mode fibers (PM fibers) are rotation-ally non-symmetric because of inte-grated stress elements, for example, that break the degeneracy of the two principle states of



(PDF) All-Fiber Linear Polarized LP11 Mode Laser Based on Mode

The polarization-maintaining single-mode fiber is represented by the black line on the left, while the polarization-maintaining few-mode fiber is denoted by the blue line on the right.

[Contact Us](#)

Polarization-maintaining fibers

In polarization-maintaining single-mode fibers (PM fibers), the fiber symmetry is broken by integrating stress elements in the fiber cladding. The light is then

[Contact Us](#)



An Introduction to Polarization-Maintaining (PM) Optical

What are Polarization-Maintaining (PM) Optical Fibers? Polarization-Maintaining (PM) optical fiber is a type of single-mode optical fiber designed to

[Contact Us](#)

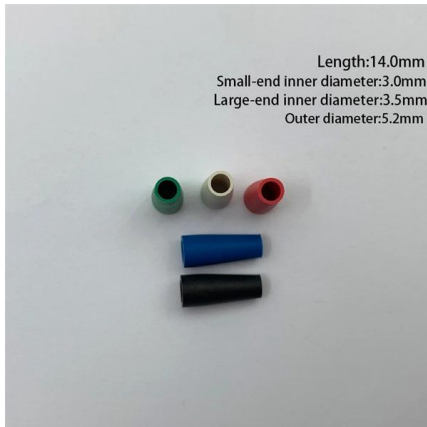




1x16 Single Mode Fiber Optic Splitters

Thorlabs' Single Mode 1x16 Fiber Optic Planar Lightwave Circuit (PLC) Splitters allow a user to split a single input signal evenly into 16 output signals, which is

[Contact Us](#)



Polarization-Maintaining Fiber

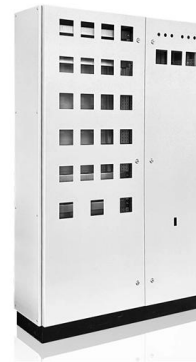
Polarization maintaining fiber is defined as a type of single-mode fiber that preserves the polarization state of light during propagation by introducing anisotropic stress in its core, minimizing cross

[Contact Us](#)

Multi-Axis Single-Mode Fiber Couplers , Fiber Coupling Fixtures

Polarization Maintaining Fiber Coupling The F-916 Polarization Maintaining Fiber Coupler offers coupling into single-mode PM optical fibers in the same way as Model F-915, but adds a rotatable chuck

[Contact Us](#)



Forward Brillouin Scattering in Standard Optical Fibers: Single-Mode

The realization of forward SBS in standard single-mode, polarization-maintaining and multi-core fibers is then discussed in depth. Innovative potential applications in sensors, monitoring of coating layers,

[Contact Us](#)



**780nm DFB Laser, Rb-D2 780.24nm
(QUANTUM OPTICS)**

These DFB lasers operate in both CW and pulsed modes. They are offered in an industry-standard 14-pin butterfly laser package with internal TE cooler, 10K

[Contact Us](#)



Polarization Maintaining Optical Fiber Array

MEISU Polarization maintaining fiber array is a row of PM fiber of any specified orientation (error [Contact Us](#)

1583.3nm DFB Laser with PM Fiber, 20mW Output Power

1590.8nm DFB Laser, 20mW Single-Mode Output, Butterfly Package- Polarization-Maintaining Fiber-Coupled- SC/PC Connector* Excess Inventory Laser * quantity Add to Cart: Buy Now or Get a PDF

[Contact Us](#)



Polarization-Maintaining Fiber Optic Technology

Polarization-Maintaining (PM) fibers are a special class of single-mode optical fibers designed to preserve the polarization state of light as it propagates. In standard

[Contact Us](#)



Qioptiq iFLEX-iRIS Series High-Stability Diode Laser Module

Its output is delivered either as a collimated free-space beam or, more commonly, through a single-mode polarization-maintaining (PM) optical fiber--ensuring mode purity, minimal pointing drift, and

[Contact Us](#)



Erbium-Doped Fiber Amplifiers (EDFA)

For additional flexibility, the EDFAs are available in single mode (SM) and polarization-maintaining (PM) models. The EDFA100S (X) and EDFA300S (X) SM amplifiers are polarization-insensitive, and the

[Contact Us](#)

Spark-X 1280 nm Fiber-Based Femtosecond Laser System

Unlike free-space Ti:sapphire or OPO-based systems, the Spark-X leverages polarization-maintaining single-mode fiber delivery, eliminating alignment drift and enabling stable, turnkey operation in

[Contact Us](#)



E-2000® Connector , High-Performance Fiber Optics

The E-2000® connector by DIAMOND - inventor of this reliable, high-performance fiber optic solution - offers low insertion loss and multiple interface options for

[Contact Us](#)



High-Power Fiber Optic Solution , DIAMOND SA Power

As fiber optic systems push the boundaries of power, the demand for high-power fiber interconnecting technology becomes increasingly compelling. DIAMOND

[Contact Us](#)



Polarization-maintaining Fibers - PM fiber, HIBI fiber,

A polarization-maintaining fiber guides two polarization modes but is designed to prevent coupling between them. In contrast, a single-polarization fiber is designed

[Contact Us](#)

Polarization maintaining single-mode low-loss hollow-core fibres

To deliver on their promises, HCFs must retain their unique properties while achieving the modal and polarization control that are essential for their most compelling applications. Here we

[Contact Us](#)



Innovations Driving Single Mode Polarization Maintaining Fiber Market

Single Mode Polarization Maintaining Fiber market grows at 35.1% CAGR. Analysis of drivers, applications, and key players like Corning. Access 2034 projections.

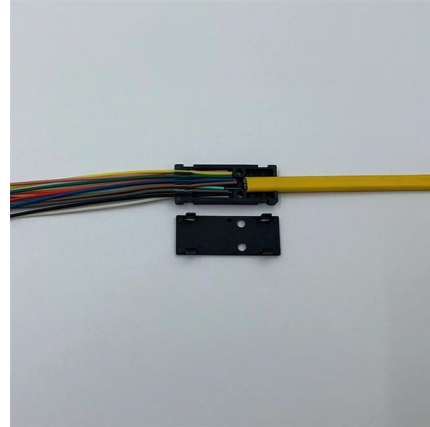
[Contact Us](#)



SC Connector , IEC-Compliant, High-Precision Fiber

Available in simplex configurations for single-mode and multimode cables, SC connectors can be factory-assembled or provided as kits for field installation.

[Contact Us](#)



Qioptiq iFLEX-IRIS Compact Single-Wavelength Fiber-Coupled Laser

KineFLEX® polarization-maintaining (PM) single-mode fiber delivery (e.g., PM980 or PM1550, depending on wavelength variant), with FC/APC or SMA905 termination Dual-output capability:

[Contact Us](#)

Polarization-maintaining Fibers - Buying Guide & Suppliers

Polarization-maintaining (PM) fibers are single-mode optical fibers that possess a high built-in birefringence, distinguishing them from standard single-mode fibers where birefringence is minimized

[Contact Us](#)



Fiber Optic Color Code: The Ultimate TIA-598-C Guide

Master the TIA-598-C fiber optic color code standard. Read our complete guide and use our free interactive calculator to easily identify 1-144 core cables.

[Contact Us](#)

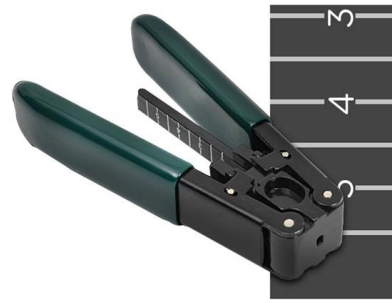




Product Configurator

Product Configurator for all single-mode and polarization-maintaining Fiber Cables. Please use the check boxes and sliders to select certain features and narrow down your search to the specifications

[Contact Us](#)



Polarization-Maintaining Single Mode Optical Fiber

This polarization-maintaining fiber is optimized for fiber optic gyroscope (FOG) applications. It is designed for optimal performance over a wide temperature

[Contact Us](#)

Contact Us

For datasheets, pricing, or custom fiber access solutions, please visit:
<https://frindel.es>