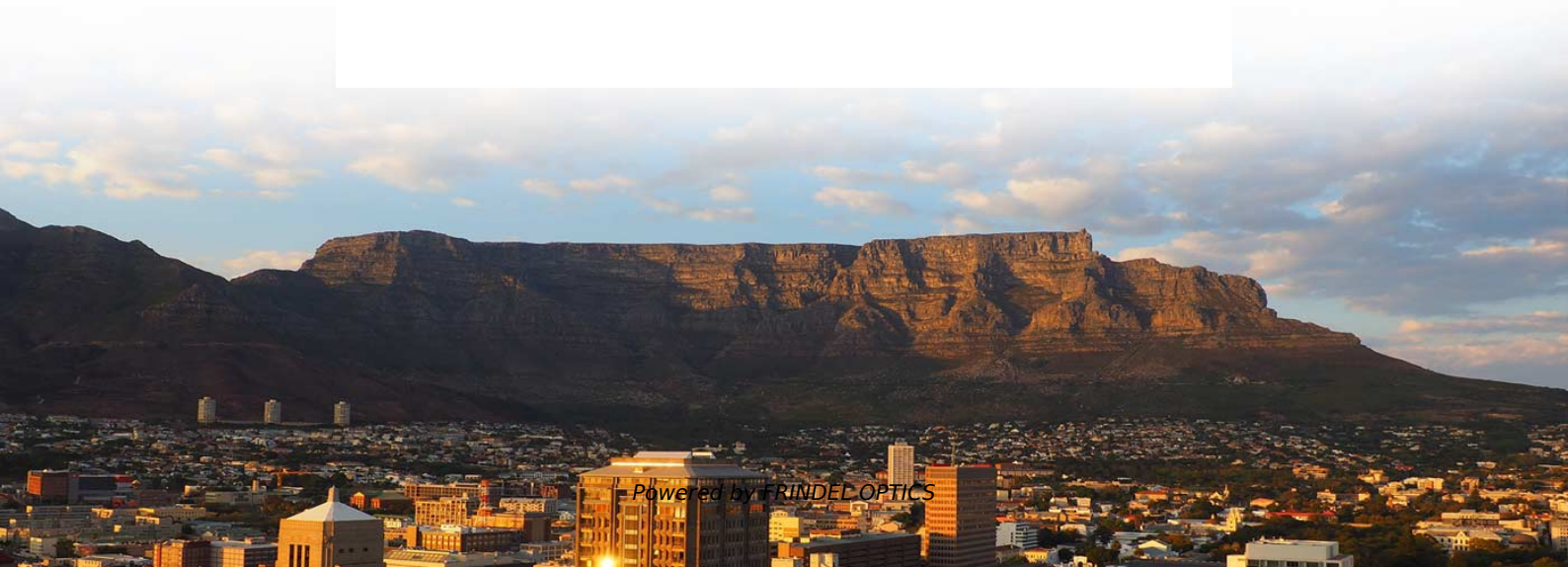


# **Polarization-maintaining fiber optic slow-axis and fast-axis transmission**





## Overview

---

Polarization Maintaining fibers work by inducing a difference in the speed of light in the two perpendicular polarizations passing through the fiber. In polarization-maintaining single-mode fibers (PM fibers), the fiber symmetry is broken by integrating stress elements in the fiber cladding. There are several PM fiber designs - all quite different and each with its own complexities in preform.



## Polarization-maintaining fiber optic slow-axis and fast-axis transmissi

---



### **An article to understand the principle of polarization-maintaining**

Generally speaking, how well the polarization-maintaining fiber maintains the polarization state depends on the incident state of the polarized light, and the polarization state of the polarization-maintaining

[Contact Us](#)

### **A Detailed Analysis of Polarization-Maintaining Fiber**

Its core principle is to utilize highly birefringent structures (such as stress zones or geometric asymmetry) to decompose incident linearly polarized

[Contact Us](#)



### **Polarization-maintaining Fibers - PM fiber, HIBI fiber,**

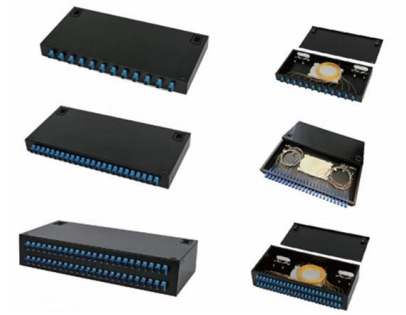
Working with polarization-maintaining fibers requires special attention to the rotational orientation of the fiber. When splicing two PM fibers, their birefringent

[Contact Us](#)

### **What Is Polarization Maintaining Fiber (PM Fiber)?**

Learn how PM fiber works, why PANDA fiber is popular, and where it's used in precision devices like gyroscopes and optical sensors.

[Contact Us](#)



### What's the Fast and Slow Axis?How to Align the PM

Polarization Maintaining fibers work by inducing a difference in the speed of light in the two perpendicular polarizations passing through the fiber. This birefringence

[Contact Us](#)

### How Does Polarization-maintaining Fiber Keep

2. 2. Polarization-maintaining fiber vs. wave plate  
Polarization-maintaining fibers form fast and slow orthogonal axes due to the strong birefringence of the core, and

[Contact Us](#)



### What's the Fast and Slow Axis?How to Align the PM

What's the Fast and Slow Axis? Polarization Maintaining fibers work by inducing a difference in the speed of light in the two perpendicular polarizations passing

[Contact Us](#)





## **POLARIZATION MAINTAINING FIBERS AND THEIR**

Discover the characteristics of polarization maintaining fibers, or PM fibers, and their applications.

[Contact Us](#)



### **Polarization-maintaining fibers**

In polarization-maintaining single-mode fibers (PM fibers), the fiber symmetry is broken by integrating stress elements in the fiber cladding. The light is then

[Contact Us](#)

### **Polarization-maintaining fibers**

Polarization-maintaining single-mode fibers guide coupled radiation in two perpendicular principle states, the fiber polarization axes (also called the slow

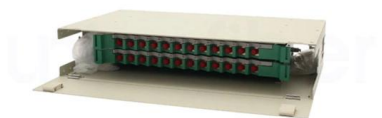
[Contact Us](#)



### **Polarizer**

The transmission axis of the linear polarizer needs to be half way (45°) between the fast and slow axes of the quarter-wave plate. In the arrangement above, the

[Contact Us](#)

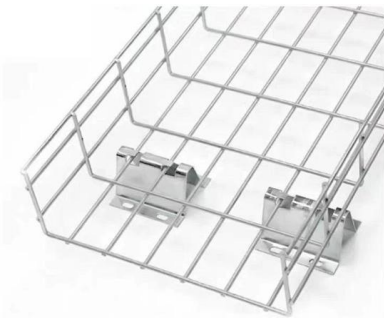




## Polarization-Maintaining Fiber Coupler: Working

Parallel axis coupler: The fast axes (or slow axes) of the two optical fibers are parallel to each other  
Cross axis coupler: The fast axis of one optical fiber is aligned with

[Contact Us](#)



## Polarizing Optical Fiber

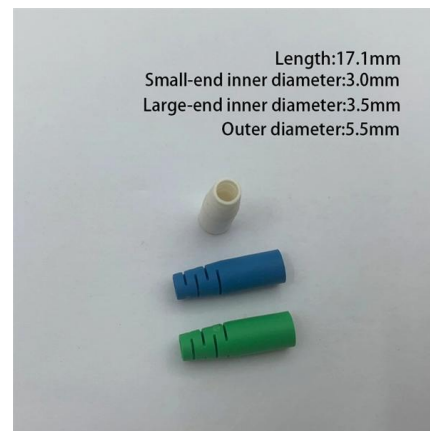
Thorlabs' Polarizing (PZ) fibers, also known as Zing(TM) fibers, are specialty optical fibers in which one and only one polarization state is allowed to propagate. Light

[Contact Us](#)

## Polarization-Maintaining Fiber Tutorial

In the most common optical fiber telecommunications applications, PM fiber is used to guide light in a linearly polarised state from one place to another. To achieve this result, several

[Contact Us](#)



## Polarization Maintaining Optical Circulator (High)

The 3-port polarization maintaining optical circulator (high extinction ratio) can work on both slow-axis and fast-axis linear polarizations, or just transmit one principal

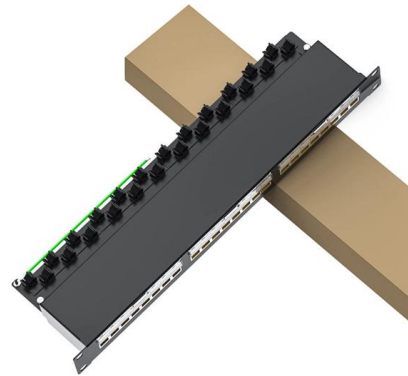
[Contact Us](#)



## Polarization-Maintaining Fiber (PMF)

Maintaining Polarization State by Birefringence  
Theoretically speaking, an optical fiber with a circular core has no birefringence, and the polarization state in such

[Contact Us](#)



## Polarization-Maintaining Fibers Explained

The two axes in a PM fiber are sometimes called the "slow axis" and the "fast axis," because they have different indices of refraction. This means that

[Contact Us](#)

## PM Fiber (Polarization Maintaining Optical Fiber)

Polarization Maintaining Optical Fiber is a specialized type of single-mode fiber designed to preserve the polarization of light during transmission. Unlike standard single-mode fibers, which

[Contact Us](#)



## What is PM Fiber? Polarization Maintaining Fiber Explained

Learn what Polarization Maintaining Fiber (PMF) is, how it works, and its applications. Explore fast/slow axis, beat length, extinction ratio, and types of

[Contact Us](#)

## Principle of polarization-maintaining optical



Polarization-maintaining fiber works by causing a difference in the speed of light in two perpendicular polarizations passing through the fiber. This

[Contact Us](#)



### POLARIZATION MAINTAINING FIBERS AND THEIR

Slow and Fast Axes: The PANDA design of PM fibers incorporates Stress-Applied Parts (SAP) to induce birefringence. These create two orthogonal axes of

[Contact Us](#)



### Assembly and measuring technology for fibre optic polarization

2 Physics of polarization maintaining fibre The birefringence characteristics of PM fibres are given by stress-inducing elements or by an asymmetric design in the PM fibre. The birefringence defines the

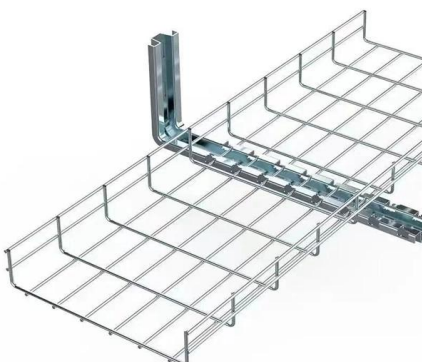
[Contact Us](#)



### An Introduction to Polarization-Maintaining (PM) Optical

Learn about Polarization-Maintaining (PM) Optical Fibers, their unique properties, advantages, and significance in communications networks.

[Contact Us](#)

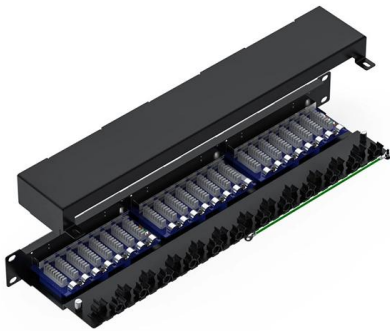




## Waveplate

In the plate, the parallel wave propagates slightly slower than the perpendicular one. At the far side of the plate, the parallel wave is exactly half of a wavelength delayed relative to the perpendicular wave,

[Contact Us](#)



## Polarization-maintaining fibers - key technology of the

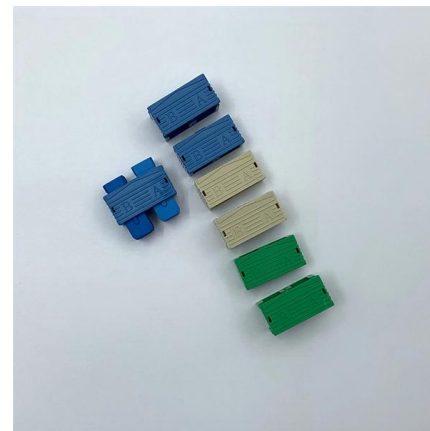
The resulting birefringence causes the formation of two main axes, the "fast axis" and the "slow axis," along which linearly polarized light can be transmitted while

[Contact Us](#)

## What Is Polarization Maintaining (PM) fiber patch cables?

Perhaps the most important factor is the alignment between the polarization axis of the light with the slow axis of the fiber. Connectors of PM Patch Cables Given the importance of the

[Contact Us](#)



## Polarization-Maintaining Fiber

The use of polarization-maintaining fibers requires identification of the slow and fast axes before an optical signal can be launched into the fiber. Structural changes are often made to the fiber for this

[Contact Us](#)



## Accurate alignment preserves polarization , Lightwave

Polarization-maintaining fiber-optic systems require specialized fiber and connectors and careful assembly and alignment to achieve optimal performance.

[Contact Us](#)



## Contact Us

---

For datasheets, pricing, or custom fiber access solutions, please visit:  
<https://frindel.es>