

Performance Comparison of CS Connector Upgraded Version and Imported Brands





Performance Comparison of CS Connector Upgraded Version and Im



Understanding CS Connector for Fiber Patch Cable: A

CS connectors provide significant space savings of ~40% over LC and other optical connectors. Compared to an LC duplex connector, the CS connector

[Contact Us](#)

Understanding the CS Connector: A Comprehensive Guide

The CS Connector is crucial for ensuring smooth communication and data exchange between various systems in today's interconnected world of

[Contact Us](#)



Decoding the CS Connector: A Beginner's Guide to

Fiber patch cables play a crucial role in establishing these connections, and among the various connectors available, the CS connector stands out. In this

[Contact Us](#)



Senko CS Connector Wins 2018 Lightwave Innovation

Senko announced today that the CS Connector was recognized as a winner in the 2018 Lightwave Innovation Reviews program. It was awarded



MDC vs SN vs CS Connector - DXConnectivity for

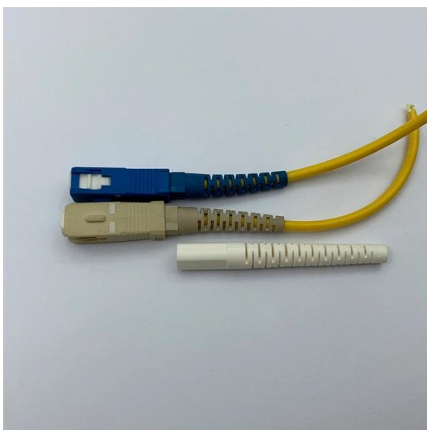
Compare MDC, SN, and CS VSFF connectors for 800G networks -- discover which delivers the best density, reliability, and ROI for AI and cloud data

[Contact Us](#)

CS Connector

Senko's new CS connector is specifically designed for Data Centre 400G optimization. Intended to complement the form factor of the next generation of (OSFP/ QSFP-DD) transceiver

[Contact Us](#)



CS® connectors by Senko in FCA's product portfolio.

CS® connectors in data centers are highly valued for their performance, ease of installation, and space-saving benefits. They enable efficient management and expansion of network infrastructure in high

[Contact Us](#)



CCS1 v/s CCS2: Difference Between the CCS Ports

In comparison, the CHAdeMO connector has a potential power delivery of up to 200 kW, but it's gradually being phased out in Europe. China is

[Contact Us](#)



CS Connectors vs. MPO/MTP: Why the Next Wave of Data Center

As AI clusters scale to 800G and 1.6T, the industry is quietly shifting from MPO/MTP multi-fiber connectors to smaller-form-factor options -- particularly CS (Cloud-Scale) and LC duplex

[Contact Us](#)

NACS vs CCS Connector Explained (2025 Guide)

NACS vs CCS: key technical differences NACS vs CCS1 connector comparison How NACS and CCS1 compare on design, performance, and everyday usability.

[Contact Us](#)



The Cutting-Edge CS® Connector: Revolutionizing High

Discover how the cutting-edge CS® Connector is revolutionizing high-density fiber optic solutions with exceptional performance for data centers and

[Contact Us](#)



CS Fiber Connectors_Next Generation High Density Connectors

In summary, CS connectors are next-generation high-density connectors supporting data rates up to 400Gb/s and 800Gb/s, offering significant space savings and improved performance compared to

[Contact Us](#)



Specification for CS® Connector

Specification for CS® Connector Rev 1.2 May 21st, 2020 Abstract: This specification defines the fiber optic connector interface, a single position plug connector set of plug/adaptor configuration that is

[Contact Us](#)

Advantages of CS Connector over LC Duplex Connector

The CS connector offers numerous advantages over the LC duplex connector when used with QSFP-DD and OSFP optical transceivers. Its compact size, superior



[Contact Us](#)



CS Application Guide

CS Application Guide As network bandwidth doubles every 18 months (Edholdm's law), provisions have to be made to distribute this additional workload. Whereas years ago, 10Gb or 40Gb backbones

[Contact Us](#)

CS Connector



Panduit has launched the CS® Connector, a high-density fiber connector solution that optimizes the data center for next generation applications. Its compact size

[Contact Us](#)



CS Standard Connector

The Original CS® Standard connector design offers exceptional performance at an economical price. The CS is a Very Small Form Factor (VSFF) connector and is

[Contact Us](#)



What is a CS optical Connector Fiber Optic Cable?

Explore the benefits of CS optical connector fiber optic cables for 200G, 400G, and 800G networks. Compare CS connectors with LC connectors

[Contact Us](#)



Micro CS CONNECTOR

The Micro CS® connector follows a duplex design that combines two spring-loaded 1.25 mm ceramic ferrules within a single miniature structure. The upper face of the connector features a latch-locking

[Contact Us](#)





CS Connector & Cable Assemblies.pub

The CS connector meets the requirement for 2x100G/200G CWDM4 transceivers requiring two pairs of TX/RX. Our CS Cable Assembly support next-generation 200/400 Gbps QSFP-DD and OSFP

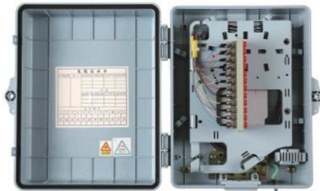
[Contact Us](#)



High-density connectivity packs fiber into data centers

These transceivers require equally dense fiber connectivity. Recent technology developments have shrunk the amount of real estate occupied by dual-fiber

[Contact Us](#)



NACS vs. CCS: What EV Shoppers Need to Know in

Confused by NACS vs. CCS charging ports? Our guide explains the industry's switch to Tesla's plug and what it means for your EV purchase and

[Contact Us](#)



CS Fiber Connectors_Next Generation High Density Connectors

1. CS connectors are a new generation of high-density, very small outline (VSFF) connectors that save about 40% space compared to LC and other optical connectors. They allow twice the density of

[Contact Us](#)

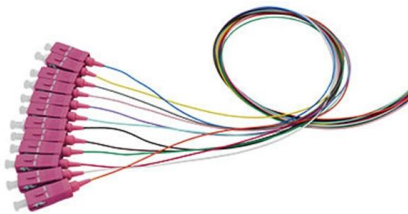




Smaller, Lighter, Faster: The Advanced Engineering of

The CS Connector represents the next step in the evolution of fiber optic connectivity. By embodying the principles of being smaller, lighter, and

[Contact Us](#)



CS Series » SENKO Advanced Components, Inc.

More than double the density With its compact design and innovative engineering, the CS connector is rapidly becoming the go-to solution for high-density patch

[Contact Us](#)

Contact Us

For datasheets, pricing, or custom fiber access solutions, please visit:
<https://frindel.es>