

Parameters of Huawei Core Switch





Overview

CloudEngine S16700 series switches are flagship core switches with record-high performance designed for high-quality 10 Gbps campus networks. 4 Tbit/s per slot, unmatched data switching, and massive terminal access. They provide ultra-high-density 10GE/40GE/100GE/200GE/400GE full-rate access ports, meeting customers' requirements for quickly building campus networks with a simplified. Requirement 2: One guest Wi-Fi network needs to be enabled, on which rate limiting is configured to prevent office traffic from being affected. These purpose-built switches help create a campus network that improves user experiences, reduces operating costs, and delivers unmatched security and trustworthiness for a. It happens primarily through the command-line interface (CLI), guided by the Huawei switch command guide.



Parameters of Huawei Core Switch



CloudEngine S12700E Series Switches Datasheet

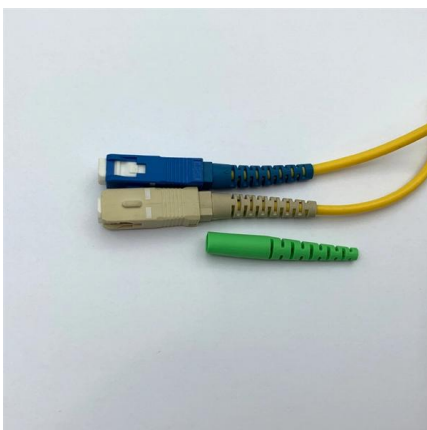
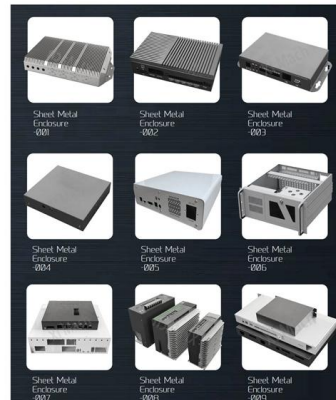
By using a next-generation cell switching architecture, CloudEngine S12700E ensures non-blocking service data forwarding on core nodes and guarantees service quality in high-concurrency, large

[Contact Us](#)

Native AC Solution: Core Switches Function as the Gateway for Wired

In addition, core switches are configured with the native AC function to manage APs and transmit wireless service traffic on the entire network, implementing wired and wireless convergence. Access

[Contact Us](#)



Basic Configuration for Interfaces

Documentation Switches Campus Switch S1700& S2700 Configuration & Commissioning Configuration Guide About This Document Interface Management Features Supported in This Version Basic

[Contact Us](#)

CPU and CPU Usage Working Mechanism

CPU and CPU Usage Overview CPU - The Core of a Switch A switch uses the distributed architecture, including forwarding and control planes. The forwarding plane implements Layer 2 and Layer 3



Why Does Your Network Need A Huawei Core Switch? Is Outdated

Every modern enterprise faces a silent crisis: sluggish networks that throttle productivity, frustrate users, and leave IT teams scrambling. At the heart of this challenge lies the core switch--a device that

[Contact Us](#)



Huawei Switch Configuration Guide , PDF , Network

The document provides detailed steps and examples for completing common switch configuration tasks.

[Contact Us](#)



Huawei Core Switch: Network's Beating Heart? Can Centralized

Traditional core switches fail catastrophically--one power supply dies, and the whole network flatlines. The Huawei core switch employs N+1 power redundancy and hot-swappable

[Contact Us](#)





Master Huawei Switch Commands? Can Your CLI Skills Define

It's the difference between just having switches and truly orchestrating your network's destiny. Now, back to the core question from our title: Can Your CLI Skills Define Network Success?

[Contact Us](#)



Basic Interface Configuration Commands

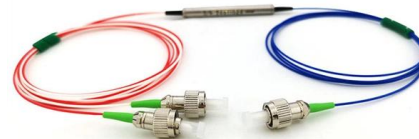
This document describes all the configuration commands of the device, including the command function, syntax, parameters, views, default level, usage guidelines, examples, and related commands.

[Contact Us](#)

Core Switch vs. Distribution Switch vs. Access Switch

Comprehensive guide to Core, Distribution, and Access Switches. Roles in the network and important parameters explained.

[Contact Us](#)



Link Aggregation Configuration

This document provides campus networks typical configuration examples and feature typical configuration examples. "Campus Networks Typical Configuration Examples" provides typical

[Contact Us](#)

Huawei CloudEngine S16700 Series



Flagship Core Switches Datasheet

? The switch provides high scalability and supports smooth bandwidth expansion, smooth port rate upgrade, and compatibility with cards on the live network to protect investments.

[Contact Us](#)



Configuring Devices to Be Managed by the Controller (in the Hybrid)

Choose Switch > Interface from the navigation pane on the left, select the Eth-Trunk interfaces connecting the core switches to downstream devices, and set the following parameters in

[Contact Us](#)

CloudEngine S16700 Series Switches

CloudEngine S16700 series switches are flagship core switches with record-high performance designed for high-quality 10 Gbps campus networks. This series

[Contact Us](#)



Standalone AC Solution: Core Switches and ACs Function as the

Aggregation switches set up stacks to implement device-level backup and increase the interface density and forwarding bandwidth. In this example, core switches and standalone ACs function as the

[Contact Us](#)



HUAWEI QUIDWAY S5600 SERIES OPERATION MANUAL Pdf

View and Download Huawei Quidway S5600 Series operation manual online. Quidway S5600 Series switch pdf manual download.

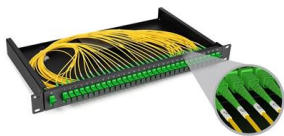
[Contact Us](#)



SME Network Solution Typical Configuration Examples

"Gateway (AR720) + Core Switch + Access Switch + AP + AR180" Networking: Huawei eKit Cloud Management "Gateway + Core Switch + Access Switch + WAC + AP" Networking: Local Entire

[Contact Us](#)



Web-based Deployment Cases

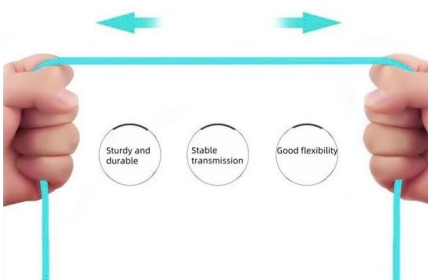
Add interfaces for connecting the core switch and access switches to VLANs. # Configure the interfaces for interconnection between the core switch and access switches as planned.

[Contact Us](#)



More durable and robust

The outer layer is made of environmentally friendly PVC, which is soft and elastic. It can be stretched without damage, so you can use it with confidence.



Master Huawei Switch Commands? Can Your CLI Skills Define

The real question for anyone serious about their network's performance, reliability, and security isn't if they need these commands, but how deeply they understand and utilize the nuances

[Contact Us](#)



Basic CLI Commands on Huawei Switch

This text is a guide detailing Basic Command Line Interface (CLI) Commands on Huawei brand switches. It provides step-by-step instructions for users to perform

[Contact Us](#)



Configuring the Core Switch

Configuring the Core Switch Context In this scenario, IP addresses of the interfaces connecting the core switch to the BRASs and firewalls and OSPF need to be configured on the core

[Contact Us](#)

Wi-Fi-based Deployment Cases -Gateway + Core Switch + Access

In addition, the core switch functions as the user gateway. With the wizard-based network configuration function, the interconnection subnet, interconnection VLAN, and route between the core switch and



[Contact Us](#)



S Series Campus Switches Quick Configuration.pdf

This document describes how to log in Huawei S series switches for the first time and fast configure the switches, and describes the procedures of configuring unconfigured switches in three

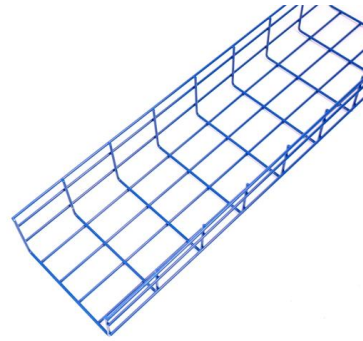
[Contact Us](#)



Native AC Solution: Core Switches Function as the Gateway for Wired

Configure CSS on core switches and stacking on aggregation switches, and configure MAD and uplink and downlink Eth-Trunk interfaces on the switches. For details, see Typical CSS and Stack

[Contact Us](#)



Huawei S Series Quick Configuration

View and Download Huawei S Series quick configuration online. Campus Switches. S Series switch pdf manual download. Also for: S2750, S5700.

[Contact Us](#)

Contact Us

For datasheets, pricing, or custom fiber access solutions, please visit:
<https://frindel.es>