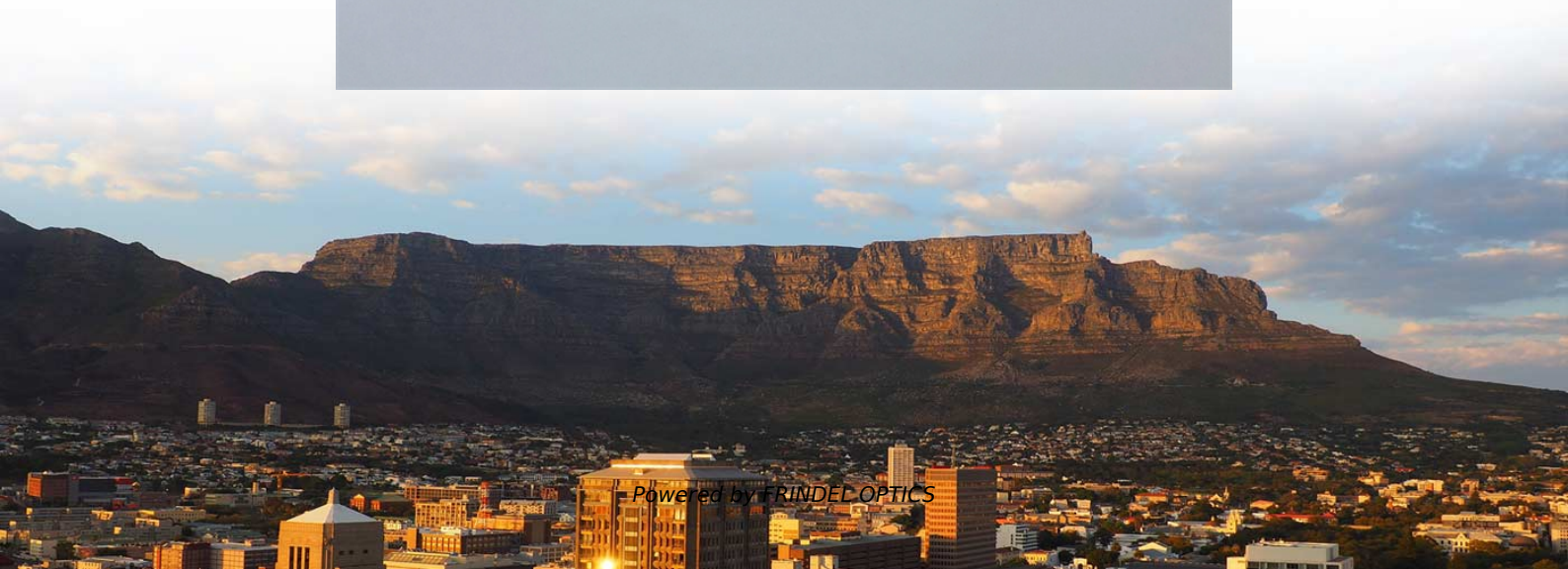


Parameters of Ecuadorian Standard Lighting Distribution Box





Parameters of Ecuadorian Standard Lighting Distribution Box



The Complete Guide to Distribution Box: Installation, Types & More

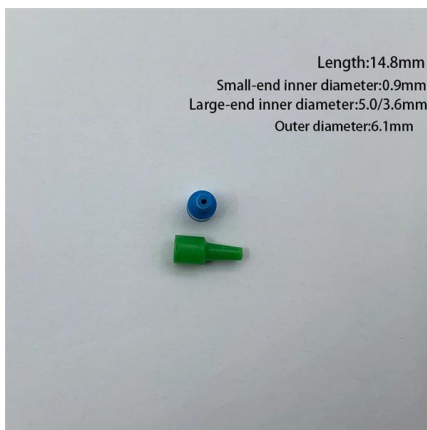
Consult with qualified electrical professionals to ensure your distribution boxes meet current standards and can accommodate future needs. Your proactive approach to electrical

[Contact Us](#)

The purpose, working principle, and usage instructions

By using measuring instruments, various parameters during operation can be displayed, and certain electrical parameters can be adjusted to prompt or

[Contact Us](#)



Requirements And Specifications For Installation Of

The installation requirements and specifications of Distribution box involve many aspects, including site selection, fixing method, wiring specifications

[Contact Us](#)

Understanding XM Low Voltage Lighting Distribution Box: Your

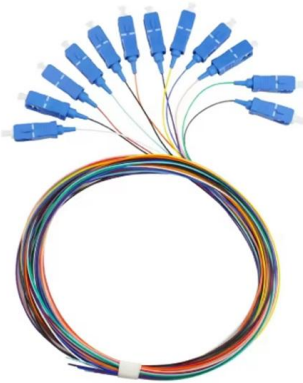
Discover the essential guide to XM Low Voltage Lighting Distribution Boxes, designed for homeowners and electricians seeking optimal lighting solutions. This comprehensive article delves



Ecuadorian Energy Efficiency Standards , PDF , Heat Transfer , Lighting

ECUADORIAN INSTITUTE OF NORMALIZATION
Quito - Ecuador ECUADORIAN TECHNICAL
STANDARD NTE INEN 2 506:2009 ENERGY
EFFICIENCY IN BUILDINGS. REQUIREMENTS. First

[Contact Us](#)



The Lighting Handbook

The definition of individual visual tasks for the purpose of lighting design in a room, as provided for in the EN 12464 standard, opens up new perspectives for lighting design.

[Contact Us](#)



DISTRIBUTION BOARDS CATALOG

Efficient Power Distribution: Optimized for minimal power loss, ensuring effective energy management and distribution. Easy Installation and Maintenance User-Friendly Design: Simplified installation

[Contact Us](#)

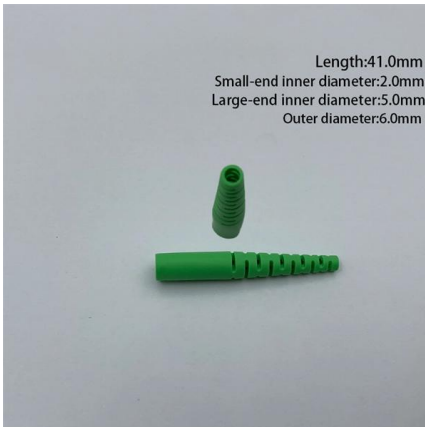




Redesign of the electrical power and lighting network at ice cream

This article proposes the redesign of the electrical power and lighting network in an Ice Cream Parlor located in the city of Quito to ensure continuity in the electrical service and a luminous level

[Contact Us](#)



Distribution Box Specifications And Models

The above are only some common distribution box specifications and features. When making actual selections, it is necessary to comprehensively

[Contact Us](#)

Overview of basic knowledge of distribution box and

The distribution box is divided into power distribution box and lighting distribution box, which is the last level equipment of the distribution system. The distribution

[Contact Us](#)



Technical Specifications for Outdoor LT Distribution boxes with

Scope: The scope of this specification covers Weather / Vermin proof LT distribution boxes (LTD) with controllers, MCCB, MCB, Bus bars, Contactors, CT's, Energy Meter, LT gas filled fixed capacitor, DC

[Contact Us](#)

ISO



In close collaboration with governmental entities, industry, consumers and academia, INEN is responsible for the development, publication and promotion of

[Contact Us](#)



Main Lighting Distribution Board (LDB)

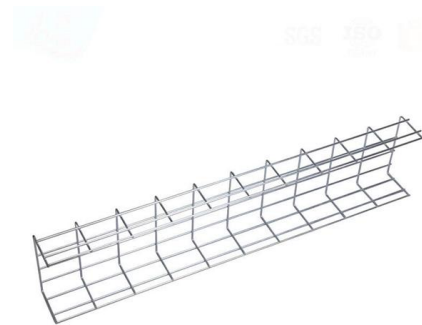
DOHO is a leading lighting distribution board and other safety equipment for industrial, commercial, and residential applications. We are an experienced

[Contact Us](#)

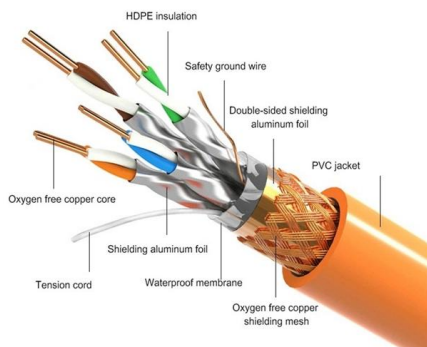
Ecuadorian Electrical Installation Standards

This document presents the Ecuadorian Construction Standard (NEC) developed by the Ministry of Urban Development and Housing of Ecuador. The NEC updates

[Contact Us](#)



PRODUCT DETAILS



Distribution-box - SANS10400-Building Regulations

Stormwater disposal (1) National Building Regulations (SA) (86) Facilities for disabled persons (2) International Building Regulations (1) Lighting

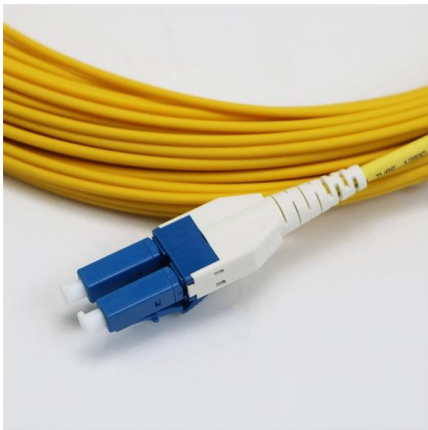
[Contact Us](#)



Distribution Boxes: Types and Functions

Learn what an electrical distribution box (DB/distribution board) is, its main components (MCB/RCCB/RCBO, SPD, busbar) and common types.

[Contact Us](#)



Distribution Box Specifications And Models

There are many specifications and models of Distribution box. The following are some common specifications and models of distribution boxes and

[Contact Us](#)

Explosion proof distribution box standards and installation issues

I. Explosion-proof distribution box general standards Distribution box production technology indicators to meet the specifications and design requirements, and in accordance with the provisions of the

[Contact Us](#)



What is Lambertian Distribution? , Lumato

The Lambertian distribution principle is a key concept in lighting design. Explore the history, science and application of this lighting industry staple.

[Contact Us](#)



Light distribution curves, illumination diagrams and isolux diagrams

Lighting theory Light distribution curves, illumination diagrams and isolux diagrams Careful planning work is required to solve lighting tasks. The necessary information about the properties of luminaires

[Contact Us](#)



AC POWER DISTRIBUTION SWITCH BOARD

This also includes design, supply, laying and termination of PVC insulated armoured power and control cables required for distribution of AC auxiliary power at different points of switchyard, control room

[Contact Us](#)



Energy sector in Ecuador for public lighting: Current status

The general public lighting service coverage must be measured in terms of the kilometers of roads needed to be lit in the country and whose lighting system must observe technical

[Contact Us](#)



The installation requirements for the distribution box

Learn how to install a distribution box safely and correctly. Covers wiring, placement, standards, and expert tips for a compliant setup.

[Contact Us](#)





Power distribution box installation standard , Anssin

The power distribution box has also become a power distribution unit, which can safely distribute power to other devices in the circuit.

[Contact Us](#)



Ecuadorian Energy Efficiency Standards , PDF , Heat Transfer , Lighting

This document establishes the requirements to improve energy efficiency in buildings in Ecuador. It details the requirements for thermal insulation in the building envelope, the shape and orientation of

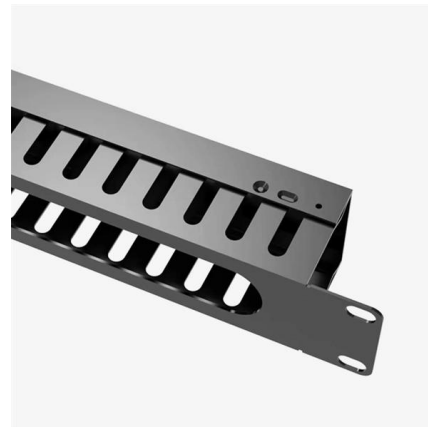
[Contact Us](#)



Working principle of lighting distribution box

Residential lighting distribution box Lighting distribution box is a low-voltage lighting distribution box composed of switchgear, measuring instruments, protection

[Contact Us](#)



LIGHTING DISTRIBUTION BOARD

LIGHTING DISTRIBUTION BOARD Why need a Accu-Panel Lighting Distribution Panel is built like a showpiece, from its stainless steel or MS CRCA enclosure to

[Contact Us](#)



TECHNICAL SPECIFICATION FOR OUTDOOR TYPE DISTRIBUTION FEEDER PILLAR BOX

1. Scope: This specification covers technical requirements of design, manufacture, testing at manufacturer's works, packing, forwarding, supply and unloading at store/site and performance of

[Contact Us](#)



Contact Us

For datasheets, pricing, or custom fiber access solutions, please visit:
<https://frindel.es>