

Panama Bridge Crane Rods





Overview

The Bridge of the Americas (Spanish: Puente de las Américas; originally known as the Thatcher Ferry Bridge) is a road bridge in Panama which spans the Pacific entrance to the Panama Canal. Designed by American civil engineering company Sverdrup & Parcel, it was completed in 1962 at a cost of US\$20 million. Two other bridges cross the canal: the Atlantic Bridge at the Gatun locks and the C.



Panama Bridge Crane Rods



Crane Manufacturers In Panama, Electric Hoist, Overhead Cranes

Our Electric Wire Rope Hoist In Panama is designed with utmost precision so that you get high performance. Our product range is filled with; Double Girder Crane, Twin Girder Crane, Double

[Contact Us](#)

Second Bridge over the Panama Canal Project

A floating crane, called Titan, is permanently stationed in the canal to be used for rescue services, repairing lock gates, etc. Since this machine needed

[Contact Us](#)



Ship Repair , Panama & Colombia ,PANMAX MARINE

PANMAX MARINE SERVICES, since 2006 ship owners reliable partner for mechanical (Cranes, Engines etc.), welding and electric (Motors, Alternators)

[Contact Us](#)

ARGONAUTICS

Argonautics Marine Engineering, Inc. provided detailed procedures for re-assembly of the Titan crane in Panama.

[Contact Us](#)



HD 5 Ton Bridge Crane for Panama Manufacturing Facility

Discover the HD 5 Ton Bridge Crane designed for Panama's manufacturing needs. Boost efficiency and safety in your facility with this reliable lifting solution!

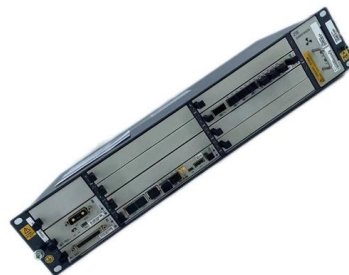
[Contact Us](#)



Panama Canal locks

The Panama Canal locks (Spanish: Esclusas del Canal de Panamá) are a lock system that lifts ships up 85 feet (26 metres) to the main elevation of the Panama

[Contact Us](#)



Bridges Over the Panama Canal , PDF , Deep

Panama Csb - Free download as PDF File (.pdf), Text File (.txt) or read online for free. This document discusses two major cable-stayed bridges built in South

[Contact Us](#)



Panamanian Bridge Manufacturers , Suppliers of Panamanian Bridge

Panamanian manufacturers and suppliers of bridge from around the world. Panjiva uses over 30 international data sources to help you find qualified vendors of Panamanian bridge.

[Contact Us](#)



epiac1216.wordpress

Hier sollte eine Beschreibung angezeigt werden, diese Seite lässt dies jedoch nicht zu.

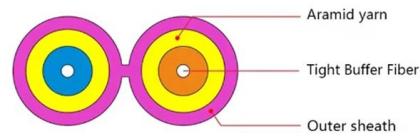
[Contact Us](#)



How Massive Container Ships Cross the Panama Canal

In this episode on Tekniq, we witness an extraordinary feat of engineering from the locks of the Panama Canal to the multi-level elevation of ships with the help of the Falkirk Wheel and a

[Contact Us](#)



Working on the Panama Canal

New tie up station construction is ongoing. Located on the east bank just north of the 2nd bridge, work on the 2nd tie up station progresses. Panama Railroad

[Contact Us](#)





CANAL BARGES & CRANES: PROUD PARTNERS IN

We take immense pride in contributing to projects that not only strengthen Panama's infrastructure but also create lasting value for the port, the cruise industry, the

[Contact Us](#)



M & C Panamá , mcsapanama

Today, we are one of the most important, and well recognized companies in Panama and the region, in the crane market, offering services of installation, repairs,

[Contact Us](#)

Crane Manufacturers In Panama, Electric Hoist, Overhead Cranes

MG CRANES is one of the prominent Crane Manufacturers In Panama and is known for designing overhead traveling Cranes. We are the one who is committed to manufacturing the best quality

[Contact Us](#)



Panama International Terminal

PSA Panama International Terminal Overview
General Description Statistics Overview Overview
PSA Panama International Terminal is a port terminal built at

[Contact Us](#)



Antique Machinery and History , Panama Canal crane questions

Clickable thumbnail:- c.1916 Panama Steam Crane, 55-56 tons capacity at 65 feet radius. I've been asked by a friend in Oz to pose these questions:- 1. Who made it ? 2. Are there any photos

[Contact Us](#)



Technical Description Ship to Shore Gantry Cranes

Used on all Liebherr high performance container cranes for over forty years. Welded down solid member trolley rails. Members of the boom & beam are made from high tensile steel - S355J2+N to DIN 17.

[Contact Us](#)



Panama City, Panama roads (port visit, long)

Crossing the canal between Balboa and Panama City is the "Bridge of the Americas", a 4-lane undivided, steel truss overhead bridge with a 65 kph (about 40 MPH) speed limit. A rough

[Contact Us](#)



From standard 1U to 8U sizes to fully customized Non-standard enclosures.

Panamerican Highway: Bridge of the Americas - Arraiján

GENERAL INFORMATION Location: Puente de las Américas - Arraiján, Province of Panama Oeste, Panama. Contract type: Design, construction and 3 years maintenance Infrastructure: 8 km

[Contact Us](#)





Atlantic Bridge (Panama)

Atlantic Bridge (Panama) Project description The world's busiest waterway - the Panama Canal - has been widened and deep-ened to allow for a second lane of traffic for larger containerships, the new

[Contact Us](#)



Ship Crane Hydraulic Repair: Minimizing Downtime at the Panama

Our facility in Panama utilizes precision machining to resurface damaged cylinder rods to a mirror finish, often saving 60% of the cost of a full replacement. We don't guess if a pump is fixed;

[Contact Us](#)



Super Crane Sails Through Panama Canal , Crane Equipment Guide

Each year, approximately 14,000 cargo and cruise ships pass through the Panama Canal, but recently, one unusual shipment passed through the historic locks.

[Contact Us](#)



Carefully Choreographed Maintenance, 100 Years in the

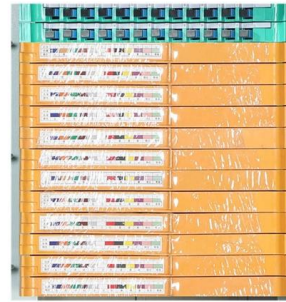
Carefully Choreographed Maintenance, 100 Years in the Making, Completed on the Panama Canal Locks To minimize the impact on transits,

[Contact Us](#)



As part of the Talleres Industriales group of companies, we offer customized structural reinforcements tailored to the specific requirements of cargo or

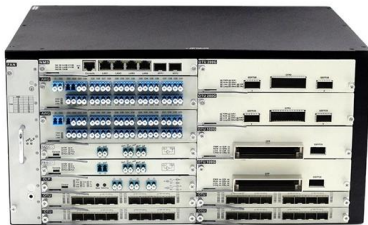
[Contact Us](#)



Panarod , Panarod

Suministramos rodamientos a la industria y el comercio, a través de un amplio stock de mercancía, un servicio oportuno y eficiente, satisfaciendo las expectativas de

[Contact Us](#)



4th Road Bridge over the Panama Canal

Project Description CCC and CHEC were awarded by the Ministry of Public Works of Panama (MOP) the design-build contract of the 4th

[Contact Us](#)



STAINLESS STEEL WIRE MESH

- Long-lasting and durable
- Comprehensive specifications
- Customized non-standard products



Panama's Crane Tow Trucks: Heavy Lifting in Towing

In the bustling streets of Panama City, a remarkable fleet of crane tow trucks has taken the towing industry to new heights.

[Contact Us](#)



Trestle for the 4th Bridge over the Panama Canal

Project Description Construction of the Fourth Bridge over the Panama Canal has started. Among other works, Consorcio Panamá Cuarto Puente (CPCP) retained

[Contact Us](#)



List of bridges in Panama

List of bridges in Panama Historical bridges Major bridges References Nicolas Janberg. "International Database for Civil and Structural Engineering".

[Contact Us](#)

Contact Us

For datasheets, pricing, or custom fiber access solutions, please visit:
<https://frindel.es>