

PE grounding for floor distribution boxes





PE grounding for floor distribution boxes



Grounding Practices in Power Distribution Systems

The installation of grounding methods for transmission lines is absolutely necessary in order to guarantee the safety, dependability, and effectiveness of power

[Contact Us](#)

Guide to earthing structured cabling systems and related hardware

International and local procedures and safety standards for earthing and grounding must be observed and followed at all times. Aginode will not be held liable for any damage or injury to personnel,

[Contact Us](#)



EN / Grounding and cabling of drive systems reference manual

The purpose of this manual is tell you the grounding and cabling principles of variable speed drive systems. The guidelines help you to fulfill the personnel safety, electromagnetic

[Contact Us](#)



Instrumentation Earthing

Earthing creates an alternative path for flow of excessive currents safely into the ground in presence of minimal resistance or impedance.

[Contact Us](#)



Englisch

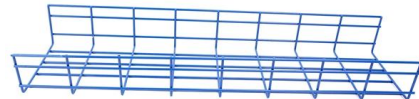
3.1 Equipment-Grounding (PE) bus bar Each assembly e.g. the electrical cabinet, junction box, control desk, etc. must be equipped with a PE-bus bar. The external equipment-grounding-conductors (i.e.

[Contact Us](#)

The Ultimate Guide to Protective Grounding Boxes

Learn everything you need to know about protective grounding boxes, including their importance, benefits, and how to choose the right one.

[Contact Us](#)



Structured Cabling, Grounding & Equipotential Bonding

The structured cabling may consist of up to 90 meters of horizontal cable (uninterrupted solid-copper twisted-pair cable) for the fixed cabling (Permanent Link) between the floor distributor (patch panel)

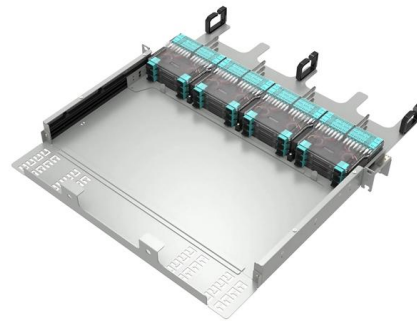
[Contact Us](#)



The Importance of Protective Grounding Boxes

Learn about the benefits of using protective grounding boxes to prevent electrical hazards and ensure worker safety. Find out how these safety devices work and why proper installation is crucial.

[Contact Us](#)



Grounding Electrical Distribution Systems , part of Grounding

The first concern and the most important reason for proper grounding techniques are to protect people from the effects of ground-faults and lightning. Creating an effective ground-fault current path to

[Contact Us](#)



Grounding Practices in Power Distribution Systems

It is absolutely necessary to implement efficient grounding in distribution systems in order to guarantee the safety, dependability, and performance of the electrical

[Contact Us](#)



Understanding the Differences Between Protective

Protective Earthing offers superior safety by providing a direct path to ground, while Protective Neutral is more cost-effective but requires careful maintenance to

[Contact Us](#)





DUKE UNIVERSITY CONSTRUCTION STANDARDS 1

Introduction Grounding is utilized within electrical distribution systems to provide an alternative, low- impedance path around the electrical system for short circuit current to flow during a line to ground

[Contact Us](#)

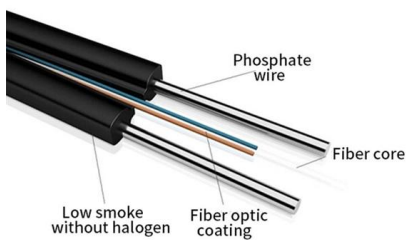


Cable structure

9 Recommended Practices for Grounding

Use equipment grounding conductors sized equal to the phase conductors to decrease circuit impedance and improve the clearing time of

[Contact Us](#)



DISTRIBUTION BOX

Each DISTRIBUTION BOX and controller must be grounded. On the US market, a 5.26 mm² (10 AWG) ground wire must be used, and in all other markets a 6 mm² must be used.

[Contact Us](#)



How do you ground a plastic electrical box

If there is any damage or cracks in the electrical box, you should repair it first before grounding it. In addition, you also need to check whether the

[Contact Us](#)



Understanding Grounding and Bonding: A



Practical

Proper grounding and bonding are fundamental to the safety and functionality of any electrical system. Whether you're a homeowner, an electrician, or an engineer,

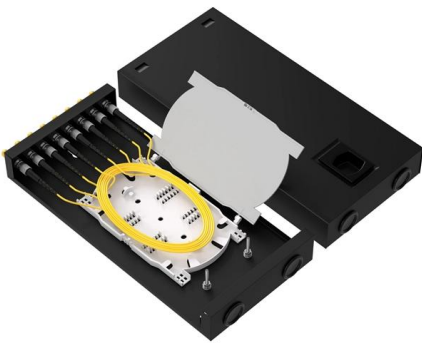
[Contact Us](#)



Correct Connection Method Of Grounding Wire Of

Open the distribution box and find the position marked with the grounding plate or PE letter. This position is the connection point of the grounding

[Contact Us](#)



Grounding Basics: What are the Differences Between

This motor and driver installation and wiring diagram example below shows where PE grounding is necessary in a stepper motor system configuration.

[Contact Us](#)



how do you ground a plastic electrical box

Here are the steps on how to ground a power distribution box: 1. Preparation: First, you need to prepare some necessary tools, including

[Contact Us](#)





Earthing Systems: What You Need to Know

Learn the essentials of earthing systems for your facility. Learn about the three essential earthing systems for the safety of your

[Contact Us](#)



Legrand AV , Understanding Floor Boxes: Applications and Installation

Explore the types, benefits, and installation processes of floor boxes to enhance power and AV connectivity in modern workspaces.

[Contact Us](#)

Practice for good grounding and bonding a home wiring

Bonding and grounding explained All home electrical systems must be bonded and grounded according to code standards. This entails two tasks: First,

[Contact Us](#)



26 05 26 GROUNDING AND BONDING FOR ELECTRICAL SYSTEMS

Bond all communications conduit systems to ground. 3.3 In addition to using the conduit system for grounding, a complete auxiliary green wire equipment grounding system shall be

[Contact Us](#)



Grounding system construction: key points for grounding distribution

Grounding Distribution Boxes: Where Theory Meets Sweaty Palms The Dirty Secrets of "Quick Fix" Installations Picture this scene: An electrician rushes through a distribution box

[Contact Us](#)



Protective grounding requirements for transmission and distribution

Introduction to protective grounding This technical article covers protective grounding requirements for steel tower and wood

[Contact Us](#)

Contact Us

For datasheets, pricing, or custom fiber access solutions, please visit:
<https://frindel.es>