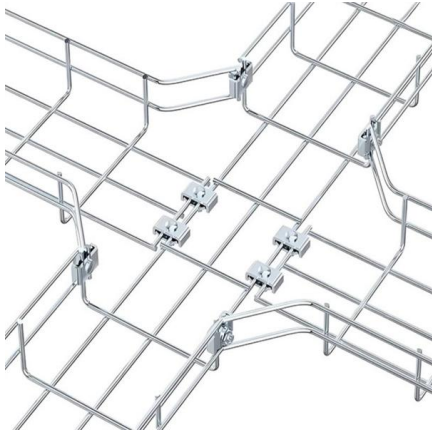


Overhead optical cable overlap of 12 meters





Overhead optical cable overlap of 12 meters



Extending optical fibre cabling: problems and solutions

Overhead networks have many advantages but also have their own set of concerns. One of them is the level of longitudinal elongation of the optical fibre cable. It is

[Contact Us](#)

General Optical Fiber Cable Installation Considerations

Some key considerations for installing optical fiber cable are highlighted below. Failure to follow these guidelines may result in damage or attenuation increases of the optical fiber or cable.



[Contact Us](#)

GAIN AN IN - DEPTH UNDERSTANDING OF



- ① LED DISPLAY PANEL
- ② PROTECTOR OPERATION BUTTONS
- ③ NEUTRAL WIRE OUTPUT TERMINAL
- ④ LIVE WIRE OUTPUT TERMINAL
- ⑤ WORKING CURRENT AND VOLTAGE INSTRUCTIONS
- ⑥ FLAME - RETARDANT SHELL

Incorporation of Optical Attached Cable and Conductors Carrying

Helical fittings with a reinforcing layer are preferred for maximum optical and mechanical protection of the optical cable. They will ensure that mechanical loads are evenly spread and the cables are not

[Contact Us](#)

Overhead Contact System Assembly Guide , PDF

This document provides details on overhead contact wires for electric rail systems, including:
1. Dimensions shown are suitable for 350KCMIL contact wire at 3000lb



General Optical Fiber Cable Installation Considerations

General Optical Fiber Cable Installation Considerations Some key considerations for installing optical fiber cable are highlighted below. Failure to follow these guidelines may result in damage or

[Contact Us](#)



Overhead Fiber Optic Cable Installation Requirements

The distance between poles of overhead lines is 25-40 meters in the urban area, and 40-50 meters in the suburbs, and no more than 67 meters in

[Contact Us](#)



How To Set Up Overhead Fiber Optic Cable? -- ZMS Cable

Fiber optic cable construction is roughly divided into the following steps: preparation -> routing project -> fiber optic cable laying -> fiber optic cable splicing -> project acceptance.

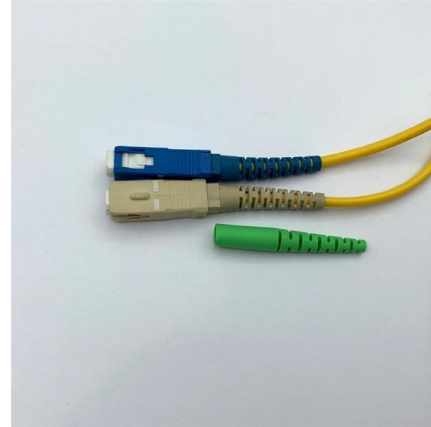
[Contact Us](#)



Overhead Fiber Optic Cable Installation: Requirements

In the realm of optical fiber deployment, overhead installation remains a critical method for rapid and cost-effective network expansion. As a leading provider of

[Contact Us](#)



Overhead Cable Selection and Laying Requirements,

(2) overhead electric pole road fiber optic cable every 3-5 files need U-shaped expansion bending, about 15 meters per kilometer. (3) overhead (wall) fiber optic

[Contact Us](#)



OPTICAL FIBRE CABLE JOINTING

An optical power meter (OPM) is a device used to measure the power in an optical signal. A typical optical power meter consists of a calibrated sensor, measuring amplifier and display.

[Contact Us](#)



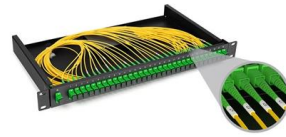
Overhead Fiber Optic Cable Laying Requirements and

Fiber optic cable crossings should be increased trident protection tube protection, each end of the extension of not less than 1 meter. Power poles near the highway

[Contact Us](#)

OPTICAL FIBRE CABLES INSTALLATION

The objective of this document is to be an optical fibre cable installation and laying guide, addressed to new installers, also being useful as a reminder to experienced installers. We should always consider



[Contact Us](#)



Aerial Fiber Optic Cable: What it is and How it Works

I. What is aerial fiber optic cable? Aerial fiber optic cable, also known as overhead fiber optic cable, is a specially designed cable that is installed above ground, usually on utility poles or messenger wires. It

[Contact Us](#)

FOA Standard For Installing Fiber Optic Cable Plants

Outside plant cables often span distances longer than the limits of manufactured cables (5-15 km typically), Deploying cables of lengths >5km can be difficult, so cables may need to be spliced to

[Contact Us](#)



Engineering Recommendation TELE.3 Issue 1 2016

EREC TELE.3 is a code of practice describing overhead to underground connections for optical cable systems on overhead power lines. The document presents typical installation systems and considers

[Contact Us](#)





Overhead Fiber Optic Cable Installation Method and

This document discusses overhead fiber optic cables, which are used for long-distance communications and installed on poles using existing infrastructure; this

[Contact Us](#)



Overhead Fiber Optic Cable: Installation Method and

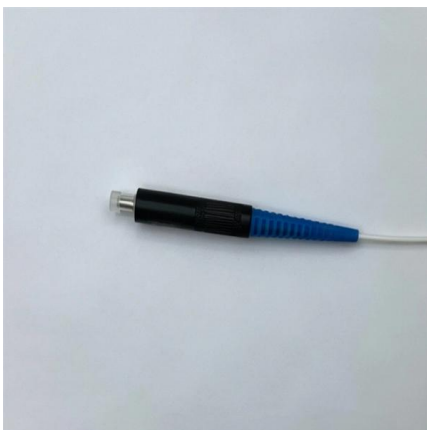
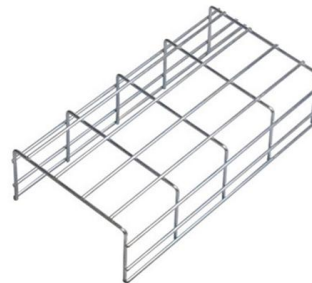
It provides high tensile strength, good performance of mechanical and temperature, and low-cost installation. In this article, you'll be learning about overhead fiber

[Contact Us](#)

How Long Can An Optical Cable Be?

The length of an optical cable can vary significantly depending on the type of fiber used, the application, and the equipment supporting the network.

[Contact Us](#)



Engineering Recommendation TELE.3 Issue 1 2016

However, TELE.3 can be read as a standalone document. EREC TELE.3 is a code of practice describing overhead to underground connections for optical cable systems on overhead power lines.

[Contact Us](#)



Section VII Engineering Instruction OPTCL

The splice box of the aerial optical cable should be kept overhead. Therefore it is necessary to fix & determine the splicing location as per the designated cable drum length.

[Contact Us](#)



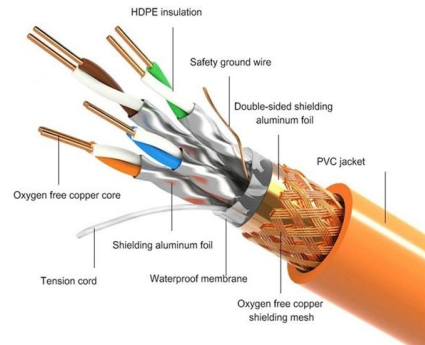
Overhead Optical Cable Construction Guidelines

A special protective sleeve is used to protect the intersection of overhead optical cables, power lines and other communication poles. The

[Contact Us](#)



PRODUCT DETAILS



Optical Fiber Cable Installation Guideline

Installation procedures for open placement of fiber optic cables are the same as for electrical cables. Care should be taken to avoid sudden, excessive force so as not to violate tensile load and radius

[Contact Us](#)



Overhead cable

Power cables and fiber-optic cables that deliver television and broadband services are buried underground. The lesser populated regions of the UK, the countryside

[Contact Us](#)



Fiber Optical Cable Installation and Construction

The optical cable crossing the river is left on the adjacent pole of the first pole on the riverbank: the joint should be left on the joint pole, and each joint

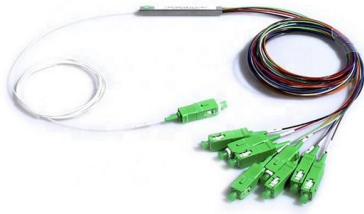
[Contact Us](#)



Investigation of Fiber Optic Cables Installation

Fiber-optic communication cables installed on high voltage transmission line structures are subject to high electric fields, which may cause

[Contact Us](#)



Optical attached cable

Optical attached cable (OPAC) is a type of fibre-optic cable that is installed by being attached to a host conductor along overhead power lines. The attachment system

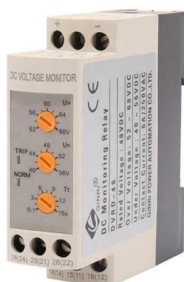
[Contact Us](#)



Overhead Fiber Optic Cable: Installation Method and Requirement

Overhead fiber optic cable is suitable for long-distance lines and dedicated network optical cable lines or some local special sections. It provides high tensile strength, good performance

[Contact Us](#)





Discussion on The Application of Overhead Power Communication Optical Cable

Abstract. Overhead optical cable is an important framework for the power communication network. The common types of optical cables erected with power lines of 35 kV and above

[Contact Us](#)



Contact Us

For datasheets, pricing, or custom fiber access solutions, please visit:
<https://frindel.es>