

Optical and mobile cables are laid in the same cable tray





Overview

Cable trays are a support system for electrical cables, power, signal, and communication and optical fiber cables. The purpose of this AE Note is to outline the use of fiber optic cables in "tray rated" environments. NEC section 300-8 does not permit any tube, pipe, or equal for water, air gas, drainage, steam, or any service other than electrical in raceways or cable trays containing. en completely installed, without damage either to conductors or structural system use maintain spacing or to keep cables in place when the tray is ect the minimum bend ra-dius for cables as they exit the bottom of the cable tray. NEC Article 392 explains cable trays, their components, appropriate wiring methods for cable trays, and instances where they are and are not permitted for use. - Installation of perforated GI Cable tray of size 300 x 50 mm at height ~12 meter on wall and existing metal support structure.



Optical and mobile cables are laid in the same cable tray



Cable Tray Questions , Cable Tray Institute

Question 1: Can mechanical utility piping or tubing containing water or compressed air be installed in cable trays with electrical cables?
Answer: No. Cable trays are a support system for electrical cables,

[Contact Us](#)

fiber optic cable installation .

The fiber optic cables transmit light rather than electronic signals eliminating the problem of electrical interference . Then why as per NEC 770.52 the conductive optical fiber cables are not

[Contact Us](#)



FIBER OPTIC TRAY CABLES

WHAT IS A FIBER OPTIC TRAY CABLE (FOTC)? The term "tray cables" has gained significant market focus recently, but a wide range of cables can be installed in a cable tray. OCC FOTC cables will

[Contact Us](#)



Cable Tray Questions , Cable Tray Institute

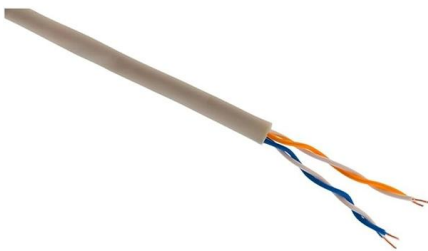
The number and type of conductors that can be installed in a cable tray is also limited by the weight of the cables and other load factors for the cable tray for a given load rated cable tray. See NEMA VE-1



A Comprehensive Guide to Tray Cable

Since cable trays do not fully enclose cables, which would be the case with cable raceway or ducts, tray cable must conform to strict requirements to

[Contact Us](#)



Installation Of Cable In Cable Trays: NEC, Safety

Cable installed in tray is subject to many of the same considerations as cable being installed in conduit systems. Correctly calculated data and adherence to the

[Contact Us](#)



Fiber and Power in the Same conduit?

Conductive optical fiber cables shall not be permitted to occupy the same cable tray or raceway with conductors for electric light, power, Class 1, non-power-limited fire alarm, Type ITC, or

[Contact Us](#)





Cable Tray Questions , Cable Tray Institute

NEC section 318-5 (e) indicates that multiconductor cables rated 600 volts or less are permitted in the same cable tray, however, separation of power and control cables is necessary as indicated in other

[Contact Us](#)



Cable tray restrictions where power and data share a common tray

I have surveyed a site where power wiring and data wiring share the same 18inch cable tray mounted above the racks in an article 645 space (with no raised floor?). The power wiring is type

[Contact Us](#)

The Ins and Outs of Optical Fiber Cable Installation

Nonconductive optical fiber cables cannot occupy a cabinet, outlet box, panel, or similar enclosure housing the electrical terminations of an electric light, power,

[Contact Us](#)



Cables Allowed in Tray

This test involves loading multiple cables in a vertical section of cable tray and igniting the cable at the base of the tray. The cable passes the test if it does not propagate the fire.

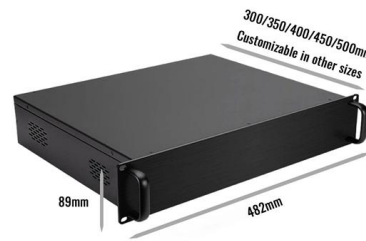
[Contact Us](#)



Cable Trays and Optical Cables

The question arises as to what listing is required for an optical fiber cable installed in a cable tray. While there are several specific types of listings for power cables, specifically for tray

[Contact Us](#)



Explaining NEC Article 392 on Cable Trays

Cables rated 600 volts or less can be installed together in the same cable tray without additional separation, provided they meet the NEC

[Contact Us](#)

Fiber and Raceway Flashcards , Quizlet

Study with Quizlet and memorize flashcards containing terms like What materials make up composite optical fiber cable?, Conductive optical fiber can occupy the same cable tray, raceway, box,

[Contact Us](#)



Core Principles for Electrical and Instrumentation Cable

By adhering to these principles, E& I cable tray layouts can achieve the essential balance of safety, efficiency, and durability. A well-planned layout not only meets

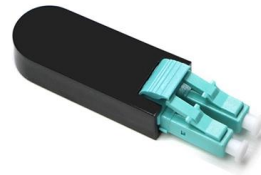
[Contact Us](#)



Cable Tray Technical Guide A practical guide to product selection and

Cable tray is considered to be a system. It must provide continuous support for cables, and the electrical continuity of the cable tray system must be maintained.

[Contact Us](#)



Precautions for Cable Tray Installation

Cable Tray Installation Guide The correct installation of cable trays is crucial for establishing a reliable and efficient cable system. It ensures that cables are

[Contact Us](#)

Cable Laying: Everything You Must Know

After determining the routing of the cabling, a structured cabling project initially needs to consider the laying of cable trays, which can be made of metal, conduit, or

[Contact Us](#)



CTI Technical Bulletin

Non-conductive optical fiber cables can occupy the same cable tray or raceway with conductors for electrical light, and other power circuits, conductive optical fibers cannot.

[Contact Us](#)



ITER Cabling Handbook

If two cables belonging to incompatible families (for the definition of families, refer to ITER EDH Electromagnetic Compatibility) have to share the same cable tray, a metal vertical cable tray divider

[Contact Us](#)



Cable Tray Technical Guide A practical guide to product selection and

SOLID-BOTTOM CABLE TRAY Providing additional cable protection, solid-bottom cable tray is sometimes preferred to support and protect numerous small instrumentation and control cables.

[Contact Us](#)

Annex I

This document deals with cables trays, cables and connector installation and segregation, cable trays earthing and E.M.C. directives. These rules shall be applied in the cabling engineering workflow for

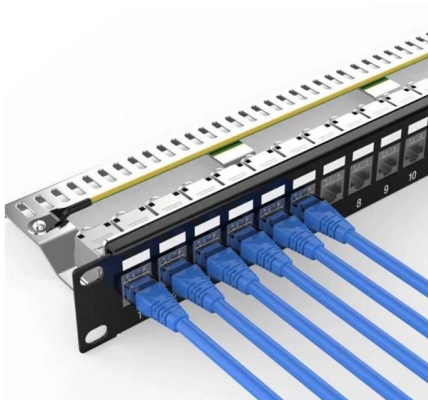
[Contact Us](#)



fiber optic cable in tray with MC cable.

I am working a job were metal clad fiber optic cable 770.4 (B), is being installed in the same tray as MC power cable. This seems to be a violation of 770.52. The contractor insists by the

[Contact Us](#)



NEC True or False Flashcards , Quizlet



Types of Cable Typically Used in Cable Tray

Type ITC - Instrumentation Tray Cable - (NEC Article 727) - These types of cables are instrumentation cables and are available in shielded or unshielded

[Contact Us](#)



Contact Us

For datasheets, pricing, or custom fiber access solutions, please visit:
<https://frindel.es>