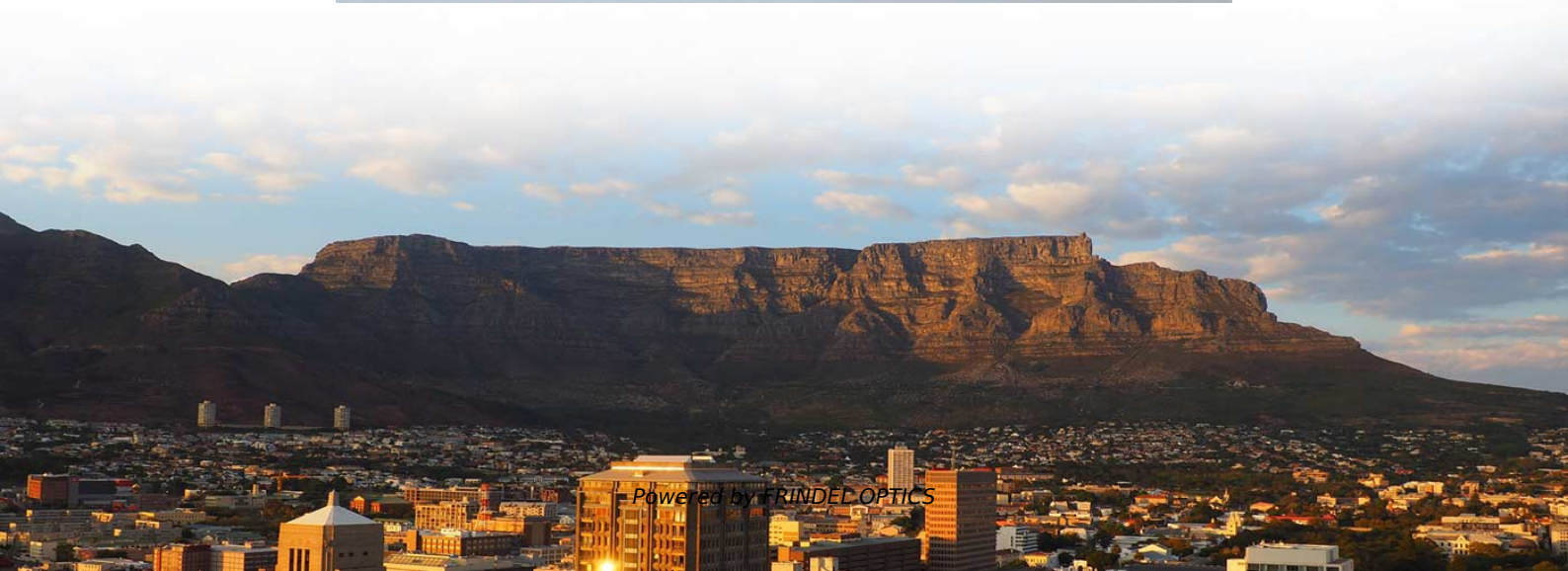


Optical Module Threshold Calculation





Optical Module Threshold Calculation



Configuration Guide for Cisco NCS 1001, IOS XR

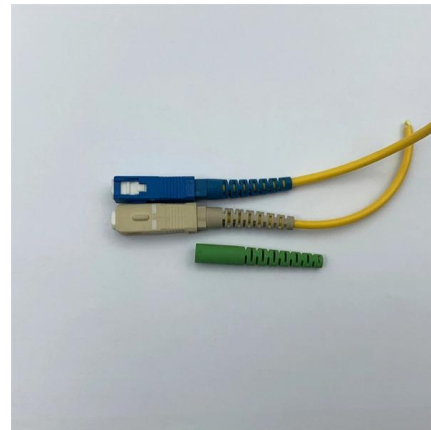
When you plan to replace a configured optical module with a different type of optical module, you must clear the configurations of the old module before you install the

[Contact Us](#)

What is the Tx and Rx Power of an SFP Optical

In a fiber link, the Rx/Tx power of an optical module is sufficient to ensure the stable operation of the fiber link. Do you know the Tx and Rx power of

[Contact Us](#)



Threshold design in fiber termination identification using local

We study how to set a threshold for how to identify the end of an optical fiber by reflectance ratio between wavelengths calculated from measurements of a temporary optical coupler

[Contact Us](#)



Optical Link Budget Calculation for SFP Modules Explained

Learn optical link budget calculation for SFP modules with formulas, real examples, fiber loss breakdown, and troubleshooting tips for reliable links.



Coherent , Laser Damage Threshold Calculator

Gaussian Beam Profile Pyroelectric - Energy Thermopile - Power Optical - Power Energy Damage Threshold J/cm^2 J/cm^2 MaxBlack

[Contact Us](#)



Laser Damage Threshold Calculator , Edmund Optics

Description The laser induced damage threshold (LIDT) of an optical component is dependent on wavelength, pulse duration, and beam diameter. If an optic's specified LIDT is at a different

[Contact Us](#)



Enabling the Optical Module Alarm Threshold Standardization Function

The system automatically obtains the vendor-defined power threshold of an optical module and compares it with the actual power. If the actual power exceeds the vendor-defined threshold, an

[Contact Us](#)





Chapter 10 Coherent Optical Communication Systems

10.1 Introduction The commercialization in 2008 of the first 40 Gb/s coherent optical communications systems employing polarization division multiplexing (PDM) Quadrature phase-shift keying (QPSK)

[Contact Us](#)



Optical-Module Parameter Inquiry and Alarm Configuration

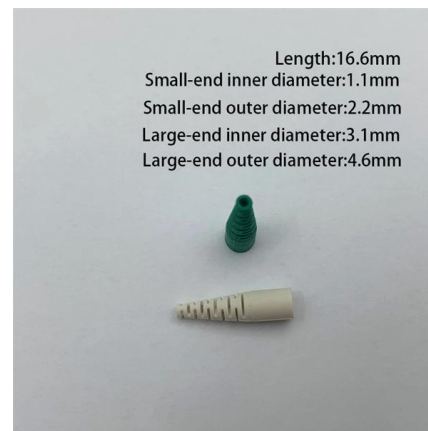
Chapter 1 Optical-Module Parameter Inquiry and Alarm Configuration 1.1 Introduction of Optical Module's Parameters The parameters of optical module include the light transmission power, the

[Contact Us](#)

How to Calculate Optical Power Budget

Calculate optical power budget step-by-step. Learn the formula, fiber losses, connector attenuation, and practical examples for optical transceivers.

[Contact Us](#)



SFP Optical Module Specifications: Standards & Performance

This guide dives into the key SFP Optical Module Specifications that engineers, network architects, and procurement professionals rely on when evaluating optical transceivers.

[Contact Us](#)





Ophir Calculators

Quantify laser diffraction-limited focal spot size, assuming an ideal lens without aberrations and a collimated laser beam. Temperature Rise Calculator Compute the temperature increase in a block of

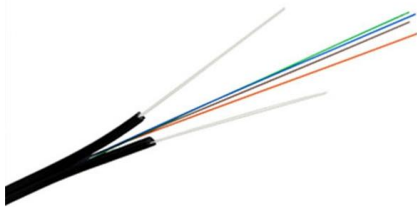
[Contact Us](#)



Follow NCS1001 Network Design Best Practices

A threshold of -20.0 dBm to -25.0 dBm suffices for the majority of use cases. Configure thresholds for the Optical Supervisory Channel (OSC) and COM-CHK,

[Contact Us](#)



Brillouin Threshold Calculator

Brillouin Threshold Calculator Predict Brillouin onset for robust optical designs fast. Compare effective length methods and correction factors. Export results, validate inputs, and document calculations

[Contact Us](#)



Introduction to Modulation Transfer Function , Edmund

Want to know more about the Modular Transfer Function? Learn about the components, understanding, importance, and characterization of MTF at Edmund

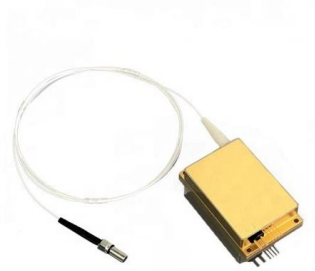
[Contact Us](#)



Calculating Optical Power Budgets

Hello everyone, I have to calculate some optical budgets for a network (Single Mode) that I am designing. It's my first time doing this, and I am a little bit confused. I know how to get the

[Contact Us](#)



Optical Loss Budget Transceiver Sizing: Fiber Math That Works

The goal of an optical loss budget transceiver calculation is to ensure your actual received power stays above the minimum receiver threshold with margin for worst-case conditions.

[Contact Us](#)

Cisco ASR 901 threshold logic

Learn how Cisco ASR 901 router uses optical transceiver threshold tables to identify SFP modules and prevent alarm issues with third-party transceivers.

[Contact Us](#)



Acceptable Light Levels for Fibers and the Optical Power Budget

The maximum length of fiber optic cables is limited by the transmitter's output power and receiver's sensitivity. Calculating the Optical Power Budget Calculating the optical power budget is important in

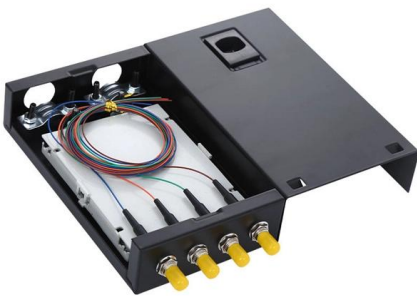
[Contact Us](#)



Optical Budget and dBm Power

Optical Budget Calculation Accurate optical budget calculation is critical for reliable system performance. Formula: Optical Budget (dB) =

[Contact Us](#)



Setting Optical Power Alarm Thresholds

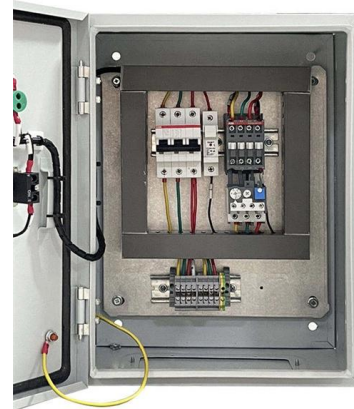
The configured optical power alarm thresholds must be within the default range. The default optical power alarm thresholds are proper values verified by testing. Therefore, it is not recommended to

[Contact Us](#)

Semrock Laser Damage Threshold Calculator

Identify a Laser Damage Threshold (LDT) of pulse fluence or intensity below which no damage is likely to occur to your optical filter. Calculate now.

[Contact Us](#)



ONT Optical Parameter

Overview of ONT Optical Parameter The ONT Optical Parameter feature allows you to configure thresholds of the optical transmit (TX) and receive (RX) parameter of an ONT. When the received

[Contact Us](#)



Configuration Guide for Cisco NCS 1001, IOS XR

When you plan to replace a configured optical module with a different type of optical module, you must clear the configurations of the old module before

[Contact Us](#)



Understanding TX/RX Power Range in Optical Networking

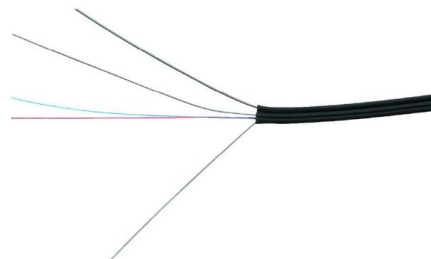
The TX/RX power range is a critical aspect of optical networking, particularly in fiber-optic communication systems. It determines signal strength, transmission distance, and overall network

[Contact Us](#)

Understanding Optical Transceiver Performance: TX

Explore the key concepts of TX Power and RX Sensitivity in optical transceivers. Learn how to calculate the power budget and select the right SFP

[Contact Us](#)



From Shannon Capacity to OSNR and GOSNR: A

From Claude Shannon's groundbreaking information theory to the practical implementation of Optical Signal-to-Noise Ratio (OSNR) measurements

[Contact Us](#)



Receiver Sensitivity vs Minimum Receiver Power: A Deep Dive into

Though often used interchangeably, they represent distinct performance thresholds that significantly impact your optical module link budget and network reliability. This guide unpacks their

[Contact Us](#)



Adaptive-Threshold Detection Technology 8

The transmission of optical signals in atmospheric turbulent channels causes signal fading and light intensity flicker, and the baseband signal cannot be recovered correctly by fixed threshold detection

[Contact Us](#)

Contact Us

For datasheets, pricing, or custom fiber access solutions, please visit:
<https://frindel.es>