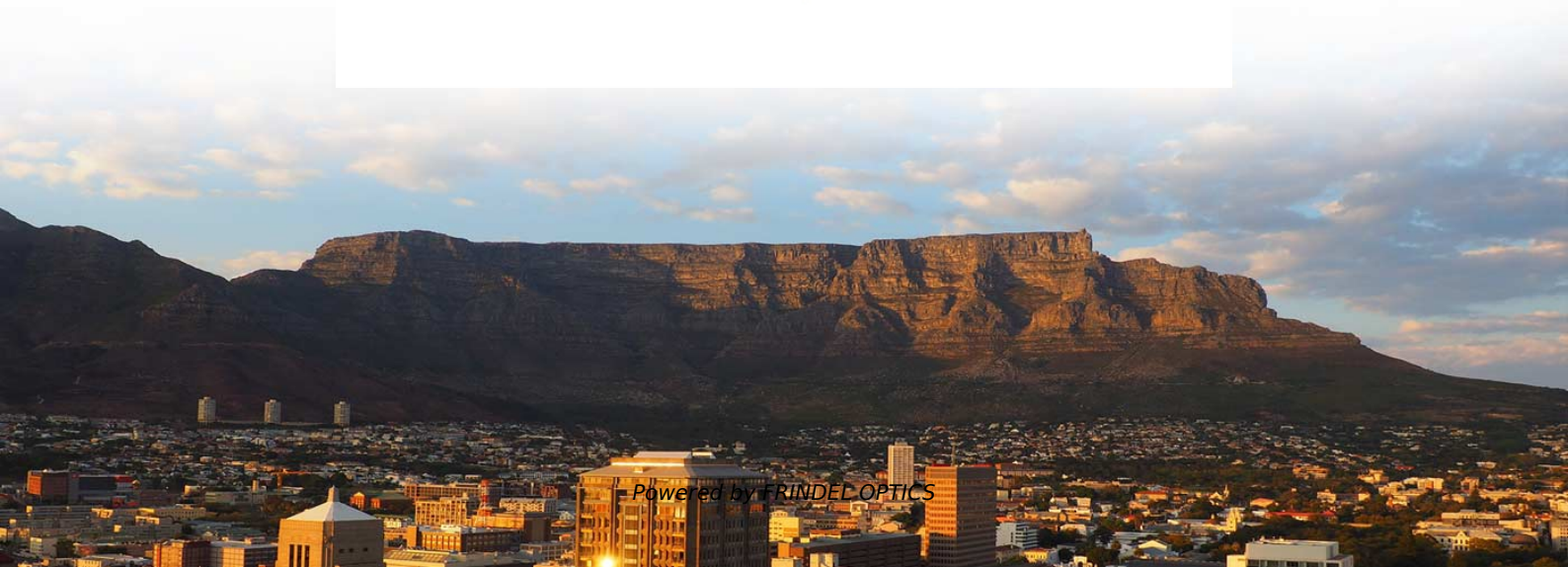
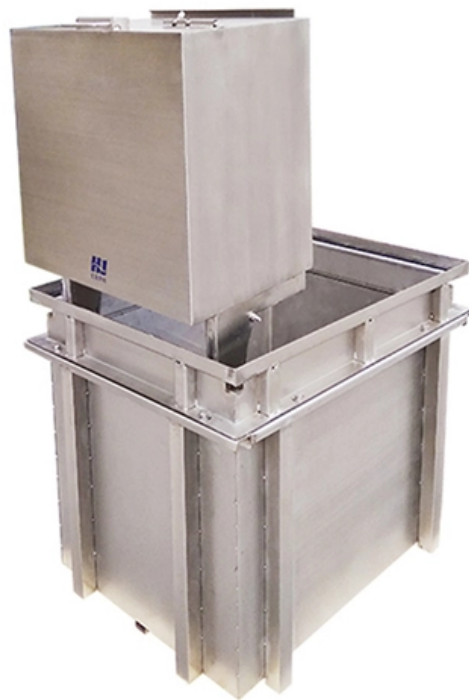


Optical Module Test Jumper Insertion and Removal Mechanism





Optical Module Test Jumper Insertion and Removal Mechanism



Optical Transceiver Module Installation And Removal

Conclusion Mastering the installation and removal of optical transceiver modules is essential for maintaining a robust and efficient optical network. By

[Contact Us](#)

How to use a One Test Jumper Method to Measure the

This video explains how to use a one test jumper method using the Tempo Communications Optical Power Meter and Stabilized Light Source to

[Contact Us](#)



TR-3552: Optical network installation guide

Disconnect test jumper #1 at the power meter and insert a second test jumper (test jumper #2), using an adapter, between the jumper used in Step 1 and the optical power meter (see Figure 13).

[Contact Us](#)

Optical Jumper & Adaptor

Push-pull mechanism, fast connection and removal Standard plastic parts, good interchangeability First lock the switch for reliable connection * Ceramic pins, PC, UPC and APC grinding Can provide PVC



Unveil the Secrets of SFP Module Installation and Removal

SFP module installation and removal are straightforward processes. However, you might need to refer to the datasheet or user manual of any new

[Contact Us](#)



MT-Jumper-JPT Laser

By miniaturization, high precision and customized design, MT-jumper solves the contradiction between the limited space inside the high-speed optical module and the high-density wiring.

[Contact Us](#)



SEAFOM TSD-02 November 2016

Unified standards are defined for housing dimensions and unlocking mechanisms, allowing smooth insertion, locking, unlocking, and removal of optical modules from the host port.

[Contact Us](#)





Optical fiber jump wiring method

The quality of fiber jumper management directly affects the overall data transmission. Good management of fiber jumper can not only reduce the

[Contact Us](#)



How to Test Fiber Optic Link Loss

So what makes the reference line different from the typical jumper? The reference line is a high-quality test line with reference level connector

[Contact Us](#)

What test procedures are required for high-quality

In this article, ETU-LINK will reveal the important tests that high-quality optical modules must pass, and the impact of these test results on the quality of optical

[Contact Us](#)



Three Fiber Jumper Quality Tests: IL, RL & End Face

Learn the 3 key tests for fiber jumpers--3D metrology, insertion & return loss, and end-face inspection--to ensure high-quality fiber optic performance.

[Contact Us](#)

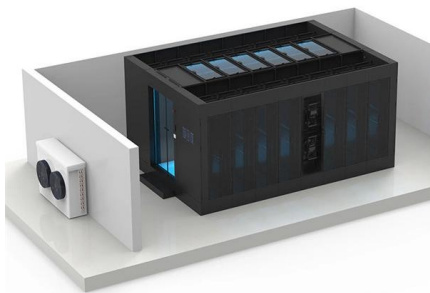
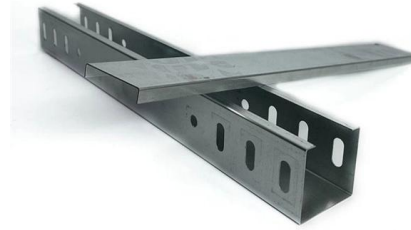
How to Install and Remove SFP Transceiver



Modules?

Avoid getting dust and other contaminants into the optical ports of your SFP modules, because the optics will not work correctly when obstructed by dust. Transceiver modules are

[Contact Us](#)



FS 800G& 400G Transceiver Acceptance Testing Guide

After removing the cables, protect them by inserting clean dust covers over the pluggable modules. Be sure to clean the optical surfaces of the cable before inserting it back into the optical port of another

[Contact Us](#)

FA Test,JUMPER Test

Integrated into the insertion and return loss meter, it enables one-step IL, RL, and polarity testing for FA/JUMPER devices. This testing solution can automatically

[Contact Us](#)



The FOA Reference For Fiber Optics

The test conditions are similar to how the actual cable plant will be used when communications equipment is connected (see below.) For insertion loss testing,

[Contact Us](#)



AI detection of poor contact faults in optical fiber jumper joints

Traditional optical fiber line detection methods can only locate faults after they occur, lacking real-time monitoring and early warning capabilities. To address this issue, this paper

[Contact Us](#)



KEY FEATURES APPLICATIONS

PRODUCT DESCRIPTION The MS12 modules combine advanced time-domain technology with a unique wide-aperture integrating cavity. An internal monitoring channel and a return loss reference

[Contact Us](#)

Understand one, Two, and Three Jumper Reference Methods

The Two-Jumper Reference Method Sometimes, you might encounter situations where the two-jumper method is necessary, especially if the connectors on your test equipment and the

[Contact Us](#)



How to Test Fiber Optic Cables: 9 Steps

While there are many different fiber optic cable tests, the most common version is an insertion loss test, also known as an attenuation, jumper, or connectivity test. This test requires a

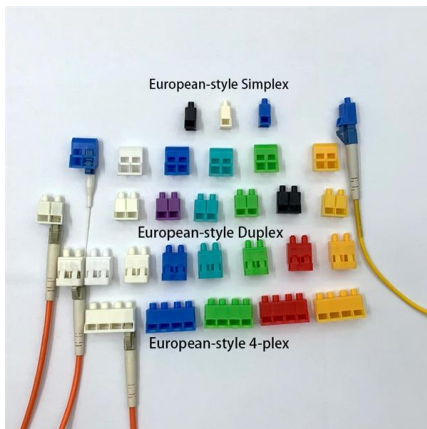
[Contact Us](#)



Jumper of optical module

A large number of fiber optic jumpers are required between different racks and data center facilities on different floors to connect optical modules and ensure efficient operation of the data center.

[Contact Us](#)



Link Attenuation Testing Tutorial w/ case study OptiTap Jumpers for

The following steps describe referencing jumpers for power-through testing an FTTX system consisting of an SCAPC OptiTap ports on one end and SCUPC connectors on the other.

[Contact Us](#)

An Optimal Jumper-Insertion Algorithm for Antenna Avoidance/Fixing

In this paper, we focus on one reliability issue--jumper insertion in routing trees for avoiding/fixing antenna-effect violations at the routing/postlayout stages. We formulate the jumper insertion for



[Contact Us](#)



Jumper insertion loss analysis

Patch cable insertion loss is a relative measure of power reduction when additional passive components are added to an optical path. Therefore,

[Contact Us](#)



FS 800G& 400G Transceiver Acceptance Testing Guide

These modules play a crucial role in establishing high-quality links that are zero-packet-loss, non-blocking, and low-error. The installation, removal, replacement, and maintenance of optical modules

[Contact Us](#)



03
**Easy
installation**
Meticulous workmanship
Reasonable structure
Stable performance

FA/JUMPER Test Solution

Integrated into the insertion and return loss meter, it enables one-step IL, RL, and polarity testing for FA/JUMPER devices. This testing solution can automatically test IL, RL, and polarity.

[Contact Us](#)

Contact Us

For datasheets, pricing, or custom fiber access solutions, please visit:
<https://frindel.es>