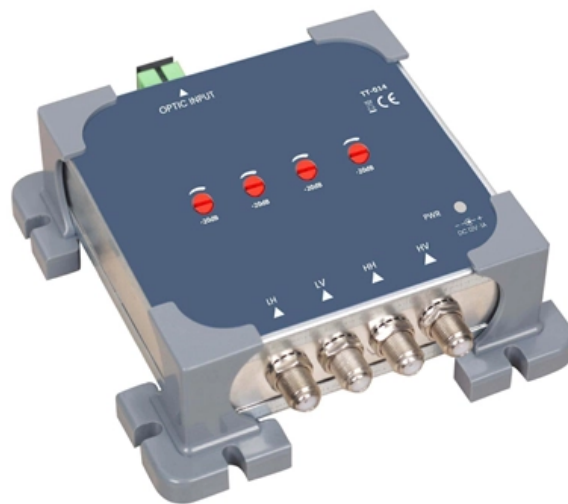


On-site construction of cable tray bends





Overview

The bends, tees, crosses, risers and reducers of wire mesh cable tray can be easily and quickly made live at the project by using a bolt cutter. Since the jaws of the bolt cutter drags a layer of zinc across the cut end and forms a protective layer. maintain spacing or to keep cables in place when the tray is ect the minimum bend ra-dius for cables as they exit the bottom of the cable tray. A rung spacing of 6 to 9 inches (150 to 230 mm) is preferable when the cable tray cont d for instrumentation and control applications that require.



On-site construction of cable tray bends



Technical Specification for Cable tray installation and cable laying work

Approval of IPR shall be obtained for site preparation and marking the cable tray routes and locations of cable tray support before proceeding with the erection and installation work.

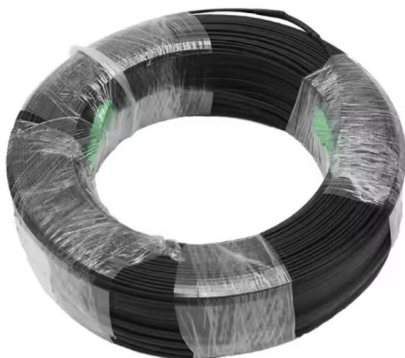
[Contact Us](#)

Cable Tray Technical Guide A practical guide to product selection and

Cable Tray Technical Guide A practical guide to product selection and installation This guide for engineers and installers has been developed by ABB as a practical reference regarding cable tray



[Contact Us](#)



Guide to cable support systems

The easily sep-arable wires and the bending capacity of the mesh cable trays enable the simple creation of bends, branches and exits. Four different mesh cable tray types are available, depending on the

[Contact Us](#)

Industrial Cable Tray Manufacturer & Supplier in India

High-load galvanized perforated & ladder cable trays. Leading industrial cable tray manufacturer & supplier in India. Custom sizes, full accessories, quick installation.



Cable Tray Bend and Offset Formulas , PDF

The document discusses Metstrut cable tray systems, including their configuration, materials, dimensions, and compliance with industry standards. Key points: -

[Contact Us](#)



CABLE TRAY SYSTEMS GUIDE

The Ladder Tray features light, rugged, tubular steel construction. It is designed for mechanical support and strain relief in long runs of cable and creates a smooth gradual bend for cable.

[Contact Us](#)



Method Statement installation of Cable Trays and Ladders

This method statement covers the site installation of the cable tray & ladders and the requirements of checks to be carried out.

[Contact Us](#)





CUTTING GUIDELINE

Where products have to be cut at irregular distances, we recommend having the open cut end placed inside where possible (I.e. open ends of support inside the starter bracket, open ends for ladders and

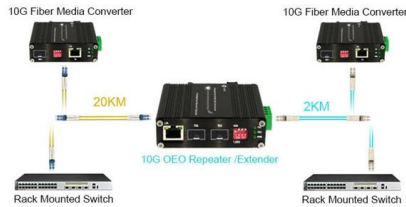
[Contact Us](#)



Metalix Cable Trays

We specialize in providing an extensive selection of cable tray bends designed to meet the specific needs of diverse projects, from gentle curves to intricate

[Contact Us](#)



How to Install Cable Tray: A Comprehensive Guide to Different Cable

Welcome to our step-by-step guide on installing cable trays! In this video, we'll explore the different types of cable trays available and provide detailed instructions for their installation.

[Contact Us](#)



Beama Best Practice Guide , Installation Of The System , Cable

2.2 Structural characteristics When considering the installation of the cable supports system it is imperative to avoid the cutting or drilling of structural building members without the approval of the

[Contact Us](#)



Cable Tray Technical Guide A practical guide to product selection and

A practical guide to product selection and installation This guide for engineers and installers has been developed by ABB as a practical reference regarding cable tray characteristics, installation, and



[Contact Us](#)



How to make a bend on an open cable tray

This video shows you how easy it is to form and bend an open cable tray from SILTEC - suitable for cables and pipes. See how easy it is to cut the threads away and bend the tray.

[Contact Us](#)

Bend Cable Trays, Cable Trays, Cable Tray Bend,

Bend Cable Trays Vertical Inner Bend Cable Tray We offer our clients a wide variety of high quality Vertical Inner Bend Cable Tray that is manufactured from the



[Contact Us](#)



Best Practice Guide to Cable Ladder and Cable Tray Systems

This publication is intended as a practical guide for the proper and safe* installation of cable ladder systems, cable tray systems, channel support systems and associated supports.

[Contact Us](#)



Gutter bend

Change of direction=Vertically descending, Angle=90°, Construction type=Bend rigid, Bend model=Smooth bend, With cover=no, Inner radius=199 mm, Cable tray height=110

[Contact Us](#)



Assembly Guide

Assembly Guide The bends, tees, crosses, risers and reducers of wire mesh cable tray can be easily and quickly made live at the project by using a bolt cutter. Since the jaws of the bolt cutter drags a

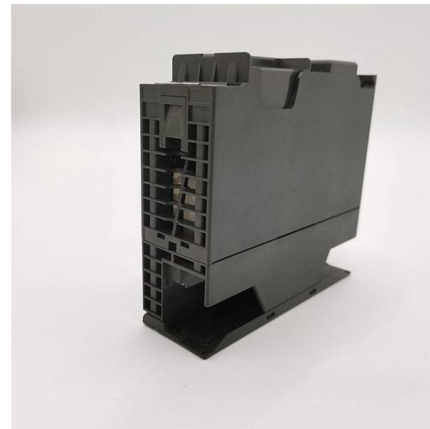
[Contact Us](#)



Best Practice Guide to Cable Ladder and Cable Tray Systems

This guide covers cable ladder systems, cable tray systems, channel support systems and associated supports intended for the support and accommodation of cables and possibly other electrical

[Contact Us](#)



Cable tray manual

Where a cable tray wiring system containing Type ITC cables will be exposed to any significant amount of hot metal splatter from welding or the torch cutting of metal during construction or maintenance

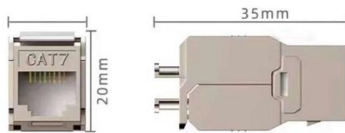
[Contact Us](#)



Full cable tray systems specification document

Splice plate construction shall be such that a splice may be located anywhere within a continuously supported span without diminishing rated loading capacity of the cable tray.

[Contact Us](#)



Full cable tray systems specification document

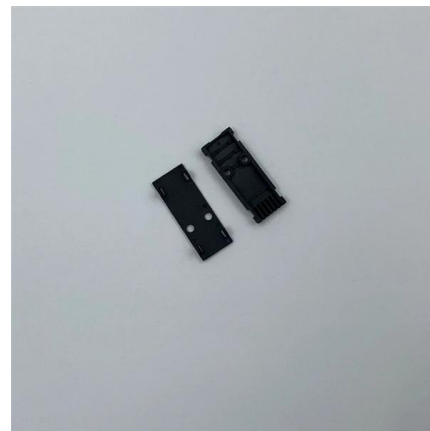
B. Cable tray systems are defined to include, but are not limited to straight sections of [ladder type] [trough type] [solid bottom type] [channel type] cable trays, bends, tees, elbows, drop-outs, supports

[Contact Us](#)

Cable Tray Installation Guidelines , PDF , Galvanization

This document provides details on installing cable trays and their support systems. It includes diagrams showing how to mount cable trays on walls using pre

[Contact Us](#)



Cable Tray Systems: Requirements and Best Practices

Comprehensive guide to cable tray systems requirements: tray types, materials, loading, supports, bonding, routing, and best practices for safe electrical cable management.

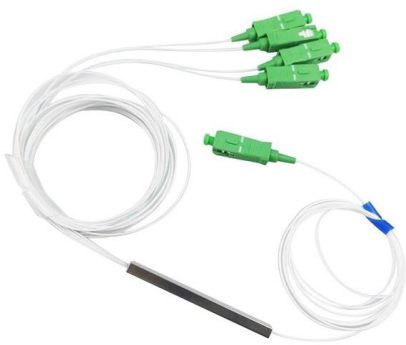
[Contact Us](#)



Metalix Cable Trays

Bends-Cable Trays Our company is a trusted manufacturer of high-quality bends for cable trays, engineered to provide seamless transitions and superior support in

[Contact Us](#)



Assembly Guide

Guide for making bends, tees, crosses, risers and reducers from straight sections of wire basket cable trays live at the project.

[Contact Us](#)

Contact Us

For datasheets, pricing, or custom fiber access solutions, please visit:
<https://frindel.es>