

# **Number of 685nm laser diodes in Poland**





## Number of 685nm laser diodes in Poland

---



### LP685-SF15

One-Click download of multiple documents available from the shopping cart. No purchase necessary. One year warranty for unopened products. Warranty is void after opening the package. Compliance

[Contact Us](#)

### Laser Diodes , Farnell Poland

Buy Laser Diodes. Farnell Poland offers fast quotes, same day dispatch, fast delivery, wide inventory, datasheets & technical support.

[Contact Us](#)



### 685nm Red Diode Laser System , LGI

685nm Red Diode Laser System up to >20mW  
The RML-series 685 nm red diode laser is constructed with features of high stability, low noise option, FDA compliance, ultra-compactness, long lifetime,

[Contact Us](#)

### Laser Diodes For Business

Check out our collection of 685 nm Fabry-Perot laser diodes with different optical powers. You can pick from Single-Mode (SM), Polarization-Maintaining (PM) or Multimode (MM) optical fibers, depending



### Laser Diode Manufacturers

The leading Laser Diode Manufacturers in Poland are listed in this directory. You can narrow down the list of manufacturers based on their location and capabilities, browse their product catalogs, view

[Contact Us](#)



### 685nm Laser Diode, 22mW, Coaxial Package with PM Fiber

Model LD4B-685-FP-20 , 685nm Laser Diode The model LD4B-685-FP-20 is a Fabry-Perot laser diode offered in a PM fiber-coupled coaxial package with an internal photodiode.

[Contact Us](#)



### Red laser Ushio laser diode HL6750MG-A 685nm 55mW

The laser light is harmful to human body especially to eye no matter what directly or indirectly. The laser beam shall be observed or adjusted through infrared camera or equivalent. This product (without

[Contact Us](#)





### Laser Diode HLD685035K5J Red Single Transverse

Laser Diode HLD685035K5J Red Single Transverse Mode 685nm 35mW TO-18 5.6mm Medical Laser Diodes Specifications: Wavelength: 685nm Light Output:

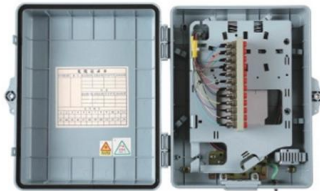
[Contact Us](#)



### Laser Diode, 685nm, 45mW, narrow linewidth laser

All SureLock(TM) Series laser diodes are stabilized using the Ondax PowerLocker® Volume Holographic Grating (VHG), ensuring precise, ultra-stable center

[Contact Us](#)



### Ushio launches 685nm Wavelength Red Laser Diode "HL67241MG"

To address these needs, Ushio has developed the new red laser diode "HL67241MG" with wavelength of 685nm, optical output power of 50mW (CW), 200mW (Pulse) while maintaining good

[Contact Us](#)



### WLD-100-685

The WLD-100-685 from World Star Tech is a Continuous Wave Red Laser Diode that operates at a wavelength of 685 nm. It delivers an output power of 105 mW and

[Contact Us](#)



### **685nm Red Laser Diode, 50mW Output, from USHIO**

Product Overview 685nm, 50mW Red Laser Diode This 50mW USHIO 685nm red laser diode delivers CW output power for illumination applications. The device

[Contact Us](#)



### **FLX-685-800M-100**

RPMC Lasers Inc. offers an extensive range of laser products and services, including laser diodes, continuous wave (CW) lasers, pulsed lasers, and optical amplifiers. Their products cater to diverse

[Contact Us](#)

### **685nm 10mW Pigtailed Laser Diode**

Their plug and play operation make these laser diodes ideal for a wide range of laboratory and OEM applications. Note: Compatible accessories for individual stock numbers may vary. If unsure about

[Contact Us](#)



### **685nm 20mW Laser Diode, Butterfly Package PM fiber**

Model LD4B-685-FP-20 , 685nm Laser Diode Product Description The model LD4B-685-FP-20 is a Fabry-Perot laser diode offered in a PM fiber-coupled butterfly

[Contact Us](#)



## DL685 Series 685nm Diode Laser System up to 20mW

The DL685 series diode laser is ideal for applications that require a wavelength of 685nm and output power levels up to 20mW. The laser features a compact design, long operating lifetime, easy

[Contact Us](#)



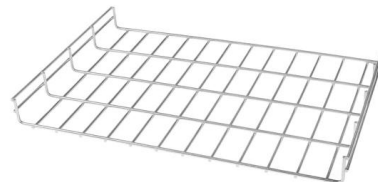
### DATA SHEET

Proprietary design, packaging, and fiber coupling processes produce laser diodes with very high stability and low noise. Each laser diode is subject to extensive testing and burn-in before shipment to ensure

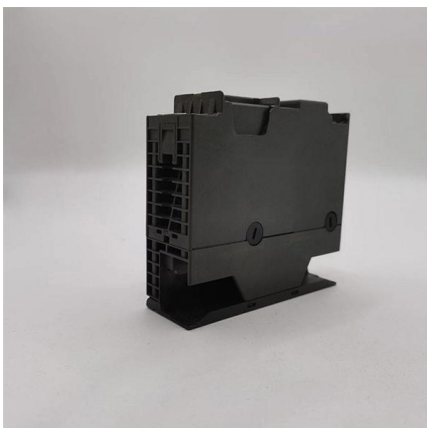
[Contact Us](#)

## LASER TREE 685nm 25mW Red Fiber Coupled Laser Diode

Laser Specifications LT-FCLD-M685025.pdf  
OPTICAL SPECIFICATIONS Output  
Wavelength:685nm Red Diode Laser Output  
Power:25mW Fiber Length: 1m Fiber Core  
Diameter:9um Fiber



[Contact Us](#)



### Sales Locations

Find Diodes Incorporated Worldwide Sales Locations and Distributors, Sales Representatives, Corporate Headquarters, and Support Contact information.

[Contact Us](#)

685 nm laser



Our 685 nm laser Here is our selection of solid state 685 nm lasers. They are diode lasers with powers up to 40 mW. The lasers are can be used individually or combined with other wavelengths into a

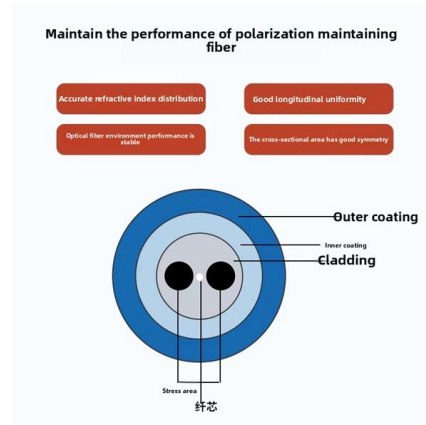
[Contact Us](#)



### 685nm Laser Diode, 22mW Coax Package with SM Fiber

Model LD4B-685-FP-20, 685nm Laser Diode The model LD4B-685-FP-20 is a Fabry-Perot laser diode offered in a single mode fiber-coupled coaxial package with an

[Contact Us](#)



### High Power Diode Laser Equipment Manufacturers & Suppliers in

High Power Diode Lasers are the backbone of these establishments, offering permanent hair removal solutions that cater to the diverse skin phototypes found across Central Europe.

[Contact Us](#)



### FLX-685-800M-100

Laser Type: CW-Laser-Diodes Continuous-wave (CW) laser diodes excel in telecommunications, medical applications, industrial processing, and scientific research due to their ability to produce a

[Contact Us](#)



### **685nm 10mW Pigtailed Laser Diode**

Pigtailed Laser Diode Modules are available with VIS and NIR wavelengths ranging from 405 to 1550nm, with output powers ranging from 1 to 100mW. Their plug and play operation make these laser diodes

[Contact Us](#)



## **Contact Us**

---

For datasheets, pricing, or custom fiber access solutions, please visit:  
<https://frindel.es>