

Norway installs special optical cable G 657A1





Norway installs special optical cable G 657A1



Single Mode Fiber: G652D vs G657A1 vs G657A2

As a reliable high-performance bending insensitive single mode fiber, G657A1 has superior bending performance compared to G652D fiber, with a

[Contact Us](#)

G.657A1 Fiber Specifications Overview , PDF , Optical

The document describes the specifications of a self-supporting drop cable using G.657A1 fiber. It provides details on the cable cross-section, materials used,

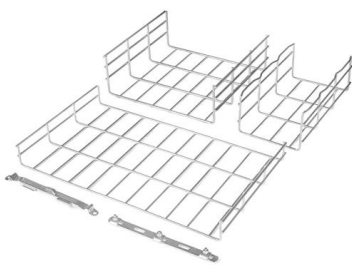
[Contact Us](#)



FTTH G657A1 SM LSZH Fiber Optic Drop Cable

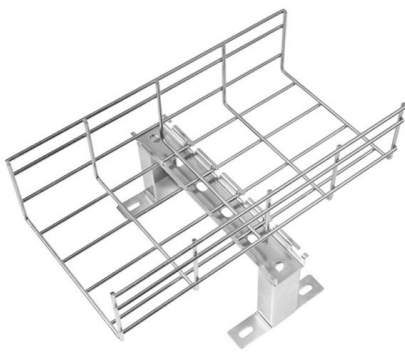
The 1 Core FTTH Self-support G657A1 SM LSZH Fiber Optic Drop Cable is designed for high-performance network transmission with its unique flexural optical fibers, providing greater bandwidth

[Contact Us](#)



G.657.A1 Single Mode Fiber Optical Fiber Purchase Specification

ast right-hand digit when considering the specification limits. This method is in accordance with the rounding method of ASTM Practice E29 (Standard Practice for using significant di.



G.652.D vs G.657.A1 vs G.657.A2: What's the

Explore the differences between G.652.D, G.657.A1, and G.657.A2 fiber optic cable specifications. Learn about their unique characteristics, bend

[Contact Us](#)

G657A1 The Fiber Optic Revolution!_NEWS_OPTICAL FIBER CABLE

G657A1 The Fiber Optic Revolution! Views:0
G657A1 is a specialized optical fiber designed to meet the demands of modern telecommunications and data transmission systems. With its unique



[Contact Us](#)



G.652D vs G.657A1 vs G.657A2: DO You Know the Difference?

Based on G.652, G.657A tweaks the refractive index profile so light stays better confined in the core. Even in tighter bends, it minimizes leakage. The series has two main subtypes: G.657A1

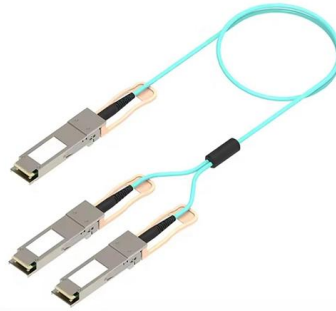
[Contact Us](#)



FIG8 Drop Cable G.657A1 Datasheet , PDF

The document details the specifications and characteristics of two types of self-supporting drop cables (DROP CABLE-1 and DROP CABLE-2) using G.657A1

[Contact Us](#)



G652D vs G657A1, G657A2, G657B2/B3 - Single-mode

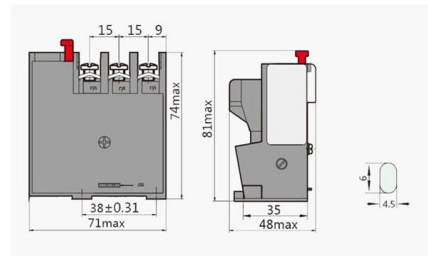
G.657.A1 or A1 fiber compatible cable is a reliable high- performance single-mode fiber. In addition, these fiber optic cables are backward compatible

[Contact Us](#)

G657A1 Fiber: Advanced Bend-Resistant Optical Fiber for Modern

Discover the benefits of G657A1 fiber featuring enhanced bend performance, seamless network compatibility, and superior long-term reliability for modern optical network installations.

[Contact Us](#)



Optical Fiber Single-Mode Fiber G.657A2 (208)

Datasheet: GD059734v7 SPECIFICATION FOR ENHANCED LOW MACROBENDING SENSITIVE, LOW WATER PEAK SINGLEMODE OPTICAL FIBER ITU-T RECOMMENDATION G.657A2,

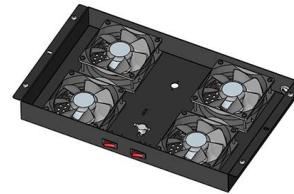
[Contact Us](#)



Reusing Single-mode Fiber? Here's What the G.652D

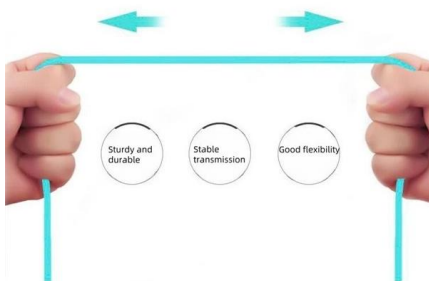
ITU-T G.657A1 and A2 are fully compliant with G.652D, and can offer enhanced, low-loss fiber; ITU-T G.657B2 and A3 are fully compatible with

[Contact Us](#)



More durable and robust

The outer layer is made of environmentally friendly PVC, which is soft and elastic. It can be stretched without damage, so you can use it with confidence.



G.652D vs G.657A1 vs G.657A2: The Complete Guide

This objective technical guide will break down the G.652D vs G.657A1 vs G.657A2 comparison, analyzing their physical structures, bend radii,

[Contact Us](#)

Choosing the Right Single-Mode Fiber: G.652D vs.

As fiber optic networks evolve to support 5G, FTTH, and data center interconnects, selecting the right single-mode fiber is critical. Three widely used

[Contact Us](#)



INSTALLATION METHOD



What is the Difference Between G657A1 and G657A2 Optical Fiber? A

In the rapidly evolving world of fiber optics, understanding the nuances between different fiber types is crucial for selecting the right solution for your network. Among the most discussed

[Contact Us](#)



Briticom Fibre Optic Cable G657a1

For cable use inside buildings, the fibre supports installation with small cable bending radii and compact organisers. Features & Benefits Applications u0007Low

[Contact Us](#)



FS Community

Hier sollte eine Beschreibung angezeigt werden, diese Seite lässt dies jedoch nicht zu.

[Contact Us](#)

G.657.A1 vs. G.657.A2 - Understanding the Difference

G.657.A1 is a dependable choice for conventional fiber installations. G.657.A2 delivers maximum flexibility and is the better option for dense, space-constrained

[Contact Us](#)



4 0GB 5 km G B 10 k m 0G 7 0 B HIGH 100THz G OS2 Fibre Optic Cable

briticom , briticom@briticom , +44 (0)1604 434 186

[Contact Us](#)



Introducing A1 Fiber Cables

A1 Fiber compliant cables are High-performance, dependable single-mode fibre cables. This optic cable has superior bending qualities and is

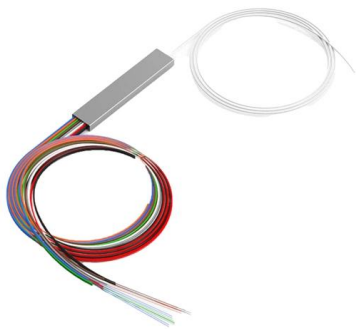
[Contact Us](#)



Understanding the Differences: G.652.D vs G.657.A1 vs

The types of fiber optic cables can seem complex, so it's crucial to choose the right type for your needs. Let's explore the key distinctions between

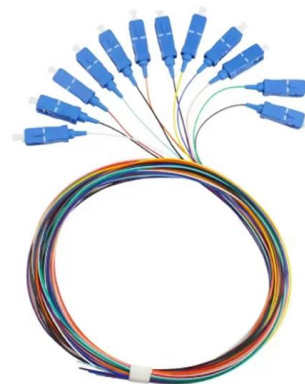
[Contact Us](#)



G.657 : Characteristics of a bending-loss insensitive single-mode

The file initially posted on 13 February 2017 was replaced on 11 May 2017 to update the History section. Superseded

[Contact Us](#)



G657 Fiber Splicing

Benefits:

- o ITU-T G.657 optical fibre cable offers flexible characteristics for easier deployment in streets, buildings and homes.
- o ITU-T G.657 optical fibre cable

[Contact Us](#)



Understanding the Differences: G.652.D vs G.657.A1 vs

Choosing between G.652.D, G.657.A1, and G.657.A2 fibers depends largely on your specific needs, particularly concerning the installation

[Contact Us](#)



Spec G657A1 Fibre Optic Cable

Home / Fibre Optic / Cable / Indoor Cable / Fibre Specs Spec G657A1 Fibre Optic Cable EasyBand® G657A1 bending insensitive single-mode fibre encompasses

[Contact Us](#)

DKAG71MA006BEAA Technical Data Sheet

Suitable Applications: For outdoor use in structured (data) wiring systems such as industrial backbone, campus backbone, building backbone (riser) and/or horizontal cabling. For outdoor use in networks

[Contact Us](#)

Various specifications optional



Fibre Optic Cable syBn G657A1 ine oe ire

Offering good resistance to additional losses due to low macro-bending in the 1625nm wavelength region. This not only supports L-band applications but also allows for easy installation without

[Contact Us](#)



Ficha_AR-1FTDSPE-xxF-G652D-G657A1-G555

SINGLE JACKET METALLIC ARMOR TOTALLY DRY
CABLE AR-1FTDSPE-xxF-G652D/G657-A1 /G655
OPTICAL FIBRE CABLE TECHNICAL

[Contact Us](#)



Bend Insensitive Fibers and Their Applications - G.657.A1 vs

Since they are compliant with the G.657 standards, they are perfect for installations in constrained spaces without any signal loss. These qualities of low attenuation and bend resistance mean they

[Contact Us](#)

Contact Us

For datasheets, pricing, or custom fiber access solutions, please visit:
<https://frindel.es>