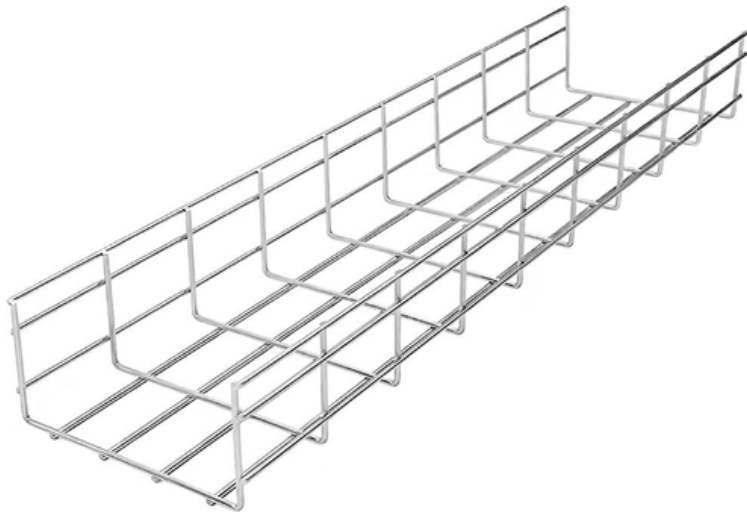


National Standard for Primary Distribution Boxes in Engineering





National Standard for Primary Distribution Boxes in Engineering



Arrangements of LV Utility Distribution Networks (1)

Introduction In European countries the standard 3-phase 4-wire distribution voltage level is 230/400 V. Many countries are currently converting

[Contact Us](#)



Engineering Recommendation G88

The Utilities Act 2000 introduced distribution as a separate activity requiring authorisation. As a consequence, any person can apply for a licence to operate existing or newly built distribution networks.

What Is a Distribution Box?

Synthetic rubber is an excellent choice. When made of synthetic rubber, distribution boxes can withstand regular use without damaging or

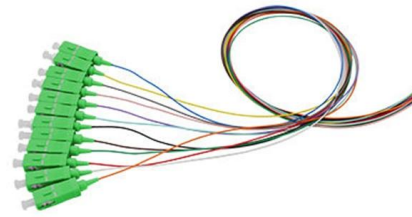
[Contact Us](#)



The Meaning and Function of Primary, Secondary, and Tertiary

Designed for local control with strict safety standards, such as "one device, one circuit breaker, one residual current device, and one box." May include both fixed and portable boxes, ensuring individual

[Contact Us](#)



Distribution Box: Types and Functions , Axis-Electricals

A distribution box ensures that electrical supply is distributed in the building, also known as a distribution board, panel board, breaker panel, or electric panel.

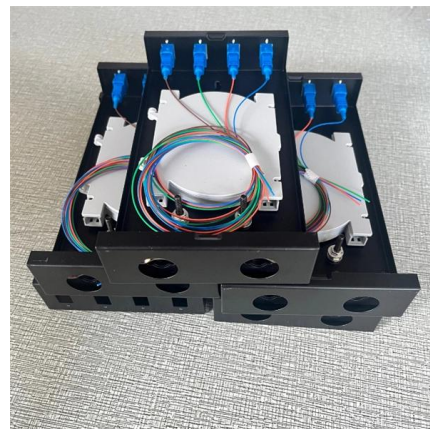
[Contact Us](#)



Power Distribution Equipment

The substation includes a primary main circuit breaker, sealed step-down transformer, secondary main circuit breaker, and distribution panelboard. They are typically built in a NEMA Type 3R enclosure,

[Contact Us](#)



Title

Further, this specification shall be the technical basis for any supply contract to be awarded. The purchaser intends awarding a supply and packaging, contract (Eskom National Contract, ENC) for

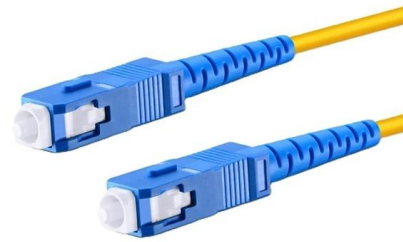
[Contact Us](#)

Electrical Power Distribution Systems



ASTM-E2018 Fink and Beaty, Standard Handbook for Electrical Engineers National Electrical Institute Wiring and Distribution Reference Volume 2 United States Steel Structural Design Guide, 2005

[Contact Us](#)



Complete Guide For Distribution Boxes Types

Distribution boxes, also known as electrical distribution boards or panels, are pivotal components in electrical systems, ensuring the safe and organized distribution of

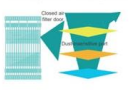
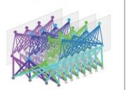

[Contact Us](#)



Distribution Boxes Types - The Complete Guide

The power distribution boxes deliver electricity from the main electrical main to other circuits. Several distribution boxes are designed for specific use in

[Contact Us](#)

All-Optical Backplane	Many-Degree WSS	Digital Optical Layer
 <ul style="list-style-type: none"> → Zero fiber connections at the optical layer, three layers of designed design, and stable running for 25 years → Innovative multi-level faultproof and optical port alignment technologies, ensuring high reliability 	 <ul style="list-style-type: none"> → 32 degrees, non-blocking flexible grooming → Connectionless, Oa-free, high reliability, 2x wavelength dropping efficiency compared with traditional boards 	 <ul style="list-style-type: none"> → Use of OFDM pilot tone and high-precision wavelength monitoring technologies to visualize the fiber quality, wavelength resources, and performance of the ODC system, achieving digital ODM

IEC Standard for Power Distribution Board Design and

Designing a power distribution board is not just about placing components inside a metal box. It requires a deep understanding of international

[Contact Us](#)

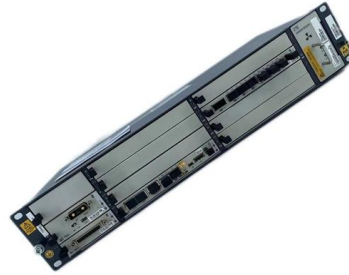




VuSpec Power Trans & Dist_2015_notice

IEEE Power Transmission and Distribution Standards Collection: VuSpec™ contains the latest standards, guides, and recommended practices of the Institute of Electrical and Electronics

[Contact Us](#)



What you need to know about the manufacturing process of distribution

Automation handles the repetitive, precision tasks, freeing technicians for value-added work. Final Thoughts: Complexity Behind the Simplicity Opening the door to a distribution box

[Contact Us](#)

Primary and secondary power distribution systems

Primary distribution systems Primary distribution systems consist of feeders that deliver power from distribution substations to distribution

[Contact Us](#)



UNDERGROUND ELECTRIC DISTRIBUTION CONSTRUCTION STANDARDS

City Ordinance 73-922-812 in making his determinations. The Engineer is granted authority, as a blanket permit, for the necessary removal of trees under the requirements of said ordinance. Each project file

[Contact Us](#)



Distribution Automation Handbook

The following section shortly introduces the primary equipment used in distribution networks. The equipment already introduced in Section 3.2 is excluded from this section.

[Contact Us](#)



Basics of power system design

Assuming that the design engineer has assembled the necessary load data, the following pages discuss some of the various types of electrical distribution systems that can be used.

[Contact Us](#)



Understanding Distribution Boxes: A Comprehensive Guide

A distribution box, also known as a power distribution box or electrical distribution box, is used to distribute electrical power safely to multiple

[Contact Us](#)



Power Distribution Box Essentials: Functions, Types

7) Considerations for choosing a power distribution box The context, security needs, and purpose all play a vital role in deciding a power distribution

[Contact Us](#)



Quality Control for Installation and Construction of Electrical Riser

1. Introduction Building electrical engineering is an indispensable component of modern construction projects. The installation of electrical riser lines and distribution boxes is of paramount importance to

[Contact Us](#)



Design requirements and standards for low voltage

Key Takeaways Always prioritize safety by following NEC and IEC standards for low voltage distribution boxes. Check voltage and current ratings to

[Contact Us](#)

Technical Specifications for Distribution Boxes and Switch Boxes

This document sets forth technical, installation and safety specifications for distribution boxes, switch boxes and cabinets. It stipulates requirements for enclosure materials, installation dimensions, the

[Contact Us](#)



Analysis on the Installation of Assembled Distribution

First, fix the distribution box or panel using an iron frame. Straighten the angle steel, measure the dimensions, mark the cutting lines based on the

[Contact Us](#)

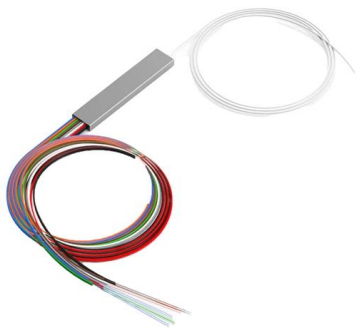
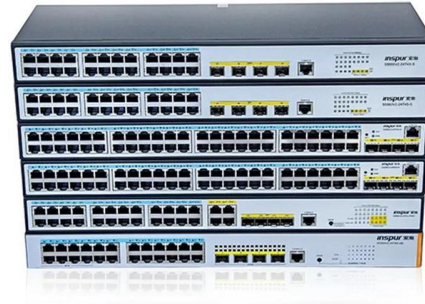




Size determination, installation method and wiring mode

The distribution box is the central hub of the home circuit and the general control of our daily power consumption. It is an indispensable electrical equipment. If there

[Contact Us](#)



The Meaning and Function of Primary, Secondary, and Tertiary

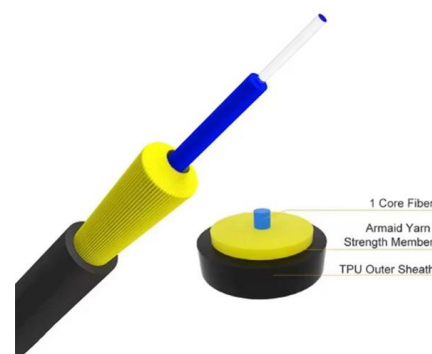
Follows the principle of "one machine, one switch, one RCD, one box, one lock," ensuring no single switch controls multiple devices. This explanation aims to clarify the roles and functions of

[Contact Us](#)

Cautions and Requirements for Installation of

When the distribution box is installed and constructed, some safety operation items have become the primary premise of the work. Therefore, there are certain

[Contact Us](#)



Contact Us

For datasheets, pricing, or custom fiber access solutions, please visit:
<https://frindel.es>