

# **National Standard Cable Tray Length**





## National Standard Cable Tray Length

---



### Enduro\_Specification\_Ladder Cable Tray\_04-30-21

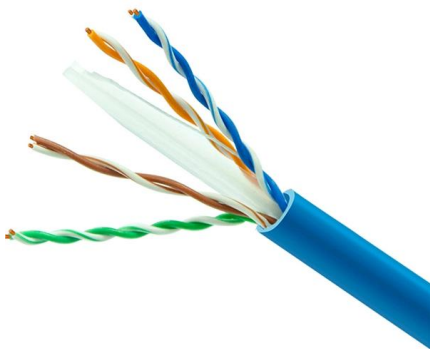
Connector plates shall be fiberglass and designed with sufficient strength so they may be installed between 0.2 and 0.3 of the length of the span from the support without derating the load carrying

[Contact Us](#)

### What are the contents of the national standard definition of cable tray

The standard lengths of straight line segments of cable tray with bending radius are generally 2m, 3m, 4m and 6m. The inside bending radius of cable tray is 50mm, 100mm, 150mm,

[Contact Us](#)



### 222 MANUFACTURING LTD

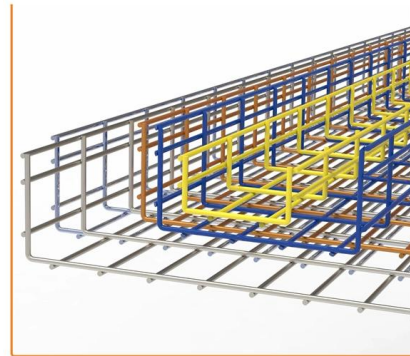
CODE cable tray and fittings are manufactured to CSA standard C22.2 Nn. 126.1-98 (latest version) from designs offering unprecedented attention to detail and ease of installation.

[Contact Us](#)

### GUIDE CABLE TRAYS TECHNICAL

Specifies requirements for metal cable trays and associated fittings designed for use in accordance with the rules of Canadian Electrical Code, Part I and the National Electrical Code®

[Contact Us](#)



### **Cable Tray Technical Guide A practical guide to product selection and**

Cable tray length is selected based on the load to be supported, the distance between the supports (also referred to as the span), and handling and installation constraints.

[Contact Us](#)

### **Best Practice Guide to Cable Ladder and Cable Tray Systems**

Introduction This publication is intended as a practical guide for the proper and safe\* installation of cable ladder systems, cable tray systems, channel support systems and associated supports.

[Contact Us](#)



### **Cable Tray Dimensions and Specifications as per NEC**

Many electrical systems employ cable trays. They route cables safely & efficiently. NEC defines minimum cable tray size & electrical installation

[Contact Us](#)





## Cable Tray Dimensions Guide: Standard Sizes, Tray

Explore standard sizes by tray type, understand width and depth limits, and see how to calculate and choose compliant cable tray sizes for real projects.

[Contact Us](#)



### What is the standard size of cable tray?

Cable trays are typically manufactured in standard lengths ranging from 1 meter (39 inches) to 6 meters (240 inches). Longer lengths may be

[Contact Us](#)

### Cooper B-Line

The standard lengths for cable trays are 10, 12, 20 and 24 feet (consult Cooper B-Line for the availability of nonstandard cable tray lengths). Selecting a cable tray length is based on several criteria.

[Contact Us](#)



### Cable Tray Size and Dimensions: How to Choose the

Learn how to calculate the perfect cable tray size and dimensions for your electrical project. This guide covers load capacity, fill ratios, and industry

[Contact Us](#)



## CABLE TRAY SYSTEMS GUIDE

Cable Tray Systems Guide HUBBELL Hubbell Wiring Device-Kellems and Hubbell Premise Wiring are divisions of Hubbell Incorporated, a U.S. headquartered manufacturer with over 130 years of

[Contact Us](#)



### Cable Tray Spacing Standards for Installation and Safety

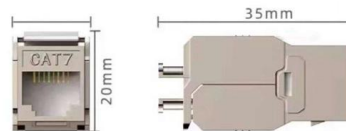
The Importance of Cable Tray Spacing in Electrical Infrastructure Cable tray spacing is a critical aspect of electrical infrastructure, influencing both

[Contact Us](#)

### Cable Tray Dimensions Guide: Standard Sizes, Tray

We will first explain standard cable tray dimensions used across the industry, then examine how dimensions vary by tray type, and finally show how to

[Contact Us](#)



### Cable Tray Size Chart and Selection Guide

Selecting the appropriate electrical cable tray dimensions is a critical decision that directly impacts the safety, efficiency, and longevity of any industrial or commercial electrical installation.

[Contact Us](#)



## Cable Tray SHIB NAL

The National Electrical Manufacturers Association (NEMA) also publishes three consensus standards that apply to the proper manufacture and installation of cable trays: ANSI/NEMA-VE 1-1998, Metal

[Contact Us](#)



### What is the standard size of cable tray?

What is the standard size of cable tray? The standard sizes of cable trays vary depending on the manufacturer, application requirements, and regional

[Contact Us](#)

### Cable Tray Technical Guide A practical guide to product selection and

A practical guide to product selection and installation This guide for engineers and installers has been developed by ABB as a practical reference regarding cable tray characteristics, installation, and

[Contact Us](#)



### Understanding Cable Trays Specifications: Length, Width, Height, and

Learn about the different parameters of cable trays including length, width, height, and thickness. Find out the common specifications and variations for cable tray installations.

[Contact Us](#)



The standard lengths for cable trays are 10, 12, 20 and 24 feet (consult B-Line for the availability of non standard cable tray lengths). Selecting a cable tray length is based on several criteria.

[Contact Us](#)



### **B-Line series Cable Tray Design Considerations**

The standard NEMA lengths for cable tray are 12, 20, 24 and 30-feet, although some manufacturers like Eaton offer cable tray in lengths up to 40 feet. Selecting a cable tray length is based on several

[Contact Us](#)

### **Tray Cable Size Chart: Choosing the Right Gauge**

Choosing the correct tray cable gauge is a balance of performance, safety and compliance. The tray cable size chart offers a solid starting point, but realworld conditions--like run

[Contact Us](#)



## **Contact Us**

---

For datasheets, pricing, or custom fiber access solutions, please visit:  
<https://frindel.es>