

Namibian Fiber Ethernet Switch QSFP





Namibian Fiber Ethernet Switch QSFP



Ethernet Network Data Switches

S7300-48TE4X2Q, 48-Port Multi-Gigabit Ethernet L3 Switch, 48x 100M/1000M/2.5GBASE-T RJ45 Ports, with 4x 10G SFP+ and 2x 40G QSFP+ Uplinks, Support Stacking, BGP

[Contact Us](#)

Comprehensive Guide to QSFP - MapYourTech

QSFP transceivers combine four independent electrical channels into a single compact form factor, enabling scalable bandwidth from 40 Gbps to 1.6



[Contact Us](#)

QSFP28 vs QSFP+ vs QSFP - Difference &

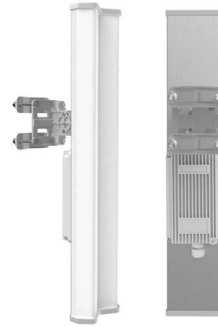
This document will focus on QSFP, QSFP+ vs QSFP28. Though they look very similar in physical appearance but the transmit data rates are quite

[Contact Us](#)



What is QSFP & QSFP28 Port? Everything You Need to

Simply put, the QSFP connector or port provides a physical house connector that allows the switches to build high-speed connectivity over the



AOC, DAC, Fiber Optic Transceivers , One-Stop Shop

Fiber Optical Cable OM3 Duplex OM5 Duplex OS2 Simplex MPO-MPO Extension QSA (40G/100G) SFP+/QSFP Extension Loopback SFP+/SFP28 Loopback Fiber

[Contact Us](#)



DynamiX QSATM QSFP+ to SFP+ Adapter

MAM1Q00A-QSA Mellanox DynamiX QSATM, QSFP+ to SFP+ adapter, enables a smooth cost-effective connection between a single lane transceiver/cable and a quad lane port. The QSA

[Contact Us](#)



FS Community

Hier sollte eine Beschreibung angezeigt werden, diese Seite lässt dies jedoch nicht zu.

[Contact Us](#)





2025 SFP vs QSFP Port on Switches: Key Differences, Benefits, Cases

Discover the differences between SFP and QSFP port on switch. Learn about speed, bandwidth, transmission distance to choose for your enterprise or data center.

[Contact Us](#)



QSFP-Switches verstehen: Ein umfassender Leitfaden

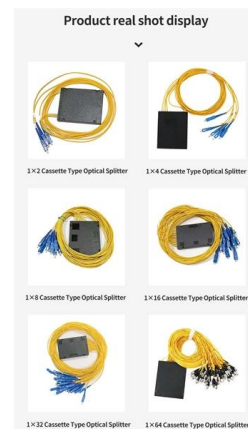
Entdecken Sie mit diesem umfassenden Leitfaden die neuesten QSFP-Switches für moderne Netzwerklösungen. Erfahren Sie mehr über

[Contact Us](#)

SFP vs. SFP+ vs. QSFP: Key Differences

Discover the world of SFP, SFP+, and QSFP transceiver modules and find out which one fits your networking requirements.

[Contact Us](#)



Understanding SFP and QSFP Ports on Switches

One such technology is the SFP and QSFP ports on switches. In this article, we will simplify these concepts, providing definitions and explaining the benefits and applications of the

[Contact Us](#)



SFP vs. QSFP: Differences, Use Cases, and How to Choose

Compare SFP vs. QSFP transceivers: key differences, speeds, distances, costs, and expert guidance to choose the right module for your network architecture.

[Contact Us](#)



QSFP+ Port Operations and Switch Fabric Mode

The quad small form-factor pluggable plus (QSFP+) is a transceiver module that offers high-density 40 Gigabit Ethernet connectivity options for datacenter and high-performance computing networks. The

[Contact Us](#)

QSFP28 Compatible Switches: Complete Guide by Vendor

Native QSFP28 Ports vs. Backward-Compatible Ports A QSFP28 switch is a networking platform that supports 100-Gigabit Ethernet through QSFP28 form-factor ports. Some switches offer

[Contact Us](#)



Understanding SFP Switches: The Essential Guide to Fiber and Ethernet

SFP switches incorporate Ethernet switches through SFP ports that expand connectivity possibilities. These ports accept modular transceiver plugs, which permit fiber and copper Ethernet

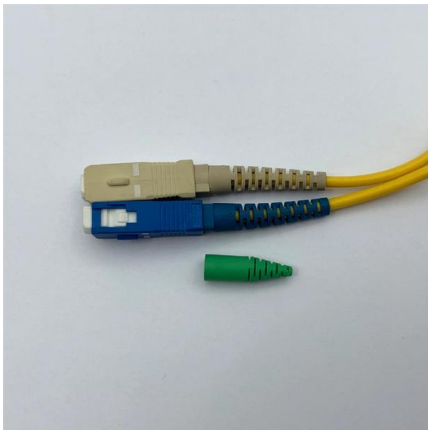
[Contact Us](#)



Comprehensive Guide to QSFP - MapYourTech

The technology supports multiple protocols including Ethernet, InfiniBand, Fibre Channel, and SONET/SDH, making it versatile across various

[Contact Us](#)



The Ultimate Guide to QSFP Cables

SFP vs. SFP+ vs. QSFP Key Differences Choosing the right high-speed interconnect is a critical step in any data center or telecom deployment.

[Contact Us](#)

Understanding QSFP Switches: A Comprehensive

Explore the latest QSFP switches for modern network solutions with this comprehensive guide. Learn about port configurations, features, and more.

[Contact Us](#)



Passive vs. Active: Selecting the Right 800G QSFP-DD Loopback

By isolating the port from external fiber variables, technicians can determine if signal degradation is occurring within the switch's internal SerDes or the external link. Interoperability and

[Contact Us](#)



Transceivers Explained: SFP vs SFP+ vs SFP28 vs QSFP+ vs QSFP28

These compact, hot-swappable modules plug into switches, routers, and servers to enable high-speed data transmission over fiber or copper.

Key Functions: Signal Conversion:

[Contact Us](#)



Understanding SFP, SFP+, QSFP and Beyond:

QSFP connectivity options come in several forms, each tailored for different distances, environments, and performance requirements. QSFP Direct Attach

[Contact Us](#)

What are the SFP and QSFP ports on the switch?

Data transmission: The working principle of the SFP optical module depends on its type, that is, whether it is an optical fiber or copper cable.

>>> To

[Contact Us](#)



Understanding the QSFP Cable: A Comprehensive

As a compact cable, QSFP works best with high-density applications, supporting 40G and even 100G Ethernet networks. The main objective of QSFP is to aid in

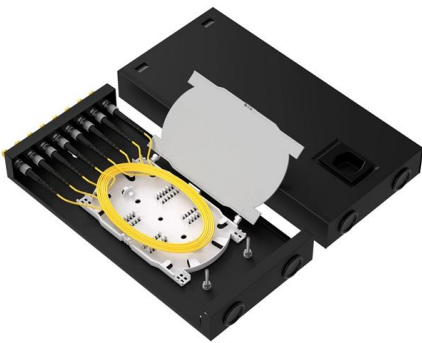
[Contact Us](#)



SFP vs QSFP: Key Differences Explained

SFP vs QSFP module differences explained. Learn about compatibility, speeds, and use cases for network setups.

[Contact Us](#)



How to Choose Between SFP, SFP+, SFP28 and QSFP Modules

SFP vs SFP+ vs SFP28 vs QSFP module selection guide. Compare speeds, form factors, compatibility, and choose the right module for ISP networks.

[Contact Us](#)

SFP vs QSFP: Key Differences and How to Choose for Your Network

Learn the differences in speed, lanes, density, cost, and use cases. Includes tables, FAQs, and guidance on choosing SFP or QSFP for servers, AI, and DCI.

[Contact Us](#)



Understanding QSFP Cables: A Comprehensive Guide to 40G

This guide will examine Quad Small Form-factor Pluggable (QSFP) cables specifically used for 40G direct attach. Compact and efficient, QSFPs allow switches to communicate seamlessly

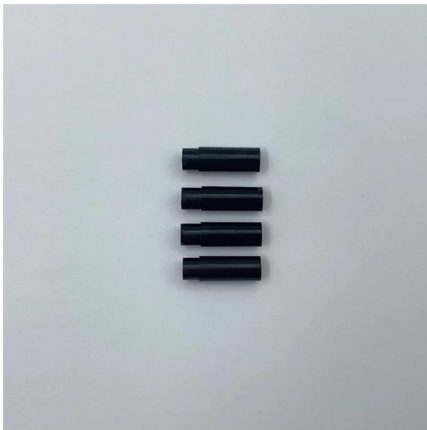
[Contact Us](#)



QSW-308S , Cost-effective entry-level 10GbE Switch

The QSW-308S is a 3-port 10G SFP+ and 8-port Gigabit Unmanaged Switch, allowing you to instantly upgrade to a hybrid high-speed network environment at

[Contact Us](#)



Blog

Ethernet vs InfiniBand: Choosing the Right NIC for AI Clusters Hardware HPC Blog Apr 28 2026

[Contact Us](#)

Contact Us

For datasheets, pricing, or custom fiber access solutions, please visit:
<https://frindel.es>