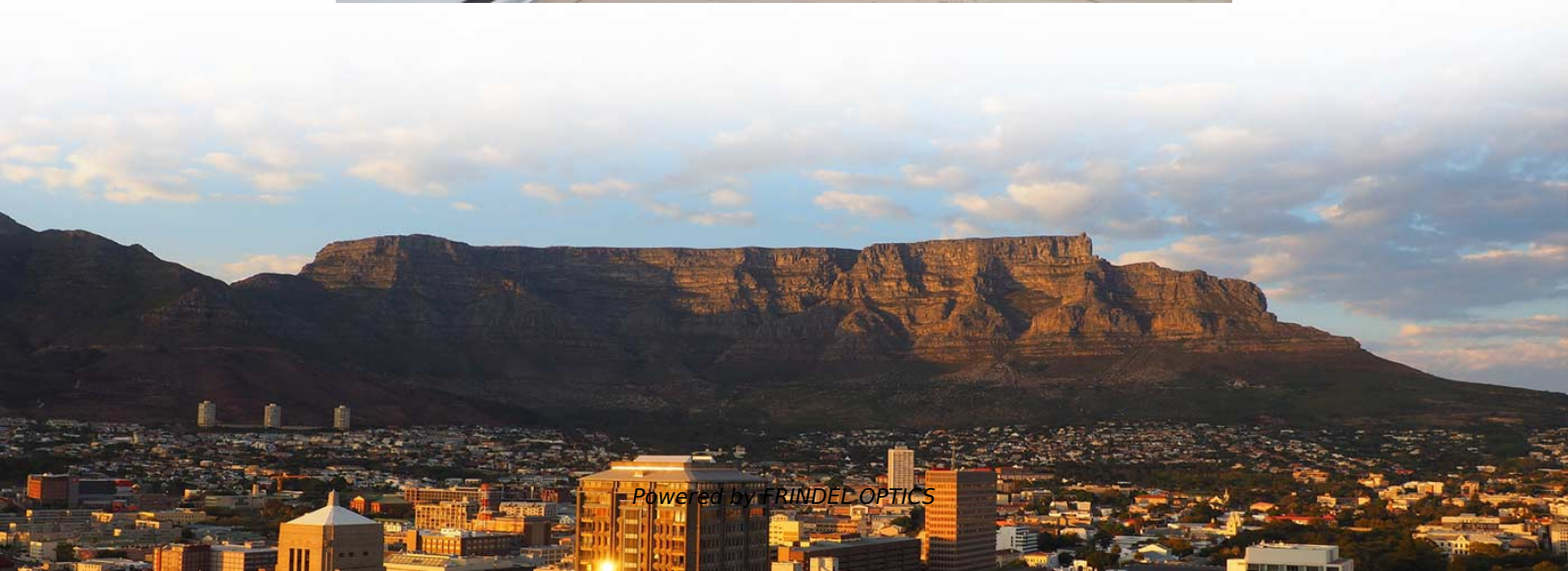


# **Must low-voltage wiring be run in cable trays**





## Overview

---

Multiconductor cables rated over 600 volts shall be separated from lower voltage cables by a separate cable tray or a solid fixed barrier. Medium voltage (type MV) and single conductor cables in sizes 1/0 and larger are permitted with some restrictions in industrial establishments where qualified persons service the installation. NEC Article 392 explains cable trays, their components, appropriate wiring methods for cable trays, and instances where they are and are not permitted for use. A rung spacing of 6 to 9 inches (150 to 230 mm) is preferable when the cable tray is used for instrumentation and control applications that require.



## Must low-voltage wiring be run in cable trays

---



### CTI Technical Bulletin

The types of wiring methods permitted in cable trays are listed in NEC section 318-3 along with the corresponding NEC article that describes the conditions of use for that particular type of cable.

[Contact Us](#)



### Explaining NEC Article 392 on Cable Trays

NEC Article 392 explains cable trays, their components, appropriate wiring methods for cable trays, and instances where they are and are not

[Contact Us](#)

### 2013 48 Autumn Wiring Matters

According to Rendell high-street multiples and stores are now using cable tray for light fittings, so it becomes a general-purpose highway carrying emergency lighting, fire alarm cables as

[Contact Us](#)



### Cable Tray Questions , Cable Tray Institute

Multiconductor cables rated over 600 volts shall be separated from lower voltage cables by a separate cable tray or a solid fixed barrier. Type MC cables can be mixed with lower voltage cables. See NEC

[Contact Us](#)



### **Cables Allowed in Tray**

Many end-users don't realize that 300 V cables and fiber cables are tested in the same fire test as large power cables and 600 V tray cable. Because of this finding, a cable with the proper fire rating is

[Contact Us](#)



### **The Ultimate Guide to Tray Cables: Types, Applications and**

When it comes to powering, automating and protecting facilities?from factories and petrochemical plants to data centers and high-rises?the right cable makes all the difference. Among

[Contact Us](#)



### **Cable Tray Technical Guide A practical guide to product selection and**

A practical guide to product selection and installation This guide for engineers and installers has been developed by ABB as a practical reference regarding cable tray characteristics, installation, and

[Contact Us](#)



## Types of Cable Typically Used in Cable Tray

The cable must be secured at intervals not exceeding six feet. TC cables are not permitted to be installed outside of a cable tray system or raceway with only two

[Contact Us](#)



## Equipment Grounding Conductors for Cable Tray Systems

Cable tray wiring systems have excellent safety and dependability records. These excellent records are the result of cable tray's unique features plus the proper

[Contact Us](#)

## Understanding NFPA 70 NEC Standards for Low

When working with low voltage cabling, contractors and electricians frequently encounter various compliance issues related to the National Electrical Code

[Contact Us](#)



## Cable Tray Fill Rules (NEC 392)

Medium-voltage cables (above 600V) must not share a tray with signal cables under any circumstances. In practice, most industrial installations

[Contact Us](#)

**NEC Article 392: Cable Tray Systems , PDF ,**



## Electrical

It provides rules for acceptable wiring methods that can be

[Contact Us](#)



### Huijue engineering specific Fiber optic

HJ GROUP offers a wide variety of product types for you to choose from.



### Annexure D

Cables and cable support systems for extra-low voltage and low voltage must be designed and constructed conforming to the General Electrical Requirements and this Annexure. Specific earthing

[Contact Us](#)

### Explaining NEC Article 392 on Cable Trays

Cables rated 600 volts or less can be installed together in the same cable tray without additional separation, provided they meet the NEC

[Contact Us](#)



### Cable Tray Questions , Cable Tray Institute

Question 5: We are using ladder type cable trays at many of our facilities for telecommunications wiring. Do you have any information available for recommended installation clearances for this type of cable

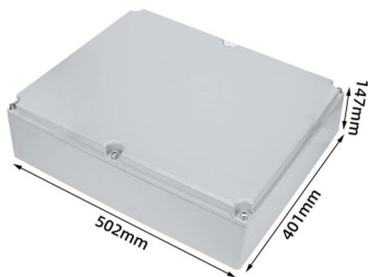
[Contact Us](#)



## Cables Allowed in Tray

CABLES ALLOWED IN TRAY Cable tray is one of the most common methods of supporting wire and cable. There are many different types of cable tray including basket, ladder and solid-bottom. Tray

[Contact Us](#)



## A Guide to Installing and Supporting Electrical Cable Trays

A professional guide to installing electrical cable tray systems per NEC Article 392. Covers support, securing cables, and fill calculations.

[Contact Us](#)

## Cable Tray Design, Layout, and Overall Wiring Planning

Learn about effective Cable Tray Design and Layout for electrical systems. Our guide covers planning, material choice, safety,

[Contact Us](#)



## Cable trays are structural components of a facility's electrical system

When properly planned, installed, and serviced, cable trays provide safe routing of power, low voltage control, data, and telecommunications wiring. Cables in these trays are easy to mark, find, and remove.

[Contact Us](#)



## Installation Of Cable In Cable Trays: NEC, Safety

Cable tray layout must take into consideration the design limits of the cable. To minimize damage and verify integrity after installation, follow the practices

[Contact Us](#)



## FAQ , Cable Tray Institute

Multiconductor cables rated over 600 volts shall be separated from lower voltage cables by a separate cable tray or a solid fixed barrier. Type MC cables can be mixed with lower voltage cables.

[Contact Us](#)

## 392.20 Cable and Conductor Installation.

Cable trays are not permitted to contain conductors rated over 600 volts. No separation is required between the 600 volt rated conductors and the 2000 volt

[Contact Us](#)



## Common Cable Tracing Problems and How to Avoid Them

Cable tracing problems are common in modern office networks and low-voltage installations. Signal interference, unlabeled cables, weak connections, and crowded wiring layouts

[Contact Us](#)



## Technical Guidelines for Cable Tray Installation and

Segregation of Power and Signal Cables: Power (high-voltage) and signal (low-voltage) cables should be routed separately, using dedicated trays to minimize

[Contact Us](#)



### **Cable Tray Technical Guide A practical guide to product selection and**

Cable tray is considered to be a system. It must provide continuous support for cables, and the electrical continuity of the cable tray system must be maintained.

[Contact Us](#)

## Contact Us

---

For datasheets, pricing, or custom fiber access solutions, please visit:  
<https://frindel.es>