

Modular computer room cold aisle principle

Length:33.5mm
Small-end inner diameter:4.0mm
Large-end inner diameter:6.0mm





Overview

Containment systems work by enclosing either the cold aisle or the hot aisle between rows of server racks. Beyond implementing basic measures such as sealing moisture out of the data center and improving air flow, aisle containment to prevent the mixing of hot and cold air stands out as a method that can dramatically reduce energy costs, minimize hot spots and improve the carbon footprint of data. Cold aisle containment (CAC) serves as a fundamental airflow management strategy in modern Data Centres, optimising cooling efficiency and enhancing overall performance. At Profile IT Solutions, we specialize in designing and implementing custom aisle containment solutions for data centers and server rooms.



Modular computer room cold aisle principle



Cold & Hot Aisle Containment For Data Center Efficiency

Cold Aisle Containment Cons The data hall becomes a hot environment, which can be uncomfortable for staff. More heat load in the room

[Contact Us](#)

How to Make the Right Choice? Comparison between the Enclosed Cold

After arranging the cold (hot) aisle in the computer room, the cold air volume (Q1) required by a single rack remains unchanged. Since the cold air sent out by the precision air

[Contact Us](#)



Hot Aisle Containment vs. Cold Aisle Containment:

Assuming a computer room is configured in such a way that either is an option, hot aisle containment may be seen as the better option because it has

[Contact Us](#)

Maximizing Data Center Efficiency: Technical Impacts of

2. What Is Hot Aisle/Cold Aisle Configuration?
This layout organizes server racks into alternating rows: Cold Aisles: Fronts of racks face each other.



Why should the computer room design hot and cold aisles?

The design of cold and hot aisle isolation in the equipment room is to install tempered glass on the upper part of the cabinet, lengthen the arrangement length

[Contact Us](#)



Cold Aisle Containment & Hot Aisle Containment

Executive Summary of Aisle Containment This article examines cold aisle containment and hot aisle containment (also known as cold or hot air containment) from a neutral perspective. Cross-Guard, as

[Contact Us](#)



The cold aisle containment advantage

HP partnered with Rittal Corporation and Liebert Corporation to establish a test environment for measuring and validating the benefits of cold aisle containment and validating the constraints of

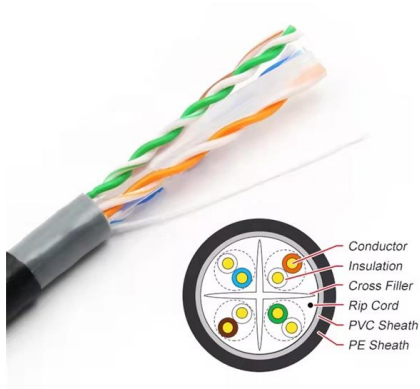
[Contact Us](#)



Is Modular Aisle Containment The Way Forward?

AisleLok® Modular Containment (AMC) is the industry's first out-of-the-box modular aisle containment solution that is easy to deploy and can be installed in minutes,

[Contact Us](#)



Hot Aisle Containment: The Coolest Guide for

Hot aisle containment data centers are engineered to optimize cooling efficiency and minimize energy use by effectively

[Contact Us](#)

Modular Data Center with Cold Aisle Containment & Dual Row Cabinets

Dual Row Cabinets Modular Data Center featuring 2.0mm Cold Rolled Steel, 1100kg Static Payload, and Hot Air Containment for efficient cooling and high-density data management.

[Contact Us](#)



Hot vs Cold Aisle Containment: 40% Cooling Savings

Discover how hot and cold aisle containment revolutionizes cooling efficiency, cuts energy costs by up to 40%, and extends equipment lifespan. |

[Contact Us](#)



A Guide to Hot and Cold Aisle Containment for Optimizing Server Room

Training and Awareness The hot and cold aisle strategy is a proven method for improving cooling efficiency and reducing energy consumption in data centers. By carefully planning the layout of

[Contact Us](#)



Impact of Hot and Cold Aisle Containment on Data Center

Both hot-aisle and cold-aisle containment provide significant energy savings over traditional uncontained configurations. This paper analyzes and quantifies the energy consumption of both containment

[Contact Us](#)

Hot/Cold Aisle Containment , AZE

Cool Shield Aisle containment solutions reduces server row temperatures in active data centers. Contact us info@azesystems to build your data center with our

[Contact Us](#)



(PDF) The Data Center as a Computer: Designing

PDF , On Jan 1, 2026, Luiz André Barroso and others published The Data Center as a Computer: Designing Warehouse-Scale Machines , Find, read and cite all the

[Contact Us](#)



Hot/Cold Aisle Containment , AZE

Aisle containment is a cooling system that completely separates the cold supply airflow from the hot equipment exhaust air. This ultimately creates an even and

[Contact Us](#)



Hot Aisle vs Cold Aisle Containment Explained (Data Center Cooling)

In this guide, we'll break down how hot aisle and cold aisle configurations work, what containment systems do, and why airflow management is critical in today's high-density data centers.

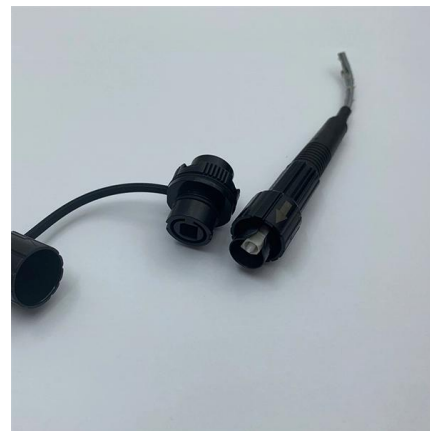
[Contact Us](#)



Hot and Cold Aisle Containment Systems: How They

Hot aisle containment (HAC) and cold aisle containment (CAC) are the most efficient ways of preventing your servers from overheating and these

[Contact Us](#)



Data Center Hot and Cold Aisle: A Quick Guide

A data center hot and cold aisle is a strategic layout for organizing server racks to manage airflow and enhance cooling

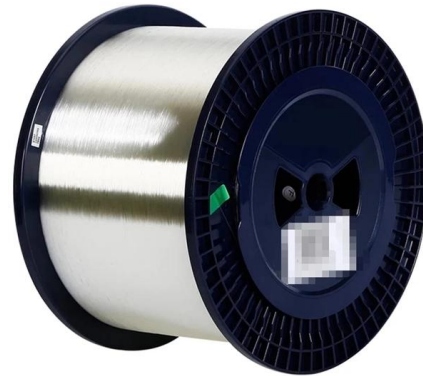
[Contact Us](#)



Server Room Containment Systems , Hot & Cold Dial Containment in

Whether you need cold aisle containment, hot aisle containment, or a hybrid approach, our expert team ensures maximum thermal efficiency and reduced PUE (Power Usage Effectiveness). In modern

[Contact Us](#)



Data Center Cooling , Hot-Aisle/Cold-Aisle Systems

The goal of hot-aisle/cold-aisle systems is to move maximum heat away from the equipment using the minimum amount of energy. This arrangement optimizes air

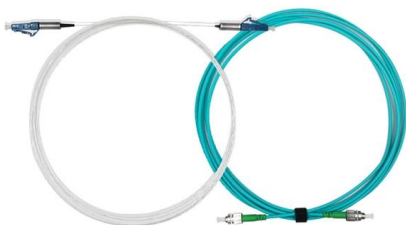
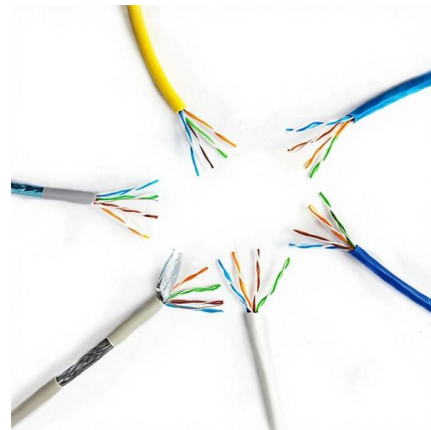
[Contact Us](#)



Hot Aisle / Cold Aisle Cooling Explained

The hot aisle / cold aisle configuration conserves energy and lowers cooling costs by managing air flow. This is common practice in every data centre and may seem obvious to most

[Contact Us](#)



Hot Aisle Containment (HAC) for Data Centers Explained

Hot Aisle Containment Explained Hot aisle containment (HAC) is a method for improving the efficiency of a data center's cooling system. The

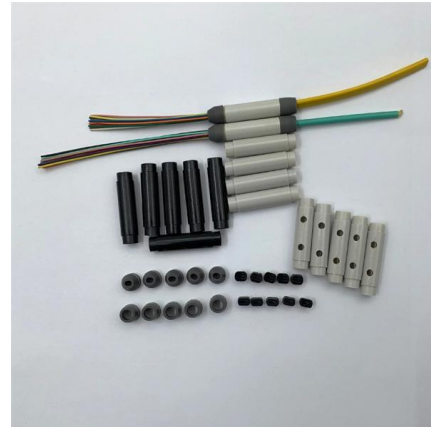
[Contact Us](#)

Move to a Hot Aisle/Cold Aisle Layout



A Time-tested Technique The hot aisle /cold aisle data center layout was originated by IBM in 1992 and it is one of the oldest ways to save energy in the data center.

[Contact Us](#)



FOCUSED COOLING USING COLD AISLE CONTAINMENT

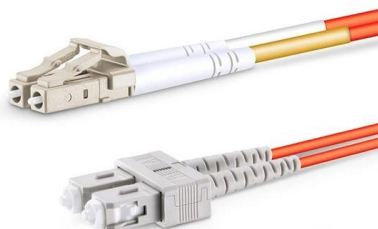
As an addition to a conventional precision cooling system, cold aisle containment consistently separates cold and warm areas without requiring structural changes to the data center.

[Contact Us](#)

Explore hot and cold aisle containment for your data center

Hot and cold aisle containment can help you maintain the best air flow, temperature and humidity in the data center to keep servers running efficiently.

[Contact Us](#)



Hot and Cold Aisle Containment Solutions Ardmac

Get expert hot and cold aisle containment solutions for your data centres with Ardmac. Our tailored approach maximises efficiency.

[Contact Us](#)



Aisle Containment Systems Physical Containment Systems

extension of the hot aisle/cold aisle concept of data center design. Hot aisle/cold aisle configuration is a best practice solution that separates hot and cold air streams. This method raises the temperature of

[Contact Us](#)



Aisle Containment Systems for Hot & Cold Aisle Solutions

Cool Shield Aisle containment solutions reduces server row temperatures in active data centers. Learn more about the benefits of hot and cold containment.

[Contact Us](#)

Contact Us

For datasheets, pricing, or custom fiber access solutions, please visit:
<https://frindel.es>