

Mobile Backbone Network Core Switches





Overview

Includes dual power supplies, hot-swappable modules, link aggregation (LAG), and support for HSRP/VRRP. Modular chassis or stackable designs make it easy to scale as your network grows. Engineered to aggregate massive volumes of data from distribution switches, it provides ultra-low latency and maximum throughput to ensure uninterrupted routing and packet. A backbone switch, also known as a core switch, is a high-performance network switch engineered to interconnect different subnets, access layer switches, or distribution layer devices within a network. This article walks through the essential components of a mobile network, from the foundational hardware to the advanced systems that make global connectivity possible. Base Transceiver Station (BTS): The Foundation The BTS is where your phone first connects to the mobile network. Quality of Service (QoS): Quality of Service (QoS) is essential in core switches.



Mobile Backbone Network Core Switches



Network Switches: The Backbone Of Modern Connectivity

Core Switch - The High-Performance Backbone A core switch is the foundation of a network, interconnecting distribution switches and ensuring fast,

[Contact Us](#)

What Is a Core Switch? Network Backbone Architecture Guide

Discover what a core switch does in a 3-tier network model. Learn about ASIC routing, collapsed core vs dedicated core topologies, and SMB sizing guides.

[Contact Us](#)



What is a mobile core network?

A mobile core network is a central part of the mobile network that deals with functions like subscriber profile info, location, authentication and switching.

[Contact Us](#)

What is a backbone network?

A backbone network is the high capacity core that connects different regions, data centres and ISPs to the internet and cloud services. A distribution

[Contact Us](#)



Mobile-packet-backbone-network-white-paper.pdf

The document explains the mobile packet backbone network, its architecture, and functionality in detail.

[Contact Us](#)

What Is a Backbone Switch? Everything You Need to

What is a backbone switch? Discover the role of a backbone switch in modern networks, including key features, deployment locations, and use cases.

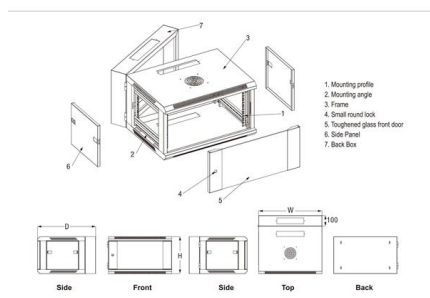
[Contact Us](#)



Key Mobile Network Equipment and Functions:

These key mobile network equipment and functions form the backbone of mobile infrastructure, supporting billions of users worldwide. The basic components of a

[Contact Us](#)





Understanding the Mobile Network Infrastructure: From

This article walks through the essential components of a mobile network, from the foundational hardware to the advanced systems that make

[Contact Us](#)



Core Switches: The Backbone of High-Speed Data Networks

Core switches form the backbone of large-scale networks, handling massive amounts of data traffic with high speed and reliability. Whether in a data center, enterprise, or ISP environment, core switches

[Contact Us](#)

Core Switch vs. Distribution Switch vs. Access Switch

Comprehensive guide to Core, Distribution, and Access Switches. Roles in the network and important parameters explained.

[Contact Us](#)



FS Community

Hier sollte eine Beschreibung angezeigt werden, diese Seite lässt dies jedoch nicht zu.

[Contact Us](#)



Understanding the Mobile Network Infrastructure: From

In today's hyper-connected world, mobile networks are the backbone of communication. Whether it's a phone call, a video stream, or a smart device

[Contact Us](#)



SP_Brochure_1_012 dd

A Cisco IP/MPLS backbone can preserve your investments by transporting traffic from various access networks in a mobile network infrastructure and by permitting the use of MPLS-enabled ATM

[Contact Us](#)



Cellular Network: The Backbone of Mobile Communication

Comparing Cellular Networks with Other Communication Technologies While cellular networks have become the backbone of modern mobile connectivity, they are not the only

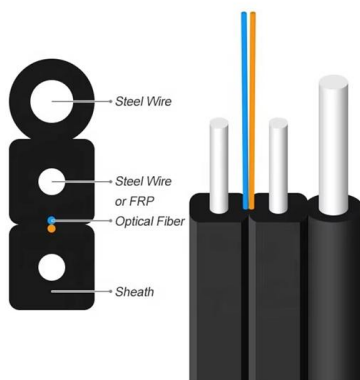
[Contact Us](#)



What Is a Core Switch?

Explore what a core switch does, why it's essential for enterprise networks, and how to choose the right model. Includes real-world applications and Cisco/Huawei/Aruba model comparison.

[Contact Us](#)





Core Switches: Key to Reliable, Scalable Enterprise

Discover the essential role of core switches in modern networks. Explore our comprehensive guide to enhance your network's performance and

[Contact Us](#)



Understanding Telecom Network Architecture: Core,

Explore how telecom networks operate across core, transport, and access layers, forming the backbone of global mobile and data communication.

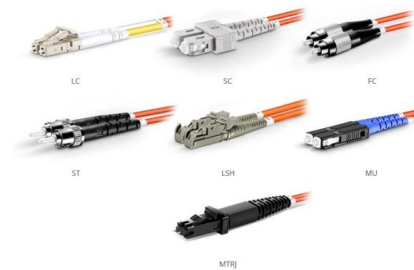
[Contact Us](#)



MPBN: Mobile Packet Backbone Network:-The Emerging and Secure Technology

This comprehensive IP infrastructure connects the core network, service network, radio access networks and external networks, such as the internet and corporate sites. MPBN is also fully

[Contact Us](#)



OM1 Fiber Patch Cable Family

What Is a Backbone Switch? Everything You Need to

What Is a Backbone Switch? A backbone switch, also known as a core switch, is a high-performance network switch engineered to interconnect

[Contact Us](#)

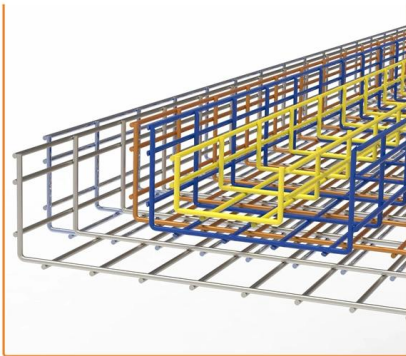




Mobile Packet Backbone Network (MPBN)

Mobile Packet Backbone Network (MPBN) Course
Outline Technology Overview: Access Networks
Roadmap to 4G GSM/GPRS/EDGE UMTS 3GPP
releases

[Contact Us](#)



Core Network: The Backbone of Mobile Communications

The Core Network is the invisible backbone of mobile connectivity, evolving from simple circuit-switched nodes in 2G to cloud-native microservices in 5G. It

[Contact Us](#)

What is a core network? How does the core network work?

Uncover secrets of the core network. Learn its role in IT, functions, types & how they ensure high-speed, reliable data communication for enterprises.

[Contact Us](#)



Network Switches: The Backbone of Modern

A core switch is the foundation of a network, interconnecting distribution switches and ensuring fast, reliable data transmission across the

[Contact Us](#)

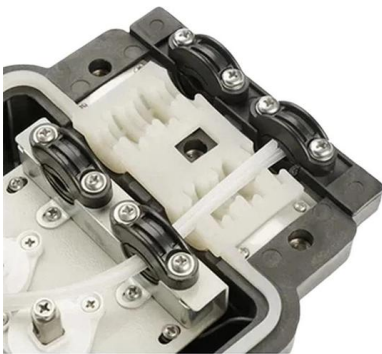




What Is a Core Switch in Networking?

What Is a Core Switch in Networking?
Understanding the Backbone of Your Network A core switch in networking serves as the high-capacity

[Contact Us](#)



Features and Applications of Core Switches

A Core Switch is a critical device that operates in the backbone portion of a network, primarily used for high-speed data switching.

[Contact Us](#)

Contact Us

For datasheets, pricing, or custom fiber access solutions, please visit:
<https://frindel.es>