

Metropolitan Area Network Optical Core Router SFP





Overview

Supporting 2km transmission over single-mode fiber at 1310nm wavelength, this 2. Telcordia compliant with LC/UPC connectors, optimized for metro OC-48 and STM-16 applications. With the rapid rise of technologies such as 5G, IoT, and edge computing, metro networks are no. ZR stands for "Zero- distance Reach" in many vendor documents, though the term is used interchangeably with extended reach SFPs. High-precision synchronization technology, industry-leading security, and high availability features enhance QoE, while extensive OAM, built-in advanced SLA management, and zero touch deployment capabilities the access network. The concept of a Metropolitan Area Network (MAN) has long been a crucial part of the modern communication infrastructure, bridging the gap between Local Area Networks (LANs) and Wide Area Networks (WANs). Published: 2026 | Category: Network Hardware Knowledge Base / Optical Communications Core Keywords: SFP Module, SFP Transceiver, Small Form Factor Pluggable, What is SFP, SFP vs SFP+ Read Time: Approx. 25 Minutes Even in the era of Wi-Fi 7 and 5G, Optical Transceivers remain the backbone of the.



Metropolitan Area Network Optical Core Router SFP



Metro Metro

Metro Metro Railway Cisco IP+Optical solutions for metropolitan-area networks meet a variety of application and infrastructure requirements. -

[Contact Us](#)

Top Optical Modules for POTN Deployment: SFP, QSFP, and OSFP

In the context of POTN (Packet Optical Transport Network) and advanced PON architectures, three form factors-- SFP, QSFP, and OSFP --define the standards that connect

[Contact Us](#)



What is single mode sfp module?

What is a Single Mode SFP Module? An SFP module is a compact, hot-swappable transceiver used in networking hardware like switches, routers, and media converters. It allows the physical layer of a

[Contact Us](#)



What Is an SFP Module? (Comprehensive Guide)

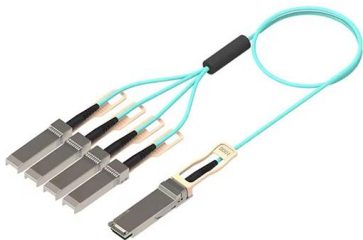
Single-mode optical modules: Matched with single-mode fibers, with a core diameter of 9um, excellent transmission performance, supporting long-distance



12 10G SFP+ Fiber Ports + 8 10/100/1000M Copper RJ45 Ports

Its flexible networking capability ensures the stability of the network and the balance of the load link. With the modular design, it provides 12 10G SFP+ optical ports, 8 10/100/1000M RJ45 electrical

[Contact Us](#)



(PDF) Metropolitan area optical networks

This paper discusses the evolution and requirements of metropolitan area networks (MANs), particularly focusing on the transition from traditional SONET architectures to modern transparent wavelength

[Contact Us](#)



SFP 40km Solutions for Metro Area Network Expansion

SFP 40km modules are purpose-built to deliver long-distance optical transmission over single-mode fiber, extending network connectivity between distant metro sites without requiring signal repeaters.

[Contact Us](#)

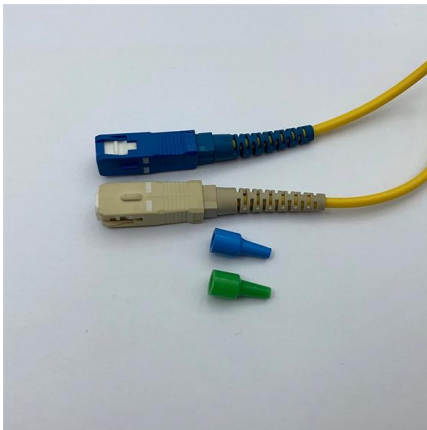




**Verified Supplier 10G Huawei SFP Factory
Outlet Price , Alibaba**

Shop high-quality 10G Huawei SFP transceivers for reliable fiber optic communication. Compatible with various networking devices for seamless connectivity.

[Contact Us](#)



Metro Ethernet

Metro Ethernet A metropolitan-area Ethernet system A metropolitan-area Ethernet, Ethernet MAN, carrier Ethernet or metro Ethernet network is a metropolitan area network (MAN) that is based on

[Contact Us](#)

**Metropolitan optical networks: A survey on
single-layer architectures**

This work presents a comprehensive survey of the new proposed single-layer (purely optical) architectures for metropolitan optical networks. First, we discuss the structural organization of

[Contact Us](#)



**OC-48/STM-16 SFP 2km SMF , Metro ,
EDGE OPTIC**

Our OC-48/STM-16 SFP 2km transceiver delivers reliable high-speed SONET/SDH connectivity for metro networks. Supporting 2km transmission over single-mode

[Contact Us](#)



Cisco Routed Optical Networking

Routed Optical Networking is an architecture that delivers improved network efficiencies and operational simplicity. It does this by converging IP and optical

[Contact Us](#)



Metro and core network solutions

Together with the POLATIS® optical circuit switching technology, our portfolio supports you in establishing redundant, efficient, and software-driven zero-touch connectivity that minimises

[Contact Us](#)

Arista XVR-10084-20 25GBASE-LR SFP Up to 10 km Over Refurbished

Single-mode optical infrastructure is widely used across metropolitan area networks, enterprise campuses, telecom backbones, cloud facilities, and carrier interconnection environments.

[Contact Us](#)

LoRawan outdoor base station

- * Industrial Internet gateway
- * Compatible with LoRaWAN network,
- * ClassA/B/C mode
- * Support 8/16 channel
- * Supports PoE power
- * supply and backup battery power supply
- * 10KV lightning protection



Can 100m sfp be used in a metropolitan area network

In conclusion, 100m SFPs can indeed be used in a Metropolitan Area Network, but their use is limited to specific scenarios. Their cost - effectiveness, compatibility,

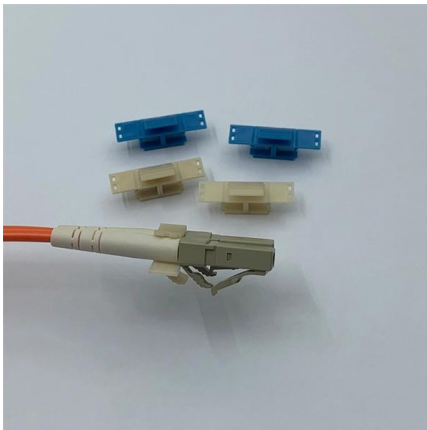
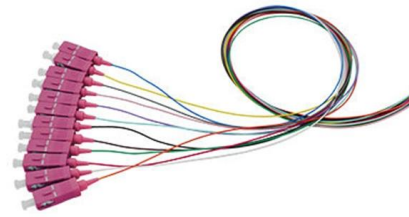
[Contact Us](#)



1 Metropolitan Optical Networks: A Survey on New Architectures and

Metropolitan optical networks are undergoing major transformations to continue being able to provide services that meet the requirements of the applications of the future. The arrival of the 5G will expand

[Contact Us](#)



SFP ZR Modules for Metro and WAN Networks , High-Speed Backbone

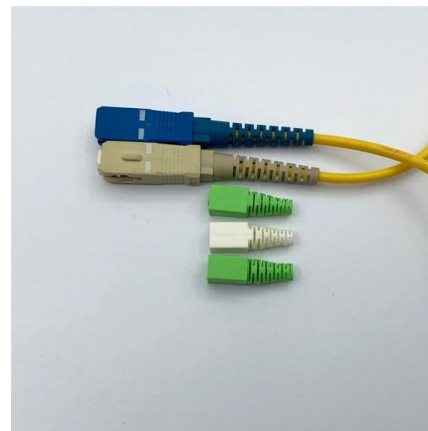
This article dives into what SFP ZR modules are, why they matter for metro and WAN networks, key specifications to consider, and practical deployment tips for network engineers and IT

[Contact Us](#)

Product Description

ACX Series Product Family The ACX Series Universal Metro Routers family includes multiple models, all targeted at different applications.

[Contact Us](#)



Ordering information

NO.	1	2	3	4
Model	P24H	P18H	P12H	P10H
Product name	Patch Panel	Patch Panel	Patch Panel	Patch Panel
Illustration				
HU	1	2	3	4
Maximum number of cores	96	144	288	384
Product size (excluding module and adapters)	482.4*258.7*43.3mm	482.4*258.7*68.1mm	482.4*258.7*113.5mm	482.4*258.7*173mm
Standard color code	RAL9005	RAL9005	RAL9005	RAL9005

What Is an SFP Module? (Comprehensive Guide

This article will take you to explore in depth "what is an SFP module", analyze its technical foundation, sort out various classifications, compare high-speed and low

[Contact Us](#)



Arista SFP-25G-LR 25GBASE-LR SFP28 Optical 1310nm 10KM

The Arista SFP-25G-LR module supports transmission distances up to 10 kilometers, making it ideal for metropolitan area networks, enterprise campus deployments, service provider infrastructures, and



[Contact Us](#)



(PDF) Metropolitan area optical networks

Presented the requirements, architectures, and performance of optical MANs. We outlined our considerations about the evolution of metro area

[Contact Us](#)

Metropolitan Networks , Springer Nature Link

Metropolitan area networks, or metropolitan area network (MAN) s are at the confluence of business and home users& #8212;connecting enterprises to core networks and residential users to the rest of the

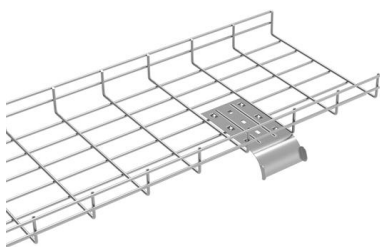
[Contact Us](#)



What is sfp optical transceiver?

What is an SFP Optical Transceiver? An SFP optical transceiver is a modular device that plugs into a network switch, router, or other networking equipment to provide connectivity to fiber optic or copper

[Contact Us](#)





How to Choose the Right 10G SFP+ Module: SR, LR, or

The SFP-10G-LR optical module is suitable for long-distance communications up to 10 kilometers, such as interconnecting each building in a

[Contact Us](#)



Application Of 10G SFP+ CWDM Wavelength Division

These two 10G CWDM optical modules are both hot-swappable SFP+ package, dual-fiber LC interface, optional working wavelength is from

[Contact Us](#)

Ultimate Guide to 1G SFP Module Selection

Learn how to choose the right 1G SFP module for your network. Our guide covers compatibility, distance, fiber type, cost, and vendor selection for optimal performance.

[Contact Us](#)



The Ultimate Guide to SFP Modules (2026): Types,

Confused by SFP vs SFP+? Read the definitive 2026 guide on SFP modules. We explain Single Mode vs Multimode, DDM diagnostics, and how to choose the right

[Contact Us](#)



Arista SFP-1G-LX 1GB BASE-LX 1310nm SMF SFP New

Modern networking environments often contain large numbers of switches, routers, and optical modules operating simultaneously within compact rack configurations. The Arista SFP-1G-LX transceiver is

[Contact Us](#)



Optical Network Design and Transport

Optical Network Design and Transport Best practices for optical network design Fiber-optic technology -- not long ago used only in long-haul networks -- has become the transmission medium of choice not

[Contact Us](#)

Cisco Agile Metro Solution Guide

The core of the solution is a smart SFP acting as a single port OLT, the PON controller software managing the OLT SFPs on a device, and the PON

[Contact Us](#)



Contact Us

For datasheets, pricing, or custom fiber access solutions, please visit:
<https://frindel.es>