

Methods for Relay Protection of Elevator Systems





Overview

Current Sensing Relays protect motors from over- or under-current conditions. PMDs with Communication provide remote monitoring of operation for proactive maintenance. There are several types of relays commonly used in elevators: Intermediate Relay: Widely used in elevator circuits for signal amplification, transmission, and logic conversion. IEEE/IAS/I&CPSD Protection & Coordination WG Chair Jacobs Canada, Calgary, AB rasheek.com IEEE Southern Alberta Section PES/IAS Joint Chapter Technical Seminar - November 2016 Protective Relays - Technical Seminar Nov 2016 - Copyright: IEEE 2 Abstract: Protective relays and devices. The safety relay circuit forms UCMs logical backbone, evolving from a simple start-stop relay to a redundant architecture using relays A and B and a monitoring relay C that detects welded or stuck contacts before the next start. This handbook covers the code of practice in protection circuitry including standard lead and device numbers, mode of connections at terminal strips, colour codes in multicore cables, dos and donts in execution.



Methods for Relay Protection of Elevator Systems



Design of Elevator Control System Based on PLC

Keywords: Elevator control system; PLC technology; Performance; Internet of Things
Abstract: With the acceleration of urbanization, the utilization rate of elevators in buildings has

[Contact Us](#)

CIT Relays and Switches for the Elevators, Escalators, and Other

Modern elevators, escalators, and people-moving equipment increasingly use sophisticated control systems that integrate relays and switches with microcontrollers, programmable logic controllers

[Contact Us](#)



Slide 1

Whether a relay system, a solid state system, a PLC, or some combination of these, the elevator controller performs the following functions, many of them simultaneously: Advance.

[Contact Us](#)



Exploring Safety Electronics in Modern Elevator Systems

This white paper explores how safety relays, terminal blocks and E-Stop mechanisms work together to create comprehensive safety systems that protect people while enabling efficient elevator operation.



Types and Common Models of Elevator Relays

HHC68A series relays are often applied in elevator door operator control and safety circuits. Brands such as Omron, Schneider, and Finder relays

[Contact Us](#)

Elevator VFD Braking Resistor Protection: Code

Modern elevator drives require braking resistor protection as their core safety system to function properly. It allows excess energy to be burned off during

[Contact Us](#)



Surge Protection Device For Elevators, Fault Risk

A surge protection device for elevators protects control electronics and drive systems from transient overvoltage events that cause unexplained shutdowns, recurring

[Contact Us](#)



Review of Fault Modes, Diagnosis and Prediction Methods for Elevator Systems

Knowledge modeling methods for elevator fault diagnosis and prediction typically include expert systems, fault trees, and knowledge graphs. In the process of fault diagnosis and prediction, data

[Contact Us](#)



LoRawan outdoor base station

- * Industrial Internet gateway
- * Compatible with LoRaWAN network,
- * ClassA/B/C mode
- * Support 8/16 channel
- * Supports PoE power
- * supply and backup battery power supply
- * 10KV lightning protection



Types of Electrical Protection Relays or Protective Relays

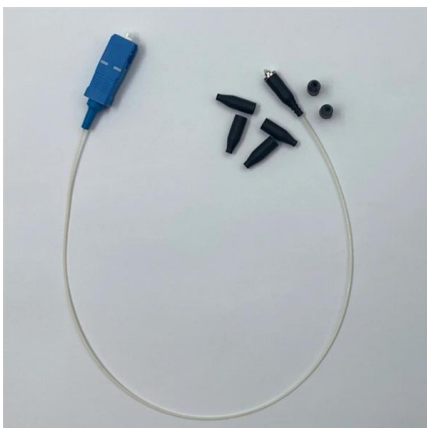
Operating Principles: Protective relays operate by detecting abnormal signals, with specific pickup and reset levels to start or stop their action.

[Contact Us](#)

High-Rise Safety Systems

Safety systems in a modern high-rise elevator
The Greek mathematician Archimedes is generally credited with creating the first elevator-like device in the third century

[Contact Us](#)



Elevators & Lifts

Relays monitor and protect motors from failure due to current fluctuations and voltage faults. Many elevator manufacturers now provide remote monitoring of

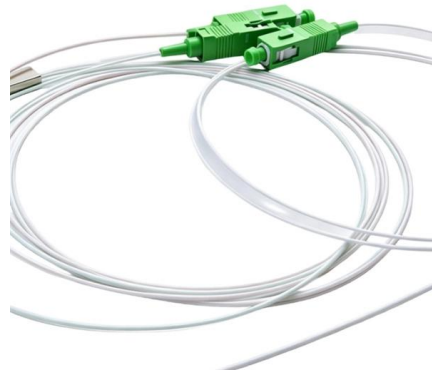
[Contact Us](#)



Elevator three-phase AC relay -ABJ1-12X

The ABJ1-12X Three-Phase AC Relay is a high-quality device designed to provide reliable protection and control for elevator systems. This article will provide a

[Contact Us](#)



Protective Relay Basics

Traditionally, protective relays were electromechanical devices utilizing induction disk, coils, contacts, and solenoid elements to determine protective characteristics.

[Contact Us](#)

Safety Relays for Lift Systems , Hengstler

Hengstler safety relays provide reliable operation for elevators and lift systems, ensuring passenger safety.

[Contact Us](#)



Practical handbook for relay protection engineers , EEP

Also principles of various protective relays and schemes including special protection schemes like differential, restricted, directional and distance

[Contact Us](#)



Overview of Relay Protection Case Studies

They facilitate the understanding of relay coordination, relay settings, fault analysis, and the selection of appropriate protection schemes. Ultimately, these case studies contribute to the

[Contact Us](#)



Review of Fault Modes, Diagnosis and Prediction Methods for Elevator Systems

Purpose With the rapid development of large-scale urbanization and the widespread adoption of high-rise buildings, elevators have become a critical component of modern infrastructure.

[Contact Us](#)

Safety in Elevators: A Comprehensive Guide to Vertical

Digitalization: A New Frontier in Elevator Safety
The integration of digital technology in elevator systems marks a significant advancement in safety

[Contact Us](#)



Introduction to Elevator Safety Protection Systems

Elevator safety protection systems are critical components designed to ensure the safe operation of elevators, protecting passengers and equipment

[Contact Us](#)



Elevator three-phase AC relay -ABJ1-12X

The ABJ1-12X Three-Phase AC Relay is a protection relay designed for elevator systems. It provides essential functions such as phase sequence protection,

[Contact Us](#)



Power System Protective Relays: Principles & Practices

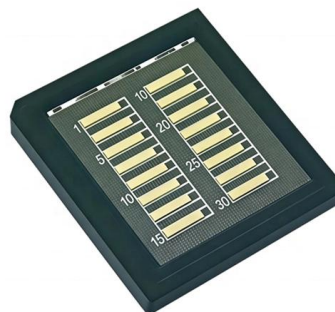
Protective relays and devices have been developed over 100 years ago to provide "lastline"of defense for the electrical systems. They are intended to quickly identify a fault and isolate it so the balance of

[Contact Us](#)

Current trends in elevator systems protection including fault tolerance

Current trends in elevator systems protection including fault tolerance and condition monitoring techniques implemented in emerging synchronous motor drives Vasileios I. Vlachou School of

[Contact Us](#)



Protective Relaying Principles and Applications

Protective Relaying Principles and Applications The article provides an overview of protective relaying principles and their applications for high-voltage power system

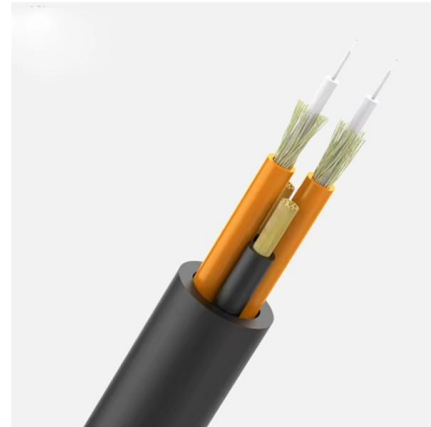
[Contact Us](#)



Safety Relay Circuits

In this article, we focus on the control mechanism: the safety relay circuit, which forms the logical backbone of UCMP control by providing redundant

[Contact Us](#)



Safety and Protective Devices Used in an Electric Elevator

Electric elevators are the electrically operated devices which are used for lifting up and down, moving load in suitable direction, and lifts in multistoried buildings for facilitating up and down movements of

[Contact Us](#)

SMART PROTECTIVE SYSTEM OF ELEVATORS

This paper mainly focuses on the issues of existing elevator system in which there must be provided with protective system which will ensure the safety of people and goods. The deployment of automation to

[Contact Us](#)



Exploring Safety Electronics in Modern Elevator Systems

As elevator systems become more sophisticated, the role of these electronics becomes even more important in protecting people and equipment. This white paper explores how safety relays, terminal

[Contact Us](#)



Microsoft PowerPoint

International Building Code- 2003 Chapter 30
Elevators and Conveying Systems Section 3006 -
Machine Rooms 3006.5 -Shunt Trip. Where
elevator hoistways or elevator machine rooms

[Contact Us](#)



Contact Us

For datasheets, pricing, or custom fiber access solutions, please visit:
<https://frindel.es>