

Mechanical Protection Optical Cable Junction Box





Mechanical Protection Optical Cable Junction Box



Terminal and Junction Boxes (Ex e, Ex i, Ex op) , Explosion Protection

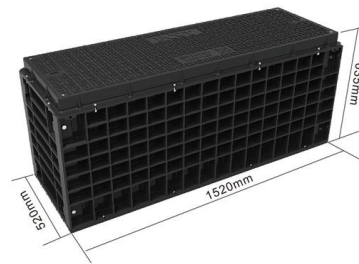
The GR.TFO splice boxes in glass fiber reinforced IP66 polyester enclosures enable safe protection of fiber optic cable splices in hazardous areas. Each of these sturdy splice boxes can hold up to 8

[Contact Us](#)

Intelligent Condition Monitoring Technology of OPGW Optical Cable

To improve the stability and reliability of the OPGW optical cable junction box, this paper proposes an intelligent monitoring technology, which can comprehensively monitor the environmental

[Contact Us](#)



Optical Fiber Waterproof Connection Box FTTH Drop Cable Protection Box

Optical Fiber Waterproof Connection Box Outdoor IP67 SC Singlemode Fiber Optic Protection Box. Protect the optical fiber from dust and damage, waterproof, snow-proof, rain-proof, dust-proof, dirt

[Contact Us](#)



RIBE® Electrical Fittings - OPTOFIT® OPGW / OPPC Accessories

Our RIBE-OPTOFIT® accessories offer the ideal solution for connecting fiber optic overhead cables and terminating the optical signal, and perfectly complement proven RIBE-OPTOFIT® fittings.



Metal Joint Box for Cable Management

A Metal Joint Box is an indispensable device for connecting and protecting optical cables in a variety of applications. It is commonly used in aerial, underground,

[Contact Us](#)



Fiber Optic Splice Closure, Electrical Cable Junction

Fiber optic enclosure is attributed to the mechanical pressure sealing joint or heating shrink sealing system, and is a continuous protection device for supplying optical,

[Contact Us](#)



Metal Joint Junction Box, Splicing Box Manufacturer

The junction box supports, organizes, and protects optical fibers while ensuring their minimum bending radius is not exceeded. It's rated IP65 and provides entry for all

[Contact Us](#)





Fiber Optic Splice Closure, Electrical Cable Junction

Fiber optical splice closure is widely used in communication, network systems, CATV cable TV, optical cable network systems, and so on. It is used for protective

[Contact Us](#)



How Does an Optical Junction Box Work?

Access: Open the junction box to access the internal components. **Prepare Cables:** Clean and prepare the fiber optic cables for splicing, ensuring the ends are polished properly. **Splicing:** Use

[Contact Us](#)

Terminal and Junction Boxes (Ex e, Ex i, Ex op) , Explosion Protection

Terminal and Junction Boxes (Ex e, Ex i, Ex op) Pepperl+Fuchs offers a comprehensive range of terminal boxes and junction boxes in types of protection Ex e (increased safety), Ex ia (intrinsic



[Contact Us](#)



Fiber Terminal Box vs Junction Box: Key Differences

Compare fiber terminal box vs junction box in functions, applications, and installation. Learn which suits FTTH fiber vs electrical wiring.

[Contact Us](#)



Amazon : PNGKNYOCN Fiber Optic Junction Box,

About this item The optical cable junction box is suitable for direct and branch connections of optical cables in overhead, pipeline, direct burial and other laying

[Contact Us](#)



Metal Joint Box for Cable Management

Description A Metal Joint Box from EPCOM provides an essential solution for protecting critical cable connections in modern electrical and telecommunication

[Contact Us](#)



Intelligent Condition Monitoring Technology of OPGW Optical Cable

To improve the stability and reliability of the OPGW optical cable junction box, this paper proposes an intelligent monitoring technology, which can comprehensively monitor the environmental

[Contact Us](#)



Fiber Termination Box Installation & Maintenance Guide

What is a Fiber Termination Box? A fiber termination box is the standard instrument used in fiber optic networks to connect, secure, and protect

[Contact Us](#)





Configuration of Optical Fiber Junction Boxes for Outdoor Optical

When choosing junction boxes for outdoor use, it is important to consider factors such as weather resistance, protection against dust and moisture, and compatibility with the optical fiber

[Contact Us](#)



Fiber Optic Joint Enclosure Box , Splice Protection Unit

Fiber optic joint enclosure box protects splices in underground, aerial, or wall-mounted fiber optic installations with secure, weatherproof sealing.

[Contact Us](#)

Fiber Optic Cable Joint Box

Riteoptic fiber optic cable joint box provides optical, sealing and mechanical strength of the continuity between adjacent fiber optic cable connection protection device.

[Contact Us](#)



Ultimate Download Secure Your Fiber Optic Cable

In the complex world of networking, preventing signal loss and protecting fibers from environmental damage is paramount, making the junction

[Contact Us](#)



EXbox® Fiber Optics

With the increasing digitization and requirement for high-speed networking, the

[Contact Us](#)



How to Choose the Right Optical Junction Box?

Optical junction boxes, also known as fiber splice boxes or fiber distribution boxes, serve as critical components in the optical fiber network. They accommodate and protect the fiber splices

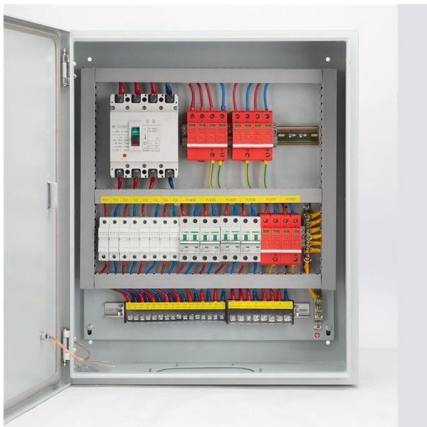
[Contact Us](#)

An In-Depth Look at Junction Boxes - Cable Ties Unlimited

Installing boxes in inaccessible locations
Mixing data and power cables incorrectly
Skipping regular inspections
Conclusion Junction boxes may not be visible, but their role in electrical



[Contact Us](#)



Terminal and Junction Boxes (Ex d) , Explosion Protection

EJB terminal boxes and junction boxes offer an extended operating temperature range down to -60 °C and can be configured as per customer specification--including different types and quantities of

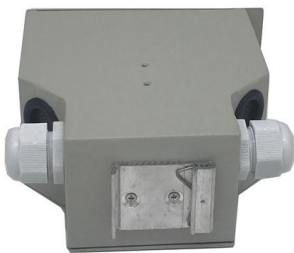
[Contact Us](#)



Optical Cable Junction Boxes: Functions and Features

Optical cable junction boxes are used in various communication paths, either wall mounted, aerial, in pipes or buried in the ground. In some

[Contact Us](#)



Dome Mechanical Fiber Optic Cable Junction Box 48

The big entrance is used for the sealing of uncut straight-through fiber cable, the

[Contact Us](#)

Contact Us

For datasheets, pricing, or custom fiber access solutions, please visit:
<https://frindel.es>