

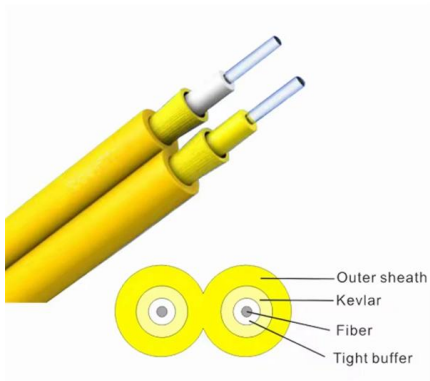
# Meaning of floor-mounted distribution box





## Meaning of floor-mounted distribution box

---



### Guide to floor power: floor boxes, busbars and

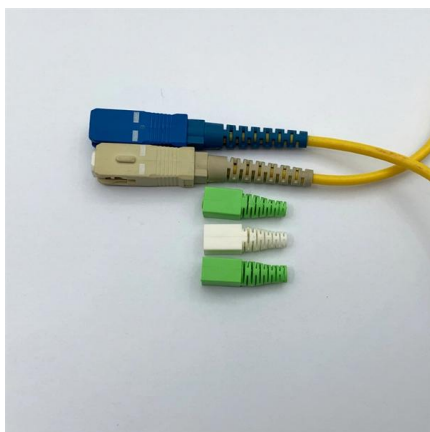
Floor boxes are boxes made of steel/stainless steel and plastic, designed to be installed into raised access floors. They come in a range of sizes and there are

[Contact Us](#)

### Distribution boards components

Distribution boards (generally only one in residential premises) usually include the meter (s) and in some cases (notably where the supply utilities impose a TT earthing system and/or tariff

[Contact Us](#)



### Floor Distribution Box

Fibernet FTTH Floor distribution box designed to be install on each level of a multi-dwelling unit building for fiber to the home applications. It is the transition point between the riser cable and the horizontal

[Contact Us](#)

### Technical catalogue Floor distribution systems and systems for

Floor trunking systems ABB proposes two underfloor distribution systems: Scattoplast and Undernet. The Scattoplast system is suitable for traditional floors and is therefore incorporated in the floor



### **Distribution Boxes Explained: Types, Functions, and**

Learn about distribution boxes, their types, functions, and safety features to ensure efficient and secure electrical power distribution in any building.

[Contact Us](#)



### **The Complete Guide To Installing a Floor Box**

Get all the information you need on installing floor boxes. Learn step-by-step tips and tricks to ensure proper installation, functionality, safety, and aesthetics.

[Contact Us](#)



### **Understanding Distribution Boxes: A Comprehensive Guide**

Floor-standing distribution boxes are usually used in larger electrical systems that require more internal space, more circuits, or a higher load capacity.

[Contact Us](#)

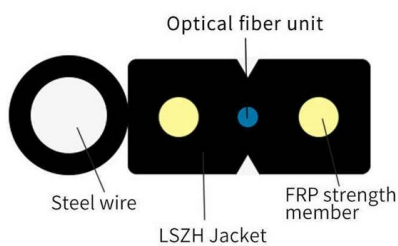
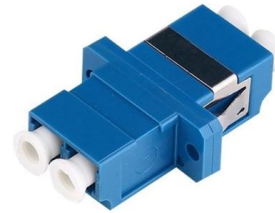




## Legrand AV , Understanding Floor Boxes: Applications and Installation

Explore the types, benefits, and installation processes of floor boxes to enhance power and AV connectivity in modern workspaces.

[Contact Us](#)



### The installation requirements for the distribution box

Learn how to install a distribution box safely and correctly. Covers wiring, placement, standards, and expert tips for a compliant setup.

[Contact Us](#)

### Distribution Board vs. Distribution Box: What's the

Understand the key differences between distribution boards and boxes--functions, applications, safety, cost, and when to use each one.

[Contact Us](#)



### Wall-Mounted vs. Floor-Mounted Distribution Boxes:

What is a Floor-Mounted Distribution Box? A floor-mounted distribution box is a power control unit that is installed directly on the floor, often

[Contact Us](#)

### UFAD (Underfloor Air Distribution): The Complete Guide



Explore AirFixture's guide to UFAD, raised floors, chilled beam HVAC, trench heating & efficient mass timber building solutions.

[Contact Us](#)



### **Guide to floor power: floor boxes, busbars and**

Learn more about floor boxes, busbars, cable hives and grommets and find the ideal floor power product for your office or commercial premises.

[Contact Us](#)



### **RECESSED FLOOR DISTRIBUTION BOXES Electrical**

Innovative, resistant and with technical features that facilitate assembly, AVE recessed floor distribution boxes represent an optimal solution to protect the

[Contact Us](#)



### **The Complete Guide to Floor Box with Power and Data**

This guide will detail floor box product types, structural designs, functional classifications, installation methods, and application scenarios to help

[Contact Us](#)



## What is the Ideal Installation Height for a Distribution Box

Install a distribution box at 4.5 to 5.5 feet high for safety, accessibility, and compliance. This height ensures easy use and protection from hazards.

[Contact Us](#)



## Distribution Boards

Distribution boards, often referred to as electrical panels or breaker boxes, serve as the nerve center of any electrical system. Here we explore the crucial parts of a distribution board and gain insights into

[Contact Us](#)

## The Ultimate Guide to Floor Boxes: A Versatile Solution for Electrical

Discover the benefits of floor boxes and make sure your electrical and data connections are reliable, efficient, and safe.

[Contact Us](#)



## The Ultimate Guide to Floor Boxes: A Versatile Solution for Electrical

The boxes are integrated into the floor structure and can be accessed by lifting a floor panel. This type of floor box offers the advantage of easy reconfiguration and cable management in

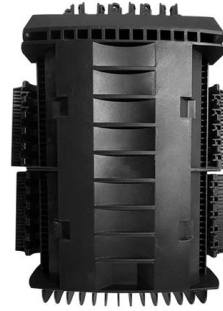
[Contact Us](#)



## Distribution Box Guide: Types, Components & Solutions

What is a Distribution Box? A distribution box, or DB box, is a circuit breaker enclosure. It is a vital part and central hub of any electrical system. The

[Contact Us](#)



### Exploring Data Center PDUs: Floor PDUs vs. Rack

Explore the different types of server rack PDUs. Floor-Mounted PDUs Floor-mounted or cabinet-based PDUs can supply 300kVA or more. Larger and

[Contact Us](#)

### Your expert guide to floor box installation

What is a floor box? A floor box is a flush-mounted electrical enclosure installed within the floor, providing access to power sockets, data ports, or AV connections.

[Contact Us](#)



### Understanding Distribution Boxes: Your Guide to Power

Distribution boxes, or electrical junction boxes as they are sometimes called, play a vital role in electrical systems. They act as the central location

[Contact Us](#)



## Exploring Floor Boxes & Accessories for UK Cabling: A

Discover the diverse world of floor boxes and accessories tailored to meet various cabling requirements in the UK. From flush-mounted to raised floor solutions, explore essential accessories

[Contact Us](#)



## Contact Us

---

For datasheets, pricing, or custom fiber access solutions, please visit:  
<https://frindel.es>