

Maximum wind speed for overhead optical cables





Overview

Wind speed (up to 320km/h) Example: A 288-fiber ADSS cable on 50m poles requires 7/2. Tensioning: Set messenger wire tension to 15–20% of breaking strength to allow thermal expansion. Clearance requirements for aerial cables are defined in Section 23 of the National Electrical Safety Code® (NESC®). Understanding Overhead Fiber Optic Cable Overhead fiber optic cable are designed to be suspended from utility poles or dedicated structures, leveraging existing aerial infrastructure to minimize construction costs. For issue to all Ausgrid and Accredited Service Providers' staff involved with the design of overhead lines, and is for reference by field, technical and engineering staff. Where this Standard is issued as a controlled document replacing an earlier edition, remove and destroy the superseded. If the cable remains outside for more than 24h during installation protective material should be used to prevent cable damage.



Maximum wind speed for overhead optical cables



Overhead Network Solutions for Fibre Cable

These cables are fully tested in our overhead test track at Emtelle HQ in Hawick. Emtelle have carried out extreme weather tests on these cables with wind speeds of 61mph (98 km/h) or 5mm of ice and

[Contact Us](#)



ITU-T Rec. L.163 (11/2018) Criteria for optical fibre cable

Summary Recommendation ITU-T L.163 describes criteria for the installation of optical fibre cables defined in Recommendation ITU-T L.110 in remote areas with lack of usual

Fiber Optic Cables in Overhead Transmission Corridors

Many electric utilities are installing high capacity fiber optic cables and wires on their high voltage lines to satisfy their own internal communication needs and to gain additional revenues by leasing excess

[Contact Us](#)



High-Speed Operation of Fiber-Optic Link Impaired by Wind Gusts

In this work, we report on experimental measurements and theoretical analysis characterization for PMD-based propagation effects in optical fibers influenced by wind gusts. The study was performed

[Contact Us](#)



infrastructure for

[Contact Us](#)



OPTICAL FIBER CABLE APPLICATIONS GUIDELINES

However, no single optical cable design is universally superior in all applications. In general, optical fibre cables installed in an outdoor environment are exposed to more severe mechanical and

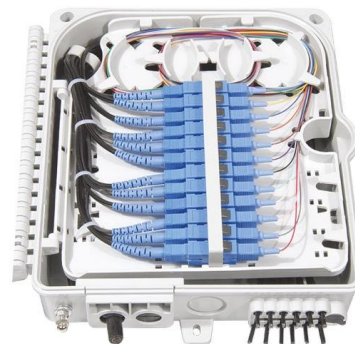
[Contact Us](#)



Overhead (Aerial) Optical Fiber Cables , UpCodes

Overhead optical fiber cables with a non-current-carrying metallic member must adhere to specific regulations when entering buildings. When these cables are installed alongside electric conductors,

[Contact Us](#)



TECHNICAL SPECIFICATION

2.1.2 Fibre Optic Cable Construction Overhead Fibre Optic Cables shall be OPGW (Optical Ground Wire). The OPGW cable is proposed to be installed on the transmission lines of Orissa Power

[Contact Us](#)

EFFICIENT FIELD TERMINATION

- 1. PREPARE** - Strip and clean the fiber
- 2. INSERT** - Fast and easy insertion
- 3. LOCK** - Secure connection achieved

No Polishing | No Epoxy

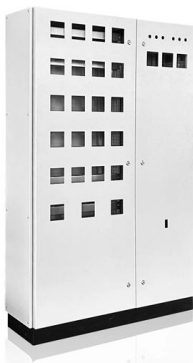
Eliminates cable excess length and pigtail splice storage. Designed for high-efficiency onsite installation.



Wind speed measurement using distributed fiber optic sensing

Aspects of the present disclosure describe distributed fiber optic sensing (DFOS) systems, methods, and structures that advantageously measure wind speed at utility poles that support fiber

[Contact Us](#)



Network Cable Maximum Lengths: Ethernet, Coaxial, and Fiber Optic

This guide dives deep into the maximum length constraints of the three most common network cables--Ethernet, coaxial, and fiber optic--explaining why these limits exist, how they vary

[Contact Us](#)

GENERAL INFORMATION

Temperatures - Installation & Operation
Installation and operating temperatures for indoor and indoor/outdoor fiber optic cables are defined in standards ICEA S-83-596 "Standard for Optical Fiber

[Contact Us](#)



General Optical Fiber Cable Installation Considerations

General Optical Fiber Cable Installation Considerations Some key considerations for installing optical fiber cable are highlighted below. Failure to follow these guidelines may result in damage or

[Contact Us](#)

Fibre to the Home Aerial cables in FTTH



In FTTH deployment EUROPACABLE strongly recommends designers to respect a maximum 0.3% fibre elongation and 0,5% cable elongation at the MAT UROPACAB to ensure FttH overhead

[Contact Us](#)



Overhead Design Manual

Ausgrid's overhead line designs and standards are based on co-ordinated levels of insulation withstand voltages for the various line configurations and equipment types, together with the correct application

[Contact Us](#)

The FOA Reference For Fiber Optics -Outside Plant

Unlike aerial installations, they are less affected by most adverse weather like high winds or freezing rain. But underground installations can be vulnerable to flooding

[Contact Us](#)



Ordering information

MO	1	2	3	4	5	6
Model	SP2M1	SP2M2	SP2M3	SP2M4	SP2M5	SP2M6
Product name	Patch Panel	Patch Panel	Patch Panel	Patch Panel	Patch Panel	Patch Panel
Illustration						
MO	1	2	4	1	2	4
Maximum number of cores	144	288	576	144	288	576
Product size (including modules and end-caps)	482,8*252*144 mm	482,8*252*181 mm	482,8*252*177 mm	482,8*252*144 mm	482,8*252*181 mm	482,8*252*177 mm
Standard color code	RAL9005	RAL9005	RAL9005	RAL9005	RAL9005	RAL9005
Inventory	2	2	2	2	2	2

Section VII Engineering Instruction OPTCL

The splice box of the aerial optical cable should be kept overhead. Therefore it is necessary to fix & determine the splicing location as per the designated cable drum length.

[Contact Us](#)



Title of paper

This work examines the wind induced loads on various train overhead conductor cables and analyses the impact of wind angle and wind speed on the aerodynamic forces on the cables.

[Contact Us](#)



Aerial Cable Placing Procedure

Abstract An aerial cable is an insulated cable usually containing all fibres required for a telecommunication line, which is suspended between utility poles or electricity pylons. Aerial optical

[Contact Us](#)



Overhead Fiber Optic Cable Installation: Requirements

Overhead cable must withstand environmental stresses like wind, ice, and temperature fluctuations. Industry standards (e.g., ITU-T G.652) dictate: Tensile

[Contact Us](#)



How To Set Up Overhead Fiber Optic Cable? -- ZMS Cable

(2) overhead fiber optic cable can be used 72.2mm galvanized steel stranded wire for hanging cable suspension. Hanging wire and fiber optic cable to be well-grounded, to have lightning, electrical

[Contact Us](#)



Overhead Fiber Optic Cable Laying



Requirements and

Fiber optic cable on overhead poles should be U-shaped expansion bend every 3-5 poles. The length of each kilometer of fiber optic cable should be about 15

[Contact Us](#)



TECHNICAL SPECIFICATION Systems FOR OPTICAL GROUND

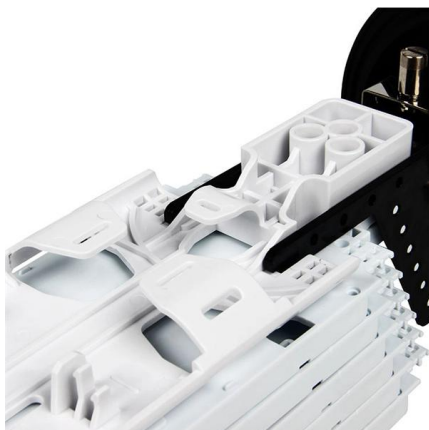
PART A: SPECIFICATION FOR THE SUPPLY OF OVERHEAD OPTICAL GROUND WIRE (OPGW), ALL DIELECTRIC SELF SUPPORTING (ADSS) AND METAL FREE OPTICAL FIBRE DUCT CABLE.

[Contact Us](#)

Theoretical and experimental study on optical polarization states in

Theoretical and experimental study on optical polarization states in overhead optical cables under complex weather conditions such as real lightning Weihua Lian, Xingrui Su, Kaijing Hu,

[Contact Us](#)



Optical Fiber Cable Installation Guideline

While fiber optic cables are typically stronger than copper cables, it is still important that the cable maximum pulling tension not be exceeded during any phase of cable installation.

[Contact Us](#)



Sag and Tension

Such conditions might include a maximum ice thickness that could form on the cable, the lowest temperature expected for that ice condition, and an expected wind speed to which the cable might

[Contact Us](#)



OPGW Cable Specifications and Guidelines

The document specifies requirements for OPGW cabling including optical fiber characteristics, cable construction details, and installation specifications. It defines requirements for dual-window single

[Contact Us](#)

Contact Us

For datasheets, pricing, or custom fiber access solutions, please visit:
<https://frindel.es>