

Making elbows with cable tray cover plates





Overview

Just use strong forceps to cut off the corresponding part of the wire mesh cable tray, then manually concave it into the desired shape. This video shows metal fabrication techniques, DIY cable tray projects, and tips for perfect bends and joints. Whether you are a DIY enthusiast, electrician, or metalworker, this tutorial will help you create cable tray elbows like a pro. Determine the angle and required radius size of the elbow, and choose the appropriate elbow type based on these parameters, such as 90 degree elbow, 45 degree elbow, etc. Elbows are directional changes, typically 45 deg or 90 deg, used to navigate corners horizontally or change elevation vertically (risers).



Making elbows with cable tray cover plates



FLAT ELBOWS SECTION 04: CABLE TRAY SYSTEMS

Each cover fixing kit is supplied with the appropriate cover fixing bracket for either non-ventilated cover or ventilated cover based on the part number ordered.

[Contact Us](#)

A Guide to Cable Tray Accessories and Their Functions

Explore a detailed guide to cable tray accessories and understand their uses in ensuring safety, stability, and efficiency in electrical system

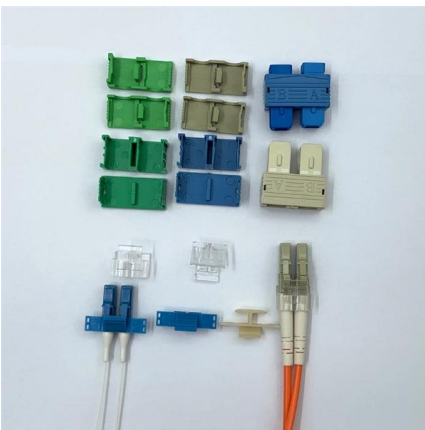
[Contact Us](#)



Low Price Cable Tray Elbow Customizable Color , Alibaba

Buy in bulk around \$1.3 cable tray elbows, available in galvanized and stainless steel. Ideal for industrial use and cable management, suitable for wholesalers and distributors.

[Contact Us](#)



30° Horizontal Elbow , Cable Tray Systems , PUPCO

Discover our 30° Horizontal Elbow for cable tray systems. Seamlessly transition between sections and fittings, reducing tray width. Contact us today!



Connecting Cable Trays: Your Guide to Secure and

Learn common methods for connecting cable trays safely and efficiently. Our guide covers splice plates, quick-connects, and key tips for secure

[Contact Us](#)



Method for Fabricating 90-Degree Bend Elbows for Cable Tray

Making bent elbows for cable trays according to the formulas provided in the diagram is for reference only. The data is directly related to the width or height of the cable tray, and calculations can be

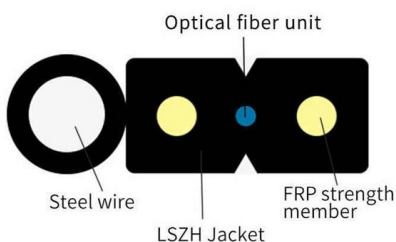
[Contact Us](#)



CABLE TRAY INSTALLATION DETAILS WITH

Main keywords for this article are Cable Tray Installation Details With Pictures, Cable Tray Installation Details DWG, Cable Tray Installation Drawings, Cable Tray

[Contact Us](#)





How to make cable tray elbows?

Making cable tray elbows requires certain professional knowledge and skills, as well as attention to safety and environmental protection issues. During the production process, relevant industry

[Contact Us](#)



Cable Tray Technical Guide A practical guide to product selection and

SOLID-BOTTOM CABLE TRAY Providing additional cable protection, solid-bottom cable tray is sometimes preferred to support and protect numerous small instrumentation and control cables.

[Contact Us](#)

Professional Cable Tray Elbow Making , Metal Fabrication Tutorial

Professional Cable Tray Elbow Making , Metal Fabrication Tutorial Learn how to make cable tray elbows professionally with step-by-step guidance.

[Contact Us](#)



How to make Cable tray VERTICAL OUTSIDE ELBOW 90°deg. (45

Vertical outside elbow 90°degree(45°-45°) 50mm depth cable tray. Practical tutorial 5

[Contact Us](#)

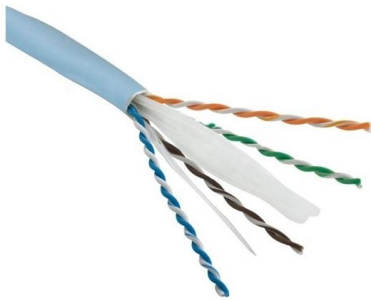




Document DICOS

Splice plates should be placed on the outside of the cable tray, unless otherwise specified by the manufacturer, with the bolt heads on the inside of the cable tray (see Figure 3-37).

[Contact Us](#)



INSTALLATION GUIDE

Make sure all surfaces of the pulling devices that come in contact with the cable and ladder tray are covered by a protective covering of plastic or tape to prevent surface scoring.

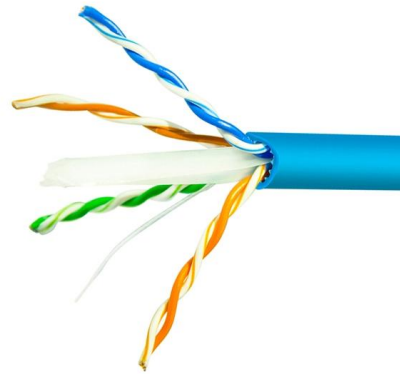
[Contact Us](#)



Cable Tray Technical Guide A practical guide to product selection and

The choice of method should be discussed with a local inspector. The best decision may be to extend only the cables, creating a discontinuity in the cable tray.

[Contact Us](#)



TECHNICAL AND SIZING DATA

We have more than a decade's worth of experience making and designing quality cable tray and cable management systems. Our knowledgeable production team works closely with each customer to

[Contact Us](#)



Full cable tray systems specification document

B. Cable tray systems are defined to include, but are not limited to straight sections of [ladder type] [trough type] [solid bottom type] [channel type] cable trays, bends, tees, elbows, drop-outs, supports

[Contact Us](#)



CABLE TRAY SYSTEM GFK Fittings

Due to the expansion of the material, the following points during installation must be observed : The supporting systems must not be fixed close to the splice plates For fixing the cables trays on

[Contact Us](#)

Cope

I-Beam Cable Tray: Our technically advanced cable trays are complemented by our tray covers and wire management accessories, as well as our unparalleled

[Contact Us](#)



Learn How to Make Various Elbows of Wire Mesh Cable Tray in

Just use strong forceps to cut off the corresponding part of the wire mesh cable tray, then manually concave it into the desired shape.

[Contact Us](#)



Trunking Cutting Techniques Guide , PDF

The document provides instructions for forming various bends and joints in electrical trunking and cable trays. It describes: 1) How to mark and cut a right-angle

[Contact Us](#)



How to make an elbow on a cable tray cover

Cara membuat elbow pada cover cable tray
#cabletray #elbow

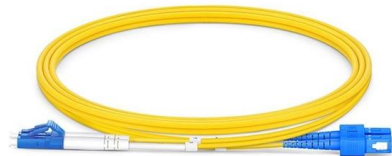
[Contact Us](#)



Make a (45-45) 90 Gusset Bend in Electrical Cable Tray In One Piece

How to make a 90 electrical cable tray bend to measurement with a gusset of your choice using one piece of tray. Great if you are new or just forgot how to do it, this easy to follow guide makes

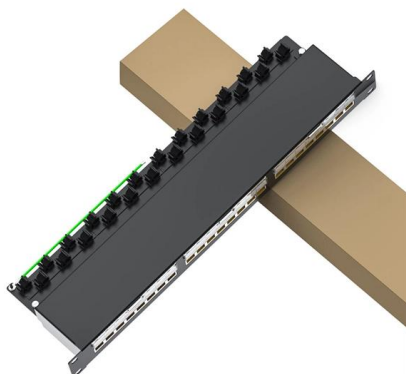
[Contact Us](#)



Elbow for electrical supply cables , wire channels , trays , metal

Metal elbows for cable trays are an essential component in electrical installations, ensuring safety, durability, and aesthetic appeal. They are an excellent choice for industrial, commercial, and

[Contact Us](#)

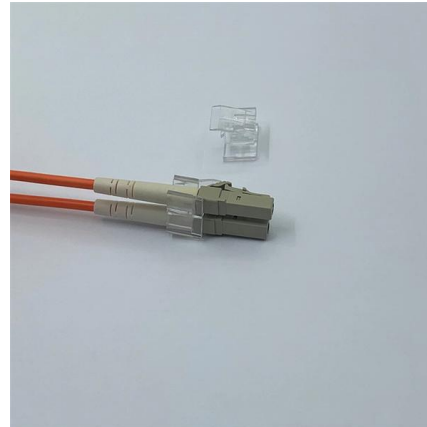




RS PRO Elbow Cover Steel Cable Tray Accessory, 100mm Width,

Introducing an Elbow Cover by RS PRO - One of a series of cable tray accessories designed to create the ultimate solution for safe and efficient cable routing. Made from high-quality steel coated with HR

[Contact Us](#)



Cable Tray Fitting Accessories

These cable tray fittings and accessories are essential for the seamless installation of an integrated cable management system, allowing for functions such as

[Contact Us](#)

How to Install Cable Tray: A Comprehensive Guide to Different Cable

Welcome to our step-by-step guide on installing cable trays! In this video, we'll explore the different types of cable trays available and provide detailed instructions for their installation.

[Contact Us](#)



Cable Tray / Ladder Tray INSTALLATION PowerTray

COVER INSTRUCTIONS:) Use to enclose cable tray and protect cable and wiring from damage or debris.) Provided with self-tapping tek screws to mount into siderails. eaked, diamond plate, and

[Contact Us](#)



45° Vertical Elbow , Cable Tray Systems ,



Discover our 45° Vertical Elbow for cable tray systems. Seamlessly transition between sections and fittings, reducing tray width. Contact us today!

[Contact Us](#)



Vertical Cable Support Elbow , Ladder Trays , Cable Tray and Reels

The aluminum I-beam design of ITray is perfect for industrial installations with large diameter cables in long span situations, minimizing total tray width and creating a smooth transition between straight

[Contact Us](#)

Contact Us

For datasheets, pricing, or custom fiber access solutions, please visit:
<https://frindel.es>