

Maintenance Regulations for 220kV Relay Protection Devices



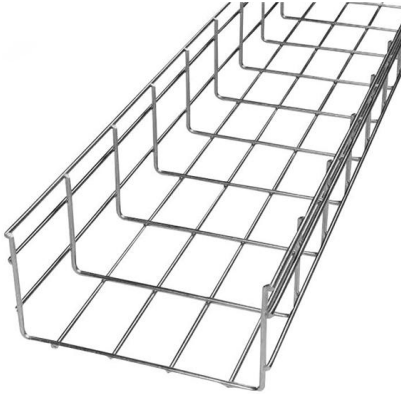


Overview

Establish a Protection System Maintenance Program (PSMP) as identified in PRC-005. Fingrid's application guideline for relay protection presents the operating principles of the relay protection in Fingrid's 110, 220 and 400 kV power networks and the requirements for operation of the protection systems of Fingrid customers (hereinafter referred to as 'customer'). APPROACH EPRI's Nuclear Maintenance Applications Center reviewed protective relay types and specific applications of these components in power generating station protective schemes, especially those schemes used in nuclear power plants. Protection systems play a key role in ensuring the safe and reliable operation of the entire electrical grid including generation, transmission, and distribution for utility and industrial applications. Protective relays are your most powerful defense against long, costly outages and extensive.



Maintenance Regulations for 220kV Relay Protection Devices



Numerical Relay Based 220 kV Transmission Line Backup Distance

The relay performance during the commissioning is tested using ISA Automatic 3-phase protective relay test set, Digital Relay Test System (DRTS-6) . The fault current and fault voltage injection system

[Contact Us](#)

Antamina 220 kV Relay Settings Report

This document provides protection relay settings for the Antamina Project 220 kV substation and transmission lines. It includes project data such as network

[Contact Us](#)



(PDF) Study and Application of 220kV Substation Relay

Professional training for relay protection has been in the mode of single protective device adjustment since 2000, testing the reliability, timeliness and

[Contact Us](#)



STATCOM Solutions

Using mechanically switched devices to increase the inductive or capacitive rating of the STATCOM is a cost effective approach for adding additional steady-state capacity, or for increasing the non



Power System Protective Relays: Principles & Practices

Protective relays and devices have been developed over 100 years ago to provide "lastline" of defense for the electrical systems. They are intended to quickly identify a fault and isolate it so the balance of

[Contact Us](#)

Research on Remote Maintenance Technology of Relay Protection in

Abstract. According to the work content of relay protection outage maintenance, a remote maintenance scheme covering all work items of relay protection routine maintenance is proposed; Combined with

[Contact Us](#)



Research on Remote Maintenance Technology of Relay Protection in

This paper presents a technical scheme for remote maintenance of relay protection in smart substation to realize remote operation and maintenance of protection equipment.

[Contact Us](#)





Relay protection of the main grid and customer connections

Fingrid's application guideline for relay protection presents the operating principles of the relay protection in Fingrid's 110, 220 and 400 kV power networks and the requirements for operation of the protection

[Contact Us](#)



SOUTHERN REGIONAL POWER COMMITTEE BENGALURU

The protection circuits and relays shall be electrically and physically segregated into two groups each being independent and capable of providing uninterrupted protection even in the event of one of the

[Contact Us](#)



INSTALLATION AND MAINTENANCE GUIDELINE FOR PROTECTIVE RELAY

A preventive maintenance program should ensure the functionality of the relay system without causing additional problems in the process. This document establishes minimum guidelines for the

[Contact Us](#)



Practical experience on 220 kV substation protection

Integrated protection and control system The paper presents some gained knowledge on customer specification of technical requirements for the

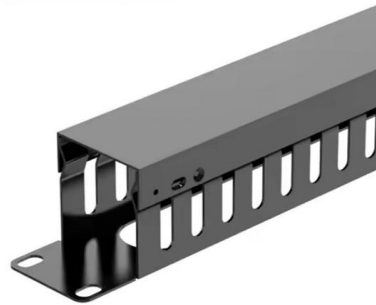
[Contact Us](#)



Installing and Maintaining Protective Relay

Facilities need to perform installation tests, implement preventive maintenance programs, and perform comprehensive commissioning tests to verify the integrity of both existing protective relay systems

[Contact Us](#)



INSTALLATION AND MAINTENANCE GUIDELINE FOR

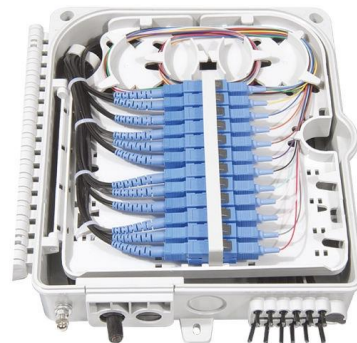
A preventive maintenance program should ensure the functionality of the relay system without causing additional problems in the process. This document establishes minimum guidelines for the

[Contact Us](#)

Operation, maintenance, and field test procedures for

Operation, maintenance, and field test procedures for protective relays and associated circuits (photo credit: Omicron) The protection circuits

[Contact Us](#)



Protection Audit of Substation-Nirav Taunk

Protection Audit is mainly concerned with the checking of adequacy & robustness of protection setting & schemes and it is necessary to carry out this audit to ensure the continuity of service. The audit

[Contact Us](#)

Relay Protection in HV/MV Substations:



Calculations,

Relay protection calculations determine the threshold values and parameters for the protective relays based on the substation's operational and

[Contact Us](#)



Keeping electrical switchgear safe HSG230

75 Periodic testing of the protection relay scheme is a separate requirement to the maintenance of switchgear, and is needed to ensure the integrity of a system.

[Contact Us](#)

Protective Relay Maintenance and Application Guide

When required to operate because of a faulted or undesirable condition, it is imperative that protective relays function correctly. A strong maintenance and test program will ensure protective relays

[Contact Us](#)



CONTROL AND RELAY PANEL

The control and relay board panel for 220KV system and 132KV system shall be duplex/ simplex type (as per the Project LOA) for accommodating all relays and aux. relays for protection of respective

[Contact Us](#)





TD-3323S

SUMMARY This utility standard establishes the requirements for testing and maintaining protection systems, automatic reclosing, and sudden pressure relaying.

[Contact Us](#)



220 kV Control & Relay Panel Specifications

The document discusses requirements for 220kV control and relay panels for substations. It specifies five categories of "simplex" design panels required: 1) for

[Contact Us](#)

pjm-relay-testing-and-maintenance-practices-8-18-2006

The objective of a uniform Relay Test and Maintenance program is to insure the integrity of the protection system on a periodic basis after installation. Calibration testing is required to verify relay

[Contact Us](#)



Relay Maintenance and Testing

Whether in your substation or power plant, regulations from NFPA and NERC require an ongoing and systematic program to test, maintain, and document the performance of your protection scheme

[Contact Us](#)

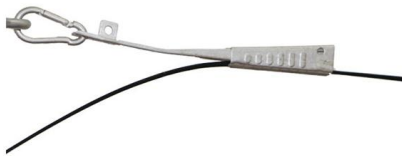
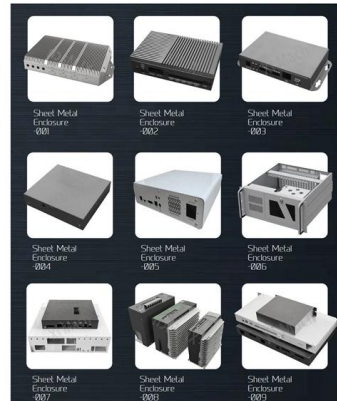




PRC-005-6

Identify which maintenance method (time-based, performance-based per PRC-005 Attachment A, or a combination) is used to address each Protection System, Automatic Reclosing, and Sudden

[Contact Us](#)



Relay Testing Standards , Delgado Relay Protection Reference

They provide comprehensive guidelines for conducting tests, specifying equipment requirements, and reporting results. Compliance with these standards is essential to validate the

[Contact Us](#)

Relay Testing and Maintenance , Delgado Relay Protection Reference

In conclusion, relay testing and maintenance are vital for ensuring the reliable operation of protective relays in power systems. Through testing, we can assess their performance and

[Contact Us](#)



220kV Substation Maintenance Overview , PDF

1. The document discusses the operation and maintenance of a 220kV substation, including maintenance schedules for various equipment. 2. Equipment installed at

[Contact Us](#)



Research on Remote Maintenance Technology of Relay Protection in

Relying on the operation evaluation of the relay protection equipment during the normal operation of the on-line monitoring system of the secondary equipment in the smart substation,

[Contact Us](#)



A Design of 220 kV Line Protection Action Deduction

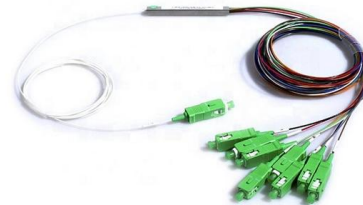
At present, the traditional operation and maintenance monitoring methods of relay protections have poor timeliness, while some automatic monitoring methods have insufficient early warning performance,

[Contact Us](#)

Understanding IEEE Standards for Protection Relays: Key Guidelines

Conclusion IEEE Standards for Protection Relays provide essential guidelines for engineers, ensuring reliable and coordinated protection schemes in electrical power systems.

[Contact Us](#)



Contact Us

For datasheets, pricing, or custom fiber access solutions, please visit:
<https://frindel.es>