

# **Main lines run separately to distribution boxes**





## Overview

---

Distribution connect to the transmission system and lower the transmission voltage to medium voltage ranging between 2 and 33 kV with the use of. A primary feeder arrangement is the configuration of main power lines that distribute electricity from substations to various distribution points. It ensures efficient, reliable delivery to end users and can include radial, loop, or networked structures to optimize performance.



## Main lines run separately to distribution boxes

---



### Insights on Transmission and Distribution Lines , Beca

So, let's take a closer look at the main components that bring power to your home or business. These feature a grid with transmission lines and distribution networks

[Contact Us](#)

### The Power Distribution Grid

At the bus, there may be two separate sets of distribution lines at two different voltages. Smaller transformers attached to the bus step the power down to

[Contact Us](#)



### Distribution Lines: The Backbone of Power Delivery -

Learn about the importance of distribution lines in the power delivery network. Discover their role in ensuring reliable energy supply to homes and businesses.

[Contact Us](#)

### ELECTRICAL DISTRIBUTION SYSTEMS (15A02701)

Fig. (i) shows a single line diagram of a radial system for d.c. distribution where a feeder OC supplies a distributor AB at point A. distributor is fed at one end only i.e., point A is this case.



## COMPONENTS OF DISTRIBUTION SYSTEM

In general, the distribution system is the electrical system between the sub-station fed by the transmission system and the consumers meters. It generally consists of feeders, distributors and the

[Contact Us](#)



## How to Install a Cable Distribution Box Safely and

In modern electrical systems, cable distribution boxes (also known as electrical distribution boxes or distribution boxes) play a crucial role as the key

[Contact Us](#)



## Ring Main Distribution with RMU: Power Systems

Ring Main Distribution is used to provide reliable supply to the consumers. Ring Main Units are interconnected in the form of loop to form Ring

[Contact Us](#)





## Understanding Circuit Breaker Wiring Configurations in

Messy distribution boxes are dangerous and very hard to fix. This guide shows you how to organize circuit breaker wiring properly. You will learn to build a safe,

[Contact Us](#)



## Welcome to the Sciences at Smith College

In this case, the bus distributes power to two separate sets of distribution lines at two different voltages. The smaller transformers attached to the bus are stepping the

[Contact Us](#)

## 10 Distribution Board Types Explained [May 2026 ]

Discover 10 types of distribution boards, from Main Distribution Boards to Fuse Boxes. Learn about their features, and applications,

[Contact Us](#)



## Single Phase Distribution Box Definition and Main Parts

A single phase distribution box controls and protects home or office circuits. Learn its definition, main parts, and how it ensures electrical safety.

[Contact Us](#)



## Important Primary Distribution System Considerations

These feeders include the primary feeder main or main feeder, usually a three-phase, four-wire circuit, and branches or laterals, which can be either

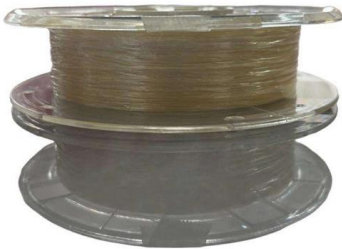
[Contact Us](#)



## Distribution Boxes: Types and Functions

Learn what an electrical distribution box (DB/distribution board) is, its main components (MCB/RCCB/RCBO, SPD, busbar) and common types.

[Contact Us](#)



## Understanding Distribution Boxes: Your Guide to Power

Weatherproof Distribution Boxes These serve specific outdoor purposes, with rain, dust, and extreme temperatures sealed shut, protecting any

[Contact Us](#)



## Understanding Branch Lines vs. Main Lines in Your

Consider using corrosion-resistant materials for main lines and branch lines in areas prone to aggressive soil conditions or high mineral content

[Contact Us](#)





## Electric power distribution

OverviewHistoryGeneration and transmissionPrimary distributionSecondary distributionModern distribution systemsSee alsoExternal links

Electric power distribution is the final stage in the delivery of electricity. Electricity is carried from the transmission system to individual consumers. Distribution substations connect to the transmission system and lower the transmission voltage to medium voltage ranging between 2 kV and 33 kV with the use of transformers. Primary distribution lines carry this medium voltage power to distribution transformers located

[Contact Us](#)



## Radial And Ring Main Power Distribution Systems: What

A SIMPLE explanation of Radial & Ring Main Power Distribution Systems. Learn what a Radial & Ring Main Power Distribution Systems are, the

[Contact Us](#)



## Electric Power Distribution Systems

There are basically two major types of distribution substations: primary substation and customer substation. The primary substation serves as a load center and the customer substation interfaces to

[Contact Us](#)



## Distribution Automation Handbook

One bay unit includes circuit breaker, disconnect(s), measuring transformers and the local control and interface cabinet in one transportation unit. The unit has been factory-assembled and tested, offering



[Contact Us](#)



### **The Meaning and Function of Primary, Secondary, and Tertiary**

A newly constructed residential area introduces a 10kV power line to a substation. From the transformer's low-voltage side (0.4kV), power is distributed to a main distribution panel (primary

[Contact Us](#)



### **A Complete Guide to LV Distribution Board , CHINT global**

LV distribution boards, part of the electrical distribution system, securely distribute low-voltage power to facility circuits.

[Contact Us](#)

### **Low-voltage distribution networks**

The distribution is effectively carried out at medium voltage in a way, which again differs from standard European practices. The MV system is, in fact, a 3-phase 4-wire system from which

[Contact Us](#)





## Layout of Feeder , Radial, Parallel, Ring Main and Interconnected



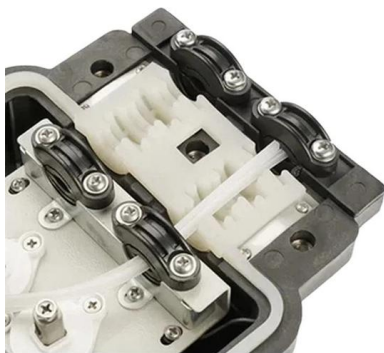
A primary feeder arrangement is the configuration of main power lines that distribute electricity from substations to various distribution points. It ensures efficient, reliable delivery to end users and can

[Contact Us](#)

## The Primary and Secondary distribution in electrical

The main supply panel mostly and mainly located closest to or in the direct vicinity of the (MV/LV) Transformer. If the building is big enough or the

[Contact Us](#)



## Understanding Distribution Boxes: A Comprehensive Guide

Distribution box What Is a Distribution Box Used For A distribution box is used to receive electrical power from a main supply and distribute it to

[Contact Us](#)

## Distribution Box: Types and Functions , Axis-Electricals

A distribution box ensures that electrical supply is distributed in the building, also known as a distribution board, panel board, breaker panel, or electric panel.

[Contact Us](#)





## Primary substations and bus layouts in the distribution

Primary Distribution Systems The primary distribution system of an industrial plant is generally the higher voltage portion of the system, starting with

[Contact Us](#)



### 10.1 Introduction to the Distribution System

Bus or busbar - common electrical term, meaning a piece of metal, typically copper or aluminum, used to route electric power from incoming feeders and distribute it to outgoing feeders.

[Contact Us](#)



## Contact Us

---

For datasheets, pricing, or custom fiber access solutions, please visit:  
<https://frindel.es>