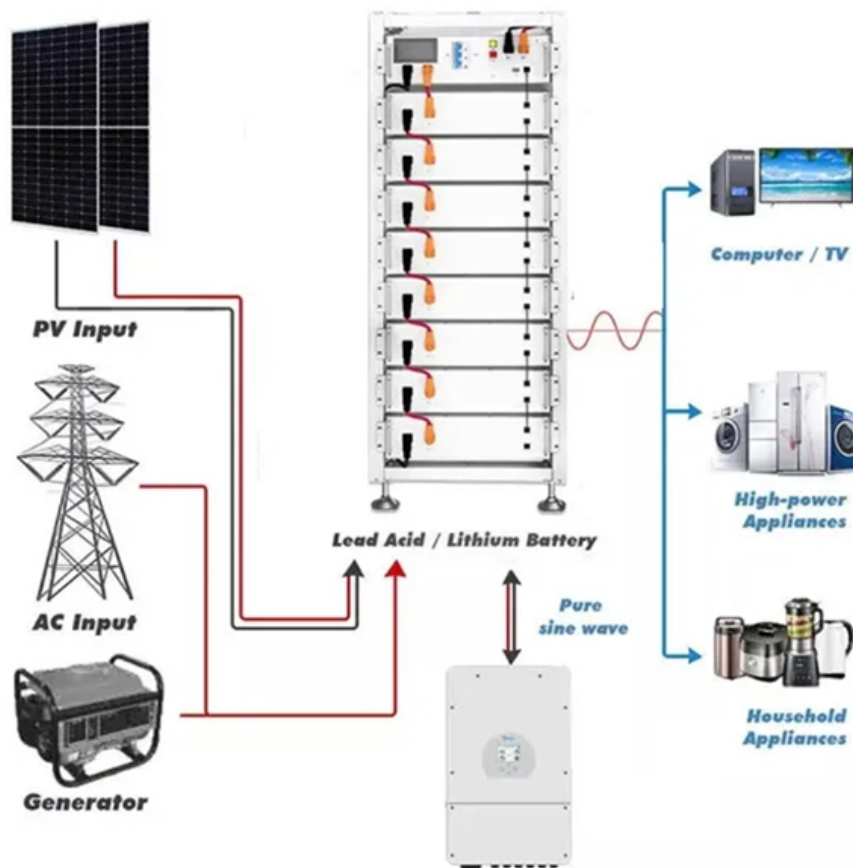


Main leakage protection device in distribution box





Overview

Many modern distribution boxes include a life-saving device called an Earth Leakage Circuit Breaker (ELCB) or Residual Current Device (RCD). It detects tiny imbalances in current that could be flowing through a person (electric shock) and cuts power in a fraction of a second. The type of earth leakage protection device to be used in each case, its sensitivity, and its location in the distribution diagram.



Main leakage protection device in distribution box



Safety requirements of distribution box

The distribution box has the characteristics of small size, simple installation, special technical performance, fixed location, unique configuration function, not limited by

[Contact Us](#)

Development of a New Type of Leakage Current Protection Device for

With the rapid development of electric vehicles, distributed photovoltaic power generation, and user energy storage, there are more and more DC leakage scenario

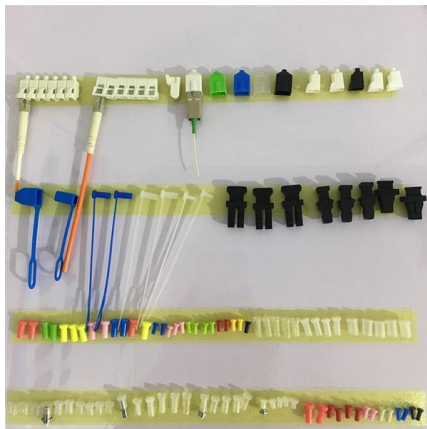
[Contact Us](#)



Development of a New Type of Leakage Current Protection Device for

With the rapid development of electric vehicles, distributed photovoltaic power generation, and user energy storage, there are more and more DC leakage scenarios in low-voltage distribution systems.

[Contact Us](#)



Modular leakage relays , installed in electrical distribution boxes

Modular leakage relays effectively detect leakage currents that may arise from damaged insulated wires or other faults. They act as protective devices that disconnect the power supply when a leakage



Distribution Boards

Distribution boards, often referred to as electrical panels or breaker boxes, serve as the nerve center of any electrical system. Here we explore the crucial parts of a distribution board and gain insights into

[Contact Us](#)



Wiring for the activation of leakage protection

Connect the live wire from the distribution box to the L terminal and the neutral wire to the N terminal. When wiring, make sure the stripped length of the wire is appropriate.

[Contact Us](#)



How to wire a distribution board with all loads protected by earth

This is a lab setup for the practical demonstration of wiring a distribution board with several loads - lights, geyser, and plugs. Loads protected by earth leakage with over current circuit

[Contact Us](#)

Installation of leakage protection device



Leakage protection device, also known as leakage protector, refers to a device that can automatically disconnect the circuit or send out an alarm signal

[Contact Us](#)



Surge Protection for Main Distributions

Learn about surge protection for main distributions, essential for safeguarding your electrical system from voltage spikes. Explore types of

[Contact Us](#)



SAFEHOUSE GUIDE TO DISTRIBUTION BOARDS,

An earth leakage unit is a device that can detect small imbalances between the earth conductors and the supply, indicating leakage of electricity

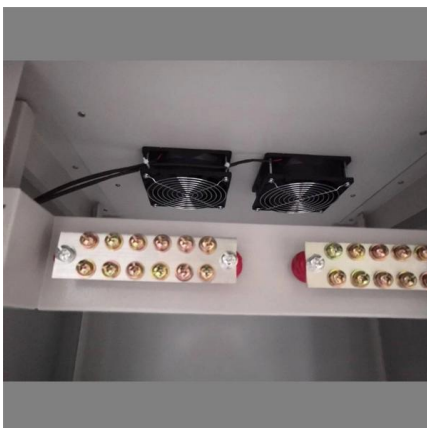
[Contact Us](#)



Explore Power Distribution Box Types and Functions

Electrical distribution boxes are used in commercial and residential buildings and are part of the electrical system, also known as switchboards. It

[Contact Us](#)





Earth Leakage Protection: ELCB vs RCD vs RCBO

This guide explains the differences between ELCBs, RCDs, and RCBOs, their working principles, advantages, and applications to help you

[Contact Us](#)



Distribution Box Guide: Types, Components & Solutions

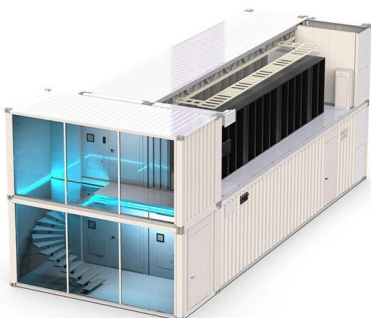
Understand distribution boxes (DB boxes) in 5 minutes. Learn about types, components, functions, and uses. Find the perfect DB box for your needs.

[Contact Us](#)

Distribution Board Types & SPD Protection: The

Explore distribution board types and features. Find the right one for your needs and see how SPD devices protect against surges for lasting performance.

[Contact Us](#)



4 crucial devices used for distribution system protection

Protection of distribution networks A wide variety of equipment is used to protect distribution networks. The particular type of protection used depends on

[Contact Us](#)



Understanding Distribution Boxes: A Comprehensive Guide

The right distribution box depends on the installation environment, protection level, load requirements, and application type. By understanding the

[Contact Us](#)



Distribution Box: Types and Functions , Axis-Electricals

A distribution box houses all the contact breakers, earth leakage units, doorbells, and timers. The electrical power supply comes from the network to the building

[Contact Us](#)

earth leakage protection selection .pdf

The following table gives a reminder of: The circuits that must be protected against these various risks (obligation or recommendation). The type of earth leakage protection device to be used in each case,

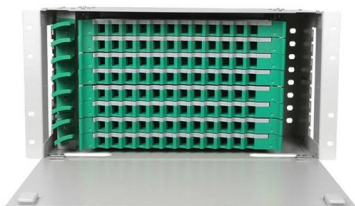
[Contact Us](#)



Why earth leakage protection is necessary in low

It's important to note that the overcurrent protective device will not operate in the event of somebody making direct contact with a live conductor.

[Contact Us](#)

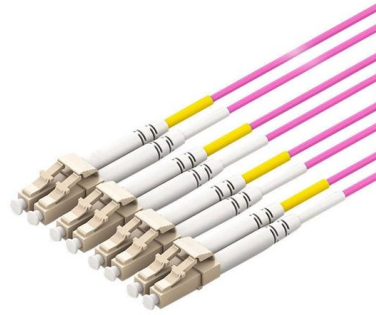




Principle and function of leakage protection switch for low voltage

The leakage protection switch of Small Power Distribution Board not only has the leakage protection function, but also is the main function of the leakage protector to ensure personal safety by tripping

[Contact Us](#)



Discussion on Leakage Protection in Distribution Network

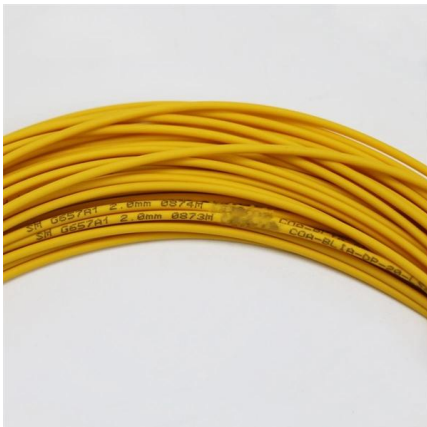
First of all, the leakage protection is systematically analyzed, then the correct use of leakage protection in distribution network is studied.

[Contact Us](#)

Ground Fault Protection at the Distribution Panel

If the insulation of each element begins to deteriorate and starts to pass small amounts of current to ground, the relay installed at the main panel will detect the

[Contact Us](#)



Earth leakage devices

Earth leakage devices - Explained What is an RCD? RCD (Residual Current Device) is a generic term describing a range of protective devices designed to detect and respond to earth leakage currents.

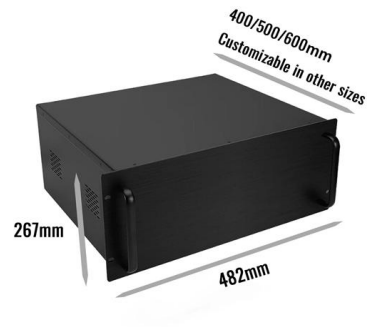
[Contact Us](#)



Distribution Boxes: Types and Functions

A distribution box (distribution board/DB box) distributes incoming power to multiple circuits and typically houses protective devices such as

[Contact Us](#)



What is the function of a distribution box?

Many modern distribution boxes include a life-saving device called an Earth Leakage Circuit Breaker (ELCB) or Residual Current Device (RCD). It detects tiny imbalances in current that

[Contact Us](#)

Leakage protector structure principle

The leakage protection device in the low-voltage distribution system is one of the effective measures to prevent personal electric shock accidents, and it is also a technical measure to prevent electric fire

[Contact Us](#)



Contact Us

For datasheets, pricing, or custom fiber access solutions, please visit:
<https://frindel.es>