

Main Materials of Cable Tray Supports





Main Materials of Cable Tray Supports

B-Line series Cable Tray Design Considerations



Our wind certification report provides you with list of acceptable B-Line series cable tray supports, fittings and covers based off of the environmental conditions, cable loading, and type of cable tray in your

[Contact Us](#)

What Is Cable Tray (Purpose, Materials And Applications)

What is cable tray? Learn about its types, uses in industries, safety benefits, and how it organizes and supports cables in various environments.

[Contact Us](#)



What Is a Cable Tray? Types, Materials, and Uses

A cable tray is a structured mechanical support system used in the electrical wiring of buildings and other structures to organize and secure insulated power, control, and communication

[Contact Us](#)



Cable Tray Types and Sizes

What is Cable Tray Systems? An electrical cable tray is a type of containment system used to support insulated electrical cables for power distribution, control,

[Contact Us](#)



100+ Essential Questions Answered About Cable Trays:

Discover over 100 expert answers about cable trays, covering key topics like material selection, load capacity, installation methods, and maintenance.

[Contact Us](#)

Types of Cable Trays: Benefits and Uses

Different types of cable trays offer key benefits, optimizing cable management and enhancing efficiency in electrical systems.

[Contact Us](#)



What Is A Cable Tray? 5 Types Of Cable Trays

A cable tray is a structural system used to support and manage electrical cables in various settings, such as industrial, commercial, and residential environments.

[Contact Us](#)





Ultimate Guide to Cable Tray Selection - Types,

Learn how to choose the best cable tray system for your needs. Explore types, materials, installation tips, and NEC compliance in this expert guide.

[Contact Us](#)



Types of Cable Trays: Ladder, Perforated, Basket, Solid

Explore all types of cable trays--ladder, perforated, basket, solid, and channel. Learn their uses, materials, pros, cons, and key differences.

[Contact Us](#)

What are Cable Trays & Different Types of Cable Trays

Learn what cable trays are & explore the various types, benefits, and purposes. Gain insights into how electrical cable trays can revolutionize your

[Contact Us](#)



What Is a Cable Tray? Types, Materials, and Uses

Galvanized steel is the standard for general industrial use, offering high strength and corrosion resistance due to its zinc coating. Aluminum is lighter and naturally corrosion-resistant,

[Contact Us](#)

Introduction: Cable Tray Materials



Cable Tray Materials: Most cable tray systems are fabricated from a corrosion-resistant metal (low-carbon steel, stainless steel or an aluminium alloy) or from a metal with a corrosion-resistant

[Contact Us](#)



Guide to cable support systems

In addition, a cable support system can be used to separate and arrange cables in groups. The systems are installed on ceilings, walls or floors. The material of a cable support system is normally steel or

[Contact Us](#)



Comparing Electrical Cable Tray Materials- Aluminium,

Aluminium, steel, or plastic? Compare key features of electrical cable tray materials to find perfect match for your building's requirements.

[Contact Us](#)



Cable Tray Systems Explained: The Right Solution for

Discover cable tray systems, including tray types, sizes, duty ratings and materials, and learn how to choose the right solution for safe cable management.

[Contact Us](#)

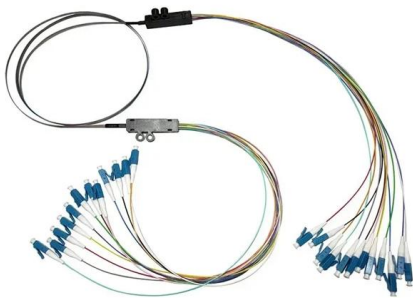


HOW TO CHOOSE THE RIGHT CABLE TRAY



A cable tray is a system used to support and route cables and wiring in an industrial environment. Cable trays are used in various installations, including commercial construction, data centers, computer

[Contact Us](#)



Types of Cable Trays - Purpose, Advantages,

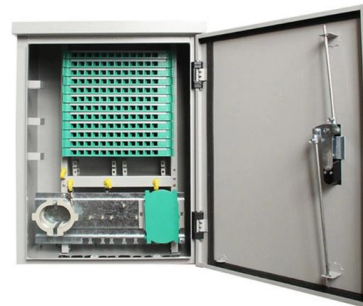
Cable tray is alternatives to wire ways and electrical conduits, which completely enclose cables. Study types of cable trays, purpose, advantages.

[Contact Us](#)

Cable Tray Systems: Requirements and Best Practices

Comprehensive guide to cable tray systems requirements: tray types, materials, loading, supports, bonding, routing, and best practices for safe electrical cable management.

[Contact Us](#)



Cable Tray Support: Rod vs. Angle Steel

Learn about the different types of cable tray support, including rod supports and angle steel supports, and how to choose the right one for your

[Contact Us](#)



A Guide to Cable Tray Accessories and Their Functions

Explore a detailed guide to cable tray accessories and understand their uses in ensuring safety, stability, and efficiency in electrical system

[Contact Us](#)



Cable Tray

Cable Tray Cable trays are mechanical support systems that provide a rigid structural system for electrical cables, raceways, and insulated conductors used

[Contact Us](#)

Type of Cable Tray

Cable Tray Materials: Most cable tray systems are fabricated from a corrosion-resistant metal (low-carbon steel, stainless steel or an aluminium alloy) or from a metal with a corrosion-resistant finish



[Contact Us](#)



Cablofil 316L Stainless Steel Wire Cable Tray Support Rail 400mm

316L stainless steel S-profile support rail for wire cable tray installations. Back perforated design provides flexible fixing with high corrosion resistance and 1 kN load capacity.

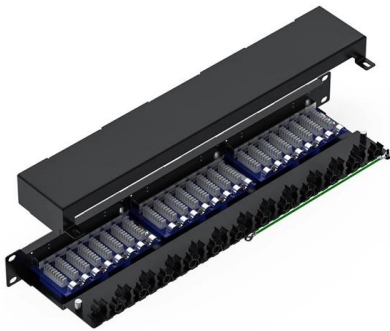
[Contact Us](#)



Cable Tray Technical Guide A practical guide to product selection and

In designing supports for a cable tray system, consideration should be given to the loads associated with future cable additions and any additional loading that may be applied to the cable tray system (e.g.,

[Contact Us](#)



B-Line series Cable Tray Design Considerations

As an industry leader in cable tray, Eaton offers one of the widest ranges of cable management solutions available in the market today with its B-Line series portfolio. With unmatched quality and service, we

[Contact Us](#)

Complete Guide to Cable Tray Types: Materials, Configurations

Discover comprehensive information about what are the types of cable tray available, including materials, configurations, load capacities, and applications for optimal electrical infrastructure planning.

[Contact Us](#)



Guide to cable support systems

I support systems for cable support structures are used to bridge large loads and support spacings and to cre-ate complex section routes. The systems allow large sup-port spacings of wide span systems

[Contact Us](#)





Contact Us

For datasheets, pricing, or custom fiber access solutions, please visit:
<https://frindel.es>