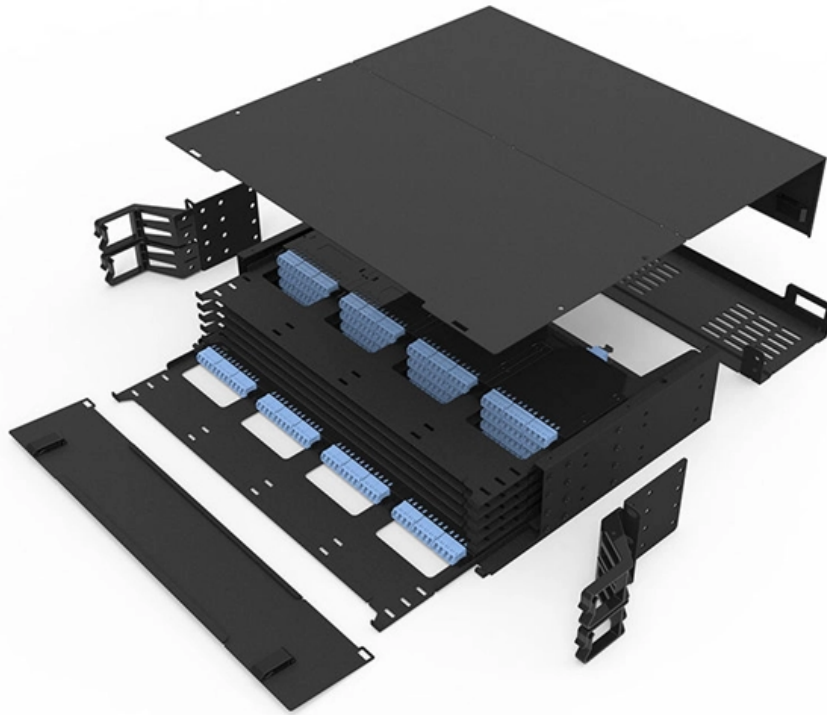


# **Low-voltage wiring does not require cable trays**





## Overview

---

Unlike high-voltage wiring that is typically enclosed in walls or conduit, low-voltage systems often run in dedicated cable trays or open spaces. Proper cable organization helps prevent interference, signal loss, and maintenance issues down the road. Standard power outlets in the United States and Canada carry 120V, and most lighting fixtures, electronics, and devices draw up to 120V. PLTC-type cable is suitable for various applications and is commonly referred to as an "everything cable. Low-voltage wiring refers to electrical systems that operate at about  $\approx 50$  volts or less, designed to safely power and connect devices such as security cameras, thermostats, doorbells, lighting controls, and home networks. The mechanical and electrical characteristics, tests, certifications, overall quality management, recommendations mentioned in this technical guide only apply to our own cable management ranges and cannot under any circumstances be transposed to si osure, overheating or.



## Low-voltage wiring does not require cable trays

---

### GUIDE CABLE TRAYS TECHNICAL



NEMA VE 1-2017 Specifies requirements for metal cable trays and associated fittings designed for use in accordance with the rules of Canadian Electrical Code, Part I and the National Electrical Code®

[Contact Us](#)

### Cable Tray Technical Guide A practical guide to product selection and

Cable Tray Technical Guide A practical guide to product selection and installation This guide for engineers and installers has been developed by ABB as a practical reference regarding cable tray

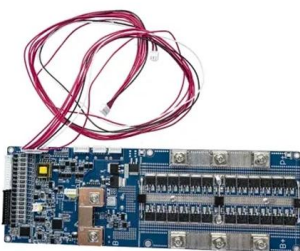
[Contact Us](#)



### Low Voltage Conduit Guide: Types, Installation & Safety

These include signal, control, communication, and data cables -- rather than power-distribution conductors. Typical examples are ethernet cables,

[Contact Us](#)



### Understanding NFPA 70 NEC Standards for Low

When working with low voltage cabling, contractors and electricians frequently encounter various compliance issues related to the National Electrical Code

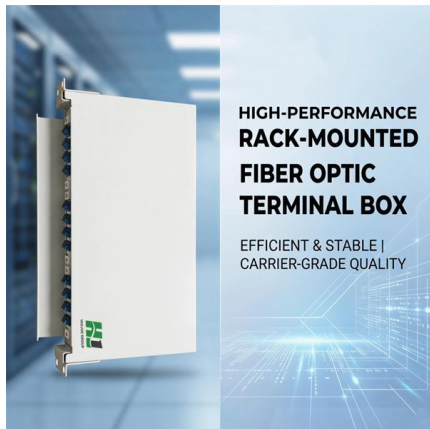




## NFPA 70 (NEC 2026): The Shift to Limited Energy Systems

Does NEC 2026 change listing compatibility requirements for mixed-voltage trays, enclosures, and cable assemblies? Compatibility expectations are

[Contact Us](#)



## Low Voltage Installation: Wiring & Cabling Full Guide

Low voltage wiring systems are essential for modern businesses seeking fast, reliable connections that traditional electrical systems can't provide.

[Contact Us](#)

## Does Low Voltage Wiring Need to Be in Conduit?

In the intricate world of electrical wiring, the question of whether low-voltage wiring needs conduit sparks a debate among electricians and homeowners alike. This

[Contact Us](#)



## Low Voltage Cable Technician Jobs in East Hartford, CT

Browse 702 EAST HARTFORD, CT LOW VOLTAGE CABLE TECHNICIAN jobs (\$19-\$33/hr) from employers hiring now. Find openings near you & 1-click apply today!

[Contact Us](#)



## Cable Tray Grounding: Power,



## Instrumentation, and

Cable tray systems are not required to be mechanically continuous, but shall be electrically continuous. Cable trays are also bonded to conduit, cable channel or other wiring drops. They must also be

[Contact Us](#)



## A Guide to Installing and Supporting Electrical Cable Trays

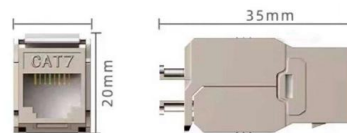
A professional guide to installing electrical cable tray systems per NEC Article 392. Covers support, securing cables, and fill calculations.

[Contact Us](#)

## White Paper #2402 Comparing Cable Tray and Cable Bus for Power

Limited Mechanical Protection: Cable trays do not provide the same level of physical protection as cable bus systems, making them less suitable for harsh environments or areas with high risk of physical

[Contact Us](#)



## NFPA 70 and Low Voltage Systems , National Training

Coaxial cable is typically CM-type, making it suitable for most low-voltage applications. A power-limited tray cable (PLTC) is covered by Article 725 and is a

[Contact Us](#)



## Low Voltage Conduit Guide: Types,



## Installation & Safety

Learn what low voltage conduit is, when to use it, and which type fits your project. Expert tips on materials, installation, and NEC safety compliance.

[Contact Us](#)



## NEC 2023 Basics: Sizing Equipment Grounding

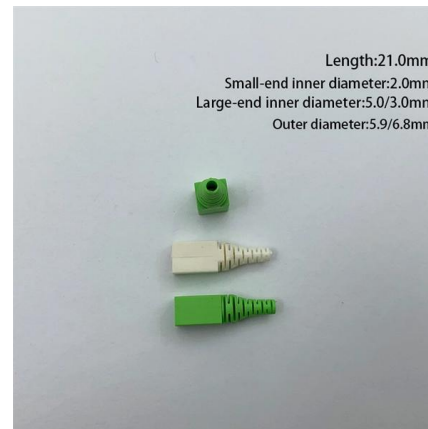
Employing a conductor size larger than the circuit conductors is unnecessary. Install cable trays, raceways, and cable armors or sheaths to

[Contact Us](#)

## Cable trays are structural components of a facility's electrical system

When properly planned, installed, and serviced, cable trays provide safe routing of power, low voltage control, data, and telecommunications wiring. Cables in these trays are easy to mark, find, and remove.

[Contact Us](#)



## Installation Of Cable In Cable Trays: NEC, Safety

Installation of Cable in Cable Trays ensures proper routing, cable management, NEC compliance, grounding, fire safety, and load capacity.

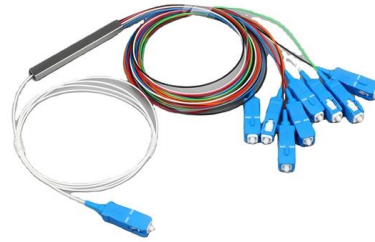
[Contact Us](#)



## SS304 Cable Tray Price

Discover SS304 cable tray prices for durable wire mesh & ladder trays. Ideal for industrial cable management, CE certified, customizable sizes.

[Contact Us](#)



## NFPA NEC 70 Fire Alarm System Wiring: Ensuring

Standard low-voltage wire, such as that used for doorbells or intercoms, does not possess the necessary flame resistance and circuit integrity

[Contact Us](#)

## Low Voltage Wiring: Complete Guide (Types, Costs & Code) 2026

Whether you're planning a DIY upgrade or hiring professionals, this guide breaks down the key concepts, wiring types,

[Contact Us](#)



## Cable Tray Questions , Cable Tray Institute

Our existing cable tray system is heavy bonded and grounded. If this is a code violation, could you refer me to the publication? Answer: Low energy systems may not be required to be grounded for shock

[Contact Us](#)



## Low-Voltage vs. Traditional Electrical Wiring

Unlike high-voltage wiring that is typically enclosed in walls or conduit, low-voltage systems often run in dedicated cable trays or open spaces. Proper cable

[Contact Us](#)



## Contact Us

---

For datasheets, pricing, or custom fiber access solutions, please visit:  
<https://frindel.es>