

Looking for Huawei optical-to-electrical converter modules





Looking for Huawei optical-to-electrical converter modules



Huawei Optical Modules and Cables

Buy Genuine Huawei Optical Modules and Cables from GenuineModules with best price and fast worldwide shipping.

[Contact Us](#)

01-10 OPTICAL MODULES

Huawei S series devices support optical modules of the following encapsulation types: CFP, QSFP+, QSFP28, XFP, SFP, eSFP, and SFP+. All optical modules are hot swappable. SFP: small form

[Contact Us](#)



Huawei Unveils StarryLink Optical Modules That Deliver

Looking ahead, Huawei aims to collaborate with industry partners to further research and innovate in data center network optical modules, promoting

[Contact Us](#)

Huawei Optical Modules 1000BASE-T SFP Module, RJ45 Electrical

The Huawei Optical Modules 1000BASE T SFP Module, RJ45 Electrical Module, is a high performance networking component designed for use in Huawei's networking equipment.



1 Gbit/s SFP Optical/Electrical Modules

1 Gbit/s SFP optical/electrical module apply to GE interfaces for interconnection between GE optical and electrical interfaces. SFP-1000BaseT

[Contact Us](#)



Huawei Campus Optical Module Portfolio

In addition to the optical-to-electrical conversion function, the optical forwarding module integrates many signal processing functions, such as MUX/DEMUX, CDR, function control, performance data

[Contact Us](#)



02310RAV Huawei Network Accessories Shop Now

Buy 02310RAV Huawei Optical Functional Module 1000BASE-T-SFP Module RJ45 Electrical Module Auto Negotiate Longest Transimission Distance 100m with fast and free shipping from

[Contact Us](#)





Optical/Electrical Module

You can use different levels of 10 Gbit/s XFP optical modules with OC-192/STM-64 POS interfaces and 10 GE interfaces. The wavelength of these 10 Gbit/s XFP optical modules can be 850

[Contact Us](#)



Huawei Data Center Switch Optical Transceiver Portfolio

Huawei Data Center Switch Optical Transceiver Portfolio QSFP28 MPO12 Connector Model

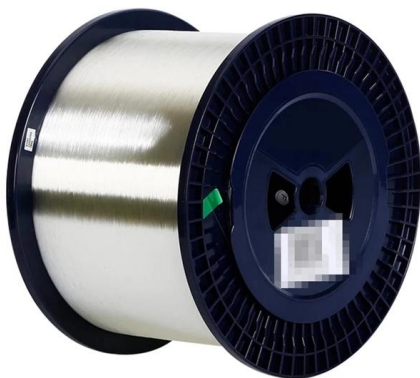
[Contact Us](#)



N7005A 60 GHz Optical-to-Electrical Converter , Keysight

The Keysight N7005A Optical-to-Electrical Converter is a high-sensitivity photodetector module designed for direct optical-to-electrical conversion of

[Contact Us](#)



Huawei OEGD01N01 1000BASE-T RJ45 SFP Optical

Understanding Optical Modules

On an optical network, a sender needs to convert electrical signals into optical signals before sending them to a receiver, and the receiver needs to convert received optical signals into

[Contact Us](#)



It is a 1000BASE-T-SFP Module featuring an RJ45 Electrical Module with auto-negotiation capabilities. Designed for optimal performance, it supports a longest

[Contact Us](#)



- IP65/IP55 OUTDOOR CABINET
- ALUMINUM
- OUTDOOR ENERGY STORAGE CABINET
- OUTDOOR EQUIPMENT CABINET

Types of Optical Modules

Therefore, when using such optical modules, select optical fibers of an appropriate length to ensure that the actual receive power is smaller than the overload power. If the optical fibers connected to a long

[Contact Us](#)

Huawei Compatible Transceivers , EDGE Optical Solutions

We are a supplier of compatible Huawei optical transceiver products that are built to meet reliability and performance requirements. Compatible Huawei transceiver products are widely used among network

[Contact Us](#)



OPTICAL TO ELECTRICAL CONVERTER

Optical-to-Electrical Converter High bandwidth, broadband O-to-E converter. Available in a range of configurations; choose from 1 or 2 channels, AC or DC coupling and various conversion gain and

[Contact Us](#)



Optical/Electrical Module

10 Gbit/s XFP Optical Module You can use different levels of 10 Gbit/s XFP optical modules with OC-192/STM-64 POS interfaces and 10 GE interfaces. The wavelength of these 10

[Contact Us](#)



OPTICAL TO ELECTRICAL CONVERTER

The O2E is a high bandwidth, broadband optical to electrical converter available in a range of configurations.

[Contact Us](#)

OP710-ANX Multichannel Optical to Electrical Converter

The OP710-ANX incorporates individual channels of optical to electrical (O/E) converters and is an easy-to-implement multichannel O/E converter for

[Contact Us](#)



Optical Modules in General-Purpose Computing Scenarios

Huawei offers a comprehensive portfolio of pluggable StarryLink optical modules for data center networks, with various models providing flexible plug-and-play solutions tailored to diverse interface

[Contact Us](#)



Optical-to-Electrical Converters

O2E 1000-1400 Series Optical-to-Electrical Converters For measurements in laboratories and manufacturing, optical signals often need to be converted to

[Contact Us](#)



Huawei Unveils StarryLink Optical Modules That Deliver Ultimate

Looking ahead, Huawei aims to collaborate with industry partners to further research and innovate in data center network optical modules, promoting intelligent network upgrades and

[Contact Us](#)

Understanding Pluggable Optical Modules

Therefore, when using such optical modules, select optical fibers of an appropriate length to ensure that the actual receive power is smaller than the overload power. If the optical fibers connected to a long

[Contact Us](#)



SFP-1000BASET

SFP-1000BASET Huawei Copper Transceiver, SFP, GE, Electrical Interface Module (100m, RJ45)
Form Factor: SFP Data Rate: 1.25Gbps
Wavelength: No

[Contact Us](#)



Mixed-signal and digital signal processing ICs , Analog

Analog Devices is global leader in the design and manufacturing of analog, mixed signal, and DSP integrated circuits to help solve the toughest engineering

[Contact Us](#)



OPTICAL TO ELECTRICAL CONVERTER

Optical-to-Electrical Converter High bandwidth, broadband O-to-E converter. Available in a range of configurations; choose from 1 or 2 channels, AC or DC coupling and various conversion gain and

[Contact Us](#)

Huawei FE Optical Modules

Huawei SFP-FE-SX-MM1310 Optical Transceiver, SFP, 100M/155M, Multi-mode Module (1310nm, 2km, LC) 02315233

[Contact Us](#)



8 Pluggable Modules for Interfaces

To determine whether optical modules delivered for Huawei S switches before July 1, 2013 are certified ones, contact Huawei technical support. If your optical modules are delivered after July 1, 2013, use

[Contact Us](#)



Contact Us

For datasheets, pricing, or custom fiber access solutions, please visit:
<https://frindel.es>