

# Longitudinal cable tray with T-junction transverse cable tray





## Longitudinal cable tray with T-junction transverse cable tray

---



### **Cable Tray , Efficient & Organised Cable Management**

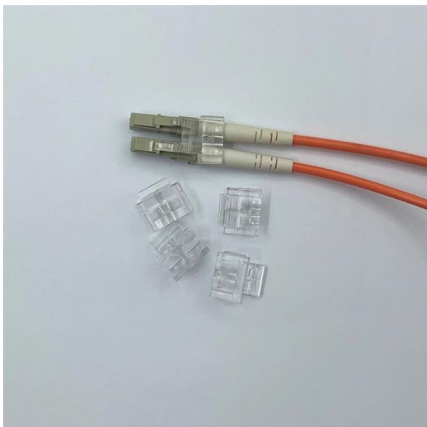
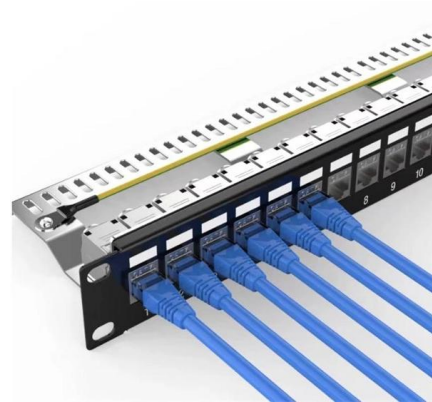
Ladder trays consist of two longitudinal side rails connected by a series of transverse members, resembling a ladder. Solid bottom trays have a flat base and are ideal for high-density cabling.

[Contact Us](#)

### **LADDER TYPE CABLE TRAYS , Hind Runway Systems**

These trays comprised of two longitudinal side rails connected by individual transverse members called rungs. Finish: Hot-dip galvanized, Redoxide, Enamel

[Contact Us](#)



### **THOMAS & BETTS CABLE TRAY SYSTEMS**

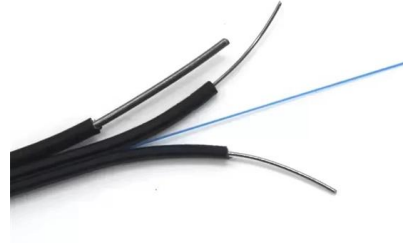
The Benefits of Cable Tray Cable tray wiring systems offer significant advantages over conduit pipe and other wiring systems. Cable tray is less expensive, more reliable, more adaptable to changing needs

[Contact Us](#)

### **Wire Mesh Cable Trays Technical Information Detailed,**

Wire Mesh Cable Tray Installation Notice: Bends, Risers, T Junctions, Crosses and Reducers can be made from wire mesh cable tray straight sections flexibly in

[Contact Us](#)



### **STANDARD PERFORATED CABLE TRAY**

Coupler Plate Used to join two cable trays in a straight line, ensuring proper alignment and structural continuity.

[Contact Us](#)



### **How to make a T-junction between two KRA/KRB cable trays?**

The T-branch bracket TKU is pushed inside the cable tray and attached with the included screw set. KRA/KRB cable tray with the bracket TKU attached is then placed on another cable tray.

[Contact Us](#)



### **Flat T-junction , BTicino International Product Catalogue**

List of products and article codes in the BTicino catalogue for metal cable tray systems , zf31 wire cable trays , flat t junction

[Contact Us](#)

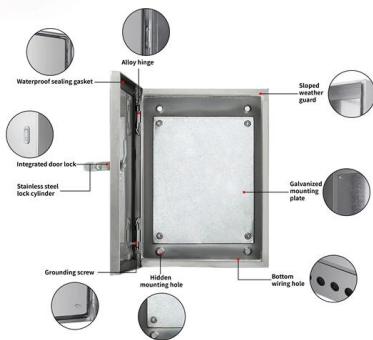




## Steel cable tray

Ventilated A fabricated structure consisting of integral or separate longitudinal rails and a bottom having openings sufficient for the passage of air and utilizing 75% or less of the plane area of the surface to

[Contact Us](#)



## Cable Tray

Cable Ladders Straight sections of ladder type cable trays consist of two longitudinal side rails, connected by individual transverse members, or rungs, which are welded to the side rails or bolted in

[Contact Us](#)

## Cable Tray T-Joint - Kim Long

The Cable Tray T-Joint is a durable and versatile accessory designed to connect cable trays at a 90-degree angle, allowing for organized and efficient routing of

[Contact Us](#)



## Metatray T-joint , PEMSA

## Cable Tray Design and Sizing Guide

The document discusses several key factors to consider when designing a cable tray system, including: 1) The width and height of the tray, type of tray bottom (ladder, ventilated, or solid), and type of

[Contact Us](#)



Fitting for the construction of T-joints or crossovers of Metatray® insulating trays for the conduction of electrical and telecommunication cables. Made of PVC-based

[Contact Us](#)



### Cable Management Systems

With no loss of functionality and reduced waste, our innovative design allows the tray to slide into the elbow, making cut-off ends reusable for seamless performance.

[Contact Us](#)



### Catalog Cable Tray Ver Final

Cable Ladders Straight sections of ladder type cable trays consist of two longitudinal side rails, connected by individual transverse members, or rungs, which are welded to the side rails or

[Contact Us](#)



### Cable Tray Selector

Ladder cable trays consist of two longitudinal side members connected by individual transverse members and provide solid side rail protection and system strength

[Contact Us](#)





## T-Junction Aluminum Cable Tray Ladder, 4" Depth x 6"

The Aluminum Cable Tray Ladder is a lightweight, durable solution designed to organize and support cables in industrial, commercial, and telecom installations.

[Contact Us](#)



## TERMS AND DEFINITIONS

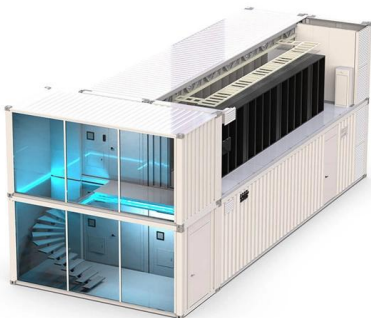
Ladder Type Cable Tray A pre-fabricated metal structure consisting of two longitudinal side rails connected by individual transverse members.

[Contact Us](#)

## GUIDE CABLE TRAYS TECHNICAL

In accordance with its continuous improvement policy, Legrand reserves the right to change the specifications and illustrations without notice. All illustrations, descriptions and technical information

[Contact Us](#)



## Catalog Cable Tray Ver Final

Straight sections of ladder type cable trays consist of two longitudinal side rails, connected by individual transverse members, or rungs, which are welded to the side rails or bolted in case of GI

[Contact Us](#)



## LEGRAND CABLE TRAYS TECHNICAL GUIDE

Not all cable trays are equivalent. The mechanical and electrical characteristics, tests, certifications, overall quality management, recommendations mentioned in this technical guide only apply to our

[Contact Us](#)



### Wire Mesh Cable Tray with a T Junction - Multi Task

The Wire Mesh Cable Tray with a T Junction is essential for maintaining the integrity and safety of complex cable systems. Its sturdy construction, ease of installation,

[Contact Us](#)



### Product Catalogue Cable Management Solutions

With over 20 years of experience T& B Cable Tray provides a complete solution in cable management systems including design, manufacturing and technical support by offering a complete solution for

[Contact Us](#)



### Cable Tray T-piece , Trayco

Characteristic of this steel type is that - prior to mechanical deformation - it is given a zinc coating by means of a continuous dipping process. This zinc coating is

[Contact Us](#)





## Contact Us

---

For datasheets, pricing, or custom fiber access solutions, please visit:  
<https://frindel.es>