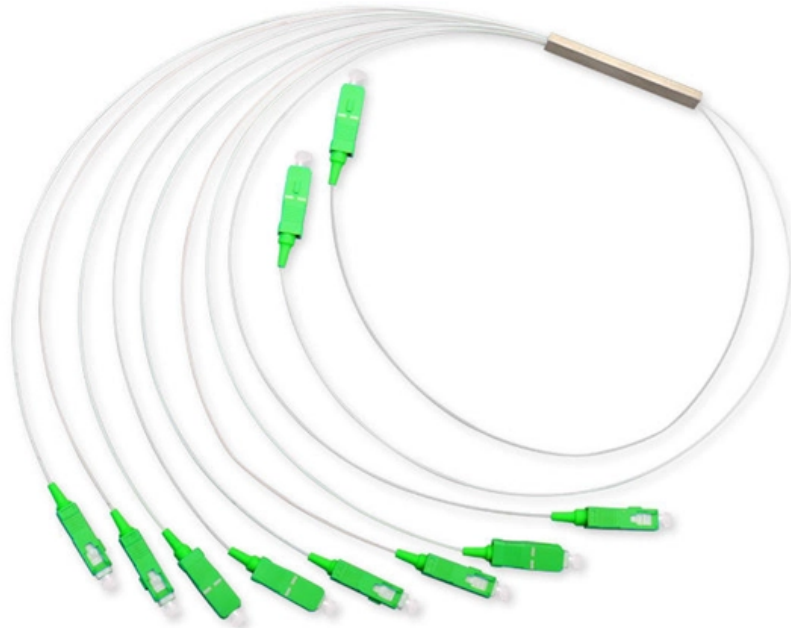


Light Island Bus Module





Overview

IBE •Expand island bus to a distance of up to 2 x 200 meters •Compact design per DIN 43 880, requires little space •Easy installation and setup –Mounted on standard rails –Self-connecting bus (island bus) for the easiest possible. Only the symbols on the nameplate of the product indicate which regulations and certification requirements the product conforms with. The island bus expansion modules allow for "decentralized" sub-islands with TX-I/O-modules, that may be located up to 2 x 200 m from the "local" sub-island. The DIP switches for the bus master and bus terminator must be set correctly on the.



Light Island Bus Module



TXA1.IBE Siemens o Shop o Stuhr HVAC Components

TXA1.IBE Siemens - Island bus expansion module for decentralized sub-islands

[Contact Us](#)

Traffic islands

Modular traffic island made from recycled plastic, available in black or red. Easy to install, with reflective markings and optional bollards for added safety.

[Contact Us](#)



TXA1.IBE island bus expansion module

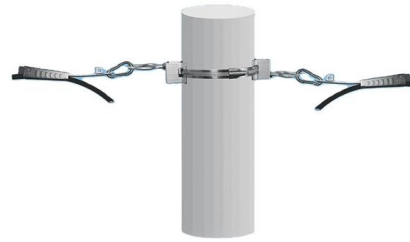
The island bus expansion module is plugged on the right side of the power module / bus connection module on the standard rail. The electrical connection is on the 4 side island bus contacts.

[Contact Us](#)

Minecraft

Hier sollte eine Beschreibung angezeigt werden, diese Seite lässt dies jedoch nicht zu.

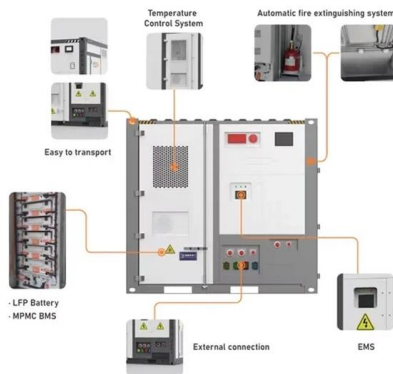
[Contact Us](#)



TeSys island Concept

TeSys island is a modular, multifunctional system providing integrated functions inside an automation architecture, primarily for the direct control and management of low-voltage loads. TeSys island can

[Contact Us](#)



TeSys Active TeSys island Digital Motor Management Solution

TeSys island is a modular, multifunctional system providing integrated functions inside an automation architecture, primarily for the direct control and management of low-voltage loads.

[Contact Us](#)



TXA1.IBE island bus expansion module

o The DIP switches for the bus master and bus terminator must be set correctly on the island bus expansion modules.
o The island bus expansion is based on differential RS-485

[Contact Us](#)





TXA1.IBE Siemens o Shop o Stuhr HVAC Components

TXA1.IBE Siemens Island bus expansion module for decentralized sub-islands with TX-I/O-modules
Manufacturer article number: BPZ:TXA1.IBE
Condition: New

[Contact Us](#)



TXA1.IBE island bus expansion module

The island bus expansion module is plugged on the right side of the power module / bus connection module on the standard rail. The electrical connection is on the 4 side island bus contacts. The bus

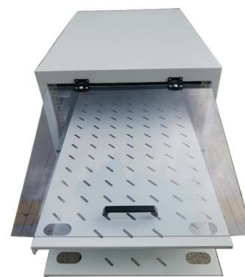
[Contact Us](#)



A6V10227710

The document describes an island bus expansion module that allows expansion of an island bus to a distance of up to 2 x 200 meters from the local sub-island. It

[Contact Us](#)



Island bus expansion module TXA1.IBE

A6V10227710_en.pdf Product Family TX-I/O
Design Room Automation Product Group I/O
Modules Building automation Content Language
English Content Type Technical Documentation

[Contact Us](#)





TeSys island Load Management System

TeSys island is a modular, multifunctional system providing integrated functions inside an automation architecture, primarily for the direct control and management of low-voltage loads. TeSys island can

[Contact Us](#)



SIEMENS TXA1.IBE Island bus expansion Module

The TXA1.IBE is a compact module that is easy to install and use. It features an LED for communication status indication and does not require any programming or parameterization tools.

[Contact Us](#)



Lighting Control

ABB i-bus® KNX ensures optimum lighting of industrial and office buildings as well as private dwellings. The illuminance is monitored and remotely controlled depending on the lighting requirements.

[Contact Us](#)



TX-I/O Power Supply and Bus Modules

Island Bus Expansion Module The TX-I/O Island Bus Expansion (IBE) module increases the distance between the primary field panel enclosure and expansion field panel enclosures on the island bus.

[Contact Us](#)

TeSys island



TeSys island is a modular, multifunctional system providing integrated functions inside an automation architecture, primarily for the direct control and management of low-voltage loads. TeSys island can

[Contact Us](#)



TXA1.IBE island bus expansion module

An island bus expansion module can be placed anywhere in the I/O row. Mounting o For signal quality reasons, however, the best place is directly after the supplying device (automations

[Contact Us](#)

Island bus expansion module TXA1.IBE

Building Technologies Building automation systems TALON System Automation controls I/O Solutions Accessories Building Technologies Building automation systems Desigo Automation controls and

[Contact Us](#)



Siemens TXA1.IBE, Island Bus Expansion Module

This Siemens module connects and expands the communication network between intelligent building devices. It facilitates data transfer and coordination among various system components, enhancing

[Contact Us](#)



TXA1.IBE island bus expansion module

The island bus expansion module is plugged on the right side of the power module / bus connection module on the standard rail. The electrical connection is on the 4 side island bus contacts. The bus

[Contact Us](#)



Island bus expansion module TXA1.IBE

Bus connection / expansion for TXM.. Personalization saves you typing! If you have already been registered, you can login directly. If you are not registered yet, you can inform and register yourself

[Contact Us](#)

Siemens Product Information

Only the symbols on the nameplate of the product indicate which regulations and certification requirements the product conforms with.

[Contact Us](#)



TX-I/O Product Range Technical Specification Sheet

The IBE converts the TX-I/O island bus signal on the self-forming rail to an RS-485 signal level on the connector. - Each IBE module supports a maximum of two RS-485 segments.

[Contact Us](#)



Contact Us

For datasheets, pricing, or custom fiber access solutions, please visit:
<https://frindel.es>