

Length of 35kV distribution network busbar





Length of 35kV distribution network busbar



Design Guide for bus bars

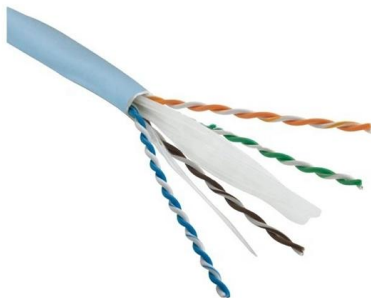
Cross-sectional area and the length determine bus bar conductor size. Cross-sectional area (..4) is equal to conductor thickness (t) multiplied by conductor

[Contact Us](#)

& _Engg/Best_Practices_in

With transmission network being basically of passive nature, unlike generators with moving components, wear and tear is comparatively less. However, with more and more application of power electronics,

[Contact Us](#)



Busbar Design and Sizing Calculations , PDF , Electric

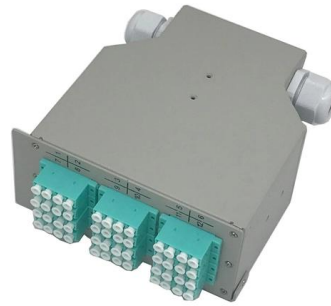
Busbar Sizing Calculation - Free download as PDF File (.pdf), Text File (.txt) or read online for free. This document provides specifications for an electrical busbar

[Contact Us](#)

3-Drawings.pdf

The drawings provide technical details for construction and installation of overhead lines and substation components for 33kV and 11kV distribution networks.

[Contact Us](#)



Busbar systems in electrical distribution: An in-depth

In electrical distribution networks, busbar systems play a pivotal role, providing efficient and reliable power transfer. The busbar production process

[Contact Us](#)



Busbars 101: A Comprehensive Guide

Find out how busbars function as conductive bars to distribute electricity within electrical systems and ensure stable power flow.

[Contact Us](#)



Coordination and protection of busbar distribution

System performance is guaranteed by standardization of circuit breaker protection and BBT busbar distribution. The performance of a busbar distribution system depends on the specific characteristics

[Contact Us](#)

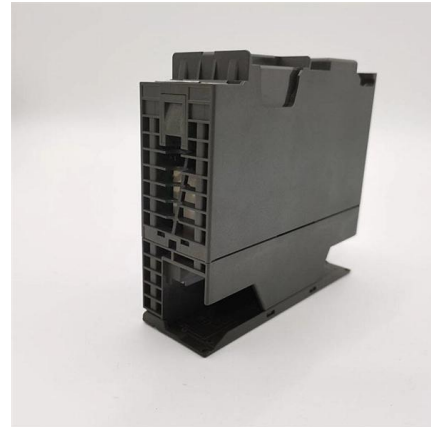




Electrical Substation Design: An Introduction

Learn about electrical substation design: key components, layout planning, busbar systems, and safety standards for efficient power distribution networks.

[Contact Us](#)



Busbar Power Distribution Explained: Benefits, Types,

Discover the benefits, types, and applications of busbar power distribution systems. Learn why busbars offer efficient, safe, and space-saving

[Contact Us](#)



ELECTRICITY DISTRIBUTION NETWORK PLANNING CRITERIA

The Distribution system should be planned with the primary objective of meeting existing and future load growth efficiently & optimally and maintaining the desired redundancy level in the system to meet

[Contact Us](#)



35kV Substation Electrical Design , PDF , Transformer

This document is a graduation thesis on the electrical primary design of a 35kV substation. It includes an abstract that outlines the design of a 35kV substation

[Contact Us](#)





Business Documentation (DBD)

NPS/003/028 - Technical Specification for Tubular Busbars, Busbar Connectors and Terminal Fittings 1. Purpose The purpose of this document is to detail the requirements of Northern Powergrid in relation

[Contact Us](#)



IEC COPPER EDITION

The distribution busbar lengths have tabs pressed into the conductor to allow tap of units to be connected. This patented method for creating the tabs does not require any welding process,

[Contact Us](#)

Understanding Busbar Sizing for 11 KV Transmission

Correctly sizing busbars for 11 KV transmission lines is essential for maintaining an efficient, reliable, and safe electrical distribution system. By

[Contact Us](#)



EHV substation layouts for busbar systems (up to 400 kV)

Substations form an important element of transmission and distribution network of electric power system. Basically, these provide points for

[Contact Us](#)



002_Final_RMEK_inCover

Regarding transmission and substation projects, the interest cost of the short term loan has to be owned as well as power generation sector and power distribution sector.

[Contact Us](#)



Sizing of busbar trunking systems (busways)

The selection of busbar trunking systems is very straightforward, using the data provided by the manufacturer. Methods of installation, insulation materials, correction factors for grouping are

[Contact Us](#)

35kV F Busbar system

Suitable for the high voltage electrical apparatus of power plant, power transformer station at or under 35kV, such as cable branch box, combination transformer and incoming / outgoing line of GIS

[Contact Us](#)



12 Busbars and distribut

The short-circuit protection device P1 placed at the origin A of the line can be considered to effectively protect branch S2 as long as the length of the branch busbar system S2 does not exceed a certain

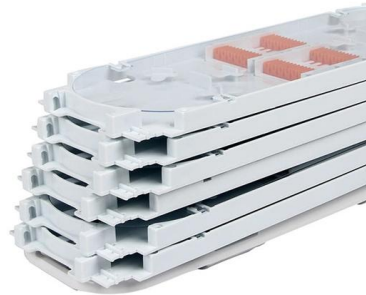
[Contact Us](#)



2CDC446001D0201

Busbar systems and installation accessories
When connecting aluminum conductors, ensure that the contact surfaces of the conductors are cleaned, brushed and treated with grease.

[Contact Us](#)



Bus Bar Design and Sizing Guide , PDF , Electrical

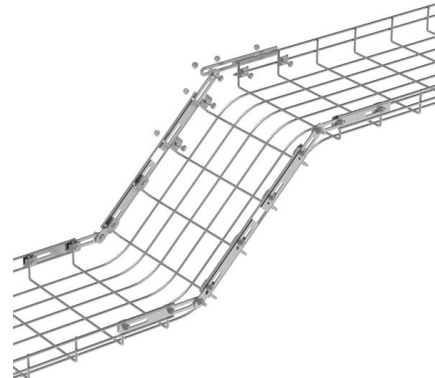
The document discusses the design process for bus bars in electrical substations. It involves: 1) Choosing the conductor cross-section based on normal current and

[Contact Us](#)

Busbar system unibar H 800 A to 4000 A System

With plug-in: Straight length busbar elements of protection type IP55 can support up to 6 plug-in on each 3 m length (depending on the rated current, see chapter "Product selection")

[Contact Us](#)



How to Design Busbar Systems for Substations

electrical substations, serving as conduits for efficient power distribution. A well-designed busbar system ensures minimal energy losses,

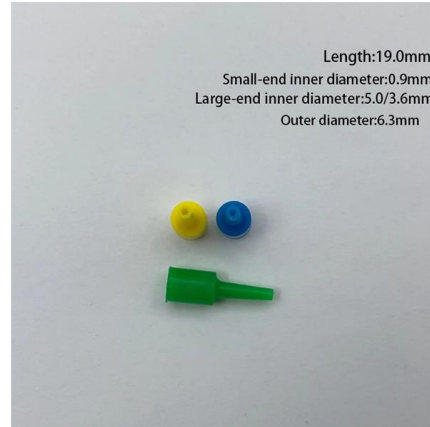
[Contact Us](#)



Busbar Basics: Understanding the Fundamentals of Electrical

Conclusion: Understanding the basics of busbars is vital for ensuring safe and efficient electrical power distribution. By grasping the core principles of busbar design, material selection, and maintenance,

[Contact Us](#)



33kV 4000amp Fully Insulated Duresca Busbar System

Fully insulated busbars provide connections between medium and high voltage equipment such as generators, switchgear or transformers. The Duresca

[Contact Us](#)

Busbar and Conductor Sizing Calculations

Busbar and Conductor Sizing Calculations This document calculates the sizing of busbars and conductors for a 400/132 kV switchyard project. It determines that a

[Contact Us](#)



Catalog Extract LV 10 · 10/2022

Our busbar systems for electrical installations offer a particularly easy way of fitting distribution systems with electrotechnical components. The modular design saves space, while quick assembly contacts

[Contact Us](#)



Contact Us

For datasheets, pricing, or custom fiber access solutions, please visit:
<https://frindel.es>