

Ld3-s optical module transmission distance





Overview

The transmission distance of long-distance dual fiber optical modules is generally 40KM or above, with a wavelength of 1550nm and a connecting fiber diameter of 9/125 μ M's single mode optical fiber for data transmission. Loss occurs because the light energy dissipates due to medium absorption, scattering, and leakage during optical fiber transmission, dissipating energy at a certain rate as the transmission distance increases. LINK-PP's high-performance 10GBASE-SR SFP+ module exemplifies how optimized optical transceiver specs deliver robust, reliable connectivity for data center interconnects and enterprise networking. Let's dissect its parameters based on industry-standard specifications: Table 2: LINK-PP LS-MM8510-S3C. For more detailed information pertaining to projection optics, see slides 65 - 73 of the DLP Optical Design Guidelines. The average output power plays a crucial role in determining the signal transmission distance. It acts as the "physical strength" of the courier, similar to how a courier needs sufficient physical strength to deliver a package to a distant location.



Ld3-s optical module transmission distance



Optical module selection for long-distance transmission

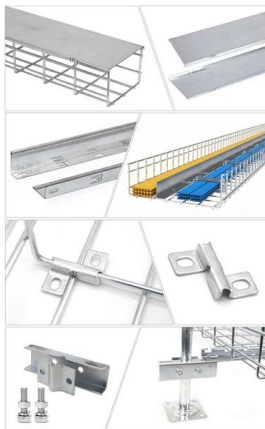
In long-distance transmission, single-mode optical modules are the first choice due to their smaller core diameter and lower transmission loss. Single

[Contact Us](#)

400G Optical Transceivers in Long-Distance & High

Explore the diverse range of 400G transceivers addressing the growing bandwidth demands of long-distance transmission. Discover flexible

[Contact Us](#)



FIBER OPTICAL COMMUNICATIONS (R17A0418)

Longer Distance: in fiber optic transmission, optical cables are capable of providing low power loss, which enables signals can be transmitted to a longer distance than copper cables.

[Contact Us](#)

Understanding Optical Modules: Working Principles,

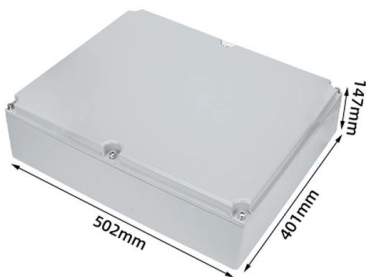
The transmission distance of an optical module is mainly limited by loss and dispersion. Loss occurs because the light energy dissipates due to medium



Internal Structure of Optical Modules

Although the internal structure and components may vary depending on the module's data rate, transmission distance, and application scenario, the elements above are the basic

[Contact Us](#)



Overview of the Development of Fiber Optic Transceivers

Figure 3 Introduction to the functions of the internal components of the optical module
 Classification of optical modules Optical modules can be

[Contact Us](#)



Optical module transmission distance

This also explains why the optical module used with single-mode fiber has a longer transmission distance. Calculation of working distance of optical module When the optical module is

[Contact Us](#)





Optical module selection for long-distance transmission

This article will delve into the selection of optical modules for long-distance transmission, from basic concepts to technical details to practical

[Contact Us](#)



Microsoft Word

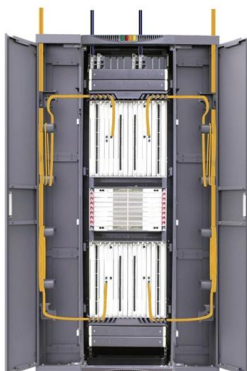
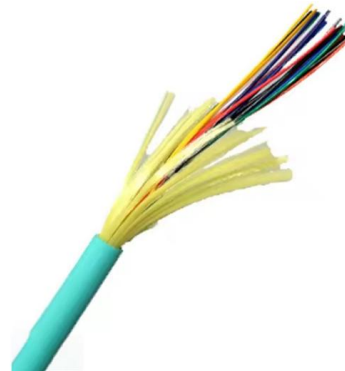
For short-distance (0 to 3 km), low-data-rate fiber optic systems, SLEDs and ELEDs are the preferred optical source. Typically, SLEDs operate efficiently for bit rates up to 250 megabits per second

[Contact Us](#)

100G QSFP28 Optical Module Selection Guide: Medium to Long Transmission

This article tells you how to choose 100G QSFP28 modules for medium and long transmission distances, as well as the advantages of QSFP28 modules and why you should choose

[Contact Us](#)



Exploring the Correlation Between Optical Module Wavelength and

This article delves into the correlation between optical module wavelength and transmission distance, shedding light on the complexities that impact the efficiency of data transmission.

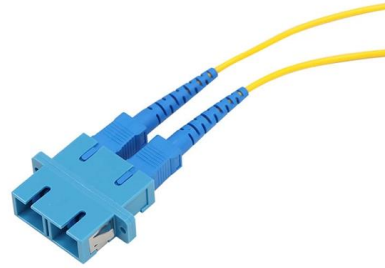
[Contact Us](#)



Optical module transmission distance and related classification

According to the different transmission distances of optical modules, they can be divided into three types: short-distance optical modules, medium-distance optical modules, and long

[Contact Us](#)



What You Need to Know About Optical Transceiver

Understand optical transceiver terminology like SR, LR, ER, and ZR to choose the right module for your network's speed, distance, and compatibility

[Contact Us](#)

Optical Transmitter

An optical transmitter is a device that converts electrical signals into optical signals and transmits them through an optical transmission line such as fiber or waveguide. It consists of semiconductor optical

[Contact Us](#)



100G Optical Module: How to Choose Between SR4,

Continuing our discussion on 100G optical modules, let's explore the essential 100G transmission standards--SR4, DR1, DR4, BiDi SR, LR4,

[Contact Us](#)





How to Estimate an Optical Module's Transmission

The transmission distance of optical modules can be estimated by analyzing factors like wavelength, fiber optic cable type, protocols, receiver

[Contact Us](#)



What are the factors that affect the transmission distance of optical

The quality of the optical module's conversion of optical and electrical signals depends greatly on its internal light source. Typically, a higher light source can provide a greater transmission

[Contact Us](#)

The Evolution of 400G, 800G, and 1.6T Optical Modules

Our optical modules ensure seamless, high-speed data transmission, effectively meeting the growing demands of modern digital landscapes. We have large stock

[Contact Us](#)



The Difference Between Long-distance Optical Modules

This is the difference in application. The transmission distance of long-distance dual fiber optical modules is generally 40KM or above, with a

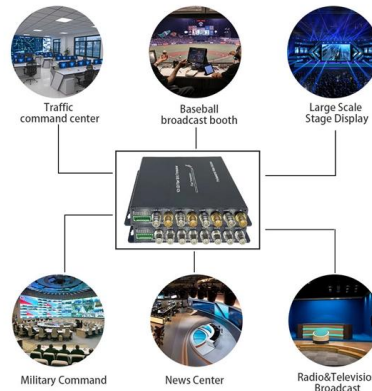
[Contact Us](#)



Explanation of Optical Module Parameters

When we receive an optical module, we can observe some basic parameters of the optical module from the label, such as the encapsulation form, rate, wavelength, and transmission

[Contact Us](#)



FS QSFP28 LR4 Optical Transceiver: High-Speed, Long

Discover FS's QSFP28 100G LR4 optical transceiver, offering low power consumption, perfect compatibility, and reliable long-distance performance

[Contact Us](#)

What Are the Key Parameters of Optical Modules

Understand the key parameters of optical modules, including transmission rate, distance, wavelength, and fiber compatibility, for better network

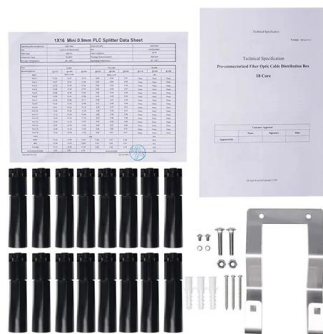
[Contact Us](#)



Wavelength and Transmission Distance of Optical

The price of the optical sources and signal converters that are paired with 850nm optical transceiver modules is far lower than the prices of 1310nm and 1550nm

[Contact Us](#)





Wavelength and Transmission Distance of Optical

Under 1550nm wavelength, 100Mbps and 1Gbps optical transceiver modules can transmit up to 160km, and 10Gbps optical transceiver modules can transmit up to

[Contact Us](#)



800G OSFP 2xDR4+ Transceiver OP13LD8-02D

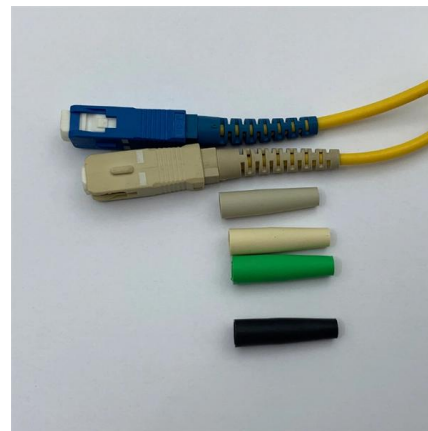
800G OSFP 2xDR4+ Transceiver OP13LD8-02D
PRODUCT FEATURES Support 106.25 Gb/s Data rate per channel Electrically hot-pluggable Single 3.3V power supply Integrated Silicon photonics

[Contact Us](#)

Compact Optical Transmitter Module with Integrated Optical

To increase the transmission capacity of a line card, CFP4, a very small transceiver, has been standardized. To support this trend, we have developed a 100Gbit/s compact optical transmitter

[Contact Us](#)



The Most Comprehensive Guide Of Optical Modules

Explore the ultimate guide to optical modules. Learn types, functions, performance metrics & how to choose the right module for your fiber network.

[Contact Us](#)



TI DLP® System Design: Optical Module Specifications

ABSTRACT The objective of this application note is to help product developers better understand optical module specifications and related system design considerations. This information helps expedite

[Contact Us](#)



Contact Us

For datasheets, pricing, or custom fiber access solutions, please visit:
<https://frindel.es>