

Lc Fiber Optic Patch Cord Testing Tool





Lc Fiber Optic Patch Cord Testing Tool



Fiber Optic Testers for LC, SC, MTP/MPO Cables

Fiber optic cable testers to pinpoint fiber defects with a 650nm red laser for LC, SC, FC, ST, E-2000, or MTP/MPO cables.

[Contact Us](#)



LC to LC fiber testing with the SimpliFiber Pro

Remove the reference patch cord from the INPUT PORT ONLY on the SimpliFiber Pro Meter. Put a known good LC to LC test reference cord into the INPUT port on

Fiber Optic Cable Testers , ShowMeCables

Testing Equipment - Fiber Optic ShowMeCables offers a variety of fiber optic cable testers. Check whether cables are working correctly or in need of repairs. With same-day shipping options, our

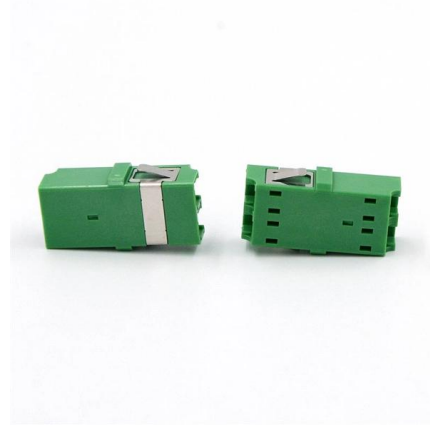
[Contact Us](#)



Fiber Optic Cable Testing Methods ,Fluke Networks

Such a comprehensive approach to fiber optic cable testing safeguards the integrity of data transmission. Fluke Networks provides comprehensive solutions for fiber optics testing, ensuring

[Contact Us](#)



How to Test Fiber Optic Patch Cords , FIBEYE

How to Test Fiber Optic Patch Cords Fiber optic patch cord is an optical transmission line connects fiber optic devices or fiber optic networks, it consists of two fiber optic connectors and a fiber optic cable.

[Contact Us](#)



OptiFiber® Pro OTDR Fiber Optic Cable Testing Tool

Fluke Networks OptiFiber® Pro OTDR built for enterprise fiber optic cabling certification testing. It supports copper certification, fiber optic loss, OTDR testing

[Contact Us](#)



VisiFault Visual Fault Locator

VisiFault Visual Fault Locator is a fiber optic visual fault locator by Fluke Networks that locates, verifies continuity, polarity of many near-end fiber faults with speed.

[Contact Us](#)





Fiber Testing , Fiber Optic Cable Testing Methods & Top

Learn essential testing methods, get help from fiber experts, and demo the industry's most complete range of fiber testers, including VFL fiber testers.

[Contact Us](#)



Fiber Optic Test Grade Leads , Kingfisher International

Patch Leads, Test Grade for various combinations of SC, LC & SMA connectors. Did you know that in most situations, the loss & quality of the test cords is one of the

[Contact Us](#)

The FOA Reference For Fiber Optics

Measuring over a 40 to 60 dB range is challenging, and reflectance testing adds another problem, how to minimize the errors from other reflecting parts of the

[Contact Us](#)



Fiber Optic Test Cords , Fluke Networks

See why quality matters in fiber optic test cords including OTDR launch, test reference, and port protector cords. See our patented, durable metal LC connector.

[Contact Us](#)



Fiber Optic Test Equipment

FOC provides fiber optic test equipment to help you certify and troubleshoot fiber optic networks.

[Contact Us](#)



Fiber Optic Cable Troubleshoot Kit

The design with a small pouch makes it portable; the dust-proof design keeps the optical fiber connector clean. When you need to test the continuity of the LC fiber optic patch cord, you need to use the FC

[Contact Us](#)



Fiber Optic Cable Tester for LC, SC, FC, ST Connector

LC/SC/FC/ST Fiber Optic Cable Tester for Troubleshooting OptoSpan's FIBER-TEST-LC (For LC, SC, FC, ST, E-2000 connectors) is a simple fiber optic cable

[Contact Us](#)



Optical fiber connector

An optical fiber connector is a device used to link optical fibers, facilitating the efficient transmission of light signals. An optical fiber connector enables quicker

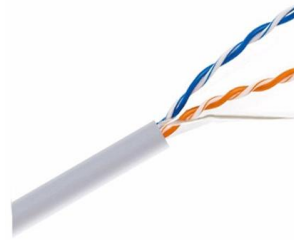
[Contact Us](#)



Amazon : Lc Fiber Tester

Explore fiber optic testers designed for LC and other universal interfaces. Find portable power meters, visual fault locators, and multi-function testing tools.

[Contact Us](#)



SimpliFiber® Pro Optical Power Meter and Fiber Test Kits

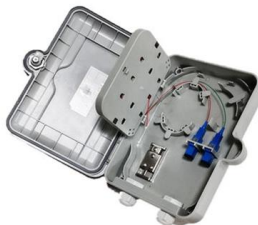
SimpliFiber Pro Optical Power Meter and Fiber Test Kits include all the tools necessary to verify and troubleshoot optical fiber cabling systems, measure loss

[Contact Us](#)

Amazon : Fiber Optic Laser Tester

Explore portable fiber optic testing equipment with universal connectors. Shop visual fault locators and optical power meters for reliable cable diagnostics.

[Contact Us](#)



Testing LC Fiber Optic Links

Testing LC Fiber Optic Links Fluke Networks has teamed up with manufacturers of SFF (Small Form Factor) fiber optic connectors to provide an effective method of testing, certifying, and documenting

[Contact Us](#)



How to Test Patch Cords and Fiber Jumpers

A copper patch cord and fiber jumper connection test was conducted to see which brands can consistently pass industry standards. See the results here.

[Contact Us](#)



Lightera: Complete Fiber Optic and Connectivity Solutions

Leader in fiber optic and connectivity solutions, uniting Furukawa Electric's fiber and cable division, Furukawa Electric LatAm and OFS.

[Contact Us](#)



Fibre Tester Accessories , Fibre Testing Tools , RS

Our Fibre Tester Accessories range includes all the essential fibre tester equipment necessary to ensure professional results when installing and maintaining fibre cables.

[Contact Us](#)



How to Test a Fiber Optic Cable with LC Connectors?

Testing a fiber optic cable with LC connectors is crucial for verifying that your fiber optic network meets industry standards for performance and

[Contact Us](#)





LC to LC fiber testing with the SimpliFiber Pro

While the SimpliFiber Pro Source is stabilizing, clean and inspect your test reference cords. Replace the SC Interchangeable Adapter with the LC Interchangeable

[Contact Us](#)



How to test the loss of fiber cable patch cord?

Our fiber optic cable patch cords undergo over a dozen production processes, with 100% monitoring and testing throughout the entire process. Only qualified products are shipped.

[Contact Us](#)

How to Test a Fiber Optic Cable with LC Connectors?

By following proper test procedures and methodologies, you can validate your cabling infrastructure, identify issues early, and ensure optimal

[Contact Us](#)



Contact Us

For datasheets, pricing, or custom fiber access solutions, please visit:
<https://frindel.es>