

KVM Switcher Screen Interference





Overview

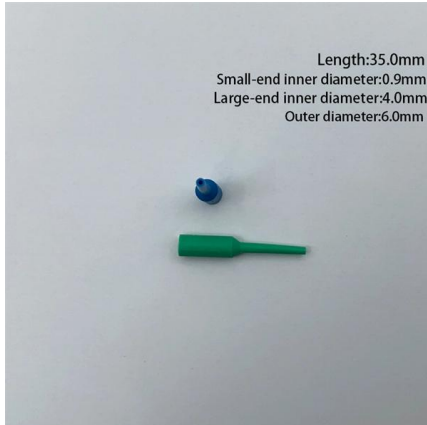
Signal Degradation or Interference KVM switches—especially analog models or low-quality digital ones—can introduce signal degradation. This is more common with high-resolution or high-refresh-rate monitors, where the video signal requires greater bandwidth. A KVM switch is a convenient tool that allows users to control multiple computers from a single keyboard, monitor, and mouse setup. However, while these devices can streamline workflows and reduce desk clutter, users sometimes report video artifacts or screen distortions when using a KVM switch. You'll also learn when it might be time to upgrade to a more reliable, feature-packed KVM switch like Avico's. does it show up normal while directly connected to the laptop?

does it show up normal while directly connected to the laptop?

You are incredible! Since it was easiest, first thing I did was turn down the refresh rate to 60hz (though it says 59. 1 HDMI Dummy Plug, hdmi Dummy, Dummy hdmi Headless Display Adapter Supports 4K@120Hz, 1440p@120Hz, 1080p@120Hz Virtual Monitor EDID.



KVM Switcher Screen Interference



Question

There is no impact to user data or functionality, this is strictly a front-end display issue. We'll post an update once the fix has been deployed. Thanks for your patience while we get this

[Contact Us](#)

Screen flickering on 165Hz after powering off the KVM switch

Hi there, first of all I would like to mention, that I'm very happy with your KVM product. It worked perfectly fine since the beginning ? I have one weird issue which I hope you will be able to

[Contact Us](#)



Why Monitors May Display Artifacts and Distorted Video When Using

A KVM switch is a convenient tool that allows users to control multiple computers from a single keyboard, monitor, and mouse setup. However, while these devices can streamline workflows

[Contact Us](#)

Question

I have to Apple Cinema Displays, with each one DVI-D input. Because I need to use two Computers with these Monitors, I bought a KVM Switch. It has

[Contact Us](#)



Why Video Sometimes Behaves Differently When Using a KVM Switch

When setting up a workstation, users expect consistent video performance whether they connect their computer directly to a monitor or through a KVM (Keyboard, Video, Mouse) switch.

[Contact Us](#)



Audio noise from KVM

I have the Level1Techs 1.4 Display Port KVM Switch - Dual Monitor - Two Computer and have been using it for a few months. Static type noise is coming from the audio out based on video

[Contact Us](#)



KVM Switch Monitor Signal Loss : r/techsupport

Hello everyone! I have a problem with my setup after I implemented a KVM switch from Terived. My setup did run just fine before the switch, but now my screens flicker sometimes (lose signal for about

[Contact Us](#)

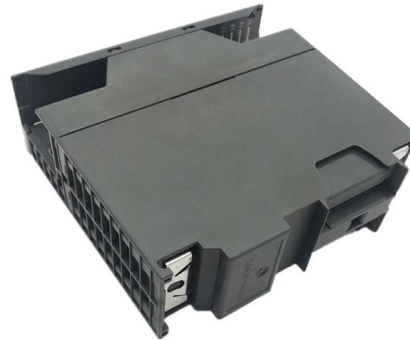




How can I avoid windows being rearranged when I use

I have bought a KVM switch. It works fine, except that when I use the switch, it seems that the computer I'm switching from loses the monitor (as in:

[Contact Us](#)



multiple monitors

I bought a Displayport KVM switch to switch between two PCs using the same two monitors and I cannot get one of the monitors to work if I use an

[Contact Us](#)



Can KVM switches cause wireless interference? : r/LinusTechTips

Since I installed a KVM switch under my table I've been experiencing weird issues that I can only attribute to wireless interference, though I lack a way to objectively determine if it actually is

[Contact Us](#)



KVM Flickering Fix

Troubleshoot KVM flickering and display errors with our step-by-step guide. Fix blank screens and get your dual monitor setup working smoothly.

[Contact Us](#)





Common Problems with KVM Switch & Solutions (PART

To minimize the interference, connect your USB 3.0 device to a port farther away from the wireless adapter. Video about KVM Switch Troubleshooting

[Contact Us](#)



KVM switch screen resolution problems

0 Problem description: One laptop connected to a monitor via a KVM switch has correct screen resolution while other laptop with exact same configuration connected to the same KVM

[Contact Us](#)



Issues with monitor output quality through KVM/HDMI mirrors

Trying to put in a KVM switch so that I can swap computer (2) to use monitor (A) easily. In setting this all up, I bought two HDMI mirror duplicators in order to feed the KVM with two inputs for each source to

[Contact Us](#)



KVM Help (loosing my mind here)

HDMI black screen on PC. Moving to reset bios. monitors work individually on other devices. so I'm going to get this pc connecting and rule out some of that and then come back to the

[Contact Us](#)

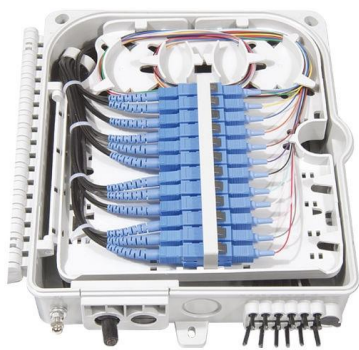




Issue with monitor resolution when using a KVM switch

Sounds like the monitor EDID settings (what resolutions/refresh rates it supports) are not getting to Ubuntu when it's connected via the KVM. You can run xrandr to see what resolutions are

[Contact Us](#)



Prevent windows from loosing monitor on switch

I'm using the KVM to switch between my gaming computer and my work one. But when I work, the rest of the family would sometimes like to be able

[Contact Us](#)

Intermittent Video Artifacts and Black Screen

KVM Model: USB-C KVM Switch v3 USB Interface (5-gigabit or 10-gigbit): Problem: Hello! I am experiencing my screen flashing black and digital artifacts appearing on my on 34"

[Contact Us](#)



Question

I have a DisplayPort KVM with two outputs. I have 1 computer, Luxa, and one new computer, MechBot. Now when Luxa is connected through the KVM, it flickers and there's nasty lines

[Contact Us](#)



Dual/Triple Monitor KVM Switch Splash Screen

Cross-testing method: All input sources correspond to a monitor splash screen. STEP1. Please exchange connection ports which the monitors

[Contact Us](#)



Troubleshooting monitor problems when connected to a KVM switch

Use this procedure to diagnose monitor problems when the monitor is connected to a KVM switch on a 1x8 or 2x8 Console Manager.

[Contact Us](#)

Fix KVM Switch Issues: How to Solve Monitor Problems

Quick fixes for KVM switch monitor not working. Learn how to resolve common monitor issues including detection problems, switching delays, and

[Contact Us](#)



This hub connects to the laptop via type C lightning cable. Everything seems to work fine other than the screen is flickering. If anyone has any advice or ideas, I'd appreciate it. I intend to

[Contact Us](#)



Display signal randomly drops in KVM or monitor

I have a L1 DisplayPort 1.4 4 Port KVM connected to an ASUS Tuf VG28UQL1A and the monitor will randomly lose the display signal (it goes black and says "No Signal"). This happens with

[Contact Us](#)



Common Problems with KVM Switch & Solutions (PART

However, when using a KVM switch, you may encounter some common issues. We will now introduce some of these problems and provide

[Contact Us](#)

Contact Us

For datasheets, pricing, or custom fiber access solutions, please visit:
<https://frindel.es>