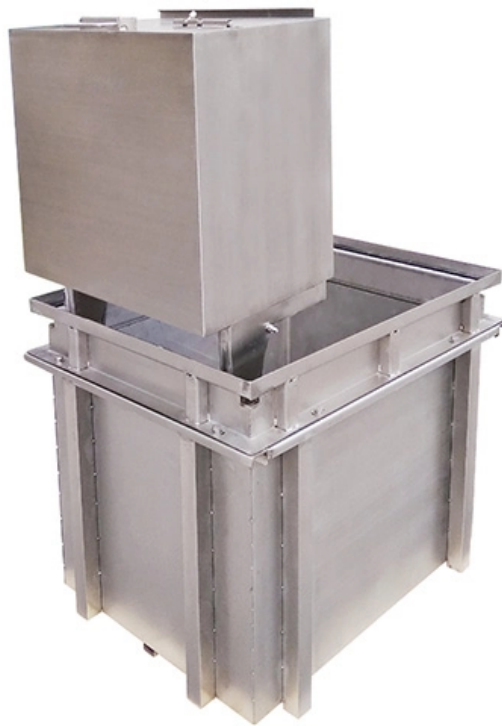


Italian laser diode QSFP28





Italian laser diode QSFP28



Laser Diode Selector

The laser diode selector allows you to specify the wavelength, power and package and download datasheets for a wide range of high quality laser diodes.

[Contact Us](#)

QD Laser|Semiconductor Laser & Epitaxial Wafer

QD Laser offers high-quality DFB Laser, Compact Visible Laser, high-power Fabry-Perot Laser, Quantum Dot Laser & Epitaxial Wafer. Contact us for

[Contact Us](#)



Design and Implementation Scheme of QSFP28 Optical

A quad, small form-factor pluggable 28 Gbps optical transceiver design scheme is proposed. It is capable of transmitting 50 Gbps of data up to a

[Contact Us](#)



100G-QSFP28-AI and Data Center Networking

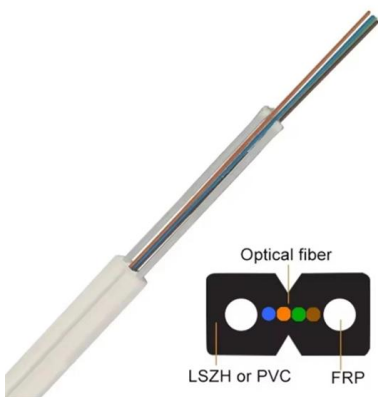
They have a case temperature range of 0°C~70°C and comply with IEEE 802.3bm and QSFP28 MSA standards. The products are primarily used in 100G Ethernet,



50GBASE-LR QSFP28 1310nm 10km Transceiver Datasheet , FS

All are common within the QSFP28 module and all module voltages are referenced to this potential unless otherwise noted. Connect these directly to the host board signal-common ground plane.

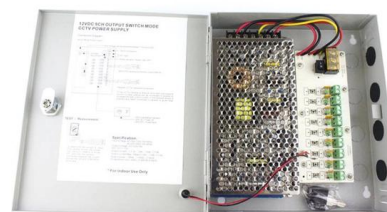
[Contact Us](#)



The QSFP28 100G FR single laser, a competitor to the CWDM4?

The QSFP28 100GBASE-FR, also called QSFP28 100G single lambda, will be a single laser and a single receiver of 100Gbps instead of being 4x25Gbps (4x lasers and 4x receivers). Back

[Contact Us](#)



Coherent: Dual Laser 100G ZR QSFP28-DCO Transceiver

Coherent's Dual Laser 100G ZR QSFP28-DCO incorporates two full C-band, independently tunable lasers, one for the transmit side and one for the receiver local oscillator.

[Contact Us](#)





100G QSFP28 Single? : Optical Transceiver Module , NEC

The NEC's 100G QSFP28 optical transceiver that enables high-speed data transmission of 100Gb/s. We offer a diverse range of options that support

[Contact Us](#)



Eine kurze Einführung in den optischen Transceiver QSFP28 LR4

QSFP28 LR4 ist ein Hot-Plug-fähiger optischer 4-Kanal- und Duplex-Transceiver, der für die Übertragung über eine Distanz von bis zu 10 km im 100G-Ethernet-Netzwerk ausgelegt ist. Der

[Contact Us](#)

Innolight 100Gb/s QSFP28 CWDM4 Lite 500m Optical

Introducing an advanced transceiver module, purpose-built for 500m optical communication applications, compliant with the 100GBASE CWDM4 Open

[Contact Us](#)



Q282D080500F / QSFP28 / 50GBase-ZR2

Q282D080500F is a high performance QSFP28 transceiver module for 50Gbps data links over a single mode fibre pair. The maximum reach is 80km. The two transmitters are cooled 1310nm LAN-WDM

[Contact Us](#)



Oclaro 2-km, 10-km 100-Gbps QSFP28 optical transceivers reach

Oclaro, Inc. (NASDAQ: OCLR) says that the company's 2-km CWDM4 QSFP28 and 10-km LR4 QSFP28 optical transceivers are qualified and released to production. The optical modules leverage

[Contact Us](#)



50G LR BiDi QSFP28 , Broadex Technologies

50G LR BiDi QSFP28 Product Features QSFP28 MSA form factor Digital diagnostics functions are available via the I2C interface 0°C to 70°C Commercial temperature

[Contact Us](#)

100G ZR QSFP28 Digital Coherent Optics Transceiver

In the QSFP28 module the DSP is paired with a highly efficient silicon photonics optical front-end and a power-optimized tunable laser, resulting in a typical

[Contact Us](#)



50GBASE-ZR2 QSFP28 1310nm 80km Transceiver Datasheet , FS

Description The 50GBASE-ZR2 QSFP28 Optical Transceiver Module is a high performance transceiver that supports up to 80km link lengths over OS2 SMF. Digital Diagnostics functions are available via a

[Contact Us](#)



QSI Laser Diodes

QSI- a leading laser diodes manufacturer. Reliable, high quality diodes at a competitive price. Wavelengths from 635nm to 905nm.

[Contact Us](#)



Introduction to 100G QSFP28 Optical Transceiver

100G QSFP28 optical transceivers are designed for 100 Gigabit Ethernet, EDR InfiniBand, or 32G Fibre Channel. What is 100G QSFP28 optical transceiver?

[Contact Us](#)



convergent

Convergent Photonics owns in Torino its Italian centre for the development and production of high power laser diodes up to 250W for industrial

[Contact Us](#)



100GBASE-LR4 QSFP28 10km SMF , EUR181 , EDGE

100GBASE-LR4 QSFP28 transceiver, 10 km SMF, 4 LAN WDM, 6.3 dB link budget. Dual-rate LR4/OTU4 (112 Gbps). EU stock + lifetime warranty. From EUR181.

[Contact Us](#)



What Is a 100G QSFP28 Optical Transceiver?

Among the spectrum of 100G optical transceivers, the QSFP28 100G optical transceiver stands out for its compact size and energy efficiency.

[Contact Us](#)



Silicon Photonics vs. Laser Technologies: Optimizing 100G QSFP28

Explore the differences between silicon photonics and traditional laser technologies in 100G QSFP28 transceivers. Compare performance, cost, and scalability to optimize high-density

[Contact Us](#)

Finisar II-VI

FT: Finisar transceiver LC: 100G product family 1: DFB laser type, OOK EML/DML Tx - STD Rx 1: 4 optical channels (MUX/DEMUX) 5: QSFP28 form factor 5: Product Generation 2.0

[Contact Us](#)



DATASHEET 6.1 QSFP28 100G-LR4 SINGLE RATE, I-TEMP

QSFP28 100G-LR4 SINGLE RATE, I-TEMP QSFP28, 100GBASE-LR4, 1310nm, SM, DDM, 7.3dB, 10km, LC, I-temp

[Contact Us](#)

100GBASE-LR QSFP28 Single Lambda



1270-1330nm 10km DOM

Description The 100GBASE-LR Single Lambda QSFP28 Optical Transceiver Module is designed for use in 100GBASE Ethernet throughput upto 10km over single mode fiber (SMF) using a wavelength of

[Contact Us](#)



Connecting the QSFP28 100G FR single laser in

The QSFP28 100GBASE-FR, also called QSFP28 100G single lambda, will be a single laser and a single receiver of 100Gbps instead of being

[Contact Us](#)



100G QSFP28 LR1 20km , GIGALIGHT

Description The Gigalight 100G LR1 QSFP28 optical transceiver, 100G QSFP28 LR1 (GQS-SPO101-LR1C) is designed for using in 100-Gigabit Ethernet links up to 10km over Single-Mode Fiber (SMF).

[Contact Us](#)



Applied Optoelectronics launches 25Gb/s directly modulated lasers

The lasers are expected to be used in 100Gb/s QSFP-28 transceivers and light engines, including CLR4 and PSM4, for data-center applications. Samples are available now, with production

[Contact Us](#)



100G BiDi QSFP28 150m , Single Fiber MMF



EDGEOPTIC 100G BiDi QSFP28: 150m OM5 MMF single fiber, 850/900nm, 1.9dB budget, 106.25 Gbps. LC simplex connector, also supports 40G QSFP operation.

[Contact Us](#)



Contact Us

For datasheets, pricing, or custom fiber access solutions, please visit:
<https://frindel.es>