

Is there a connection between the distribution box and the neutral wire





Overview

Whether the neutral line of each circuit in the distribution box needs to be connected to the neutral block does not depend on the neutral block, but depends on the type of switch in the distribution box. The following introduces the specific installation methods from three aspects: preparations before installation, installation. Located in the breaker box, the neutral wire acts as a return path for the current, completing the electrical circuit and balancing the flow of electricity.



Is there a connection between the distribution box and the neutral



Why are Neutral and Ground Wires Separated in a

Why Do Neutral and Ground Conductors Need to Be Separated in a Subpanel? According to NEC Article 250, neutral and ground wires must remain separate in

[Contact Us](#)

Neutral and the earth are bonded at the main panel or

Typical distribution system can be illustrated as: Here are my premises (and assumptions): 1-) Chassis in a house must be connected to the earth, not to the

[Contact Us](#)



Principles of Transformers in Parallel Connection (1)

If two transformers of different voltage ratio are connected in parallel with same primary supply voltage, there will be a difference in secondary

[Contact Us](#)



DIY smart home: What's a neutral wire and what to do if

So when it comes to designing a smart home, a neutral wire can cause headaches if you don't have one at your switch location. Or if you don't know



Understanding Neutral, Ground, Grounding, and Bonding

NEC 2008 states that the neutral and ground wires should be "bonded" together at the main panel (only) to the grounding rod. Assuming that the ground rod is

[Contact Us](#)

How To Connect A Distribution Box

Learn how to connect a distribution box with this easy-to-follow, step-by-step guide. From tools and materials needed to common installation mistakes and solutions, this comprehensive article will

[Contact Us](#)



Where Does the Neutral Wire Go in a Breaker Box? - Answered

The National Electrical Code requires a separate ground wire and neutral wire connection for the sub panel. Having neutral and ground on same bus bar in the subpanel may cause danger to

[Contact Us](#)



Understanding Your Breaker Box: How L1, L2, and Neutral Work

Each of these lines carries 120 volts of alternating current (AC) and is connected to its own bus bar inside the breaker box. These lines come straight from your electrical service, feeding power into

[Contact Us](#)



Distribution Box Wiring Steps

?Wiring and Binding? ?Wiring Direction?: Wiring between the main circuit breaker and each branch circuit breaker in the box generally goes on the left, and

[Contact Us](#)

Breaker Box Wiring: Which Wires Are Neutral and

Check your electrical panel for proper wire connections, ensuring

[Contact Us](#)



How to Wire a Home Distribution Box

How to Wire a Home Distribution Box - Step-by-Step , Distribution DB box wiring diagram
Welcome to our channel! In this video, we'll walk you through the

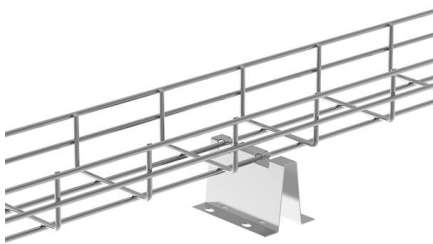
[Contact Us](#)



Distribution Box Wiring Steps

?Wiring Direction?: Wiring between the main circuit breaker and each branch circuit breaker in the box generally goes on the left, and the wiring out of

[Contact Us](#)



on video How to Wire a Home Distribution Box

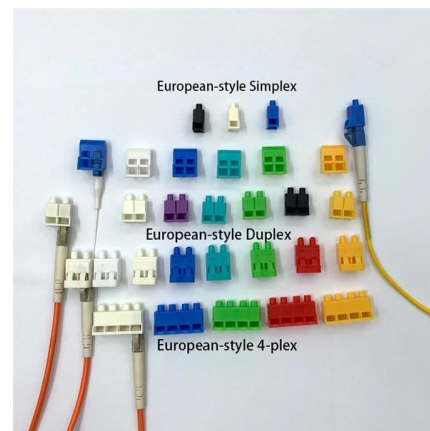
How to Wire a Home Distribution Box - Step-by-Step , Distribution DB box wiring diagram
Welcome to our channel! In this video, we'll walk you through the

[Contact Us](#)

How to install the neutral wire in the distribution box?

The installation of the neutral wire in the distribution box is a crucial part of the electrical system, which is related to electrical safety and system stability.

[Contact Us](#)



How to Install a Cable Distribution Box Safely and

Function: Cable distribution boxes are mainly used for power distribution, circuit protection, and cable management, with built-in protective

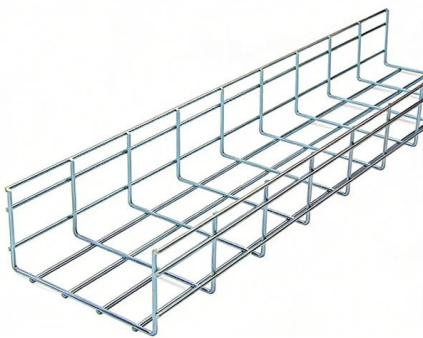
[Contact Us](#)



Understanding Circuit Breaker Wiring Configurations in

Correct wiring methods for circuit breakers within distribution boxes are fundamental to ensuring electrical safety and compliance with established codes.

[Contact Us](#)



Why are Neutral and Ground Wires Bonded in a Subpanel?

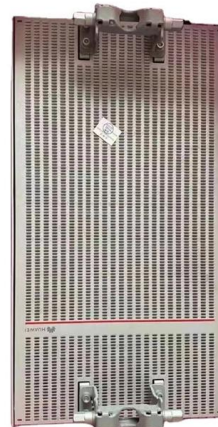
Why Do Neutral and Ground Conductors Need to Be Bonded in the Main Panel? According to NEC Article 250, both the neutral and ground wires must be

[Contact Us](#)

ELI5: What is the purpose of a neutral line in electrical wire?

Use a voltmeter. Touch the neutral lead to something you know is grounded and the hot lead to the neutral wire. If it reads 0 volts, then there is no current between the two.

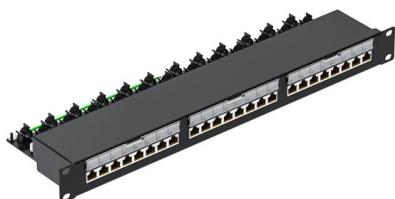
[Contact Us](#)



Neutral Vs Ground Wire: What That White Wire Is

I have always had the most difficult time understanding why I need both a neutral and ground wire when they ultimately both connect to the same bar in a breaker

[Contact Us](#)





Understanding the Diagram of a GE Breaker Box

The neutral bar is where the neutral wires from the electrical circuits connect, while the ground bar is where the ground wires are attached. These bars provide a

[Contact Us](#)



The Importance of the Neutral Wire in a Breaker Box

Connection: The neutral wire is connected to the neutral bus bar in the breaker box, which is connected to the ground. This connection allows for the safe dissipation of excess current and provides

[Contact Us](#)

Wiring Of Neutral Block In Distribution Box

Whether the neutral line of each circuit in the distribution box needs to be connected to the neutral block does not depend on the neutral block, but depends on the type of switch in the

[Contact Us](#)



Understanding Circuit Breaker Wiring Configurations in

Neutral (N) Wire Connection: For 1P circuit breakers, designed to control only the live wire, the neutral (N) wire bypasses the breaker and is directly

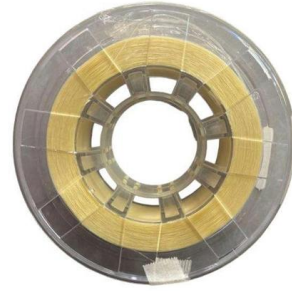
[Contact Us](#)



The Importance of the Neutral Wire in a Breaker Box

The neutral wire in a breaker box plays a crucial role in the safe distribution of electricity throughout a building. It is an essential component of the electrical system and is connected to the grounding

[Contact Us](#)



Size determination, installation method and wiring mode

The distribution box is the central hub of the home circuit and the general control of our daily power consumption. It is an indispensable electrical equipment. If there

[Contact Us](#)

Contact Us

For datasheets, pricing, or custom fiber access solutions, please visit:
<https://frindel.es>