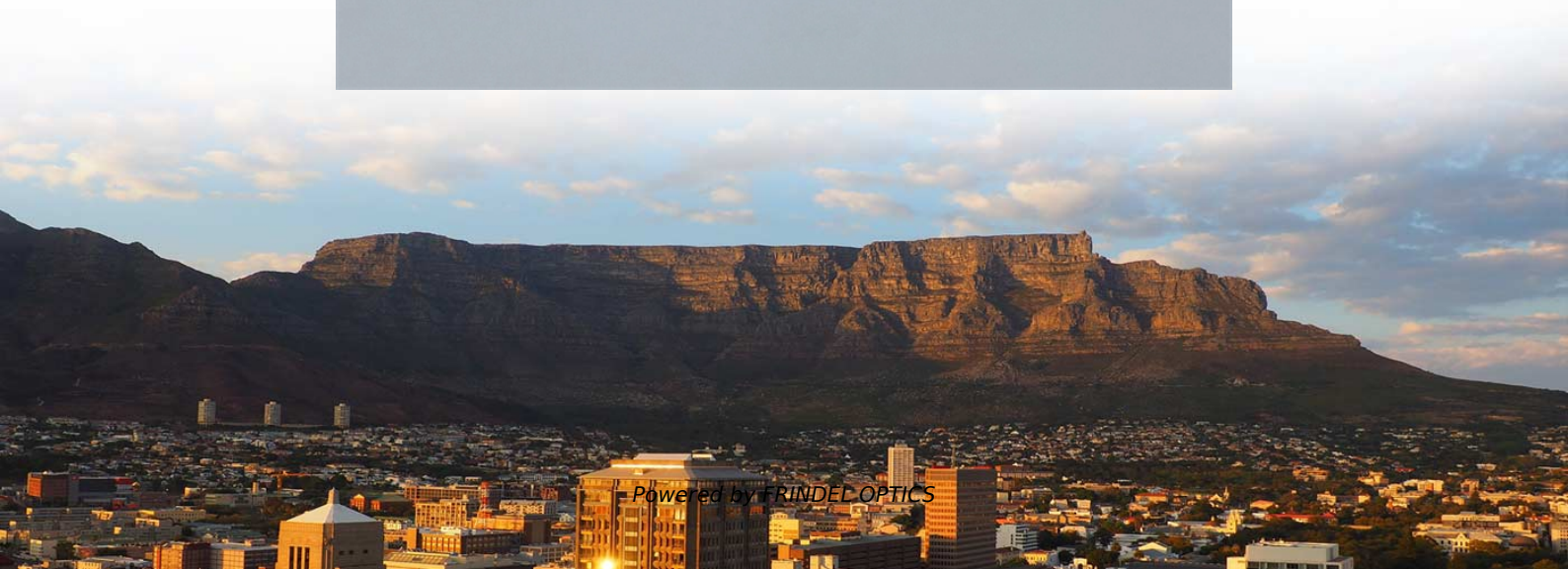
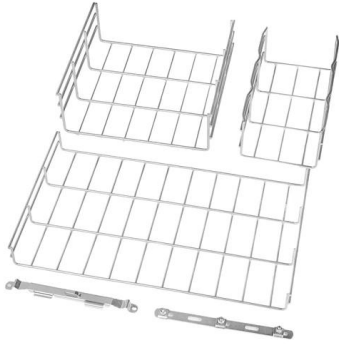


Is it okay to use an 80km 10 Gigabit optical module at close range





Is it okay to use an 80km 10 Gigabit optical module at close range



Understanding 10 Gigabit Ethernet: A Comprehensive

Uncover the power of 10 Gigabit Ethernet and its impact on network speed and efficiency. Explore the benefits, uses, and differences in our

[Contact Us](#)

100G DWDM QSFP28 80 vs 120: Complete Comparison

Compare 100G DWDM QSFP28 80km vs 120km modules. Learn differences in optical budget, power, DCM requirements, and best applications.

[Contact Us](#)



SFP Optical Module Selection Guide for 2025: Key

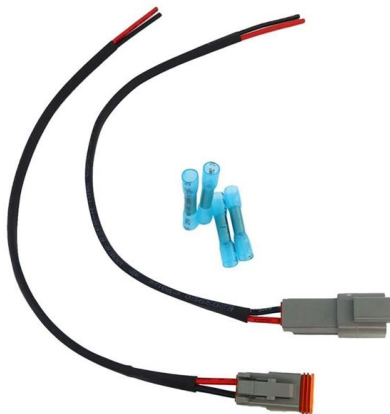
Explore our comprehensive SFP optical module selection guide for 2025. Learn about crucial factors like data rate, distance, fiber type, and

[Contact Us](#)

10G Base ZR Compatible Transceiver

Compatible 10G Base ZR SFP+ for 80km single-mode fiber. 1550nm, 23dB budget, IEEE 802.3ae. Works with 80+ brands.

[Contact Us](#)



Enabling Long-Reach 10G Connectivity: The 80km

Compared to shorter-reach modules (e.g., 10km or 40km), the 80km variant eliminates the need for intermediate signal regeneration, simplifying

[Contact Us](#)

10GBASE-ER SFP Module Explained: Distance, Specs & Use Cases

A 10GBASE-ER SFP module is an extended-reach 10Gbps optical solution designed for stable single-mode fiber links up to 40km, making it a practical choice for long-distance Ethernet deployments



[Contact Us](#)



There are now 80 meter 10G RJ45 SFP+ modules, whats the tech

There are now 80 meter 10G RJ45 SFP+ modules, whats the tech behind those or downsides? Its seems that several 3rd party optics providers (who also sell RJ45 SFP+ modules) recently started to

[Contact Us](#)



10 Gigabit Ethernet , 10GE Types and Cable

Explore our range of 10 Gig SFP switches for high-speed fiber connectivity. Different Types of 10 Gigabit Ethernet and Their Compatible

[Contact Us](#)



10 Gbit/s SFP+ Optical Module

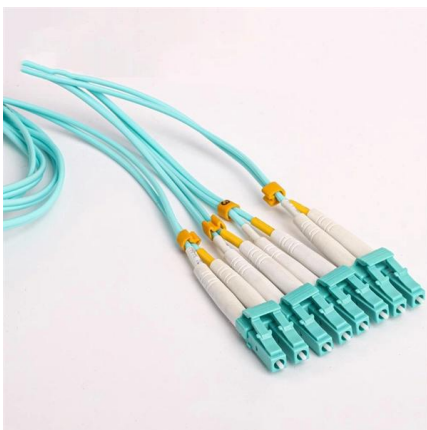
You can use different levels of 10 Gbit/s SFP+ optical modules only with 10 GE interfaces. The wavelength of these 10 Gbit/s SFP+ optical modules can be 850 nm, 1310 nm, or

[Contact Us](#)

10 Gigabit Ethernet

10 Gigabit Ethernet (10GE, 10GbE, or 10 GigE) is a group of computer networking technologies for transmitting Ethernet frames at a rate of 10 gigabits per second.

[Contact Us](#)



Gigabit Ethernet and How it works (a 2022 Guide)

Learn everything you need to know about how the Gigabit Ethernet works from our 2022 guide with FAQs, additional explanations, and images.

[Contact Us](#)



10 Gigabit Ethernet Fiber Design Considerations

The 10 Gigabit Ethernet operating distances provided in the tables below are limited by the channel insertion loss, the cable bandwidth for multimode fiber, and the optical transceiver characteristics

[Contact Us](#)



Complete 10GbE Network Setup Guide: Level Up Your Speed

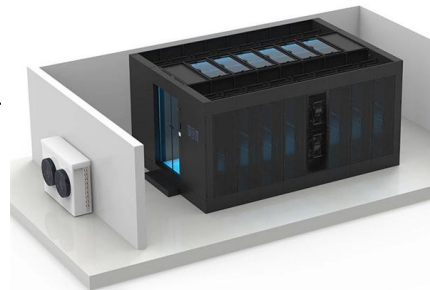
Ever waited forever for a big file to copy? Forget that! With 10 Gigabit Ethernet, you can send huge videos in seconds, not minutes. It's like

[Contact Us](#)

10GBASE-ER SFP Module Explained: Distance, Specs & Use Cases

? What Is a 10GBASE-ER SFP Module? A 10GBASE-ER SFP module is a 10Gbps Ethernet optical transceiver designed for long-distance transmission over single-mode fiber, with a maximum reach of

[Contact Us](#)



FS Community

Hier sollte eine Beschreibung angezeigt werden, diese Seite lässt dies jedoch nicht zu.

[Contact Us](#)



10G Optical Modules: Short-Range vs. Long-Range Comparison Guide

Understand short-range and long-range 10G optical modules in terms of distance, budget, energy use, and scalability to make the right choice.

[Contact Us](#)



10Gbps 80KM SFP+ Optical Transceiver module

The 10Gbps 80KM SFP+ Optical Transceiver Module is designed for high-speed, long-distance fiber optic connections. It supports 10 gigabit per second data rates

[Contact Us](#)



Reach Further, Faster: Your Ultimate Guide to Long-Range 10G

Long-range 10G optical modules enable high-speed data over distances up to 80km. Learn about types, specs, compatibility, and choosing the right module.

[Contact Us](#)



10 Gbit/s SFP+ Optical Modules

10 Gbit/s SFP+ optical modules apply to 10 GE optical ports. The wavelength can be 850 nm, 1310 nm, or 1550 nm, and the transmission distance ranges from 0.5 km (0.31 mi) to 80 km (49.71 mi).

[Contact Us](#)





There are now 80 meter 10G RJ45 SFP+ modules, whats the tech

For example, a quad-port NIC can probably safely use 10GBase-T SFP+ modules if you populate one or two ports but leave the rest empty so that total power consumption stays low enough and heat

[Contact Us](#)



A Deep Dive into the QSFP28-100G-ZR4 Optical

As 100 Gigabit Ethernet (100GbE) becomes the standard for high-speed interconnects, the challenge shifts from mere speed to achieving greater

[Contact Us](#)

Reach Further, Faster: Your Ultimate Guide to Long-Range 10G Optical

Long-range 10G optical modules enable high-speed data over distances up to 80km. Learn about types, specs, compatibility, and choosing the right module.

[Contact Us](#)



10G SFP+ 80 km DWDM Optical Transceiver Datasheet

10G SFP+ 80 km DWDM Optical Transceiver Datasheet Overview ta rate of 10Gbps and 80km transmission distance with SMF. This module is designed for single mode fiber and operates at a

[Contact Us](#)



What is the longest transmission distance of a 10G

There is a variation of ranges, Technically ZR modules are the longest and can transmit data over single-mode fiber for distances up to 80

[Contact Us](#)



400G vs 800G Optical Modules: Differences, Use Cases, and

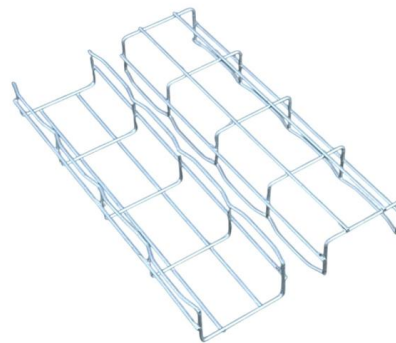
Compare optical modules for data centers and AI clusters. Learn key differences in standards, power, cabling, and use cases.

[Contact Us](#)

10G SFP+ 80 km DWDM Optical Transceiver Datasheet

10G SFP+ 80 km DWDM Optical Transceiver Datasheet Overview The T1-SFP-10G-DWDM80-Cxx is a high performance, cost effective module supporting d. ta rate of 10Gbps and 80km transmission

[Contact Us](#)



Contact Us

For datasheets, pricing, or custom fiber access solutions, please visit:
<https://frindel.es>