

Is it okay to directly run cables in cable trays





Overview

Due to their exposure to the open air because of the cable trays, the wires contained within need a very durable outer covering. The regulations dictate that the cables must either be Type TC (also known as Tray Rated) or must be metal-armored (Type MC). This is a description of how to select, install, and support these metal or plastic frames, on which electrical wires are installed. Installation of Cable in Cable Trays involves precise routing on support systems, NEC/IEC compliance, grounding, ampacity derating, bend radius control, segregation of services, fire safety, labeling, and reliable cable management for industrial and commercial facilities.



Is it okay to directly run cables in cable trays



Installation Standards of Cable Trays

Cable trays can provide a safe component of a wiring distribution system. However, if not designed and installed properly, wiring inside cable trays may pose hazards

[Contact Us](#)

Cable trays are structural components of a facility's electrical system

Cables in these trays are easy to mark, find, and remove. If the cable tray system is not managed properly and overloading, mixing of cable classifications, improper grounding, and other Code non

[Contact Us](#)



Installation Of Cable In Cable Trays: NEC, Safety

Cable tray layout must take into consideration the design limits of the cable. To minimize damage and verify integrity after installation, follow the practices

[Contact Us](#)

Cables Allowed in Tray

This test involves loading multiple cables in a vertical section of cable tray and igniting the cable at the base of the tray. The cable passes the test if it does not propagate the fire.

[Contact Us](#)



Do Tray Cables Need to Be in Conduit? A Complete Guide

Tray cables (TC, TC-ER, and similar types) are specially designed for use in cable tray systems, which support multiple runs of cable across industrial and commercial buildings. Conduit,

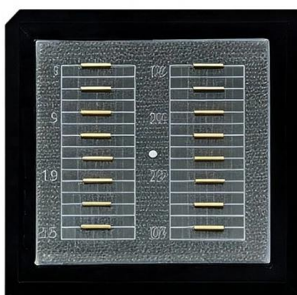
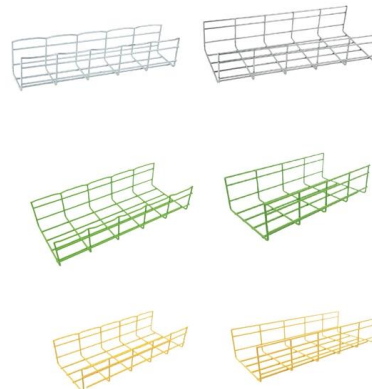
[Contact Us](#)



A Guide to Installing and Supporting Electrical Cable Trays

A professional guide to installing electrical cable tray systems per NEC Article 392. Covers support, securing cables, and fill calculations.

[Contact Us](#)



Cable Tray Systems: Requirements and Best Practices

Cable tray systems are structural components used to support insulated conductors and control, instrumentation, and communication cables. They are typically installed overhead, along

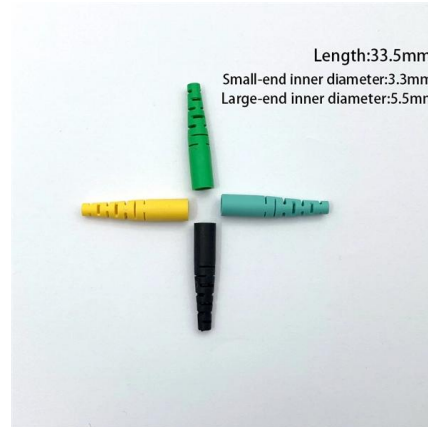
[Contact Us](#)



Cable Tray SHIB NAL

Cable trays are not raceways, but they are treated as a structural component of a facility's electrical system. Cable trays are a part of a planned cable management system to support, route, protect and

[Contact Us](#)



CTITechnicalB u l l e t i n

Many cable tray cables include a crush test as part of the listing and are rated to leave the cable tray unsupported for distances up to six feet. Communication cables in particular are marked to be

[Contact Us](#)

Ampacity of Power Cables Installed in Cable Trays

However, they also present challenges in terms of heat dissipation, which directly impacts the ampacity of the installed cables. Cable ampacity, the maximum

[Contact Us](#)



Safety Distance Between Cable Trays: What You Need

Learn the right safety distance between cable trays and ventilation or drainage systems. Follow these expert guidelines to ensure proper function and

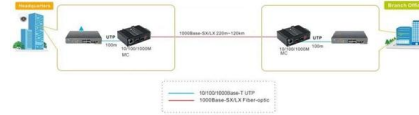
[Contact Us](#)



Route piping over or under cable trays? , Eng-Tips

Piping handbook referred to high temperature piping being routed over cable trays because the radiant heat could have an adverse effect on the

[Contact Us](#)



Cable Tray Design, Layout, and Overall Wiring Planning

Learn about effective Cable Tray Design and Layout for electrical systems. Our guide covers planning, material choice, safety,

[Contact Us](#)

NEC Article 392 Guide: Ensuring Compliance for Cable

To ensure that a cable tray is safe, all the bolts should be tight, and all the connections should also be clean. Without a properly bonded tray, the tray

[Contact Us](#)



Cable Tray Questions , Cable Tray Institute

Question 1: Can mechanical utility piping or tubing containing water or compressed air be installed in cable trays with electrical cables?
Answer: No. Cable trays are a support system for electrical cables,

[Contact Us](#)





A Guide to Installing and Supporting Electrical Cable Trays

This guide covers the critical steps, from selecting the right electrical cable tray and performing accurate cable fill calculations to managing a safe cable pull through

[Contact Us](#)



Cable Tray Systems: Requirements and Best Practices

This article explains the main requirements and good practices for cable tray systems, including tray types, materials, loading, supports, bonding, cable selection, and installation details.

[Contact Us](#)



How to Manage Cables in Cable Trays: Principles and Methods

Learn how to manage cables in cable trays effectively with our comprehensive guide for cable classification, protection, and installation to ensure electrical system safety and efficiency.

[Contact Us](#)



Cables Allowed in Tray

Tray can be manufactured in various types of material including aluminum, steel and fiber and other nonmetallic materials. Cable tray allows for the clean organization and routing of cable and offers

[Contact Us](#)



Best Practices for Installing Cables in Trays

Learn the best practices for installing cables in trays. This guide covers essential steps, technical requirements, and key details

[Contact Us](#)



Cable Tray Questions , Cable Tray Institute

The NEC in section 318-8 (b) indicates that in other than horizontal runs, cables shall be securely fastened to transverse members of the cable trays. For vertical installations, the cables may hang

[Contact Us](#)

Cable Tray Fill Rules (NEC 392)

Common industry practice (driven by ISA and IEEE standards, not NEC) is to run power cables and instrument/signal cables in separate trays,

[Contact Us](#)



Cable tray restrictions where power and data share a common tray

1. As a general practice my company does not run data and power in the same cable tray, but Article 392.6 (E) seems to allow it, "Multi-conductor cables rated 600V or less shall be

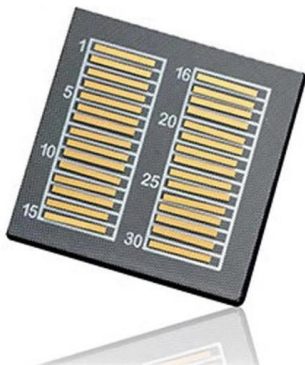
[Contact Us](#)

Precautions for Cable Tray Installation



Cable Tray Installation Guide The correct installation of cable trays is crucial for establishing a reliable and efficient cable system. It ensures that cables are

[Contact Us](#)



The Ultimate Guide to Tray Cables: Types, Applications and

When it comes to powering, automating and protecting facilities?from factories and petrochemical plants to data centers and high-rises?the right cable makes all the difference. Among the various

[Contact Us](#)

CABLE TRAYS GENERAL INFORMATION AND

Using cable trays as walkways can cause personal injury and also damage cable tray and installed cables. Performances of cable tray systems are dependent on

[Contact Us](#)



Cable Tray Technical Guide A practical guide to product selection and

Cable tray installed in a hazardous location must contain only those cables that are appropriate for this type of environment as defined in Chapter 5 of the NEC.

[Contact Us](#)



Safety Distances Between Cable Trays and Pipes

Cable trays and pipes serve as the backbone of electrical and fluid transportation systems in both residential and industrial

[Contact Us](#)



Contact Us

For datasheets, pricing, or custom fiber access solutions, please visit:
<https://frindel.es>