

# **Is a single cable used for a cable tray**





## Overview

---

In many cases there is more than one type of cable for a particular application, for instance both cables rated as tray cable (TC) and cables rated as metal clad (MC) can be used for 600- volt motor power cables. The purpose of a cable tray system is to support, route, and protect cable as part of the cable management system. Through NEMA and the Cable Tray Institute numerous articles, standards, and other general guidance can be found regarding the proper use and installation of cable tray systems. Cable tray is classified by the NEC (NFPA 70 the National Electrical Code) as a support system and not as a raceway. This is a critical distinction because it means the requirements for the cable contained in raceway is.



## Is a single cable used for a cable tray

---



### **Cable Tray Technical Guide A practical guide to product selection and**

**SOLID-BOTTOM CABLE TRAY** Providing additional cable protection, solid-bottom cable tray is sometimes preferred to support and protect numerous small instrumentation and control cables.

[Contact Us](#)

### **7 Types of Cable Trays: How to Choose the Right One**

Selecting the correct cable tray type is not arbitrary--it depends on a combination of cable characteristics, environmental conditions, and installation

[Contact Us](#)



### **Fiber Optic Cable Types: A Complete Guide**

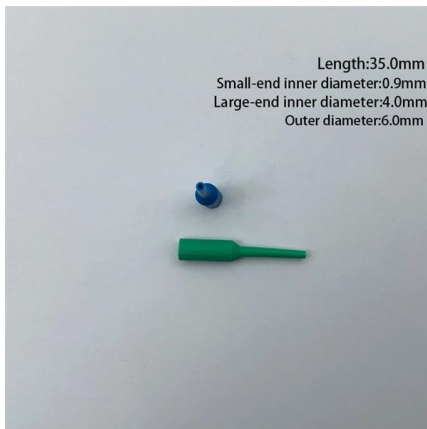
**Fiber Optic Cable Type FAQs** What are the three types of fiber optic cable? The three main types of fiber optic cable are single mode fiber, multimode

[Contact Us](#)



### **Installation Of Cable In Cable Trays: NEC, Safety**

Discussed are the installation in tray of single and multi-conductor insulated cables with design limitations, example calculations, equipment, and equipment usage



### **Cable Tray Technical Guide A practical guide to product selection and**

Cable tray is considered to be a system. It must provide continuous support for cables, and the electrical continuity of the cable tray system must be maintained.

[Contact Us](#)

### **Single Cable Cleat**

Used to restrain single cables (single core or multi-core) onto cable ladder, tray or strut systems. Open hinge system allows easy placement of the cable into the

[Contact Us](#)



### **Cable Tray Questions , Cable Tray Institute**

Are you aware of any industry standard that may mandate the use of cable trays under raised floors, particularly, power and signal cables?  
Answer: We are not aware of such industry standard, but

[Contact Us](#)



## The Ultimate Guide to Tray Cables: Types, Applications and

Tray cables (TC) are multi-conductor cables designed and rated for installation in cable trays and raceways or supported by messenger wires. Unlike standard electrical cables, tray cables feature

[Contact Us](#)



### Types of Cable Typically Used in Cable Tray

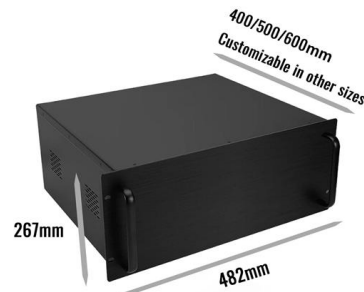
Type ITC - Instrumentation Tray Cable - (NEC Article 727) - These types of cables are instrumentation cables and are available in shielded or unshielded

[Contact Us](#)

### Cables Allowed in Tray

CABLES ALLOWED IN TRAY Cable tray is one of the most common methods of supporting wire and cable. There are many different types of cable tray including basket, ladder and solid-bottom. Tray

[Contact Us](#)



### Cable Tray Clamps

Shop for Cable Tray Clamps at Platt Rigid Conduit Cable Tray Clamp, Type Cable Tray Flange, Double Supporting Clamp, Used On Conduit Cable Tray, Conduit Rigid Size 1-1/4 Inch, 1-1/2 Inch, 2 Inch,

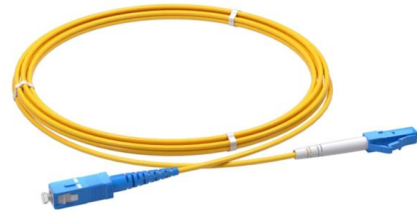
[Contact Us](#)



## Cable Tray Type Selection

Ladder cable tray is used for about 75 percent of the cable tray wiring system installations. It is the predominate cable tray type due to its many desirable features: A ladder cable tray without covers

[Contact Us](#)



## Cables Allowed in Tray

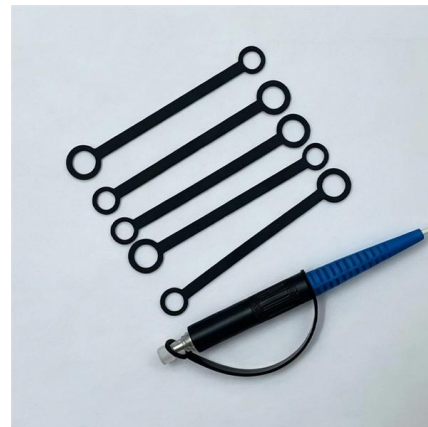
This test involves loading multiple cables in a vertical section of cable tray and igniting the cable at the base of the tray. The cable passes the test if it does not propagate the fire.

[Contact Us](#)

## 100+ Essential Questions Answered About Cable Trays:

Discover over 100 expert answers about cable trays, covering key topics like material selection, load capacity, installation methods, and maintenance.

[Contact Us](#)



## Cable Tray Fill Rules (NEC 392)

Cable Tray Fill and Installation per NEC 392 Cable tray types, fill rules for single-conductor and multiconductor cables, ampacity derating, separation

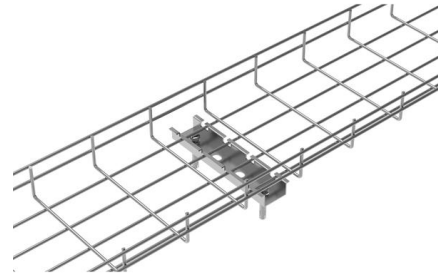
[Contact Us](#)

## Best Practices for Installing Cables in Trays



Quick Installation Checklist (Key Steps) Cable tray cable installation generally follows these steps: Inspect cables before

[Contact Us](#)



### Cable tray

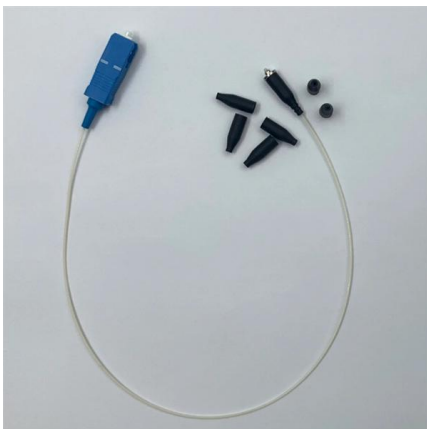
In the electrical wiring of buildings, a cable tray system is used to support insulated electrical cables used for power distribution, control, and communication.

[Contact Us](#)

### Explaining NEC Article 392 on Cable Trays

Cable trays are permitted for use in any type of building or structure, provided they comply with the relevant installation and support requirements

[Contact Us](#)



### Single conductors in cable tray with maintained space one diameter

Where single conductors are installed in a single layer in uncovered cable trays, with a maintained space of not less than one cable diameter between individual conductors, the ampacity of

[Contact Us](#)

### Cost of Fiber Optic Cable: Pricing Guide



(2026)

OS1 single-mode cable uses tight-buffered construction for indoor applications, while OS2 loose-tube construction is used for outdoor installations

[Contact Us](#)



### Explaining NEC Article 392 on Cable Trays

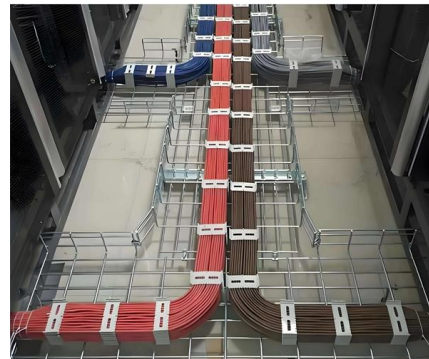
NEC Article 392 explains cable trays, their components, appropriate wiring methods for cable trays, and instances where they are and are not

[Contact Us](#)

### Cable Tray Systems

MP Husky Manufactures the following types of Cable Tray Systems: Aluminum, Mill Galvanized Steel, Hot-Dipped Galvanized Steel, Stainless Steel, Fiberglass,

[Contact Us](#)



## Contact Us

---

For datasheets, pricing, or custom fiber access solutions, please visit:  
<https://frindel.es>