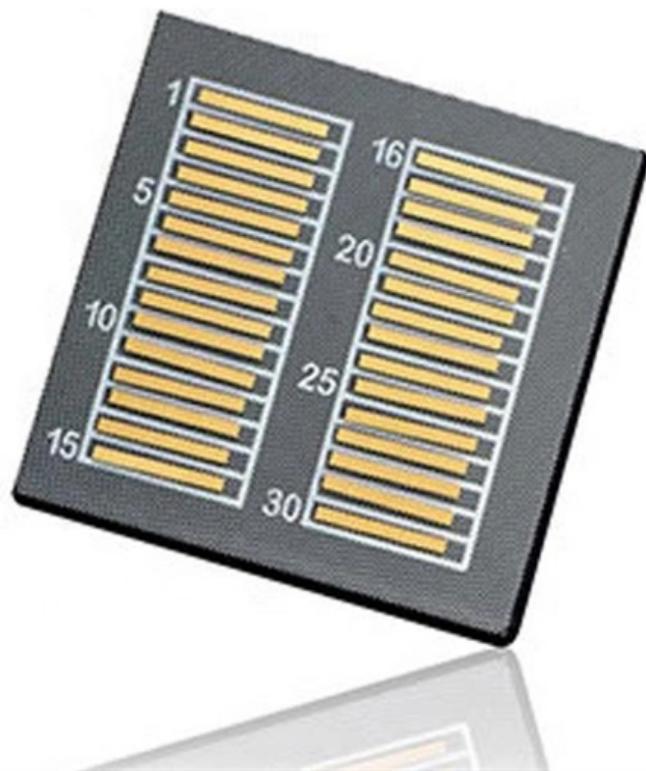


Is a fiber optic splice density of 0 12dB acceptable





Overview

Acceptable dB loss for fiber depends on the component you're measuring: a single mated connector pair should lose no more than 0. The loss spec for prepolished/mechanical splice connectors or multifiber connectors like MPOs will be higher (0. 2dB/km (typical SMF-28e+ at 1550nm), you've got 20dB of loss due to the glass path, but then the 10 splices would add another 5dB if your splices are 0. After measuring the loss of a fiber link, you now have to determine if that fiber link loss is acceptable or not.



Is a fiber optic splice density of 0 12dB acceptable



Guidelines On What Loss To Expect When Testing

In MM fibers, the OTDR will underestimate the loss considerably - as much as 3 dB in a 10 dB link - but the amount is unpredictable. In long distance SM links, the

[Contact Us](#)



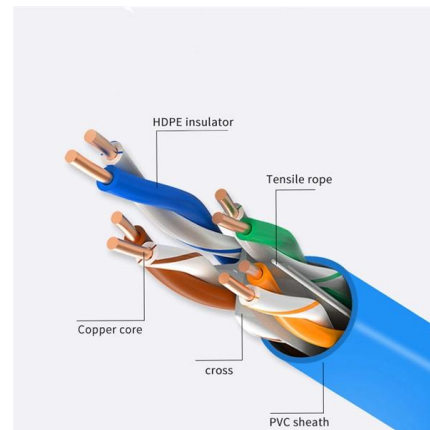
Good dB Loss for Fiber Optics -- Engineer's Guide , TTI Fiber

These values represent the industry standards for commonly used fiber optics, but the actual acceptable loss may vary depending on the specific requirements of your network, such as the

Fiber Optic Splitter: How It Works & Types Guide

This guide demystifies fiber optic splitters, explaining their design, operating principles, types, key specifications, and real-world applications.

[Contact Us](#)



Why is the acceptable loss on a splice so low?

I feel like the correct answer here is "optical design". Fiber engineers will design a build and account for losses. Typical cable attenuation, and splitter loss is pretty straightforward, but you only have a

[Contact Us](#)



Fiber Optic Cabling Loss Limits Explained - Trend

Learn about fiber optic cabling loss limits & how to calculate them. Gain insights from experts on acceptable loss for cabling projects & explore the

[Contact Us](#)



Multimode Splice Loss

When splicing similar fibers, typical splice loss values (less than 0.1dB fusion or 0.2 dB mechanical) are expected. However, when splicing dissimilar fibers, additional factors must be taken into account

[Contact Us](#)



What Is the Acceptable Splice Loss in Optical Fiber?

Acceptable splice loss in optical fiber is typically considered to be less than 0.1 dB for fusion splices and less than 0.3 dB for mechanical splices; however, this can vary depending on the

[Contact Us](#)

4-port 8-core LC wall-mounted fiber terminal box (empty frame)

Surface painted Scientific plate fiber Cold-rolled steel plate



Lifetime quality assurance Free shipping

Customizable for telecommunication

AshwinD24's gists · GitHub



GitHub Gist: star and fork AshwinD24's gists by creating an account on GitHub.

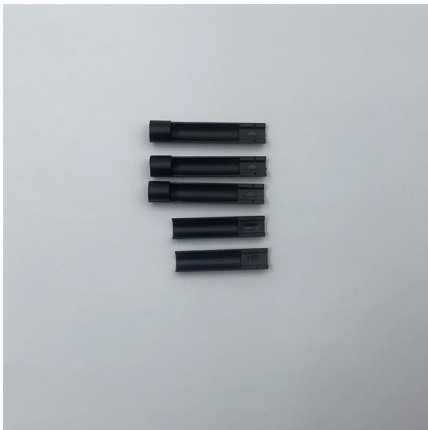
[Contact Us](#)



1X32 Cassette Type Fiber Optic Splitter

1X32 Cassette Type Fiber Optic Splitter, We also supply 1x2,1x4,1x8,1x16,1x32 plug-in cassette plc splitter to meet your different application.

[Contact Us](#)



Optical Fiber Termination Types Chart: SC, LC, FC, ST Comparison

Optical fiber terminations are the mechanical and optical interfaces that connect fiber cables to equipment, patch panels, and network hardware. They directly affect insertion loss, return

[Contact Us](#)



Fiber Optic Issues: Troubleshooting & Prevention Tips

Solve common fiber optic network problems--attenuation, damage, connector issues. Learn troubleshooting steps, tools, and prevention to ensure reliable

[Contact Us](#)





Fibre Optic Cabling Loss Limits Explained - Trend

Learn about fibre optic cabling loss limits & how to calculate them. Gain insights from experts on acceptable loss for cabling projects & explore the

[Contact Us](#)



Complete Guide: How To Terminate Fiber Optic Cable in 5 Easy

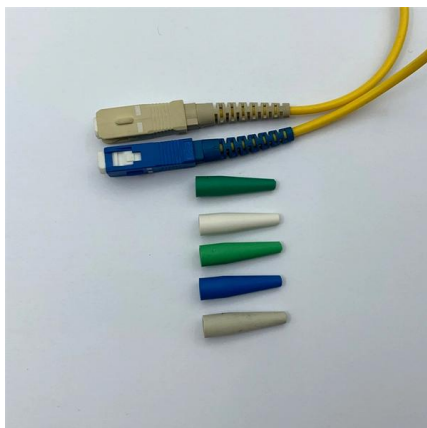
How to terminate fiber optic cable? Fiber optic termination is the process of preparing and connecting the end of a fiber optic cable so it can transmit data. Termination involves attaching either a removable

[Contact Us](#)

What is Optical Fibre Splice Loss?

The portion of the optical power that does not pass through the splice and is radiated out of the fibre is referred to as splice loss. Learn about Optical

[Contact Us](#)



Fiber Optics Loss Budget Calculation , Fluke Networks

You can either compare this loss value to the application requirement or calculate the expected loss based on how many connectors and splices are in the link along with the length of the fiber link and

[Contact Us](#)



Splice Loss Test Standards

For example Telcordia GR-326 (single mode optical connectors and jumper assemblies) calls for accuracy within ± 0.05 dB (section 5.2), and

[Contact Us](#)



What is the standard for splice loss in optical fiber?

The acceptable splice loss levels in optical fiber installations vary depending on the type of fiber being used and the specific application. However, as a general rule,

[Contact Us](#)



What Is Acceptable dB Loss for Fiber Optics?

Acceptable dB loss for fiber depends on the component you're measuring: a single mated connector pair should lose no more than 0.75 dB, a fusion splice should stay under 0.3 dB, and fiber

[Contact Us](#)



Equipped with a removable **Mounting Plate** inside the enclosure, enabling customized drilling and secure component mounting.



Fiber Optic Testing , Optical Power Meter

Fiber Optic Testing: The Fiber Optic Testing focuses primarily on the processes and equipment used during and after the installation of fiber optic cables and their

[Contact Us](#)



Optical Fiber Termination Types Chart: SC, LC, FC, ST Comparison

Compare optical fiber termination types, including SC, LC, FC, and ST. View our chart and learn how to choose the right connector for your network.

[Contact Us](#)



Fiber Optic Pigtail: The Complete Guide to Types, Splicing Methods

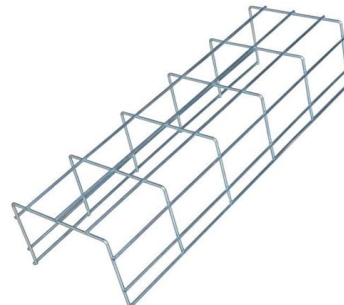
Confused about fiber optic pigtails--which connector type, which polish, fusion or mechanical splice? Our guide covers LC vs SC, APC vs UPC, splicing methods, and real-world use

[Contact Us](#)

10 Costly Fiber Optic Cable Installation Mistakes to Avoid in 2026

Avoid costly fiber optic installation failures. Learn the 10 critical mistakes in splicing, bend radius, connector cleaning, and cable handling that ruin enterprise network performance.

[Contact Us](#)



What Is the Typical Splice Loss in a Fusion Splice? , CMW

When using a fusion splicer, the typical splice loss is usually between 0.02 dB and 0.05 dB for single-mode fibre and slightly higher for multimode fibre. Anything below 0.1 dB is generally

[Contact Us](#)



What is the standard for splice loss in optical fiber?

The acceptable splice loss levels vary depending on the type of fiber and application, but generally range from less than 0.1 dB for single-mode fiber to 0.1 dB to 0.5 dB for multimode fiber.

[Contact Us](#)



Fusion Splice Loss Budget Explained: How Much Loss Is Acceptable

Quick answer: Industry acceptance threshold for a single fusion splice is 0.1 dB. Modern core-alignment splicers typically deliver 0.02-0.05 dB. Telcordia GR-1093 specifies 0.1 dB max per splice and 0.05

[Contact Us](#)

Fiber Optic Patch Cables: The Complete 2026 Buyer's Guide

Confused by LC, SC, MPO, UPC, and APC? This complete fiber optic patch cable guide covers connector types, single-mode vs multimode, insertion loss specs, and how to choose the right

[Contact Us](#)



Contact Us

For datasheets, pricing, or custom fiber access solutions, please visit:
<https://frindel.es>