

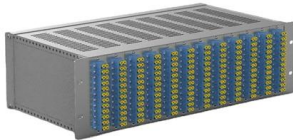
# **Intelligent Terminal Distribution Box Cooperation Proposal**





## Intelligent Terminal Distribution Box Cooperation Proposal

---



### **An Intelligent Integrated Terminal Based on Edge**

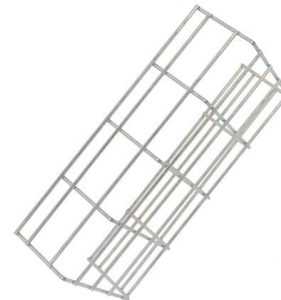
Download Citation , On Aug 13, 2021, Wenbin Chen and others published An Intelligent Integrated Terminal Based on Edge Computing for Power Distribution and Metering , Find, read and cite all the

[Contact Us](#)

### **Design of Intelligent Fusion Terminal System with Fog Computing**

Abstract--The intelligent fusion terminal in the distribution area usually adopts the mode of cooperation between the cloud and the edge, and the workload of manual operation and maintenance is large.

[Contact Us](#)



### **Central-distributed Operation Simulation of Distribution Network**

Aiming at the problems of short-term overload of power distribution equipment capacity, large operation loss and low accommodation of new energy under the independent operation mode

[Contact Us](#)

### **Collaborative task allocation method for protection and control**

Therefore, a collaborative task allocation method for protection and control intelligent terminals (PCIT) in distribution networks considering elastic allocation of resources is proposed in this paper.

[Contact Us](#)



### **Research on intelligent distribution terminal based on adaptive access**

A smart distribution terminal scheme based on adaptive access is proposed to address this issue. This method can achieve adaptive access between various modules within the smart

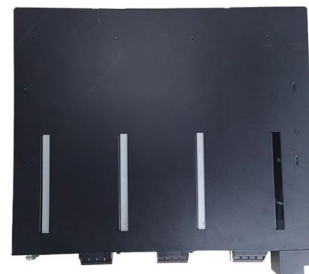
[Contact Us](#)



### **A software and hardware design of intelligent**

The intelligent terminal pair can realize full data collection, full control and full fusion, and real-time exchange of key operation data with the power

[Contact Us](#)



### **Intelligent Integrated Terminal Solution , Huawei Enterprise**

Huawei considers the status quo and development trend of low-voltage power distribution networks and adheres to the design concept of "platform-hardware and app-based software" to develop the smart

[Contact Us](#)





## IoT-Based Low-Voltage Power Distribution System

The intelligent distribution station area is based on the intelligent perception device as the core, supporting intelligent low-voltage equipment in

[Contact Us](#)



## Configuration of Intelligent Terminals in Distribution Network

With the continuous advancement of smart grid construction, the coupling degree between distribution information system and physical system is increasing, and t

[Contact Us](#)

## Design of Distributed Intelligent Terminal System of Electric

With the construction of the energy internet and the maturity of the electric Internet of Things technology, intelligent terminal products in the distribution network are widely used in power

[Contact Us](#)



## Analysis on the Construction and Application of Intelligent

For a long time, China's low-voltage distribution network lacks effective operation monitoring means, high failure rate, difficult fault finding, inaccurate low-voltage topology and phase

[Contact Us](#)



### **Feeder automation technology of intelligent distribution terminal**

This paper proposes a feeder automation technology for intelligent power distribution terminals based on a 5G low-power secure communication module, the distributed power load parameter analysis model

[Contact Us](#)



### **Enhanced intelligent terminal unit under smart distribution network**

As an important part of the smart grid, the smart distribution network requires the intelligent terminal unit (ITU) to realize real-time electrical parameters acquisition and effective

[Contact Us](#)



### **(PDF) Research on Intelligent Terminal Based on Distribution Multi**

By designing a four-in-one intelligent terminal device for distribution multi-service integration, it can monitor power equipment and collect power consumption information of different

[Contact Us](#)



### **WO2024255014A1**

The intelligent distribution box comprises multiple electrical devices, the electrical devices at least comprising a common power supply module, a main input intelligent circuit breaker, at least one

[Contact Us](#)





## Design and implementation of intelligent monitoring terminal for

An intelligent monitoring terminal for power distribution room based on edge computing is designed in this paper, which is important for the power distribution Internet of Things. Compared

[Contact Us](#)



## (PDF) Design of Embedded Intelligent IoT Terminal for

1 Design of Embedded Intelligent IoT Terminal for Precise Regulation of Integrated Energy Jing Wang 1a\*, Xiaojian Zhang2b, Yongshan Guo1c,

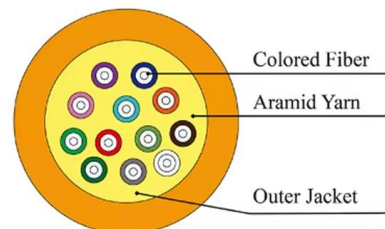
[Contact Us](#)



## Cooperation between Intelligent Autonomous Vehicles to enhance

Therefore, we proposed a reactive cooperation which contributes towards a distributed IAV2IAV collision management in the container terminal. Such cooperation can be performed

[Contact Us](#)



## Software Architecture Analysis of Intelligent Distribution and

As the terminal unit of state perception, intelligent decision-making and control subject in the distribution Internet of things, intelligent distribution and transformation terminal is the foundation

[Contact Us](#)





## Intelligent Distribution Terminal Market Report, Share, 2035

The intelligent distribution terminal market also includes sales of smart sensors, communication modules, automation controllers, monitoring devices, software

[Contact Us](#)



### Configuration of Intelligent Terminals in Distribution Network

With the continuous advancement of smart grid construction, the coupling degree between distribution information system and physical system is increasing, and the degree of distribution automation will

[Contact Us](#)



### Design of Intelligent Fusion Terminal System with Fog Computing

To this end, a large-capacity CPU-based intelligent fusion terminal system with fog computing capability is proposed in the distribution station area. Fog computing is based on the concept of cloud computing.

[Contact Us](#)



### Enhanced intelligent terminal unit under smart distribution network

The smart grid is playing a key role to enable smart cities and smart Internet of things. As an important part of the smart grid, the smart distribution network requires the intelligent terminal unit

[Contact Us](#)





## Design and Application of Smart Distribution Station Area Based on

In order to enhance the practical application of the intelligent fusion terminal in smart distribution station areas, a design method for practical application of smart distribution station area is proposed based

[Contact Us](#)



## Research and Implementation on Intelligent Terminal Virtualization

This paper analyzes the problems and development trend of intelligent distribution transformer terminals in the new situation, based on the development of virtualization technology; it

[Contact Us](#)

## Green cooperative transportation solutions in terminal distribution

To promote optimal resource allocation, improve utilization efficiency, and reduce environmental pollution, we propose integrating dispersed transportation resources in the final



[Contact Us](#)



## Enhanced intelligent terminal unit under smart distribution network

Therefore, we propose a novel enhanced intelligent terminal unit (E-ITU) under the smart distribution network.

[Contact Us](#)



## Enhanced intelligent terminal unit under smart distribution network

As an important part of the smart grid, the smart distribution network requires the intelligent terminal unit (ITU) to realize real-time electrical parameters

[Contact Us](#)



## Contact Us

---

For datasheets, pricing, or custom fiber access solutions, please visit:  
<https://frindel.es>