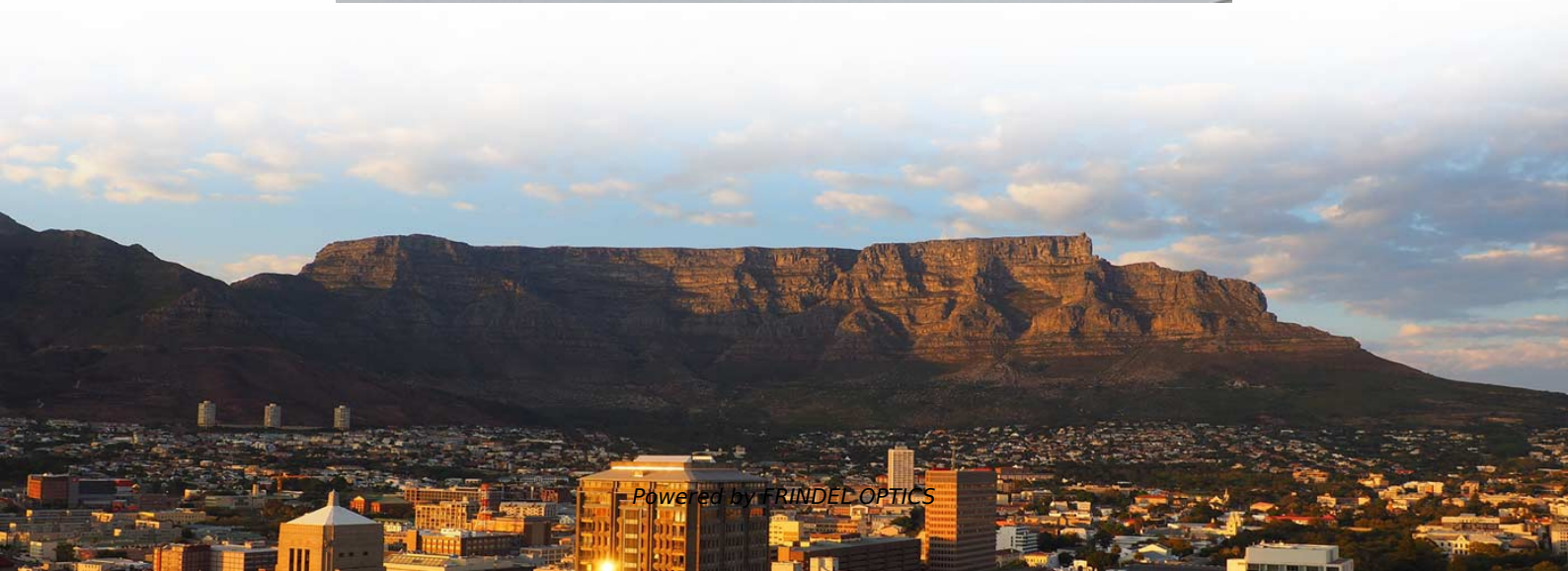


Intel X722 Network Card Optical Module





Overview

The Intel Ethernet Network Adapter X722 features WARP RDMA for high data throughput, low-latency workloads and low CPU utilization. The controller connects to available 10 GbE and 1 Gigabit Ethernet LOM adapter cards and onboard connectors to provide a comprehensive 1 GbE / 10 GbE. □Fast speed and stable performance□The fiber optic network card is 10 gigabit network card,fast speed,you can enjoy going by like the wind speed. The Intel® C620 Series Chipset Platform Controller Hub Datasheet reflects the silicon device capability, while this document reflects what is actually supported in the software for a given release. Page 1 ThinkSystem Product Guide The Intel Ethernet Connection X722 is a network controller embedded into the Intel C624 "Lewisburg" PCH chipset of Lenovo ThinkSystem servers. After that we needed to validate, and based on our validation, X722-DA4 is Open Optic and only supports 10G single-rate optics and even 1/10G dual-rate optics aren't guaranteed to work at 10G. The X722 is ideal for Software Defined Storage solutions, NVMe-over-Fabric solutions and Virtual Machine migration acceleration.



Intel X722 Network Card Optical Module



Lidkew Dual SFP+ Network Card with Intel X722 Chip X722DA2

Lidkew Dual SFP+ Network Card with Intel X722 Chip X722DA2, 10Gb Optical Ports Fiber Optic Network Adapter NIC for Server (with 2 Pieces of Multimode Optical Module)

[Contact Us](#)

Intel X722 Integrated 10 GbE Controller for Lenovo ThinkSystem

Product Guide The Intel Ethernet Connection X722 is a network controller embedded into the Intel C624 "Lewisburg" PCH chipset of Lenovo ThinkSystem servers. The controller connects to available 10

[Contact Us](#)



Lenovo Intel Ethernet Connection X722 Product Manual

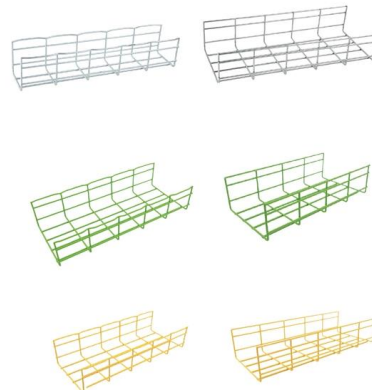
Page 1 ThinkSystem Product Guide The Intel Ethernet Connection X722 is a network controller embedded into the Intel C624 "Lewisburg" PCH chipset of Lenovo

[Contact Us](#)

Intel X722-DA2 X722DA2 10Gigabit PCIe 3.0x8 2-Port Optical Fiber

Intel X722-DA2 X722DA2 10Gigabit PCIe 3.0x8 2-Port Optical Fiber Ethernet Card Digicom Deals (158) 100% positive

[Contact Us](#)



X722-FSM-External.book

With the X722 adapters, both the firmware (device NVM image) and network drivers are field-serviceable, and the NVM image and network driver are updated as a matched set.

[Contact Us](#)

Intel® Ethernet Network Adapter X722

The X722 is one of the Intel® Ethernet 700 Series Network Adapters. These adapters are the foundation for server connectivity, providing broad interoperability, critical performance optimizations, and



[Contact Us](#)



Welche Optischen Module funktionieren mit der Intel®

Folgen Sie den Schritten unten, um validierte Glasfaser und Kabel für die Intel® Ethernet Netzwerkadapter X722 zu identifizieren: Öffnen Sie die Intel® Produktkompatibilitäts-Tool.

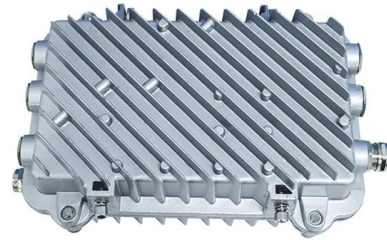
[Contact Us](#)



Intel X722-DA2 Datasheet

The X722 is one of the Intel Ethernet 700 Series Network Adapters. These adapters are the foundation for server connectivity, providing broad interoperability, critical performance optimizations, and

[Contact Us](#)



x722da4fh sfp+ compatibility

Our engineers confirmed that we can only recommend the E10GSFPSRX for the Intel® Ethernet Network Adapter X722-DA4 since SFPLR supports 1GbE media-SFP+ SR/LR multi-speeds

[Contact Us](#)

Unterstützung für Intel® Ethernet Network Adapter X722er-Reihe

Der Inhalt dieser Seite ist eine Kombination aus menschlicher und computerbasierter Übersetzung des originalen, englischsprachigen Inhalts. Dieser Inhalt wird zum besseren Verständnis und nur zur

[Contact Us](#)



Lenovo Intel Ethernet Connection X722 Product Manual

The Lenovo Intel Ethernet Connection X722 is a high-performance network controller that offers advanced features for data center, cloud, and mobile applications. It supports VXLAN/NVGRE

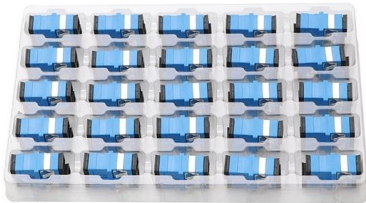
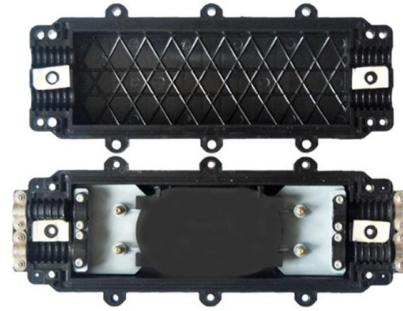
[Contact Us](#)



Intel X722-DA2 Datasheet

Intel X722-DA2 10Gbps Dual Port SFP+ Ethernet PCI Express 3.0 x8 Network Adapter The Intel Ethernet Network Adapter X722 features WARP RDMA for high data throughput, low-latency

[Contact Us](#)



Which Optic Modules work With the Intel® Ethernet Network Adapter

Resolution Follow the steps below to identify validated Optics and cables for the Intel® Ethernet Network Adapters X722: Open the Intel® Product Compatibility Tool. Select 700 Series.

[Contact Us](#)

Support for Intel® Ethernet Network Adapter X722-DA2

Support product highlights, featured content, downloads and more for Intel® Ethernet Network Adapter X722-DA2

[Contact Us](#)



Lenovo Group Limited 7ZT7A00547 Lenovo ThinkSystem 10Gb 4

Shop (Lenovo ThinkSystem 10Gb 4-Port SFP+ LOM) by Lenovo Group Limited, at ITO Solutions. Warehoused Items, Same Day Shipping.

[Contact Us](#)

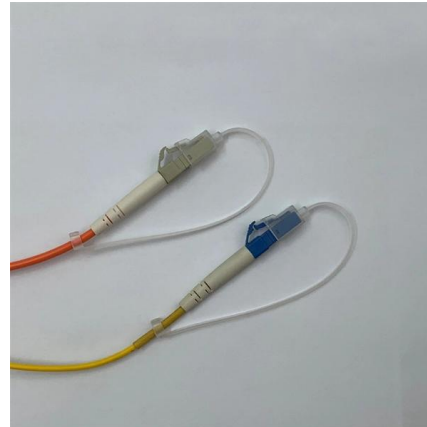




KALEA-INFORMATIQUE PCIe Controller Card 10G LAN Fibre SFP+ 2 Ports X722

KALEA-INFORMATIQUE PCIe Controller Card 10G LAN Fibre SFP+ 2 Ports X722-DA2 with Intel Confidential Chipset - 10GbE Ethernet Network Adapter X722

[Contact Us](#)



Networking Adapters for HP Workstations

The HP Z Dual-Port 10GbE Network Module is a 10GBASE-T adapter utilizing the Intel® X722 MAC and X557-AT2 PHY pairing to deliver full line-rate performance, utilizing CAT 6A UTP cabling (or better)

[Contact Us](#)

Support for Intel® Ethernet Network Adapter X722 Series

Supported Operating Systems for Retail Intel® Ethernet Adapters Last Reviewed 04/14/2026
Product Information & Documentation

[Contact Us](#)



Intel X722 Integrated 10 GbE Controller for Lenovo

This product guide provides essential presales information to understand the X722 controller and ThinkSystem LOM adapter offerings and their

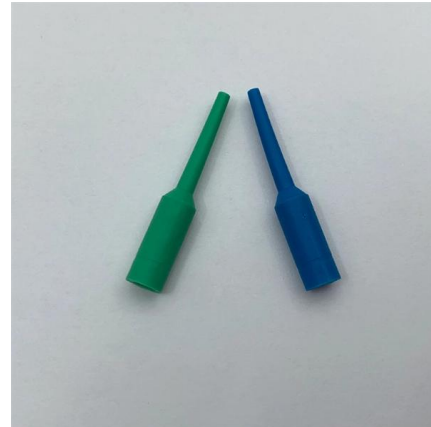
[Contact Us](#)



Update Firmware Intel® Ethernet Connection X722

Hi! I have Intel® Server Board S2600WFT with Intel® Ethernet Connection X722 network adapter. Following this page

[Contact Us](#)



X722-DA2 Intel 10Gb/s PCI-E 3.0 X8 2-Port Optical Fiber Ethernet Card

Intel X722-DA2 X722DA2 10Gigabit PCIe 3.0x8 2-Port Optical Fiber Ethernet Card \$215.00

[Contact Us](#)

10Gb Quad SFP+ Network Card with X722 Chip X722DA4,4 Optical

About this item ?Fast speed and stable performance?The fiber network card is 10Gb network card,fast speed,you can enjoy going by like the wind speed.With Intel X722DA4 chip,stable performance,low

[Contact Us](#)



Lenovo Intel Ethernet Connection X722 Product Manual

Summary of Contents for Lenovo Intel Ethernet Connection X722 Page 1 ThinkSystem Product Guide The Intel Ethernet Connection X722 is a network

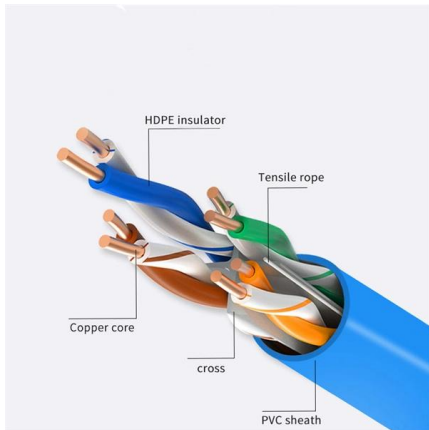
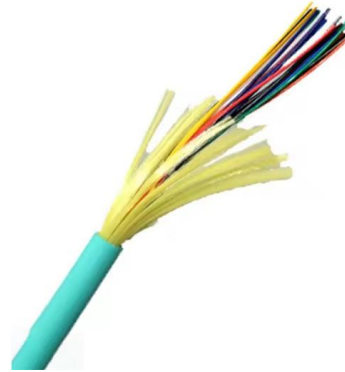
[Contact Us](#)



Support for Intel® Ethernet Network Adapter X722 Series

Support product highlights, featured content, downloads and more for Intel® Ethernet Network Adapter X722 Series

[Contact Us](#)



Intel X722-DA2 X722DA2 10Gigabit PCIe 3.0x8 2-Port Optical Fiber

10G Network Kit 2x Intel X710-DA2 Card 10Gb PCIe 3.0 x8 Ethernet SFP+ NIC Server

[Contact Us](#)

Contact Us

For datasheets, pricing, or custom fiber access solutions, please visit:
<https://frindel.es>