

Instrument bridge connecting bolt specifications





Overview

BS EN 1993-1-8 All references in this article refer to these documents, as implemented by their respective National Ann.



Instrument bridge connecting bolt specifications



Steel Bridge Design Handbook Vol

FOREWORD This handbook covers a full range of topics and design examples intended to provide bridge engineers with the information needed to make knowledgeable decisions regarding the

[Contact Us](#)

ASSEMBLY OF STRUCTURAL CONNECTIONS USING HIGH

The Engineer will observe the installation and tightening of bolts to determine that the selected tightening procedure is properly used and will determine that all bolts are tightened.

[Contact Us](#)



A Basic Guide to Bridge Measurements (Rev

Achieving the most accurate bridge measurements with precision analog-to-digital converters (ADCs) requires a detailed understanding of how these sensors work, how they are calibrated, how they

[Contact Us](#)



Mounting arrangements Instrument hook-ups for the process industry

The forces required for mounting and dismounting of instrument hook-ups should be applied as close to the process side as possible. For the mounting and dismounting only the designated spanner flats



Instrument Junction Box Specification

Instrument junction box should have certification to exhibit proper hazardous area protection and other specification.

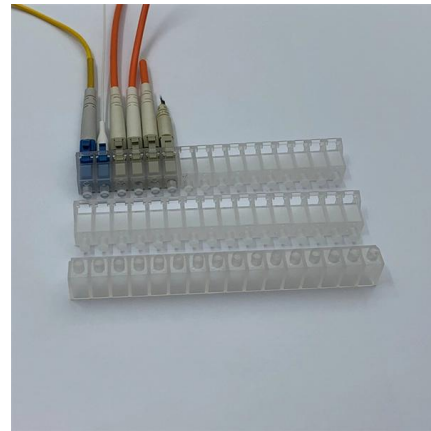
[Contact Us](#)



A Study of the Bolt Connection System for a Concrete Barrier

Thus, considering the economic advantages of labor-saving and duration shortening, the vertically connected barrier was found to be appropriate for a modular bridge connection system.

[Contact Us](#)



Instrument Connection Specifications

For each instrument connection type, the BOQ lists items required along with their sizes and quantities, noting that some ratings and lengths will be determined

[Contact Us](#)





Structural Bolt Details Types Grades and Applications

Structural bolts are high-strength fasteners used to connect steel members in buildings, bridges, and industrial structures. They provide strong,

[Contact Us](#)



Instrument Tube Fitting Installation Manual

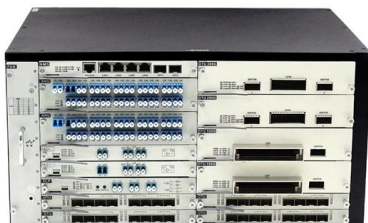
Again no threading; minimum chance of scale, metal chips, foreign particles in system. Easier Assembly and Disassembly - Every tube connection serves as union. Tube connections can be reassembled

[Contact Us](#)

High-Strength Bolts for Bridges

A copy of the FHWA supplemental specifications contained in the memorandum is included in the appendix. The rationale behind the pertinent specifications is discussed in this paper.

[Contact Us](#)



Part 3, Hull Construction and Equipment

The use of aluminum alloys in hull structures will be considered upon submission of a specification of the proposed alloys and their proposed method of fabrication.

[Contact Us](#)



RESEARCH DESIGNS AND STANDARDS ORGANISATION

SPECIFICATION OF CONNECTING ROD BOLT FOR TAMPING ARM OF TAMPING UNIT CENTER BORE AND NUT WITH WASHER OF CSM (Part no. 2E31.04) 1.0 Scope: This specification covers

[Contact Us](#)



Microsoft Word

Specification for Structural Joints Using High-Strength Bolts August 1, 2014 (includes April 2015 Errata) Supersedes the December 31, 2009 Specification for Structural Joints Using High-Strength Bolts.

[Contact Us](#)

Microsoft Word

All instruments connected to control room and remote unit control panels of related systems shall be electronic, SMART type. For remote control application, remote telemetry, telecontrol and data

[Contact Us](#)



Structural Bolting Handbook 2016

This 2016 edition of the Structural Bolting Handbook is based principally upon the June 2014 edition of the RCSC Specification for Structural Joints Using High-Strength Bolts, cited by the

[Contact Us](#)



RESEARCH DESIGNS AND STANDARDS ORGANISATION Manak

TM/ 0510 REV-2. 5.0 Material: The Connecting rod bolt for tamping unit shall be made from Steel of Grade 709M40 (EN-19) conforming to BS:970 Part-II, Specification of direct hardening alloy steel nut

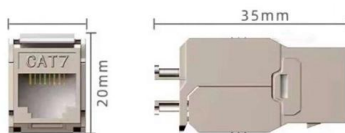
[Contact Us](#)



583 Gauge Wire Ferrule Connections

583 Gauge Wire Ferrule Connections Chapter 8 discusses the importance of proper instrument connections through pipes and fittings, emphasizing safety and

[Contact Us](#)



SPECIFICATION & FEATURES

DESCRIPTION: Orbit Industries' Intersystem Bonding Bridge attaches to any wall to form reliable bonding between power and communication grounding systems.

[Contact Us](#)





Field Instrument Junction Box Standards

This document provides standards for installing junction boxes and terminating cables in field instruments. It outlines general requirements, labeling, earthing,

[Contact Us](#)

ESDEP LECTURE NOTE

The basic principles of connection design apply to all types of bridge. It is not possible to cover specific details for all the different bridges in one lecture.

[Contact Us](#)



CHAPTER 2 STRUCTURAL STEEL FASTNERS AND CONECTIONS

These bolts are recommended for light structures subjected to static loads and for the secondary members in a structure but not recommended for structures subjected to vibration and fatigue.

[Contact Us](#)

ATTACHMENT D

Line Mounted Instrument - Instrument installed in a connection attached to the process piping system (e.g., temperature indicators, temperature elements, temperature switches).
Local Mounted

[Contact Us](#)





High-Strength Bolts for Bridges

The supplemental specifications were written for AASHTO M164 (ASTM A325) bolts but it is recognized that similar specifications are needed for A490 bolts and other alternate fasteners. The supplemental

[Contact Us](#)

RESEARCH DESIGNS AND STANDARDS ORGANISATION

TM/ 0510 REV-2. 5.0 Material: The Connecting rod bolt for tamping unit shall be made from Steel of Grade 709M40 (EN-19) conforming to BS:970 Part-II, Specification of direct hardening alloy steel nut

[Contact Us](#)



ASSEMBLY OF STRUCTURAL CONNECTIONS USING HIGH-STRENGTH BOLTS

B) 7/8" Diameter ASTM A325 bolts SEC 407.06(b) Field connections shall be made with high-strength 7/8 inch diameter bolts fabricated in accordance with ASTM A325, unless otherwise specified.

[Contact Us](#)

Field Manual for Structural Bolting

The intent is to assist engineers, inspectors, and construction workers in designing, installing, and inspecting bolted connections to meet current specifications.

[Contact Us](#)





Contact Us

For datasheets, pricing, or custom fiber access solutions, please visit:
<https://frindel.es>