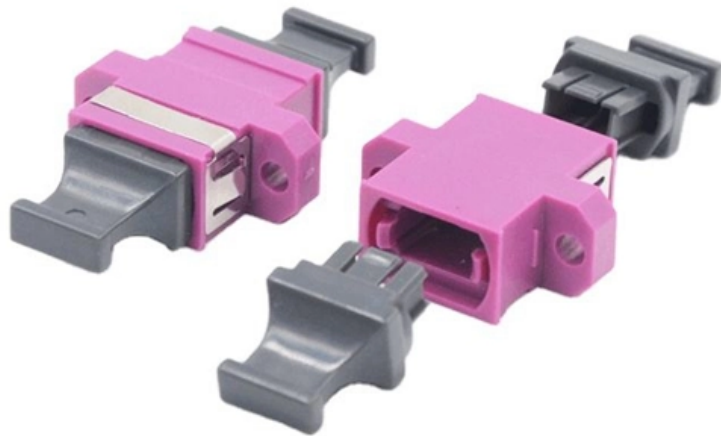


# Instrument Bridge Structure





## Overview

---

The bridge is a vital structural element in acoustic stringed musical instruments, such as violins, cellos, and acoustic guitars, that elevates and supports the strings above the soundboard while transmitting their vibrational energy to the instrument's body for. In the pressure bridge, the string is fastened at one end to a tuning peg or a wrest pin and at the other to a pin or a tailpiece; it passes. Finally we will examine damage produced by normal vibration of the top plate of the violin and hence give radiated sound. The bridge looks something like a typical adjustable arch top bridge, but it is actually quite different.



## Instrument Bridge Structure

---



### Music 101: What Is a Bridge in Music?

The majority of songs contain some combination of a verse, chorus, and a bridge, combined into an overall song structure. Songwriters often place

[Contact Us](#)

### Mastering Song Structure: Intro, Verse, Chorus & Bridge

Unravel the essence of musical storytelling with this exploration of song structure - from the captivating intro to the heart-pounding chorus and the bridges that

[Contact Us](#)



### Bridge (instrument)

A bridge is a device that supports the strings on a stringed musical instrument and transmits the vibration of those strings to some other structural component of the instrument typically

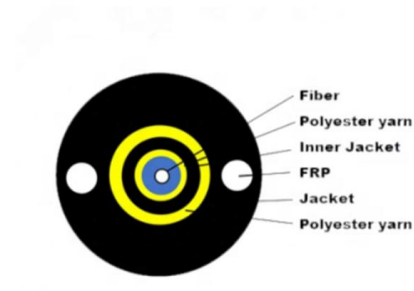
[Contact Us](#)



### Bridge

A bridge is a structure designed to span an obstacle, such as a river or railway, allowing vehicles, pedestrians, and other loads to pass across. Most bridges

[Contact Us](#)



### Song structure

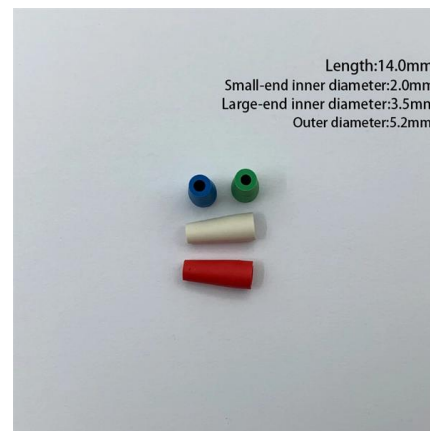
Song structure is the arrangement of a song, and is a part of the songwriting process. It is typically sectional, which uses repeating forms in songs. Common

[Contact Us](#)

### Bridge (instrument) , EPFL Graph Search

A bridge is a device that supports the strings on a stringed musical instrument and transmits the vibration of those strings to another structural component of the instrument--typically a soundboard,

[Contact Us](#)



### Bridge (instrument)

The bridge in stringed musical instruments typically consists of several key structural elements that support the strings and interface with the instrument's body.

[Contact Us](#)





## Breaking Down Essential Parts of a Bridge Structure

Learn the complexities of bridge construction with this glossary of 20 common structural components used on bridges.

[Contact Us](#)



## How to Adapt a Bridge for Different Instrumentation and Arrangements

Start with a clear understanding of the original bridge's purpose and structure. Experiment with different instrument combinations to find the best fit for your arrangement.

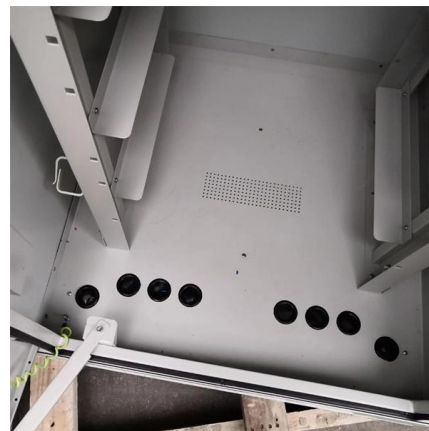
[Contact Us](#)



## The Bridge, The Soundpost and The Bass Bar for Violin Family Instruments

11.1 Introduction The bridge, the soundpost and the bass bar of the violin and of all instruments from the violin family have complementary acoustical and mechanical functions in transmitting string vibration

[Contact Us](#)



## Demystifying the Stringed Instrument Bridge

The bridge creates tension on the strings by pressing them upward. Those strings are anchored from the peg box on the neck (the

[Contact Us](#)



Two separate bridge feet, like those on the bridge of a violin family instrument, allow cross dipole and long dipole movements that are more complex. The two feet can

[Contact Us](#)



### Bridge (instrument)

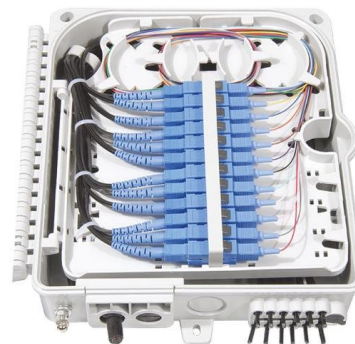
A bridge is a device for supporting the strings on a stringed instrument and transmitting the vibration of those strings to some other structural component of the instrument in order to transfer the sound to

[Contact Us](#)

### Bridge , Instrumental, Structure, Form , Britannica

In the tension bridge, one end of the string is fastened to a tuning peg or wrest pin and the other to the bridge itself, which is glued to the soundboard (as in the guitar and the lute).

[Contact Us](#)



### Instrumentation in Civil Engineering: A Complete Guide

Instrumentation ensures structural safety in civil engineering projects, providing real-time monitoring for bridges, tunnels, dams, and other infrastructure.

[Contact Us](#)





## Bridge (instrument)

Bridges may consist of a single piece of material, most commonly wood, that fits between the strings and the resonant surface. Alternatively, a bridge may consist of multiple parts. One common form is a

[Contact Us](#)



## Understanding Ancient String Instrument Bridge Construction

Ancient string instrument bridge construction exemplifies the ingenuity and craftsmanship that shaped musical expression across civilizations. These early techniques reflect a profound understanding of

[Contact Us](#)

## The Bridge, The Soundpost and The Bass Bar for Violin

The bridge, the soundpost and the bass bar of the violin and of all instruments from the violin family have complementary acoustical and mechanical

[Contact Us](#)



## What Is a Bridge in a Song? Song Structure Essentials

Wondering what a bridge in a song is? Learn the essential secrets of songwriting, including what a bridge does, how it is used with song structure, and

[Contact Us](#)



## Bridge Structures: Sage Journals

Bridge Structures - Assessment, Design and Construction - aims to present the transformation of theoretical knowledge into guidelines and

[Contact Us](#)



## Bridge Instrumentation and Monitoring for Structural Diagnostics

The reliability of structural evaluation for objective bridge management is determined by the dependable performance of all the system components. Although instrumentation and monitoring procedures

[Contact Us](#)

## Bridge (instrument)

A bridge is a device that supports the strings on a stringed musical instrument and transmits the vibration of those strings to another structural component of the instrument--typically a soundboard,

[Contact Us](#)



## Bridge Engineering - Types of Bridges

Bridge Engineering -Types of Bridges Over the last several thousand years, bridges have played one of the most important roles in the development of

[Contact Us](#)

## Chapter 11 The Bridge, The Soundpost and



## The Bass Bar for

three components of violin structure and the effect of materials on their function. Finally we will examine damage produced b.

[Contact Us](#)



## Components Of Bridge , Parts Of Bridge , Structural

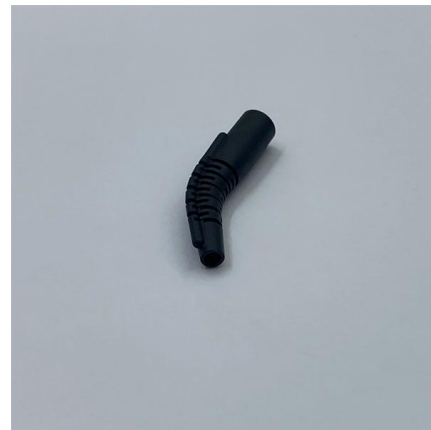
The portion supports the deck slab and girder and connects one sub-structure to the other. That means all the elements of the bridge attached to a

[Contact Us](#)

## Song Structure: The Blueprint of Music [+Examples]

These parts are typically labeled as verse, chorus, bridge, pre-chorus, etc. Song structure may also be referred to as the "form" of the song, especially in

[Contact Us](#)



## Contact Us

---

For datasheets, pricing, or custom fiber access solutions, please visit:  
<https://frindel.es>