

# **Installing the ground-level distribution box**





## Overview

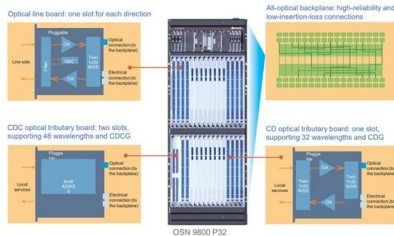
---

Wiring Connections Strip wires → connect to terminals (phase, neutral, ground) → arrange neatly. Whether in a home or an industrial facility, this box keeps your electrical setup organized, functional, and efficient. An electrical distribution box, also known as a power distribution box, panelboard, or consumer unit, is the core of an electrical system. 7 meters) high makes it easily accessible without the need to bend or stretch excessively. 26 mm<sup>2</sup> (10 AWG) ground wire must be used, and in all other markets a 6 mm<sup>2</sup> must be used. According to the "Code for Acceptance of Construction Quality of Building Electrical Engineering" GB50303-2002, the vertical distance between the bottom surface of the fixed stainless steel enclosure ip67 and the ground should be greater than 1.



## Installing the ground-level distribution box

---



### Ground Transformer Box Installation Best Practices , CANWIN

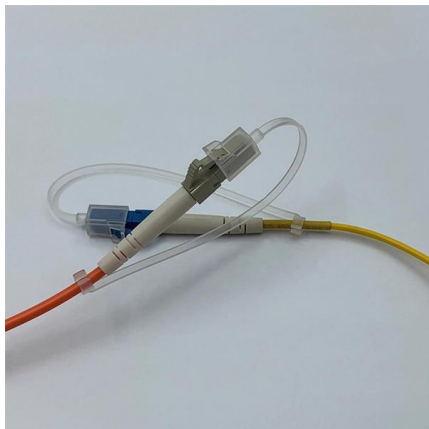
Level the ground: Ensure the ground is level to provide a stable foundation for the transformer box. Leveling the ground prevents structural instability and uneven load distribution,

[Contact Us](#)

### The Complete Guide to Distribution Box: Installation, Types & More

Proper installation of a distribution box requires careful planning and adherence to electrical codes. While major installations should always involve qualified electricians, understanding

[Contact Us](#)



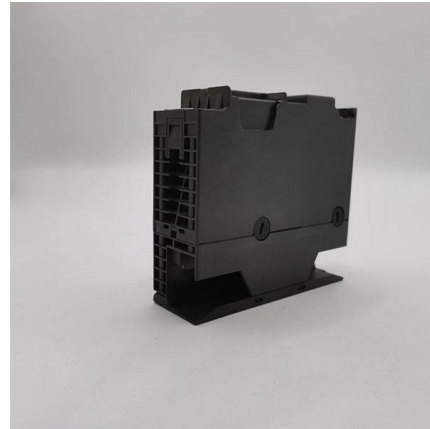
### Installation Height And Location Selection Requirements For Ground

Choosing a suitable installation location requires comprehensive consideration of multiple factors. The stainless steel surface mount electrical box should be installed in a safe, dry, well-ventilated, and

[Contact Us](#)

### Key Points Of Installation And Collocation Of Distribution Box In

1. The power distribution system at the construction site shall be distributed in different levels. The main distribution box (or distribution room) shall be set up. The distribution box shall be set



### **How To Install a Ground Bar In a Sub Panel or Main Load Center**

How To Install a Ground Bar In a Sub Panel or Main Load Center Benjamin Sahlstrom 479K subscribers Subscribe

[Contact Us](#)



### **Requirements And Specifications For Installation Of**

The installation requirements and specifications of Distribution box involve many aspects, including site selection, fixing method, wiring specifications

[Contact Us](#)



### **The Complete Guide to Distribution Box: Installation, Types & More**

Blog The Complete Guide to Distribution Box: Installation, Types & More By Admin Aug 2, 2025 No Comments # distribution box Introduction Electrical systems power our homes, offices, and

[Contact Us](#)





## What is the Ideal Installation Height for a Distribution Box

The proper installation of a distribution box involves placing it at the right height to ensure safety and convenience. Mounting it 4.5 to 5.5 feet (1.4 to 1.7 meters) high

[Contact Us](#)



## Small distribution box installation steps

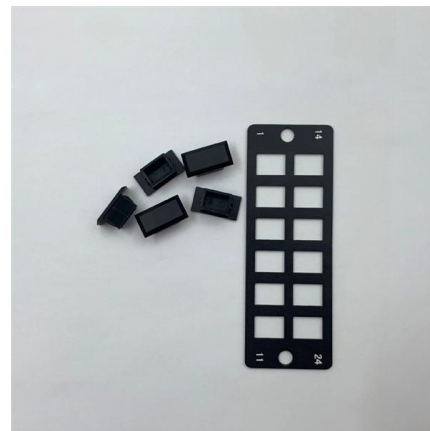
The steps to install a small distribution box include selecting a suitable location, installing the base, placing the distribution box, connecting the

[Contact Us](#)

## Electrical Box Ground Wire Connectors & Connections

How to make proper & safe electrical ground wiring connections in the box: This article describes options for connecting a metal electrical box to the grounding conductor & connecting the grounding

[Contact Us](#)



## Requirements And Specifications For Installation Of

In flammable and explosive environments, explosion-proof distribution boxes should be selected and explosion-proof treatment should be carried out.

[Contact Us](#)



## GTC Technical Guidelines

Introduction These guidelines provide you with information on the installation of electricity mains, services, streetlamps, and other parts of our electricity networks. The guidelines also cover the safety

[Contact Us](#)



### Installing an Electrical Service

Installing an Electrical Service Once you know the steps, mounting and wiring a meter base and breaker panel are easier than you might think.

[Contact Us](#)

### DISTRIBUTION BOX

Each DISTRIBUTION BOX and controller must be grounded. On the US market, a 5.26 mm<sup>2</sup> (10 AWG) ground wire must be used, and in all other markets a 6 mm<sup>2</sup> must be used.

[Contact Us](#)



### How to Wire a Home Distribution Box

FDB (Final Distribution Board) directly connected through SDB (Sub Distribution Board) and the final switches are used to control the connected

[Contact Us](#)



## Embedded Installation Of Distribution Box

According to the installation size of wall mounted (surface mounted) terminal combination electrical appliances, first drill bolt holes or embedded wood bricks, then open the upper cover of the

[Contact Us](#)



## How to Install a Cable Distribution Box Safely and

This article provides a detailed overview of the entire process of installing a distribution box, from pre-installation preparation to post-installation

[Contact Us](#)



## Transformer and Distribution Cabinet Equipment

2.1 Pre-installation Requirements for Complete Distribution Cabinets, Control Cabinets, and Distribution Boxes: - The indoor ceiling and wall decoration

[Contact Us](#)

**REINFORCED VIRGIN PVC TRUNKING**  
Superior Crush Resistance

ISO 9001  
ROHS  
DNAS

<b>37.6MPA</b> Tensile Strength	<b>2856MPA</b> Elastic Modulus
<b>9.8KJ/M<sup>2</sup></b> Impact Strength	<b>1.54G/CM</b> Density

## Distribution Box Installation: A Complete Guide to Safe

The distribution box, often referred to as a breaker box, fuse box, or electrical panel, is a critical component of any electrical system. It acts as the central hub for

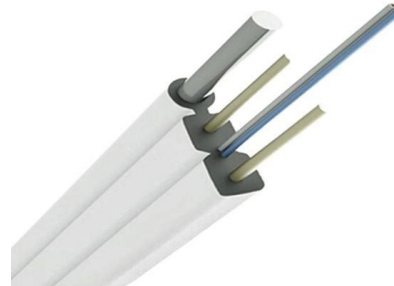
[Contact Us](#)



## How to Install Ground Rods: 11 Simple Steps (with

Luckily, it's easy to install ground rods all by yourself with just a bit of planning and care. In this article, we'll show you how to choose a location for your

[Contact Us](#)



## How to Install a Distribution Box--A Comprehensive

Before starting the installation, finding a proper place for putting the distribution box is crucial, because it largely decides the safety and convenience

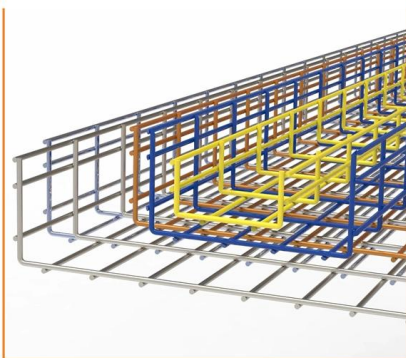
[Contact Us](#)



## Grounding System Installation Standards for Distribution Boxes and

Whether you're a seasoned pro or just starting out, this comprehensive guide will give you practical insights into proper grounding techniques, with a special focus on how selecting quality materials

[Contact Us](#)



## News

The installation of power distribution cabinets and boxes in data rooms is crucial for ensuring efficient and reliable power distribution. However, this process requires careful attention to detail to guarantee

[Contact Us](#)



## Contact Us

---

For datasheets, pricing, or custom fiber access solutions, please visit:  
<https://frindel.es>